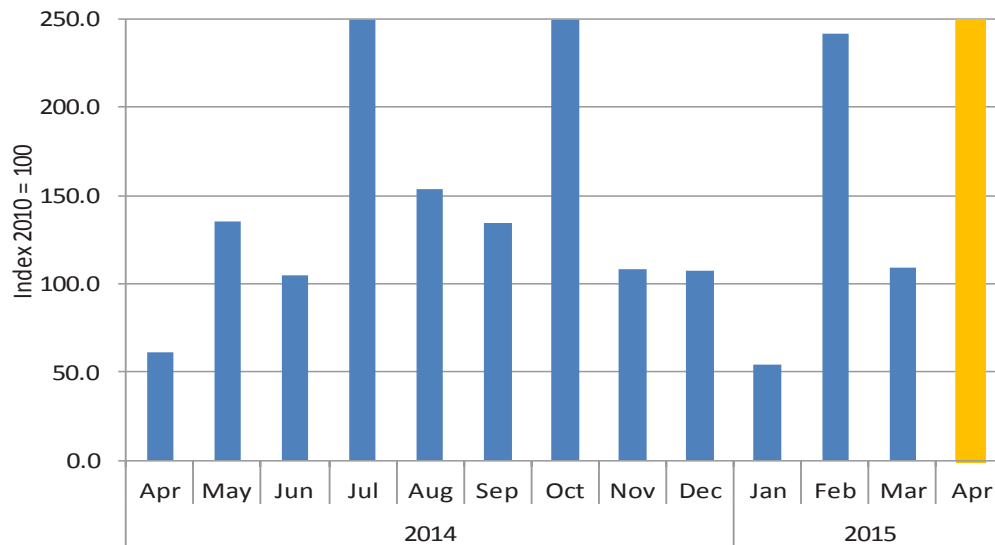
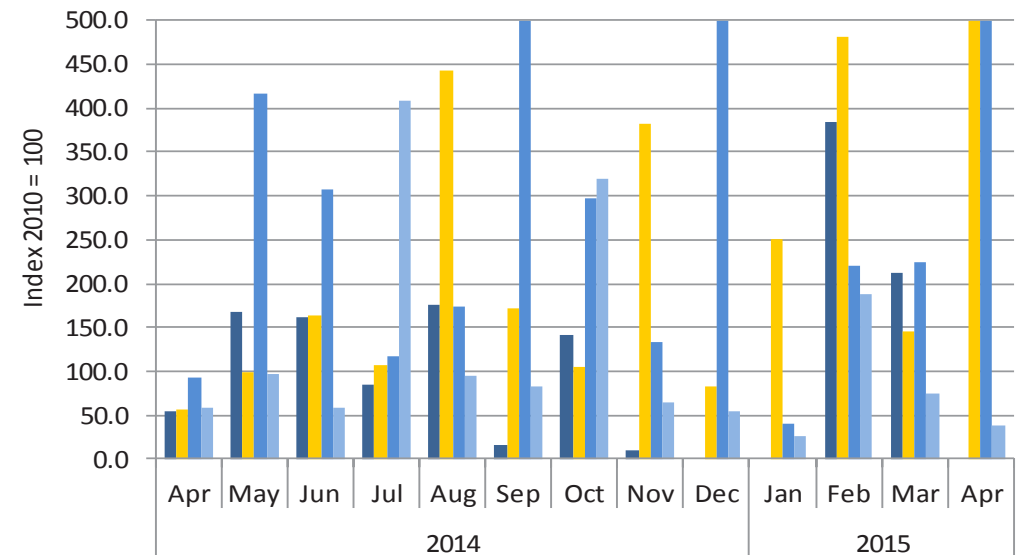


Chart 1: Buildings completed index



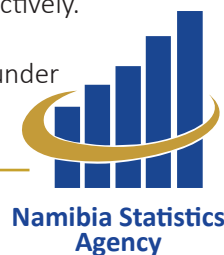
- The composite buildings completed index increased to 425.8 points in the month under review from 109.4 points during the previous month and 61.0 points of the same month of last year. This represents an increase of 289.1 per cent over the month and 597.7 per cent over the year.
- The major contributor to the increase from March to April was the category industrial buildings that increased by 1763.7 per cent. The category industrial buildings was also the major contributor on y/y basis and increased by 100.0 per cent.
- In value terms, buildings completed during the period January to April 2015 amounted to N\$ 630.7 million compared to N\$ 282.3 million during the same period of 2014. This represents an increase of N\$ 348.4 million, or 123.4 per cent.

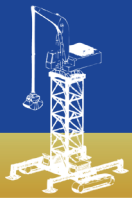
Chart 2: Buildings completed indices for selected towns



- The building completed index for the municipality of Walvis Bay recording a massive index of 3080.8 points during the month under review from 224.5 points over a month and 93.4 over a year. This represents an increase of 1272.5 per cent and 3200.1 per cent m/m and y/y basis, respectively.
- This was followed by Swakopmund municipality with an index level of 574.2 points. This represents an increase of 295.7 per cent m/m and 924.8 per cent y/y basis.
- Municipality of Windhoek recorded an index value of 38.3 points compared to 75.2 points and 57.6 points over a month and over a year respectively. This represents a decline of 33.5 per cent and 49.1 per cent m/m and y/y, respectively.
- However, no buildings were completed during the month under review in Ongwediva town council.

The composite buildings completed index in July and October 2014 and April 2015 exceeded the limited and stood at 316.4 basis point, 277.2 basis points and 425.8 basis points. While building completed indices for Walvis Bay in September and December 2014 and April 2015 exceeded the limited and stood at 521.1 basis points, 560.6 basis points and 3080.8, respectively. Swakopmund building completed index for April 2015 also exceed the limit and stood at 574.2 points. In order to improve readability, we have limited the index scale to 250 basis points and 500 basis points.





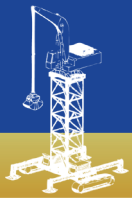
Monthly Building Plans Report

Issue 016
15 June 2015

Table 1: Indices of buildings completed

		Ongwediva	Swakopmund	Walvis Bay	Windhoek	Composite index			Ongwediva	Swakopmund	Walvis Bay	Windhoek	Composite index	
2010	Jan	10.2	32.7	214.0	29.2	47.9	2012	Sep	40.3	319.9	147.6	87.3	120.1	
	Feb	49.0	81.6	58.1	148.6	123.5		Oct	150.8	353.3	328.8	234.7	253.9	
	Mar	31.3	110.1	44.2	90.2	83.7		Nov	-	279.7	246.4	99.8	131.3	
	Apr	33.0	51.7	76.7	97.6	85.0		Dec	-	193.4	280.0	42.4	83.9	
	May	66.1	109.4	111.4	99.1	99.5		2013	Jan	471.9	25.3	309.0	49.0	102.9
	Jun	35.5	77.3	95.7	148.0	125.6			Feb	62.3	109.7	250.5	107.2	119.5
	Jul	646.9	81.1	93.2	143.5	165.3			Mar	36.4	158.7	90.6	207.3	176.8
	Aug	82.5	109.7	40.8	69.7	72.7			Apr	135.2	147.0	127.9	118.8	124.5
	Sept	72.2	185.0	35.1	126.7	120.7			May	36.0	90.2	133.9	188.6	159.6
	Oct	80.9	72.0	211.5	86.4	97.4			Jun	31.7	133.3	217.2	139.9	139.7
	Nov	25.4	169.5	101.7	87.5	95.2			Jul	-	117.1	92.4	90.1	87.5
	Dec	67.0	119.8	117.5	73.5	83.6			Aug	841.4	150.8	85.5	72.1	137.3
2011	Jan	-	38.5	205.9	52.9	63.6	Sept		65.9	148.5	154.0	43.6	70.2	
	Feb	39.7	142.6	48.5	60.7	68.4	Oct		15.5	150.3	92.8	112.3	108.4	
	Mar	44.7	114.4	30.6	93.0	85.8	Nov		138.7	286.7	180.9	36.1	90.6	
	Apr	80.3	55.0	261.1	199.9	179.5	Dec		56.6	203.1	285.9	29.0	80.3	
	May	-	122.2	114.7	69.7	76.3	2014	Jan	46.4	62.2	37.1	78.4	69.7	
	Jun	24.0	144.8	119.1	183.5	160.7		Feb	49.1	145.8	71.8	165.7	145.1	
	Jul	91.1	63.0	87.6	146.4	125.7		Mar	176.9	178.6	220.7	54.1	96.2	
	Aug	69.4	295.6	149.1	162.5	171.6		Apr	55.1	56.2	93.4	57.6	61.0	
	Sept	101.8	180.5	112.1	280.9	237.7		May	167.7	98.7	415.9	96.5	135.5	
	Oct	34.1	130.7	21.2	45.7	53.2		Jun	162.2	164.0	307.1	57.3	104.7	
	Nov	18.0	138.0	356.2	66.4	102.8		Jul	84.6	107.4	117.9	408.1	316.4	
	Dec	62.6	271.2	40.6	81.4	100.1		Aug	174.8	442.5	173.5	95.6	153.7	
2012	Jan	40.9	14.5	66.9	28.4	31.6		Sept	15.0	170.9	521.1	81.6	134.8	
	Feb	-	170.4	53.5	194.1	162.7		Oct	140.6	105.6	298.2	319.2	277.2	
	Mar	85.5	95.1	46.7	54.8	61.2		Nov	10.4	381.9	132.4	65.0	108.8	
	Apr	-	120.8	62.9	286.3	221.6		Dec	0.0	81.6	560.6	54.2	107.5	
	May	87.1	151.9	66.2	175.3	154.6	2015	Jan	0.0	250.9	40.7	25.3	54.0	
	Jun	152.1	115.4	281.6	292.7	259.1		Feb	385.0	482.1	220.6	187.1	242.2	
	Jul	-	317.8	117.8	96.2	120.1		Mar	212.0	145.1	224.5	75.2	109.4	
	Aug	107.3	271.3	251.1	76.6	122.1		Apr	-	574.2	3,080.8	38.3	425.8	

The composite buildings completed index in July and October 2014 and April 2015 exceeded the limited and stood at 316.4 basis point, 277.2 basis points and 425.8 basis points. While building completed indices for Walvis Bay in September and December 2014 and April 2015 exceeded the limited and stood at 521.1 basis points, 560.6 basis points and 3080.8, respectively. Swakopmund building completed index for April 2015 also exceed the limit and stood at 574.2 points. In order to improve readability, we have limited the index scale to 250 basis points and 500 basis points.



Monthly Building Plans Report

Issue 016
15 June 2015

Methodology

Data Sources Selected local authorities

Base year 2010

Calculations of index The NSA monitors the value and number of buildings completed for 24 local authorities on a monthly basis. Four of these towns that accounted for 92 per cent of the total values of all buildings completed in 2010 have been selected for the index compilation.

The composite buildings completed index in July and October 2014 and April 2015 exceeded the limited and stood at 316.4 basis point, 277.2 basis points and 425.8 basis points. While building completed indices for Walvis Bay in September and December 2014 and April 2015 exceeded the limited and stood at 521.1 basis points, 560.6 basis points and 3080.8, respectively. Swakopmund building completed index for April 2015 also exceed the limit and stood at 574.2 points. In order to improve readability, we have limited the index scale to 250 basis points and 500 basis points.