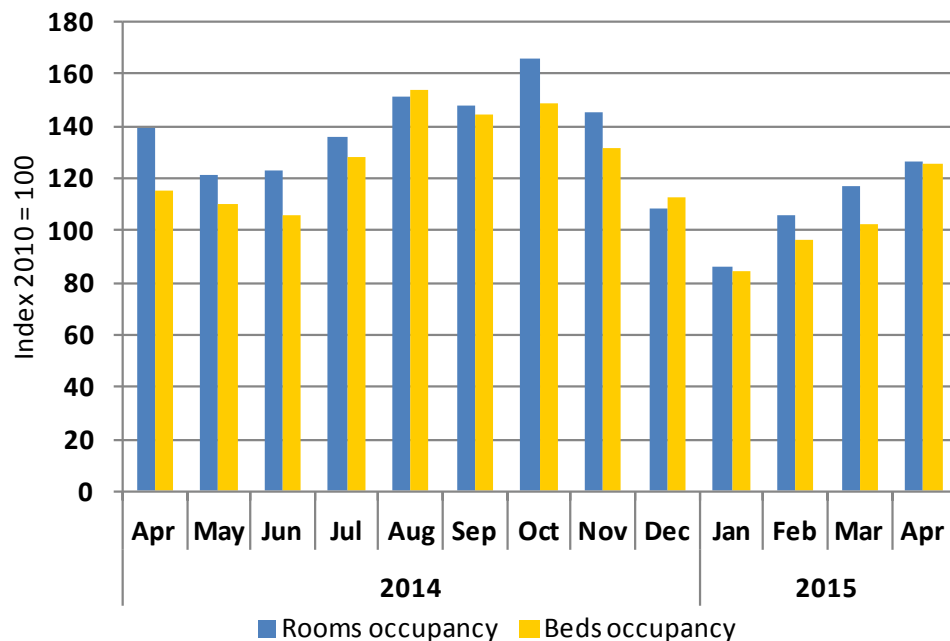


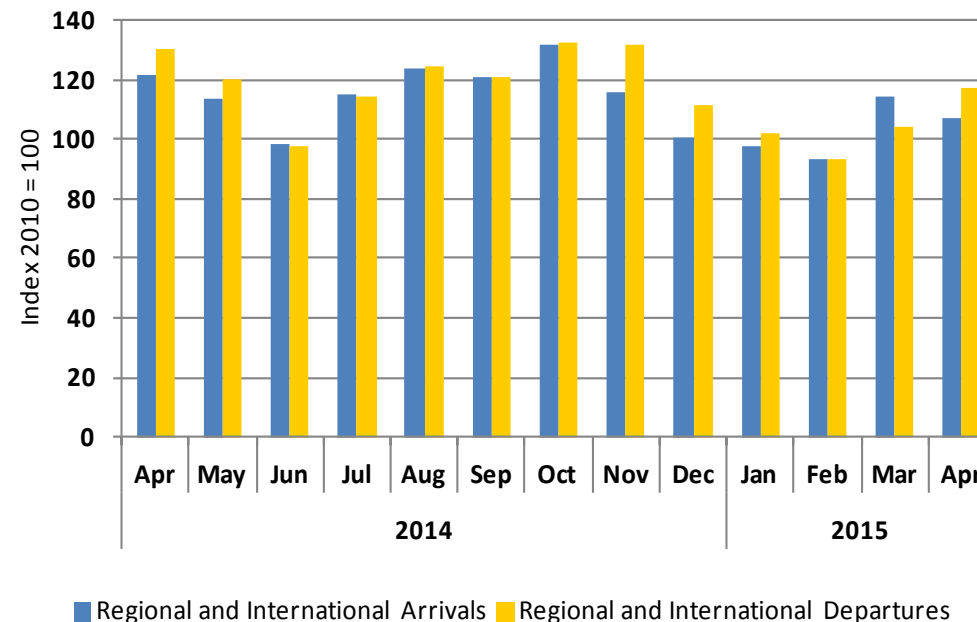


**Chart 1: Beds & Rooms Occupancy Indices**



- The beds occupancy index for April 2015 stood at 125.2 points compared to 102.5 points in the previous month and 115.2 points in the same month of the preceding year. This represents increases of 22.1 per cent and 8.7 per cent over the month and on an annual basis, respectively.
- Furthermore, the room's occupancy index increased to 126.1 points in the month under review from 116.8 points during the previous month. This represents an increase of 7.9 per cent over the month, and a decline of 9.3 per cent over the year.

**Chart 2: Regional & International Arrivals and Departures Indices**



- The index for regional and international arrivals declined in April 2015 and stood at 106.9 points compared to 114.0 points in the previous month and 121.8 points in the same month of the previous year. This represents declines of 6.2 per cent and 12.2 per cent over the month and over the year, respectively.
- On the other hand the regional and international departures index increased to 117.3 points in April 2015 from 103.9 points one month earlier. In comparison to an annual basis, the index decline from 130.6 points. This represents an increase of 13.0 per cent when compared to the preceding month; while on an annual basis it declined by 10.2 per cent.

These serves as a proxy to tourism sector, a priority sector under NDP4 and contributes 1.8 per cent to GDP in 2013 compared to 1.6 per cent in 2012.



**Table 1: The indices of regional and International arrivals and departures, and beds and rooms occupancy rates**

		Arrivals (reg.&intern.)	Departures (reg.&intern.)	Room occupancy	Bed occupancy			Arrivals (reg.&intern.)	Departures (reg.&intern.)	Room occupancy	Bed occupancy	
2010	Jan	85.1	90.3	63.3	70.9	2012	Sep	134	132	127	117	
	Feb	83.6	81.9	67.7	68.4		Oct	133	135	127	116	
	Mar	107.6	96.5	90.5	90.1		Nov	112	122	122	113	
	Apr	92.7	105.1	106.6	110.6		Dec	107	83	91	99	
	May	104.6	98.6	104.4	99.6		2013	Jan	96.9	99.5	58.6	57.0
	Jun	76.6	82.7	86.9	85.5			Feb	86.2	80.9	85.3	74.9
	Jul	102.1	86.0	94.2	94.9			Mar	108.3	105.5	92.8	85.9
	Aug	125.9	127.2	136.9	134.7			Apr	104.4	111.9	98.8	90.5
	Sep	116.6	115.3	134.2	132.4			May	113.7	114.9	102.9	95.6
	Oct	116.8	118.5	127.8	129.6			Jun	98.3	97.2	96.0	86.8
	Nov	97.3	103.9	116.0	107.5			Jul	117.4	106.6	107.8	104.5
	Dec	91.1	93.9	71.5	75.9			Aug	116.6	126.9	123.0	138.8
2011	Jan	87.9	89.3	53.5	55.9	Sep	124.7	123.1	133.2	118.8		
	Feb	87.4	84.5	68.4	61.5	Oct	123.5	123.8	134.6	131.3		
	Mar	101.9	98.6	68.7	68.8	Nov	123.1	133.0	127.5	115.2		
	Apr	110.9	114.0	78.8	100.5	Dec	98.5	106.6	88.1	88.8		
	May	100.2	105.4	77.1	85.0	2014	Jan	96.4	93.1	79.2	77.6	
	Jun	92.3	92.3	76.5	77.7		Feb	96.2	93.4	101.1	85.9	
	Jul	123.1	109.4	87.8	98.8		Mar	112.7	107.1	115.3	101.9	
	Aug	122.2	133.7	80.0	116.4		Apr	121.8	130.6	142.8	114.6	
	Sep	117.8	119.9	98.3	101.0		May	113.7	120.1	124.9	118.5	
	Oct	134.5	129.8	110.1	122.5		Jun	98.7	97.9	125.5	106.2	
	Nov	113.2	127.7	98.2	108.3		Jul	114.8	114.1	141.4	142.4	
	Dec	110.1	114.6	72.7	79.3		Aug	123.8	124.8	155.0	157.1	
2012	Jan	95.5	108.2	59.4	60.4	Sep	120.8	120.9	147.9	144.4		
	Feb	95.4	94.0	81.0	71.0	Oct	132.0	132.8	165.6	148.9		
	Mar	113.2	109.2	85.5	77.0	Nov	115.6	131.9	145.5	131.7		
	Apr	119.9	127.6	99.0	97.0	Dec	100.9	111.8	108.0	112.9		
	May	114.6	113.7	94.9	89.3	2015	Jan	97.7	101.7	87.6	85.4	
	Jun	108.0	107.3	89.7	82.4		Feb	93.0	93.4	106.3	93.5	
	Jul	135.5	126.6	105.5	101.9		Mar	114.0	103.9	117.2	99.5	
	Aug	146	153	132	127		Apr	106.9	117.3	126.0	125.2	

These serves as a proxy to tourism sector, a priority sector under NDP4 and contributes 1.8 per cent to GDP in 2013 compared to 1.6 per cent in 2012.



## Methodology

<b>Background</b>	The room and bed occupancy indices and the arrivals and departures indices serves as a proxy to tourism sector, a priority sector under NDP4.
<b>Data sources</b>	Namibia Airport Company and Hospitality Association of Namibia.
<b>Base year</b>	2010

---

These serves as a proxy to tourism sector, a priority sector under NDP4 and contributes 1.8 per cent to GDP in 2013 compared to 1.6 per cent in 2012.