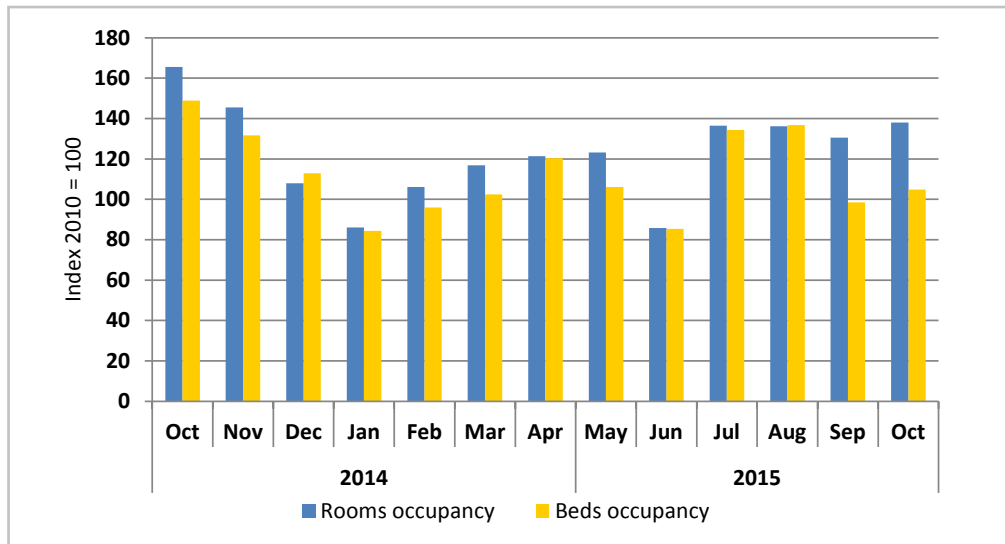




Chart 1: Beds & Rooms Occupancy Indices



- The Rooms' Occupancy Index recorded 138.1 basis points in October 2015. This translates into an increase of 5.8 percent m/m and a decline of 16.6 percent y/y.
- The Beds' Occupancy Index increased, recording 104.9 basis points during the review month compared to 98.4 basis points recorded in September 2015. This represents an increase of 6.5 percent m/m and a decline of 29.6 percent y/y.
- The –Namibia Airports Company data was not available at the time of compiling this report.

These serves as a proxy to tourism sector, a priority sector under NDP4 and contributed 1.8 percent to GDP in 2013 compared to 1.6 percent in 2012.



Table 1: The indices of regional and International arrivals and departures, and beds and rooms occupancy rates

		Arrivals (reg.&intern.)	Departures(reg.&intern.)	Room occupancy	Bed occupancy			Arrivals (reg.&intern.)	Departures(reg.&intern.)	Room occupancy	Bed occupancy					
2010	Jan	85.1	90.3	63.3	70.9		Dec	107	83	91	99					
	Feb	83.6	81.9	67.7	68.4	2013	Jan	96.9	99.5	58.6	57.0					
	Mar	107.6	96.5	90.5	90.1		Feb	86.2	80.9	85.3	74.9					
	Apr	92.7	105.1	106.6	110.6		Mar	108.3	105.5	92.8	85.9					
	May	104.6	98.6	104.4	99.6		Apr	104.4	111.9	98.8	90.5					
	June	76.6	82.7	86.9	85.5		May	113.7	114.9	102.9	95.6					
	July	102.1	86.0	94.2	94.9		June	98.3	97.2	96.0	86.8					
	Aug	125.9	127.2	136.9	134.7		July	117.4	106.6	107.8	104.5					
	Sept	116.6	115.3	134.2	132.4		Aug	116.6	126.9	123.0	138.8					
	Oct	116.8	118.5	127.8	129.6		Sept	124.7	123.1	133.2	118.8					
	Nov	97.3	103.9	116.0	107.5		Oct	123.5	123.8	134.6	131.3					
	Dec	91.1	93.9	71.5	75.9		Nov	123.1	133.0	127.5	115.2					
2011	Jan	87.9	89.3	53.5	55.9		Dec	98.5	106.6	88.1	88.8	2014	Jan	96.4	93.1	79.2
	Feb	87.4	84.5	68.4	61.5	Feb	96.2	93.4	101.1	85.9						
	Mar	101.9	98.6	68.7	68.8	Mar	112.7	107.1	115.3	101.9						
	Apr	110.9	114.0	78.8	100.5	Apr	121.8	130.6	142.8	114.6						
	May	100.2	105.4	77.1	85.0	May	113.7	120.1	124.9	118.5						
	June	92.3	92.3	76.5	77.7	June	98.7	97.9	125.5	106.2						
	July	123.1	109.4	87.8	98.8	July	114.8	114.1	141.4	142.4						
	Aug	122.2	133.7	80.0	116.4	Aug	123.8	124.8	155.0	157.1						
	Sept	117.8	119.9	98.3	101.0	Sept	120.8	120.9	147.9	144.4						
	Oct	134.5	129.8	110.1	122.5	Oct	132.0	132.8	165.6	148.9						
	Nov	113.2	127.7	98.2	108.3	Nov	115.6	131.9	145.5	131.7						
	Dec	110.1	114.6	72.7	79.3	Dec	100.9	111.8	108.0	112.9						
2012	Jan	95.5	108.2	59.4	60.4	2015	Jan	97.7	101.7	87.6	85.4					
	Feb	95.4	94.0	81.0	71.0		Feb	93.0	93.4	106.3	93.5					
	Mar	113.2	109.2	85.5	77.0		Mar	114.0	103.9	117.2	99.5					
	Apr	119.9	127.6	99.0	97.0		Apr	106.9	117.3	126.0	125.2					
	May	114.6	113.7	94.9	89.3		May	100.9	100.9	137.8	122.7					
	June	108.0	107.3	89.7	82.4		June	102.3	100.4	84.7	84.2					
	July	135.5	126.6	105.5	101.9		July	-	-	85.8	85.3					
	Aug	146	153	132	127		Aug	-	-	136.2	136.8					
	Sept	134	132	127	117		Sept	-	-	130.5	118.8					
	Oct	133	135	127	116		Oct	-	-	138.1	126.6					
	Nov	112	122	122	113											

These serves as a proxy to tourism sector, a priority sector under NDP4 and contributed 1.8 percent to GDP in 2013 compared to 1.6 percent in 2012.



Methodology

Background: The room and bed occupancy indices and the arrivals and departures indices serves as a proxy to tourism sector, a priority sector under NDP4.

Data sources: Namibia Airport Company and Hospitality Association of Namibia.

Base year: 2010

These serves as a proxy to tourism sector, a priority sector under NDP4 and contributed 1.8 percent to GDP in 2013 compared to 1.6 percent in 2012.