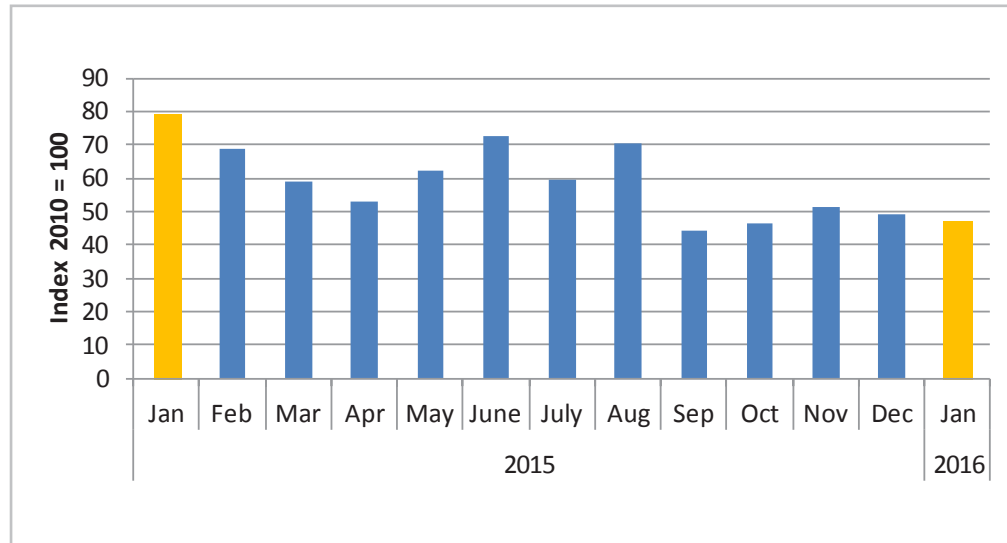


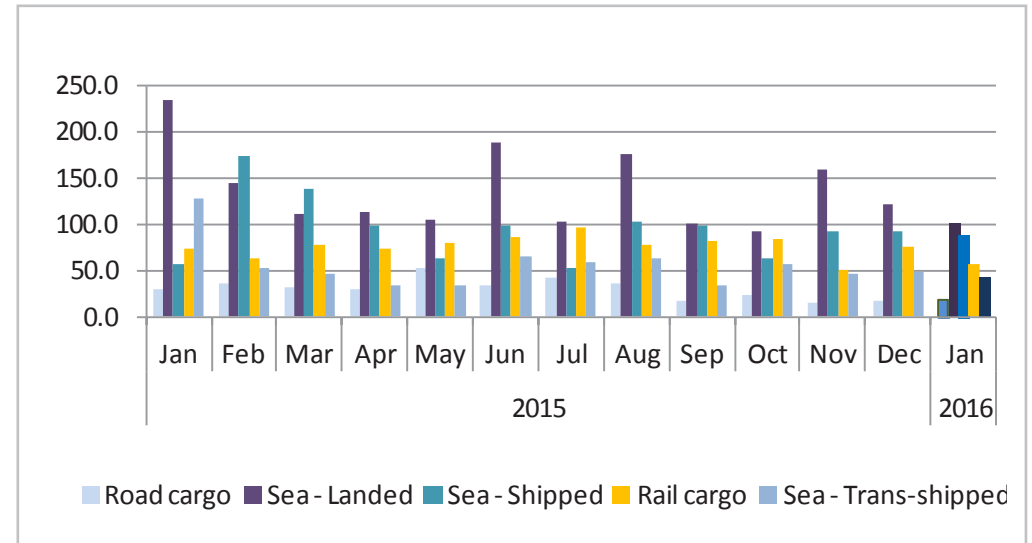


Chart 1: Combination of Transport Index



- (Chart 1): The Composite Transport Index which consists of rail cargo, road cargo and sea cargo declined from 49.0 basis points in December 2015 to 42.4 basis points in January 2016. This translates in a decline of 13.5 percent m/m and 46.5 percent y/y.
- The total volume transported was 468 000 tonnes in January 2016 compared to 563 411 tonnes in December 2015.
- (Chart 2): The Railway Cargo sub-index recorded in January 2016 was 55.8 basis points. This translates into a decline of 26.8 percent m/m and 23.8 percent y/y.
- The sub-index recorded for Road Cargo in January 2016 was 17.1 basis points. This is a decline of 2.8 percent m/m and 42.0 percent y/y.

Chart 2: Transport Sub-Sector Index



- Sea-landed sub-index decreased in January 2016 recording 100.0 basis. This results in a decline of 17.7 percent m/m and 57.3 percent y/y.
- Sea-shipped sub-index recorded 88.0 basis points in January 2016. This translates in a decline of 4.5 percent m/m and an increase of 56.6 percent y/y.
- The Sea Trans-shipped sub-index for January 2016 stood at 41.4 basis points from 48.6 basis points in December 2015. This is a decline of 14.8 percent m/m and 67.3 percent y/y.



Monthly Transport Report

Issue 025
5 April 2016

Table 1: Transport Index

| Year | Month | Rail cargo | Road cargo | Sea cargo | Overall | Year | Month | Rail cargo | Road cargo | Sea cargo | Overall |
|------|-------|------------|------------|-----------|---------|------|-------|------------|------------|-----------|---------|
| 2011 | Jan | 94.1 | 69.8 | 87.5 | 77.9 | 2014 | Jan | 68.6 | 57.1 | 132.8 | 84.3 |
| | Feb | 83.9 | 72.4 | 128.9 | 93.0 | | Feb | 76.6 | 79.9 | 116.6 | 92.3 |
| | Mar | 100.7 | 89.9 | 62.5 | 81.3 | | Mar | 75.9 | 54.4 | 84.9 | 66.8 |
| | Apr | 81.8 | 85.3 | 77.2 | 82.2 | | Apr | 69.2 | 54.3 | 102.9 | 72.4 |
| | May | 87.9 | 91.3 | 112.9 | 98.5 | | May | 63.2 | 63.5 | 123.7 | 84.4 |
| | Jun | 89.2 | 96.5 | 93.0 | 94.7 | | Jun | 87.5 | 58.3 | 68.0 | 64.0 |
| | Jul | 98.5 | 95.5 | 109.0 | 100.4 | | Jul | 93.2 | 56.7 | 97.1 | 73.7 |
| | Aug | 121.3 | 103.4 | 120.3 | 110.7 | | Aug | 78.5 | 49.1 | 149.7 | 86.4 |
| | Sep | 120.4 | 95.5 | 77.1 | 91.1 | | Sep | 86.4 | 59.0 | 87.1 | 71.0 |
| | Oct | 112.9 | 98.4 | 131.3 | 111.0 | | Oct | 79.2 | 69.3 | 67.8 | 69.6 |
| | Nov | 118.2 | 99.2 | 114.8 | 106.2 | | Nov | 72.2 | 51.7 | 127.7 | 79.8 |
| | Dec | 78.2 | 80.8 | 78.2 | 79.7 | | Dec | 64.4 | 48.9 | 99.2 | 67.6 |
| 2012 | Jan | 104.1 | 98.9 | 107.6 | 102.3 | 2015 | Jan | 73.2 | 29.5 | 162.5 | 79.2 |
| | Feb | 72.1 | 82.2 | 145.7 | 103.4 | | Feb | 62.3 | 35.3 | 125.3 | 68.7 |
| | Mar | 97.6 | 92.1 | 91.4 | 92.3 | | Mar | 76.8 | 32.4 | 99.0 | 59.1 |
| | Apr | 87.0 | 71.6 | 118.6 | 89.2 | | Apr | 73.3 | 29.1 | 87.4 | 53.0 |
| | May | 95.4 | 75.8 | 83.9 | 80.2 | | May | 80.3 | 52.0 | 75.0 | 62.3 |
| | Jun | 89.5 | 90.0 | 141.0 | 107.7 | | Jun | 85.5 | 33.7 | 133.0 | 72.4 |
| | Jul | 95.9 | 90.2 | 131.7 | 105.1 | | Jul | 95.7 | 42.5 | 78.7 | 59.4 |
| | Aug | 94.1 | 87.9 | 149.1 | 109.7 | | Aug | 77.2 | 35.0 | 126.6 | 70.2 |
| | Sep | 100.5 | 96.3 | 76.3 | 89.7 | | Sep | 81.2 | 16.4 | 81.0 | 44.1 |
| | Oct | 111.5 | 92.9 | 123.1 | 104.9 | | Oct | 82.9 | 23.4 | 75.1 | 46.2 |
| | Nov | 95.2 | 104.4 | 124.6 | 110.6 | | Nov | 49.6 | 14.6 | 112.3 | 51.4 |
| | Dec | 71.6 | 82.6 | 104.0 | 89.1 | | Dec | 76.2 | 17.6 | 94.2 | 49.0 |
| 2013 | Jan | 88.1 | 87.0 | 158.6 | 112.0 | 2016 | Jan | 55.8 | 17.1 | 80.8 | 42.4 |
| | Feb | 71.2 | 77.1 | 117.7 | 90.7 | | | | | | |
| | Mar | 69.9 | 78.0 | 75.5 | 76.5 | | | | | | |
| | Apr | 94.8 | 84.5 | 98.9 | 90.4 | | | | | | |
| | May | 93.4 | 80.5 | 83.9 | 82.8 | | | | | | |
| | Jun | 89.7 | 75.4 | 99.0 | 84.7 | | | | | | |
| | Jul | 105.9 | 74.9 | 144.9 | 101.7 | | | | | | |
| | Aug | 89.6 | 80.3 | 147.0 | 104.2 | | | | | | |
| | Sep | 99.0 | 82.4 | 63.1 | 77.0 | | | | | | |
| | Oct | 86.2 | 65.2 | 69.6 | 68.5 | | | | | | |
| | Nov | 104.4 | 61.2 | 100.0 | 78.2 | | | | | | |
| | Dec | 70.5 | 39.9 | 77.4 | 55.4 | | | | | | |



Monthly Transport Report

Issue 025
5 April 2016

Table 2: Transport Sector Volumes In Tonnes

| Year | Month | Rail cargo | Road cargo | Sea - Landed | Sea - Shipped | Sea - Trans- shipped |
|------|-------|------------|------------|--------------|---------------|----------------------|
| 2011 | Jan | 158 313 | 32 985 | 230 441 | 99 705 | 66 387 |
| | Feb | 141 094 | 34 227 | 347 382 | 168 501 | 68 173 |
| | Mar | 169 490 | 42 462 | 148 039 | 89 998 | 45 408 |
| | Apr | 137 624 | 40 314 | 222 378 | 89 309 | 38 110 |
| | May | 147 904 | 43 146 | 344 304 | 75 312 | 92 104 |
| | Jun | 150 013 | 45 604 | 228 433 | 133 483 | 59 578 |
| | Jul | 165 678 | 45 098 | 238 958 | 158 883 | 96 096 |
| | Aug | 204 048 | 48 868 | 278 304 | 151 861 | 115 038 |
| | Sep | 202 587 | 45 127 | 193 097 | 57 216 | 98 890 |
| | Oct | 189 969 | 46 486 | 341 520 | 178 950 | 74 415 |
| | Nov | 198 892 | 46 886 | 248 056 | 76 148 | 195 876 |
| | Dec | 131 536 | 38 169 | 136 732 | 111 492 | 106 282 |
| 2012 | Jan | 175 153 | 46 711 | 339 939 | 49 512 | 98 176 |
| | Feb | 121 321 | 38 826 | 324 259 | 162 313 | 173 685 |
| | Mar | 164 157 | 43 527 | 213 228 | 116 831 | 84 306 |
| | Apr | 146 452 | 33 851 | 333 259 | 94 466 | 109 665 |
| | May | 160 458 | 35 808 | 171 140 | 100 150 | 108 786 |
| | Jun | 150 651 | 42 534 | 349 940 | 145 318 | 143 462 |
| | Jul | 161 273 | 42 620 | 245 170 | 169 805 | 182 051 |
| | Aug | 158 337 | 41 532 | 322 198 | 193 698 | 159 947 |
| | Sep | 169 059 | 45 521 | 177 298 | 72 114 | 96 293 |
| | Oct | 187 646 | 43 905 | 278 494 | 143 863 | 135 477 |
| | Nov | 160 101 | 49 305 | 232 621 | 139 030 | 193 198 |
| | Dec | 120 543 | 39 013 | 227 104 | 86 574 | 157 746 |
| 2013 | Jan | 148 222 | 41 103 | 413 210 | 118 011 | 187 652 |
| | Feb | 119 758 | 36 449 | 240 472 | 168 407 | 124 496 |
| | Mar | 117 597 | 36 868 | 175 492 | 89 104 | 77 344 |
| | Apr | 159 446 | 39 946 | 213 901 | 167 374 | 67 102 |
| | May | 157 193 | 38 052 | 162 463 | 153 733 | 64 137 |
| | Jun | 150 931 | 3 5 613 | 313 392 | 8 4 325 | 50 850 |
| | Jul | 178 179 | 3 5 366 | 449 476 | 153 385 | 53 790 |
| | Aug | 150 805 | 3 7 920 | 389 125 | 187 365 | 89 449 |
| | Sep | 166 608 | 3 8 925 | 163 131 | 5 4 297 | 68 486 |
| | Oct | 145 087 | 3 0 819 | 208 864 | 3 4 403 | 72 018 |
| | Nov | 175 732 | 2 8 934 | 216 077 | 188 152 | 48 726 |
| | Dec | 118 530 | 1 8 859 | 212 347 | 7 2 265 | 66 073 |

| Year | Month | Rail cargo | Road cargo | Sea - Landed | Sea - Shipped | Sea - Trans- shipped |
|------|-------|------------|------------|--------------|---------------|----------------------|
| 2014 | Jan | 115 499 | 2 6 988 | 513 307 | 6 9 801 | 18 899 |
| | Feb | 128 862 | 3 7 738 | 282 139 | 6 9 319 | 176 798 |
| | Mar | 127 745 | 2 5 721 | 237 985 | 9 0 639 | 56 004 |
| | Apr | 116 492 | 2 5 677 | 268 490 | 116 437 | 81 263 |
| | May | 106 352 | 2 9 993 | 357 048 | 146 157 | 57 244 |
| | Jun | 147 180 | 2 7 549 | 119 098 | 109 368 | 79 595 |
| | Jul | 156 851 | 2 6 798 | 205 737 | 149 032 | 85 204 |
| | Aug | 132 008 | 2 3 180 | 541 235 | 7 0 489 | 66 513 |
| | Sep | 145 446 | 2 7 895 | 156 353 | 160 098 | 78 365 |
| | Oct | 133 231 | 3 2 729 | 164 712 | 6 5 618 | 76 873 |
| | Nov | 121 528 | 2 4 440 | 386 613 | 130 395 | 61 673 |
| | Dec | 108 428 | 2 3 091 | 286 505 | 103 141 | 59 670 |
| 2015 | Jan | 123 113 | 1 3 915 | 516 350 | 5 9 258 | 160 969 |
| | Feb | 104 818 | 1 6 663 | 317 329 | 183 110 | 67 442 |
| | Mar | 129 198 | 1 5 311 | 244 575 | 144 868 | 59 069 |
| | Apr | 123 396 | 1 3 770 | 250 816 | 103 334 | 42 115 |
| | May | 135 100 | 2 4 549 | 230 843 | 6 6 697 | 42 141 |
| | Jun | 143 934 | 1 5 902 | 416 507 | 104 541 | 81 658 |
| | Jul | 160 931 | 2 0 088 | 226 584 | 5 5 817 | 74 345 |
| | Aug | 129 809 | 1 6 534 | 385 365 | 108 221 | 80 002 |
| | Sep | 136 560 | 7 733 | 220 926 | 103 429 | 42 513 |
| | Oct | 139 531 | 1 1 058 | 202 379 | 6 5 525 | 72 551 |
| | Nov | 83 375 | 6 890 | 352 373 | 9 6 723 | 59 787 |
| | Dec | 128 234 | 8 326 | 268 024 | 9 7 029 | 61 799 |
| 2016 | Jan | 9 3 909 | 8 093 | 220 625 | 9 2 762 | 52 611 |



Monthly Transport Report

Issue 025
5 April 2016

Table 3: Transport Sub-sector Index

| Year | Month | Rail cargo | Road cargo | Sea - Land | Sea - Ship | Sea - Trans - ship |
|------|-------|------------|------------|------------|------------|--------------------|
| 2011 | Jan | 94.1 | 69.8 | 104.5 | 94.6 | 52.2 |
| | Feb | 83.9 | 72.4 | 157.5 | 159.9 | 53.6 |
| | Mar | 100.7 | 89.9 | 67.1 | 85.4 | 35.7 |
| | Apr | 81.8 | 85.3 | 100.8 | 84.8 | 30.0 |
| | May | 87.9 | 91.3 | 156.1 | 71.5 | 72.4 |
| | Jun | 89.2 | 96.5 | 103.5 | 126.7 | 46.8 |
| | Jul | 98.5 | 95.5 | 108.3 | 150.8 | 75.6 |
| | Aug | 121.3 | 103.4 | 126.2 | 144.1 | 90.5 |
| | Sep | 120.4 | 95.5 | 87.5 | 54.3 | 77.8 |
| | Oct | 112.9 | 98.4 | 154.8 | 169.8 | 58.5 |
| | Nov | 118.2 | 99.2 | 112.4 | 72.3 | 154.0 |
| | Dec | 78.2 | 80.8 | 62.0 | 105.8 | 83.6 |
| 2012 | Jan | 104.1 | 98.9 | 154.1 | 47.0 | 77.2 |
| | Feb | 72.1 | 82.2 | 147.0 | 154.1 | 136.6 |
| | Mar | 97.6 | 92.1 | 96.7 | 110.9 | 66.3 |
| | Apr | 87.0 | 71.6 | 151.1 | 89.7 | 86.2 |
| | May | 95.4 | 75.8 | 77.6 | 95.1 | 85.5 |
| | Jun | 89.5 | 90.0 | 158.6 | 137.9 | 112.8 |
| | Jul | 95.9 | 90.2 | 111.1 | 161.2 | 143.1 |
| | Aug | 94.1 | 87.9 | 146.0 | 183.8 | 125.8 |
| | Sep | 100.5 | 96.3 | 80.4 | 68.4 | 75.7 |
| | Oct | 111.5 | 92.9 | 126.2 | 136.5 | 106.5 |
| | Nov | 95.2 | 104.4 | 105.4 | 132.0 | 151.9 |
| | Dec | 71.6 | 82.6 | 102.9 | 82.2 | 124.0 |
| 2013 | Jan | 88.1 | 87.0 | 187.3 | 112.0 | 147.5 |
| | Feb | 71.2 | 77.1 | 109.0 | 159.8 | 97.9 |
| | Mar | 69.9 | 78.0 | 79.5 | 84.6 | 60.8 |
| | Apr | 94.8 | 84.5 | 97.0 | 158.9 | 52.8 |
| | May | 93.4 | 80.5 | 73.6 | 145.9 | 50.4 |
| | Jun | 89.7 | 75.4 | 142.1 | 80.0 | 40.0 |
| | Jul | 105.9 | 74.9 | 203.7 | 145.6 | 42.3 |
| | Aug | 89.6 | 80.3 | 176.4 | 177.8 | 70.3 |
| | Sep | 99.0 | 82.4 | 73.9 | 51.5 | 53.8 |
| | Oct | 86.2 | 65.2 | 94.7 | 32.7 | 56.6 |
| | Nov | 104.4 | 61.2 | 97.9 | 178.6 | 38.3 |
| | Dec | 70.5 | 39.9 | 96.3 | 68.6 | 52.0 |
| 2014 | Jan | 68.6 | 57.1 | 232.7 | 66.3 | 14.9 |
| | Feb | 76.6 | 79.9 | 127.9 | 65.8 | 139.0 |
| | Mar | 75.9 | 54.4 | 107.9 | 86.0 | 44.0 |
| | Apr | 69.2 | 54.3 | 121.7 | 110.5 | 63.9 |
| | May | 63.2 | 63.5 | 161.8 | 138.7 | 45.0 |
| | Jun | 87.5 | 58.3 | 54.0 | 103.8 | 62.6 |
| | Jul | 93.2 | 56.7 | 93.3 | 141.5 | 67.0 |
| | Aug | 78.5 | 49.1 | 245.3 | 66.9 | 52.3 |
| | Sep | 86.4 | 59.0 | 70.9 | 152.0 | 61.6 |
| | Oct | 79.2 | 69.3 | 74.7 | 62.3 | 60.4 |
| | Nov | 72.2 | 51.7 | 175.2 | 123.8 | 48.5 |
| | Dec | 64.4 | 48.9 | 129.9 | 97.9 | 46.9 |
| 2015 | Jan | 73.2 | 29.5 | 234.1 | 56.2 | 126.6 |
| | Feb | 62.3 | 35.3 | 143.8 | 173.8 | 53.0 |
| | Mar | 76.8 | 32.4 | 110.9 | 137.5 | 46.4 |
| | Apr | 73.3 | 29.1 | 113.7 | 98.1 | 33.1 |
| | May | 80.3 | 52.0 | 104.6 | 63.3 | 33.1 |
| | Jun | 85.5 | 33.7 | 188.8 | 99.2 | 64.2 |
| | Jul | 95.7 | 42.5 | 102.7 | 53.0 | 58.5 |
| | Aug | 77.2 | 35.0 | 174.7 | 102.7 | 62.9 |
| | Sep | 81.2 | 16.4 | 100.1 | 98.2 | 33.4 |
| | Oct | 82.9 | 23.4 | 91.7 | 62.2 | 57.0 |
| | Nov | 49.6 | 14.6 | 159.7 | 91.8 | 47.0 |
| | Dec | 76.2 | 17.6 | 121.5 | 92.1 | 48.6 |
| 2016 | Jan | 55.8 | 17.1 | 100.0 | 88.0 | 41.4 |



Methodology

The information provided is on rail cargo, road cargo and sea cargo which comprises of sea landed, sea shipped and sea trans-shipped and the sources of data is Transnamib for road and rail cargo and Namport for sea cargo.

The reference period for the index is 2010, and as for the overall index, weights are used in the calculations.