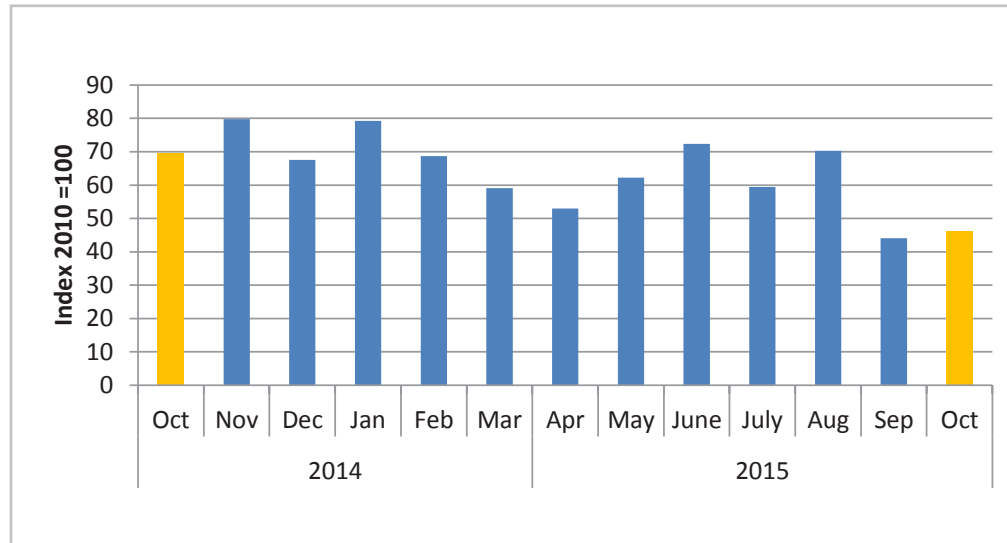


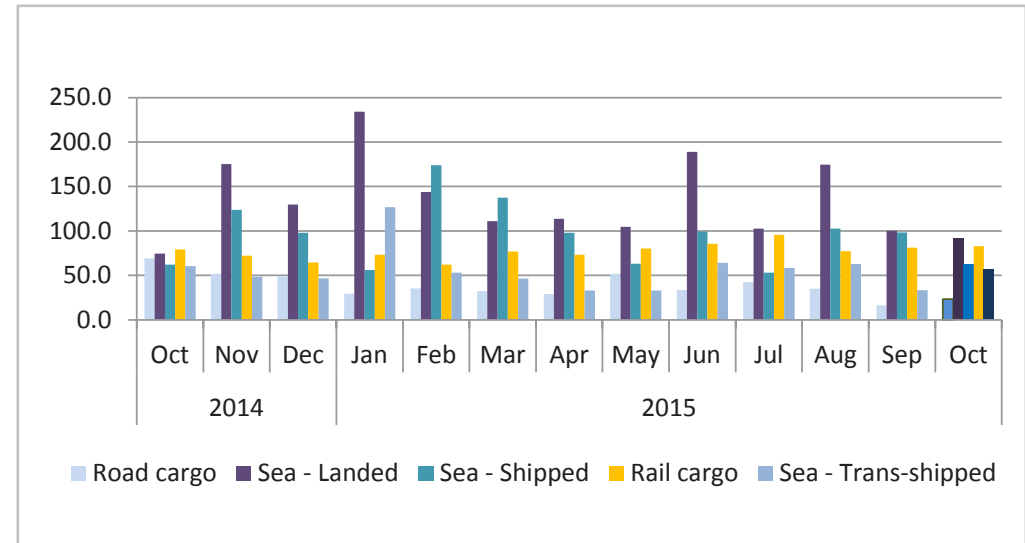


Chart 1: Combination of Transport Index



- (Chart 1) The Composite Transport Index which consists of rail cargo, road cargo and sea cargo in October 2015 recording 46.2 basis points in October 2015, recording an increase of 4.9 percent m/m and a decline of 33.6 percent y/y.
- The total volume transported was 491 043 tonnes in October 2015 compared to 511 160 tonnes in September 2015.
- (Chart 2) Sea-shipped sub-index decreased, recording an index of 62.2 in October 2015 from 98.2 basis points registered in September 2015.
- Sea-landed sub-index recorded 91.7 basis points in October 2015. A decline of 8.4 percent m/m.

Chart 2: Transport Sub-Sector Index



- The sub-index for Road Cargo in October 2015 was 23.4 showing an increase of 43.0 percent m/m and a decline of 66.2 percent y/y.
- The Railway Cargo sub-index increased by 2.2 percent m/m recording an index of 82.9 in October 2015.
- The Sea Trans-shipped sub-index in October 2015 recorded an increase of 70.7 percent m/m and a decline of 5.6 percent y/y.



Monthly Transport Report

Table 1: Transport Index

Year	Month	Rail cargo	Road cargo	Sea cargo	Overall
2011	Jan	94.1	69.8	87.5	77.9
	Feb	83.9	72.4	128.9	93.0
	Mar	100.7	89.9	62.5	81.3
	Apr	81.8	85.3	77.2	82.2
	May	87.9	91.3	112.9	98.5
	June	89.2	96.5	93.0	94.7
	July	98.5	95.5	109.0	100.4
	Aug	121.3	103.4	120.3	110.7
	Sept	120.4	95.5	77.1	91.1
	Oct	112.9	98.4	131.3	111.0
	Nov	118.2	99.2	114.8	106.2
	Dec	78.2	80.8	78.2	79.7
2012	Jan	104.1	98.9	107.6	102.3
	Feb	72.1	82.2	145.7	103.4
	Mar	97.6	92.1	91.4	92.3
	Apr	87.0	71.6	118.6	89.2
	May	95.4	75.8	83.9	80.2
	June	89.5	90.0	141.0	107.7
	July	95.9	90.2	131.7	105.1
	Aug	94.1	87.9	149.1	109.7
	Sept	100.5	96.3	76.3	89.7
	Oct	111.5	92.9	123.1	104.9
	Nov	95.2	104.4	124.6	110.6
	Dec	71.6	82.6	104.0	89.1
2013	Jan	88.1	87.0	158.6	112.0
	Feb	71.2	77.1	117.7	90.7
	Mar	69.9	78.0	75.5	76.5
	Apr	94.8	84.5	98.9	90.4
2013	May	93.4	80.5	83.9	82.8

Year	Month	Rail cargo	Road cargo	Sea cargo	Overall
	June	89.7	75.4	99.0	84.7
	July	105.9	74.9	144.9	101.7
	Aug	89.6	80.3	147.0	104.2
	Sept	99.0	82.4	63.1	77.0
	Oct	86.2	65.2	69.6	68.5
	Nov	104.4	61.2	100.0	78.2
	Dec	70.5	39.9	77.4	55.4
2014	Jan	68.6	57.1	132.8	84.3
	Feb	76.6	79.9	116.6	92.3
	Mar	75.9	54.4	84.9	66.8
	Apr	69.2	54.3	102.9	72.4
	May	63.2	63.5	123.7	84.4
	June	87.5	58.3	68.0	64.0
	July	93.2	56.7	97.1	73.7
	Aug	78.5	49.1	149.7	86.4
	Sept	86.4	59.0	87.1	71.0
	Oct	79.2	69.3	67.8	69.6
	Nov	72.2	51.7	127.7	79.8
	Dec	64.4	48.9	99.2	67.6
2015	Jan	73.2	29.5	162.5	79.2
	Feb	62.3	35.3	125.3	68.7
	Mar	76.8	32.4	99.0	59.1
	Apr	73.3	29.1	87.4	53.0
	May	80.3	52.0	75.0	62.3
	June	85.5	33.7	133.0	72.4
	July	95.7	42.5	78.7	59.4
	Aug	77.2	35.0	126.6	70.2
	Sept	81.2	16.4	100.1	98.2
	Oct	82.9	23.4	91.7	62.2



Monthly Transport Report

Table 2: Transport Sector Volumes In Tonnes

Year	Month	Rail cargo	Road cargo	Sea - Landed	Sea - Shipped	Sea - Trans- shipped	Year	Month	Rail cargo	Road cargo	Sea - Landed	Sea - Shipped	Sea - Trans- shipped	
2011	Jan	158,313	32,985	230,441	99,705	66,387	2013	June	150,931	35,613	313,392	84,325	50,850	
	Feb	141,094	34,227	347,382	168,501	68,173		July	178,179	35,366	449,476	153,385	53,790	
	Mar	169,490	42,462	148,039	89,998	45,408		Aug	150,805	37,920	389,125	187,365	89,449	
	Apr	137,624	40,314	222,378	89,309	38,110		Sept	166,608	38,925	163,131	54,297	68,486	
	May	147,904	43,146	344,304	75,312	92,104		Oct	145,087	30,819	208,864	34,403	72,018	
	June	150,013	45,604	228,433	133,483	59,578		Nov	175,732	28,934	216,077	188,152	48,726	
	July	165,678	45,098	238,958	158,883	96,096		Dec	118,530	18,859	212,347	72,265	66,073	
	Aug	204,048	48,868	278,304	151,861	115,038		2014	Jan	115,499	26,988	513,307	69,801	18,899
	Sept	202,587	45,127	193,097	57,216	98,890			Feb	128,862	37,738	282,139	69,319	176,798
	Oct	189,969	46,486	341,520	178,950	74,415			Mar	127,745	25,721	237,985	90,639	56,004
	Nov	198,892	46,886	248,056	76,148	195,876			Apr	116,492	25,677	268,490	116,437	81,263
	Dec	131,536	38,169	136,732	111,492	106,282			May	106,352	29,993	357,048	146,157	57,244
2012	Jan	175,153	46,711	339,939	49,512	98,176	June		147,180	27,549	119,098	109,368	79,595	
	Feb	121,321	38,826	324,259	162,313	173,685	July		156,851	26,798	205,737	149,032	85,204	
	Mar	164,157	43,527	213,228	116,831	84,306	Aug		132,008	23,180	541,235	70,489	66,513	
	Apr	146,452	33,851	333,259	94,466	109,665	Sept		145,446	27,895	156,353	160,098	78,365	
	May	160,458	35,808	171,140	100,150	108,786	Oct		133,231	32,729	164,712	65,618	76,873	
	June	150,651	42,534	349,940	145,318	143,462	Nov		121,528	24,440	386,613	130,395	61,673	
	July	161,273	42,620	245,170	169,805	182,051	Dec		108,428	23,091	286,505	103,141	59,670	
	Aug	158,337	41,532	322,198	193,698	159,947	2015	Jan	123,113	13,915	516,350	59,258	160,969	
	Sept	169,059	45,521	177,298	72,114	96,293		Feb	104,818	16,663	317,329	183,110	67,442	
	Oct	187,646	43,905	278,494	143,863	135,477		Mar	129,198	15,311	244,575	144,868	59,069	
	Nov	160,101	49,305	232,621	139,030	193,198		Apr	123,396	13,770	250,816	103,334	42,115	
	Dec	120,543	39,013	227,104	86,574	157,746		May	135,100	24,549	230,843	66,697	42,141	
2013	Jan	148,222	41,103	413,210	118,011	187,652		June	143,934	15,902	416,507	104,541	81,658	
	Feb	119,758	36,449	240,472	168,407	124,496		July	160,931	20,088	226,584	55,817	74,345	
	Mar	117,597	36,868	175,492	89,104	77,344		Aug	129,809	16,534	385,365	108,221	80,002	
	Apr	159,446	39,946	213,901	167,374	67,102		Sept	136,560	7,733	220,926	103,429	42,513	
	May	157,193	38,052	162,463	153,733	64,137		Oct	139,531	11,058	202,379	65,525	72,551	



Monthly Transport Report

Table 3: Transport Sub-sector Index

Year	Month	Rail cargo	Road cargo	Sea - Land	Sea - Ship	Sea - Trans - ship
2011	Jan	94.1	69.8	104.5	94.6	52.2
	Feb	83.9	72.4	157.5	159.9	53.6
	Mar	100.7	89.9	67.1	85.4	35.7
	Apr	81.8	85.3	100.8	84.8	30.0
	May	87.9	91.3	156.1	71.5	72.4
	June	89.2	96.5	103.5	126.7	46.8
	July	98.5	95.5	108.3	150.8	75.6
	Aug	121.3	103.4	126.2	144.1	90.5
	Sept	120.4	95.5	87.5	54.3	77.8
	Oct	112.9	98.4	154.8	169.8	58.5
	Nov	118.2	99.2	112.4	72.3	154.0
	Dec	78.2	80.8	62.0	105.8	83.6
2012	Jan	104.1	98.9	154.1	47.0	77.2
	Feb	72.1	82.2	147.0	154.1	136.6
	Mar	97.6	92.1	96.7	110.9	66.3
	Apr	87.0	71.6	151.1	89.7	86.2
	May	95.4	75.8	77.6	95.1	85.5
	June	89.5	90.0	158.6	137.9	112.8
	July	95.9	90.2	111.1	161.2	143.1
	Aug	94.1	87.9	146.0	183.8	125.8
	Sept	100.5	96.3	80.4	68.4	75.7
	Oct	111.5	92.9	126.2	136.5	106.5
	Nov	95.2	104.4	105.4	132.0	151.9
	Dec	71.6	82.6	102.9	82.2	124.0
2013	Jan	88.1	87.0	187.3	112.0	147.5
	Feb	71.2	77.1	109.0	159.8	97.9
	Mar	69.9	78.0	79.5	84.6	60.8
	Apr	94.8	84.5	97.0	158.9	52.8
2013	May	93.4	80.5	73.6	145.9	50.4

Year	Month	Rail cargo	Road cargo	Sea - Land	Sea - Ship	Sea - Trans - ship
	June	89.7	75.4	142.1	80.0	40.0
	July	105.9	74.9	203.7	145.6	42.3
	Aug	89.6	80.3	176.4	177.8	70.3
	Sept	99.0	82.4	73.9	51.5	53.8
	Oct	86.2	65.2	94.7	32.7	56.6
	Nov	104.4	61.2	97.9	178.6	38.3
	Dec	70.5	39.9	96.3	68.6	52.0
2014	Jan	68.6	57.1	232.7	66.3	14.9
	Feb	76.6	79.9	127.9	65.8	139.0
	Mar	75.9	54.4	107.9	86.0	44.0
	Apr	69.2	54.3	121.7	110.5	63.9
	May	63.2	63.5	161.8	138.7	45.0
	June	87.5	58.3	54.0	103.8	62.6
	July	93.2	56.7	93.3	141.5	67.0
	Aug	78.5	49.1	245.3	66.9	52.3
	Sept	86.4	59.0	70.9	152.0	61.6
	Oct	79.2	69.3	74.7	62.3	60.4
	Nov	72.2	51.7	175.2	123.8	48.5
	Dec	64.4	48.9	129.9	97.9	46.9
2015	Jan	73.2	29.5	234.1	56.2	126.6
	Feb	62.3	35.3	143.8	173.8	53.0
	Mar	76.8	32.4	110.9	137.5	46.4
	Apr	73.3	29.1	113.7	98.1	33.1
	May	80.3	52.0	104.6	63.3	33.1
	June	85.5	33.7	188.8	99.2	64.2
	July	95.7	42.5	102.7	53.0	58.5
	Aug	77.2	35.0	174.7	102.7	62.9
	Sept	81.2	16.4	100.1	98.2	33.4
	Oct	82.9	23.4	91.7	62.2	57.0



Methodology

The information provided is on rail cargo, road cargo and sea cargo which comprises of sea landed, sea shipped and sea trans- shipped and the sources of data is Transnamib for road and rail cargo and Namport for sea cargo.

The reference period for the index is 2010, and as for the overall index weights are used in calculations.