

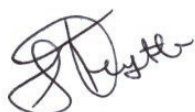
PREFACE

The Namibia Consumer Price Index (NCPI) includes all expenditures on goods and services made by Namibian private households living in urban and rural areas, and is compiled by comparing the prices of the goods and services with the prices prevailing in December 2001. It measures the rate at which the prices of consumer goods and services are changing from time to time. The prices are collected from more than 650 retail outlets in 8 localities.

The index is calculated as a weighted arithmetic average of the proportionate changes in the prices of goods and services in the basket, with the weights representing the expenditure shares on each commodity in the 1993-94 Namibia Household Income and Expenditure Survey. The index is published about 15 days after the end of the reference month to which it relates.

The CPI is widely used as a measure of the rate of inflation as experienced by households in their role as consumers. The CPI has become a key statistic for purposes of economic policy-making, especially the conduct of monetary policy.

It is often specified in legislation and in a wide variety of private contracts for the purposes of adjusting payments (such as wages, rents, interest and social security benefits) for the effects of inflation. It can, therefore, have substantial and wide-ranging financial implications for governments and businesses, as well as for households.



.....
John Steytler
STATISTICIAN - GENERAL

SUMMARY COMMENTS

The monthly inflation rate for January 2013 was estimated at 1.6 percent, as compared to the December 2012 rate of -0.4 percent, an increase of 2.0, percentage points. This increase resulted from monthly increases recorded in all the components comprising the Namibia CPI with the exception of the “Clothing and Footwear” category.

The All Items Index for January increased by 3.2 percentage points from 197.9 recorded in December to 201.1.

The index for Food and Non alcoholic beverages for January 2013 rose to 236.4 from 235.5 recorded in December 2012 registering a monthly increase of about 0.9 percentage points. This increase was due to increases recorded in the subgroups of Fruit; Milk, cheese and eggs; Sugar, jam, honey, syrup, chocolate and confectionery; Food products n.e.c.; Fish; Oils and fats; Food and Meat.

The annual inflation rate for January 2013 stood at 6.6 percent same figure was recorded during the same period last year. The major groups comprising the Namibia CPI annual inflation rates were Food and Non alcoholic beverages (7.8 percent), Housing, water, electricity, gas and other fuels (8.3 percent) and Transport (6.4 percent).

The detailed results of the Namibia CPI for the month of January 2013 are displayed in the Tables 1-5 and in Charts 1-5 respectively.

Table 1: Namibia CPI: All-Items Index, monthly and annual percentage changes (Dec 2001 =100)

Period		Index	Monthly percentage changes	Annual percentage changes
2010	Mar-10	171.8	0.1	5.6
	Apr-10	171.7	-0.1	5.0
	May-10	171.9	0.2	4.7
	Jun-10	172.0	0.1	4.3
	Jul-10	174.0	1.2	4.6
	Aug-10	173.7	-0.2	3.6
	Sep-10	173.8	0.1	3.7
	Oct-10	173.7	-0.1	3.2
	Nov-10	174.3	0.3	3.4
	Dec-10	173.6	-0.4	3.1
	An. Av	172.7	0.3	4.5
2011	Jan-11	176.8	1.8	3.5
	Feb-11	176.9	0.1	3.1
	Mar-11	178.3	0.8	3.8
	Apr-11	180.0	0.9	4.8
	May-11	180.8	0.5	5.2
	Jun-11	181.2	0.2	5.4
	Jul-11	182.3	0.6	4.8
	Aug-11	183.1	0.4	5.4
	Sep-11	183.0	-0.04	5.3
	Oct-11	184.4	0.8	6.1
	Nov-11	184.7	0.2	6.0
	Dec-11	186.1	0.8	7.2
An. Av	181.5	0.6	5.0	
2012	Jan-12	188.5	1.3	6.6
	Feb-12	190.1	0.8	7.4
	Mar-12	190.7	0.3	6.9
	Apr-12	191.4	0.4	6.4
	May-12	191.7	0.2	6.0
	Jun-12	191.3	-0.2	5.6
	Jul-12	193.2	1.0	6.0
	Aug-12	193.7	0.3	5.8
	Sep-12	195.3	0.8	6.7
	Oct-12	197.5	1.1	7.1
	Nov-12	198.7	0.6	7.6
	Dec-12	197.9	-0.4	6.3
	An. Av	193.3	0.5	6.5
2013	Jan-13	201.1	1.6	6.6

Chart 1: HCPI, Percentage changes from Dec. 2001

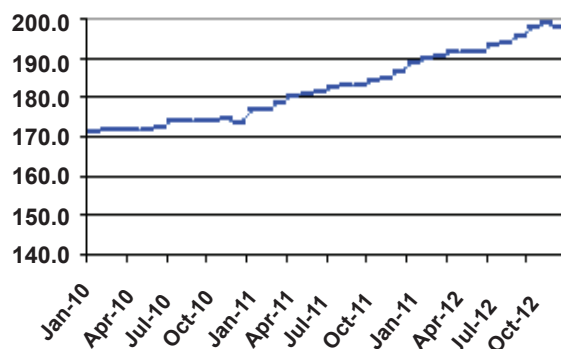


Chart 2: HCPI; Month-to-month percentage changes

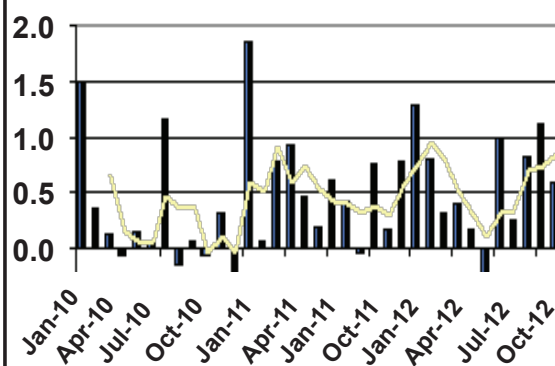


Chart 3: HCPI; Annual percentage changes

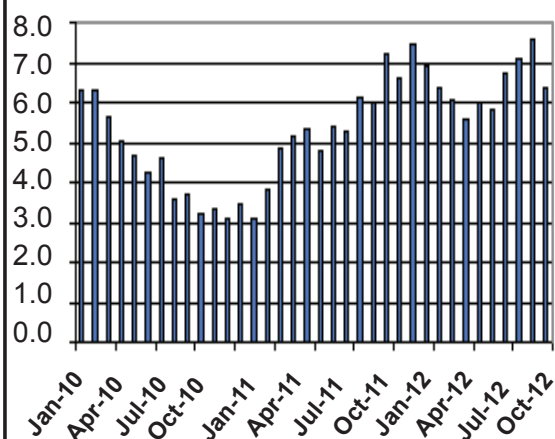


Table 2: Namibia CPI for January 2013 by main groups and sub-groups (Dec.2001=100)

	Jan - 2013 Index	Percentage changes		
		Monthly	Annual	Since last December
00. ALL ITEMS	201.1	1.6	6.6	1.6
01. FOOD AND NON-ALCOHOLIC BEVERAGES	236.4	0.4	7.8	0.4
Food	239.1	0.5	8.0	0.5
Bread and cereals	233.5	-0.4	5.4	-0.4
Meat	249.7	0.1	8.9	0.1
Fish	213.0	0.7	10.7	0.7
Milk, cheese and eggs	224.1	1.9	3.9	1.9
Oils and fats	221.6	0.6	11.5	0.6
Fruit	270.4	4.1	9.6	4.1
Vegetables including potatoes and other tubers	260.0	-1.9	12.1	-1.9
Sugar, jam, honey, syrups, chocolate and confectionery	210.2	1.2	9.0	1.2
Food products n.e.c.	201.1	0.8	4.4	0.8
Non-alcoholic beverages	206.1	-1.0	6.3	-1.0
Coffee, tea and cocoa	186.3	-0.2	3.9	-0.2
Mineral waters, soft drinks and juices	212.7	-0.9	7.2	-0.9
02. ALCOHOLIC BEVERAGES AND TOBACCO	243.9	0.5	8.9	0.5
Alcoholic beverages	232.0	0.8	11.2	0.8
Tobacco	256.0	0.3	6.0	0.3
03. CLOTHING AND FOOTWEAR	132.3	-0.2	2.5	-0.2
Clothing	126.9	-0.3	2.8	-0.3
Clothing materials	145.3	0.0	-1.2	0.0
Ready-made clothing	126.3	-0.4	3.4	-0.4
Men's clothing	144.3	1.0	3.8	1.0
Women's clothing	107.6	-1.9	5.8	-1.9
Children's clothing	123.1	-1.3	1.0	-1.3
Boys' clothing	134.3	0.7	1.9	0.7
Girls' clothing	111.3	-2.8	-3.8	-2.8
Infants' clothing	154.0	-2.4	13.4	-2.4
Other articles of clothing and clothing accessories	123.5	0.1	2.3	0.1
Dry cleaning, repair and hire of clothing	205.1	4.8	11.9	4.8
Footwear	142.4	0.1	1.3	0.1
Adult footwear	141.6	-0.5	0.6	-0.5
Children's footwear	141.3	1.5	2.1	1.5
Repair of footwear	170.3	0.0	6.0	0.0
04. HOUSING, WATER, ELECTRICITY, GAS AND OTHER FUELS	195.7	3.6	8.3	3.6
Rental payments for dwelling (both owners and renters)	174.8	7.0	6.3	7.0
Regular maintenance and repair of dwelling	229.7	-0.1	4.2	-0.1
Water supply, sewerage service and refuse collection	226.6	0.0	8.9	0.0
Electricity gas and other fuels	246.4	-0.2	12.5	-0.2
05. FURNISHINGS, HOUSEHOLD EQUIPMENT AND ROUTINE MAINTENANCE	167.9	0.3	5.7	0.3
Furniture, furnishings, decorations, carpets, floor coverings, inl. repairs	128.4	-0.8	0.7	-0.8
Furniture and furnishings	127.8	-1.2	-0.6	-1.2
Carpets and other floor coverings	110.5	0.3	2.5	0.3

Table 2: Namibia CPI for January 2013 by main groups and sub-groups (Dec.2001=100) continue

	Percentage changes			
	Jan - 2013 Index	Monthly	Annual	Since last December
Repair of furnishings and floor coverings	255.2	2.0	23.0	2.0
Household textiles	157.0	-0.1	3.3	-0.1
Heating and cooking appliances, refrigerators, washing machines and similar major household appliances, including	152.8	0.0	4.5	0.0
Glassware, tableware and household utensils	167.4	0.2	2.7	0.2
Tools and equipment for house and garden	169.1	0.5	3.5	0.5
Goods and services for routine household maintenance	196.6	1.1	8.9	1.1
06. HEALTH	147.6	3.3	3.9	3.3
Medical products, appliances and equipment	147.8	0.3	2.0	0.3
Outpatient Services, medical, dental and paramedical	182.1	7.6	7.6	7.6
Hospital services	106.6	0.0	0.0	0.0
07. TRANSPORT	221.5	0.6	6.4	0.6
Purchase of vehicles	202.1	0.6	2.7	0.6
Operation of personal transport equipment	272.7	0.0	11.3	0.0
Public transportation services	234.2	1.7	18.5	1.7
08. COMMUNICATIONS	130.0	0.0	2.2	0.0
09. RECREATION AND CULTURE	168.6	2.1	8.0	2.1
Audio-visual, photographic and data processing equip.inc.repairs	120.6	-1.0	7.7	-1.0
Other major durables for recreation and culture	140.7	0.0	9.0	0.0
Other recreational items and equipment; flowers, gardens and pets	170.8	0.3	4.2	0.3
Recreation and cultural services	174.9	0.8	4.0	0.8
Newspapers, books and stationery	179.3	0.6	9.4	0.6
Package holidays	250.3	11.3	15.1	11.3
10. EDUCATION	213.2	6.5	6.5	6.5
Pre-primary and primary education (ages 2 to 6 years)	209.7	7.3	7.3	7.3
Secondary education (ages 7 to 17 years)	189.7	4.0	4.0	4.0
Tertiary education	292.3	10.6	10.6	10.6
11. HOTELS, CAFES AND RESTAURANTS	222.3	2.6	8.9	2.6
Catering	240.1	1.3	9.9	1.3
Accommodation services	184.1	8.2	10.5	8.2
12. MISCELLANEOUS GOODS AND SERVICES	160.3	5.0	7.2	5.0
Personal care	183.7	0.0	3.5	0.0
Personal effects n.e.c.	143.3	0.5	4.0	0.5
Insurance	162.1	12.0	17.2	12.0
Financial services n.e.c.	164.9	0.0	0.0	0.0
Other services n.e.c.	172.7	3.4	3.3	3.4

Chart 4: NCPI for major groups

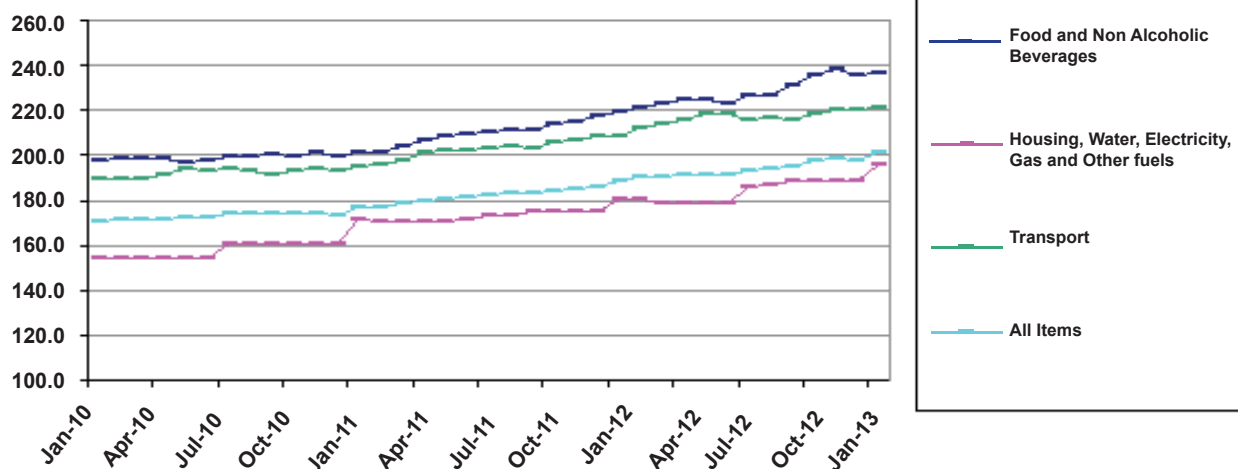


Table 3: Namibia CPI by main groups (Dec.2001=100)

	FOOD AND NON- ALCOHOLI C BEVERAG ES	ALCOHOLI C BEVERAG ES AND TOBACCO	CLOTHIN G AND FOOTWE AR	HOUSIN G, WATER, ELECTR ICITY, GAS AND OTHER FUELS	FURNIS HINGS, HOUSE HOLD EQUIP MENT AND ROUTINE MAINTEN ANCE OF THE HOUSE	HEALTH	TRANSP ORT	COMMU NICATI ONS	RECR EATIO N AND CULTU RE	EDUCAT ION	HOTEL S, CAFES AND RESTA URANTS	MISCELL ANEOUS GOODS AND SERVIC ES	ALL ITEMS	
Weights	29.63	3.26	5.13	20.59	5.61	1.51	14.79	0.90	2.50	7.36	1.62	7.11	100.0	
Year	Month													
2010	Dec-01	100.0	100.0	100.0	100.0	100.0	100.0	100.0	100.0	100.0	100.0	100.0	100.0	
	Mar-10	198.5	203.4	127.3	154.3	151.3	128.9	189.7	124.9	142.6	183.8	186.7	139.6	171.8
	Apr-10	198.3	204.1	125.7	153.9	150.1	129.4	191.6	124.9	143.2	183.8	189.7	140.4	171.7
	May-10	197.1	206.4	127.6	154.5	150.8	129.5	193.6	124.9	144.4	183.8	189.5	139.7	171.9
	Jun-10	197.4	207.0	127.8	154.6	151.8	130.5	193.0	125.0	145.0	183.8	190.2	139.6	172.0
	Jul-10	199.4	208.8	128.0	160.5	151.6	130.8	193.8	124.9	146.5	183.8	191.7	140.1	174.0
	Aug-10	199.2	208.4	127.1	160.5	150.9	131.1	192.9	124.9	144.6	183.8	193.8	141.4	173.7
	Sep-10	200.1	208.9	125.6	160.5	151.4	131.7	191.3	124.9	144.1	183.8	193.9	142.2	173.8
	Oct-10	199.9	209.0	125.0	160.6	150.7	131.7	192.7	125.4	144.7	183.8	193.8	142.3	173.7
	Nov-10	201.1	209.9	125.2	160.5	149.7	131.7	193.6	125.6	144.9	183.8	194.3	142.4	174.3
	Dec-10	199.6	209.8	124.9	160.6	150.3	131.6	193.1	125.9	144.0	183.8	195.4	142.4	173.6
	An. Av	198.9	205.8	126.7	157.4	150.8	130.4	192.0	125.1	144.0	183.8	190.9	140.8	172.7
2011	Jan-11	200.9	209.8	125.9	171.5	151.4	136.6	194.7	126.4	144.5	193.2	196.4	144.9	176.8
	Feb-11	201.3	209.4	127.0	170.6	151.2	136.7	196.0	126.4	147.0	193.2	195.6	144.3	176.9
	Mar-11	203.6	215.3	126.3	170.8	151.3	137.4	197.8	126.5	147.1	193.2	200.6	144.6	178.3
	Apr-11	206.8	218.8	126.9	170.7	152.2	137.6	200.9	126.5	148.4	193.2	200.3	144.2	180.0
	May-11	208.0	219.3	126.4	171.0	152.8	138.2	202.4	126.5	149.2	193.2	198.6	147.0	180.8
	Jun-11	208.9	220.4	126.9	171.0	154.3	138.0	202.2	126.7	148.7	193.2	198.8	147.1	181.2
	Jul-11	209.9	220.8	126.9	173.4	154.8	138.0	203.3	126.6	149.7	193.2	199.9	147.5	182.3
	Aug-11	211.0	221.6	128.4	173.7	154.5	137.9	204.3	126.6	150.4	193.2	199.4	147.3	183.1
	Sep-11	211.4	221.7	128.6	175.0	154.4	138.5	203.1	126.7	150.7	193.2	200.5	147.2	183.0
	Oct-11	213.9	221.6	130.4	175.3	155.6	138.2	205.9	127.1	152.1	193.2	201.4	147.4	184.4
	Nov-11	214.6	223.2	131.0	175.5	155.6	138.2	206.3	127.1	151.7	193.2	202.1	147.6	184.7
	Dec-11	217.7	223.5	130.4	175.4	156.9	138.2	208.1	127.1	154.2	193.2	202.5	147.5	186.1
An. Av	209.0	218.8	127.9	172.8	153.8	137.8	202.1	126.7	149.5	193.2	199.7	146.4	181.5	
2012	Jan-12	219.2	223.9	129.1	180.7	158.8	142.0	208.2	127.2	156.2	200.1	204.2	149.5	188.5
	Feb-12	221.1	227.6	129.7	180.4	158.7	142.5	211.9	127.2	160.0	200.1	204.2	154.5	190.1
	Mar-12	223.3	234.4	129.1	178.6	160.5	142.7	213.6	127.2	158.5	200.1	204.3	154.2	190.7
	Apr-12	224.4	236.3	129.0	178.5	161.7	143.0	215.9	127.2	161.1	200.1	204.9	154.2	191.4
	May-12	224.4	237.9	128.4	178.4	160.2	142.7	218.7	127.2	162.5	200.1	207.7	152.4	191.7
	Jun-12	223.0	237.5	128.7	178.5	160.8	142.8	218.2	127.2	162.5	200.1	207.9	153.5	191.3
	Jul-12	226.3	238.2	128.9	185.7	161.8	142.8	215.9	126.6	164.2	200.1	208.8	151.4	193.2
	Aug-12	226.4	239.8	129.8	186.5	162.7	142.9	216.5	126.6	164.5	200.1	210.4	152.5	193.7
	Sep-12	230.7	241.0	131.9	188.3	165.2	143.2	215.9	126.1	163.1	200.1	214.0	152.4	195.3
	Oct-12	235.6	242.9	132.2	188.3	165.2	143.5	218.4	129.2	164.6	200.1	214.2	152.6	197.5
	Nov-12	238.2	243.3	132.3	188.4	166.7	143.5	220.2	129.8	165.5	200.1	214.8	152.8	198.7
	Dec-12	235.5	242.7	132.5	188.9	167.3	142.8	220.2	130.0	165.2	200.1	216.7	152.7	197.9
An. Av	227.3	237.1	130.1	183.4	162.5	142.9	216.1	127.6	162.3	200.1	209.3	152.7	193.3	
2013	Jan-13	236.4	243.9	132.3	195.7	167.9	147.6	221.5	130.0	168.6	213.2	222.3	160.3	201.1

Table 4: Namibia CPI annual trends over the last four months (Dec 2001=100)

		Oct-12	Nov-12	Dec-12	Jan-13	Oct-12	Nov-12	Dec-12	Jan-13
1	FOOD AND NON-ALCOHOLIC BEVERAGES	235.6	238.2	235.5	236.4	10.1	11.0	8.2	7.8
2	ALCOHOLIC BEVERAGES AND TOBACCO	242.9	243.3	242.7	243.9	9.6	9.0	8.6	8.9
3	CLOTHING AND FOOTWEAR	132.2	132.3	132.5	132.3	1.5	1.1	1.6	2.5
4	HOUSING, WATER, ELECTRICITY, GAS AND OTHER FUELS	188.3	188.4	188.9	195.7	7.4	7.4	7.6	8.3
5	FURNISHINGS, HOUSEHOLD EQUIPMENT AND ROUTINE MAINTENANCE OF THE HOUSE	165.2	166.7	167.3	167.9	6.2	7.2	6.6	5.7
6	HEALTH	143.5	143.5	142.8	147.6	3.8	3.8	3.3	3.9
7	TRANSPORT	218.4	220.2	220.2	221.5	6.1	6.7	5.8	6.4
8	COMMUNICATIONS	129.2	129.8	130.0	130.0	1.7	2.1	2.3	2.3
9	RECREATION AND CULTURE	164.6	165.5	165.2	168.6	8.2	9.1	7.1	8.0
10	EDUCATION	200.1	200.1	200.1	213.2	3.6	3.6	3.6	6.5
11	HOTELS, CAFES AND RESTAURANTS	214.2	214.8	216.7	222.3	6.4	6.3	7.0	8.9
12	MISCELLANEOUS GOODS AND SERVICES	152.6	152.8	152.7	160.3	3.5	3.6	3.6	7.2
	ALL-ITEMS INDEX	197.5	198.7	197.9	201.1	7.1	7.6	6.3	6.6
	EDUCATION RELATED EXPENSES	180.2	180.8	181.1	190.1	5.2	5.3	5.1	8.3
	GOODS	201.3	202.4	202.1	202.9	6.2	6.5	5.2	4.4
	SERVICES	191.3	192.6	191.3	198.0	8.7	9.4	8.3	10.5

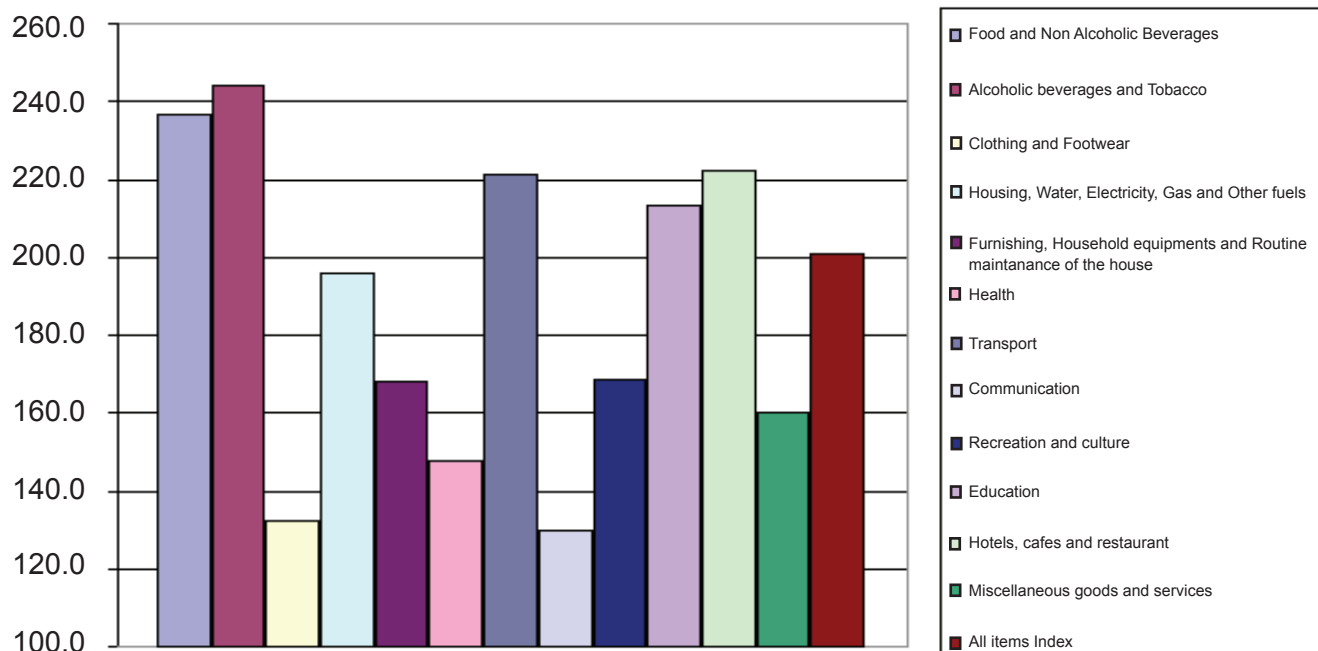
Chart 5: NCPI January 2013; Changes by all groups (Dec 2001=100)

Table 5: Namibia CPI; Goods and Services (December 2001=100)

Period	Services			Goods			
	Index	Monthly inflation rate	Annual inflation rate	Index	Monthly inflation rate	Annual inflation rate	
2010							
	Mar	163.5	0.8	5.5	177.0	-0.3	6.2
	Apr	164.0	0.3	6.1	176.6	-0.2	5.4
	May	165.3	0.8	7.2	176.1	-0.3	3.2
	June	165.7	0.2	7.2	175.9	-0.1	2.6
	July	167.7	1.2	7.2	177.9	1.1	3.2
	Aug	167.5	-0.1	6.8	177.6	-0.2	1.7
	Sept	167.6	0.0	7.2	177.8	0.1	1.7
	Oct	167.8	0.1	7.3	177.4	-0.2	0.9
	Nov	168.3	0.3	7.2	178.0	0.3	1.2
	Dec	167.6	-0.4	6.6	177.4	-0.3	1.1
	An. Av	165.8	0.5	6.6	177.1	0.1	3.4
2011							
	Jan	172.2	2.7	6.1	179.7	1.3	1.9
	Feb	172.7	0.3	6.4	179.6	-0.1	1.2
	Mar	172.6	-0.03	5.6	181.9	1.3	2.8
	Apr	172.7	0.1	5.3	184.6	1.5	4.5
	May	170.9	-1.1	3.4	187.1	1.4	6.3
	June	172.5	1.0	4.1	186.6	-0.3	6.1
	July	174.5	1.2	4.1	187.2	0.3	5.2
	Aug	174.7	0.1	4.3	188.3	0.6	6.1
	Sep	175.3	0.4	4.6	187.8	-0.3	5.7
	Oct	176.0	0.4	4.9	189.7	1.0	6.9
	Nov	176.1	0.0	4.6	190.1	0.2	6.8
	Dec	176.6	0.3	5.4	192.1	1.1	8.3
	An. Av	173.9	0.4	4.9	186.2	0.7	5.1
2012							
	Jan	179.1	1.4	4.0	194.5	1.2	8.2
	Feb	179.5	0.3	4.0	196.7	1.1	9.5
	Mar	180.3	0.4	4.4	197.2	0.3	8.4
	Apr	181.1	0.5	4.9	197.9	0.4	7.2
	May	183.2	1.1	7.2	197.1	-0.4	5.3
	June	183.7	0.3	6.5	196.1	-0.5	5.1
	July	187.2	1.9	7.2	196.9	0.4	5.2
	Aug	186.3	-0.5	6.7	198.3	0.7	5.3
	Sep	188.5	1.2	7.5	199.6	0.6	6.2
	Oct	191.3	1.5	8.7	201.3	0.9	6.2
	Nov	192.6	0.7	9.4	202.4	0.5	6.5
	Dec	191.3	-0.7	8.3	202.1	-0.2	5.2
	An. Av	185.3	0.7	6.6	198.3	0.4	6.5
2013							
	Jan	198.0	3.5	10.5	202.9	0.4	4.4



P.O.Box 2133
FGI House, Post Street Mall
Windhoek, Namibia
Tel: +264 61 431 3200
Fax: +264 61 431 3253 | +264 61 431 3240
Website: www.nsa.org.na