

Forth coming issue	Expected release date
March 2013	13 April 2013

PREFACE

The Namibia Consumer Price Index (NCPI) includes all expenditures on goods and services made by Namibian private households in urban and rural areas, and is compiled by comparing the prices of the goods and services with the prices prevailing in December 2001. It measures the rate at which the prices of consumer goods and services are changing from time to time. The prices are collected from more than 650 retail outlets in 8 localities.

The index is calculated as a weighted arithmetic average of the proportionate changes in the prices of goods and services in the basket, with the weights representing the expenditure shares on each commodity in the 1993-94 Namibia Household Income and Expenditure Survey. The index is published about 15 days after the end of the reference month to which it relates.

The CPI is widely used as a measure of the rate of inflation as experienced by households in their role as consumers. The CPI has become a key statistic for purposes of economic policy-making, especially the conduct of monetary policy.

It is often specified in legislation and in a wide variety of private contracts for the purposes of adjusting payments (such as wages, rents, interest and social security benefits) for the effects of inflation. It can, therefore, have substantial and wide-ranging financial implications for governments and businesses, as well as for households.



.....
John Steytler
STATISTICIAN - GENERAL

SUMMARY COMMENTS

The February monthly inflation rate stood at 0.4 percent while the corresponding rate for the same period last month was estimated as 1.6 percent resulting in a decline of 1.2 percentage points.

The All Items Index for February increased by 0.8 percentage points from 201.1 recorded in January to 201.9.

The Food and Non alcoholic beverages index for February 2013 increased to 237.7 from 236.4 recorded in January 2013 resulting in a monthly increase of 1.3 percentage points. This increase was caused by increases recorded in all the components comprising the Food and Non alcoholic beverages group with the exception of the meat category which registered a decline of 0.9 percent.

The average monthly and average annual inflation rates for February 2013 were estimated as 0.4 and 6.2 percent respectively. The corresponding rates for the same period last year were 0.8 and 7.4 percent.

The February 2013 annual inflation rate stood at 6.2 percent as compared to 7.4 percent recorded during February last year. The major groups comprising the Namibia CPI annual inflation rates were Food and Non alcoholic beverages (7.5 percent), Housing, water, electricity, gas and other fuels (8.5 percent) and Transport (5.1 percent).

The detailed results of the Namibia CPI for the month of February 2013 are displayed in the Tables 1-5 and in Charts 1-5 respectively.

Table 1: Namibia CPI: All-Items Index, monthly and annual percentage changes (Dec 2001 =100)

	Index	Monthly percentage changes	Annual percentage changes	
2010	Mar-10	171.8	0.1	5.6
	Apr-10	171.7	-0.1	5.0
	May-10	171.9	0.2	4.7
	Jun-10	172.0	0.1	4.3
	Jul-10	174.0	1.2	4.6
	Aug-10	173.7	-0.2	3.6
	Sep-10	173.8	0.1	3.7
	Oct-10	173.7	-0.1	3.2
	Nov-10	174.3	0.3	3.4
	Dec-10	173.6	-0.4	3.1
	An. Av	172.7	0.3	4.5
	2011	Jan-11	176.8	1.8
Feb-11		176.9	0.1	3.1
Mar-11		178.3	0.8	3.8
Apr-11		180.0	0.9	4.8
May-11		180.8	0.5	5.2
Jun-11		181.2	0.2	5.4
Jul-11		182.3	0.6	4.8
Aug-11		183.1	0.4	5.4
Sep-11		183.0	-0.04	5.3
Oct-11		184.4	0.8	6.1
Nov-11		184.7	0.2	6.0
Dec-11		186.1	0.8	7.2
An. Av	181.5	0.6	5.0	
2012	Jan-12	188.5	1.3	6.6
	Feb-12	190.1	0.8	7.4
	Mar-12	190.7	0.3	6.9
	Apr-12	191.4	0.4	6.4
	May-12	191.7	0.2	6.0
	Jun-12	191.3	-0.2	5.6
	Jul-12	193.2	1.0	6.0
	Aug-12	193.7	0.3	5.8
	Sep-12	195.3	0.8	6.7
	Oct-12	197.5	1.1	7.1
	Nov-12	198.7	0.6	7.6
	Dec-12	197.9	-0.4	6.3
An. Av	193.3	0.5	6.5	
2013	Jan-13	201.1	1.6	6.6
	Feb-13	201.9	0.4	6.2

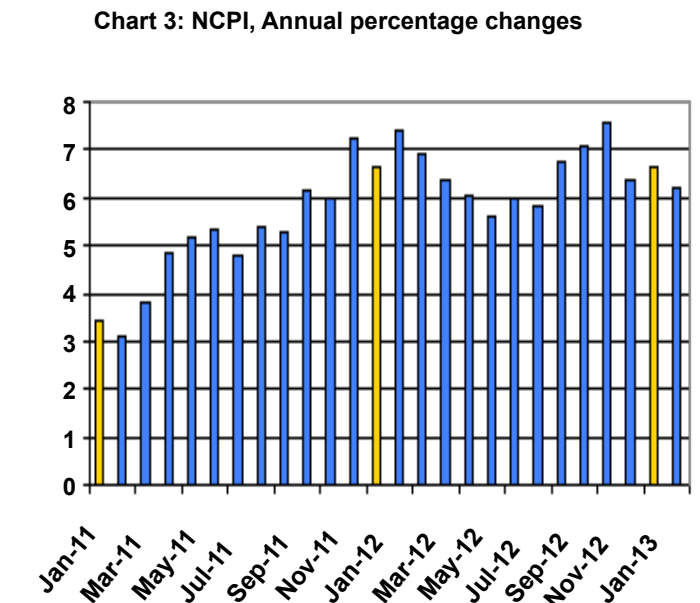
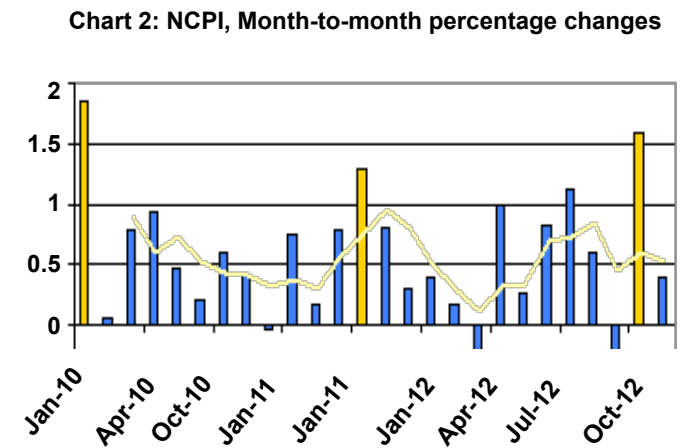
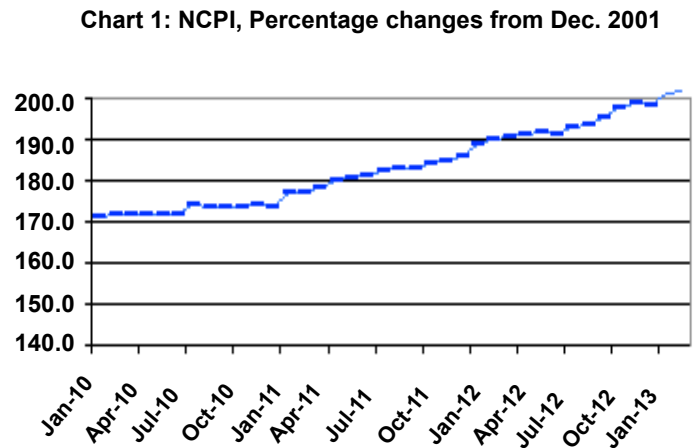


Table 2: Namibia CPI for February 2013 by main groups and sub-groups (Dec.2001=100)

	Feb - 2013 Index	Percentage changes		
		Monthl y	Annual	Since last December
00. ALL ITEMS	201.9	0.4	6.2	2.0
01. FOOD AND NON-ALCOHOLIC BEVERAGES	237.7	0.5	7.5	0.9
Food	240.1	0.4	7.6	0.9
Bread and cereals	234.2	0.3	4.9	-0.1
Meat	247.5	-0.9	6.2	-0.8
Fish	214.9	0.9	9.3	1.6
Milk, cheese and eggs	226.0	0.8	5.1	2.8
Oils and fats	225.2	1.6	12.0	2.2
Fruit	277.4	2.6	15.7	6.8
Vegetables including potatoes and other tubers	267.9	3.0	14.4	1.1
Sugar, jam, honey, syrups, chocolate and confectionery	211.9	0.8	9.8	2.0
Food products n.e.c.	203.8	1.4	5.3	2.1
Non-alcoholic beverages	209.2	1.5	6.2	0.5
Coffee, tea and cocoa	188.0	0.9	4.3	0.7
Mineral waters, soft drinks and juices	215.8	1.5	6.4	0.5
0.2 ALCOHOLIC BEVERAGES AND TOBACCO	246.1	0.9	8.1	1.4
Alcoholic beverages	234.2	0.9	8.9	1.7
Tobacco	257.8	0.7	6.7	0.9
03. CLOTHING AND FOOTWEAR	132.3	0.0	2.0	-0.2
Clothing	127.2	0.2	2.6	-0.1
Clothing materials	145.3	0.0	-1.8	0.0
Ready-made clothing	126.5	0.2	3.3	-0.2
Men's clothing	144.8	0.3	3.8	1.4
Women's clothing	107.1	-0.5	4.0	-2.4
Children's clothing	123.7	0.5	2.1	-0.8
Boys' clothing	135.0	0.5	3.5	1.3
Girls' clothing	111.8	0.5	-2.9	-2.3
Infants' clothing	154.1	0.1	13.6	-2.3
Other articles of clothing and clothing accessories	124.2	0.6	1.9	0.7
Dry cleaning, repair and hire of clothing	205.1	0.0	11.9	4.8
Footwear	141.9	-0.3	0.7	-0.3
Adult footwear	140.6	-0.7	0.5	-1.2
Children's footwear	142.1	0.6	0.6	2.1
Repair of footwear	173.7	2.0	8.1	2.0
04. HOUSING, WATER, ELECTRICITY, GAS AND OTHER FUELS	195.7	0.0	8.5	3.6
Rental payments for dwelling (both owners and renters)	174.8	0.0	6.9	7.0
Regular maintenance and repair of dwelling	229.8	0.0	5.5	-0.1
Water supply, sewerage service and refuse collection	226.6	0.0	8.9	0.0
Electricity gas and other fuels	246.5	0.1	12.1	-0.2
05. FURNISHINGS, HOUSEHOLD EQUIPMENT AND ROUTINE MAINTENANCE	169.7	1.1	7.0	1.4
Furniture, furnishings, decorations, carpets, floor coverings,inl.repairs	127.7	-0.6	-0.6	-1.4
Furniture and furnishings	127.3	-0.4	-1.8	-1.6
Carpets and other floor coverings	110.1	-0.4	1.1	-0.1
Repair of furnishings and floor coverings	250.1	-2.0	20.5	0.0
Household textiles	159.8	1.8	5.1	1.6
Heating and cooking appliances, refrigerators, washing machines and similar major household appliances, including	156.4	2.4	9.7	2.4
Glassware, tableware and household utensils	168.8	0.8	3.1	1.1
Tools and equipment for house and garden	169.3	0.1	2.1	0.7

	Goods and services for routine household maintenance	198.3	0.9	10.2	2.0
06.	HEALTH	148.0	0.3	3.9	3.6
	Medical products, appliances and equipment	148.7	0.6	2.1	0.9
	Outpatient Services, medical, dental and paramedical	182.1	0.0	7.4	7.6
	Hospital services	106.6	0.0	0.0	0.0
07.	TRANSPORT	222.7	0.6	5.1	1.1
	Purchase of vehicles	203.4	0.6	1.4	1.3
	Operation of personal transport equipment	275.1	0.9	10.1	0.9
	Public transportation services	233.4	-0.4	18.1	1.3
08.	COMMUNICATIONS	130.0	0.0	2.3	0.0
09.	RECREATION AND CULTURE	169.5	0.5	5.9	2.6
	Audio-visual, photographic and data processing equip.inc.repairs	124.2	2.9	2.0	1.9
	Other major durables for recreation and culture	135.7	-3.6	4.0	-3.6
	Other recreational items and equipment; flowers, gardens and pets	170.1	-0.4	4.7	-0.1
	Recreation and cultural services	174.9	0.0	-1.3	0.8
	Newspapers, books and stationery	179.4	0.0	7.9	0.7
	Package holidays	249.6	-0.3	19.5	11.0
10.	EDUCATION	213.2	0.0	6.5	6.5
	Pre-primary and primary education (ages 2 to 6 years)	209.7	0.0	7.3	7.3
	Secondary education (ages 7 to 17 years)	189.7	0.0	4.0	4.0
	Tertiary education	292.3	0.0	10.6	10.6
11.	HOTELS, CAFES AND RESTAURANTS	224.0	0.7	9.7	3.4
	Catering	240.7	0.3	10.6	1.6
	Accommodation services	186.2	1.2	11.4	9.5
12.	MISCELLANEOUS GOODS AND SERVICES	160.7	0.3	4.1	5.2
	Personal care	185.6	1.0	2.2	1.0
	Personal effects n.e.c.	142.9	-0.3	7.4	0.2
	Insurance	161.9	-0.1	8.4	11.9
	Financial services n.e.c.	164.9	0.0	0.0	0.0
	Other services n.e.c.	172.5	-0.1	3.2	3.2

Chart 4: NCPI for major groups

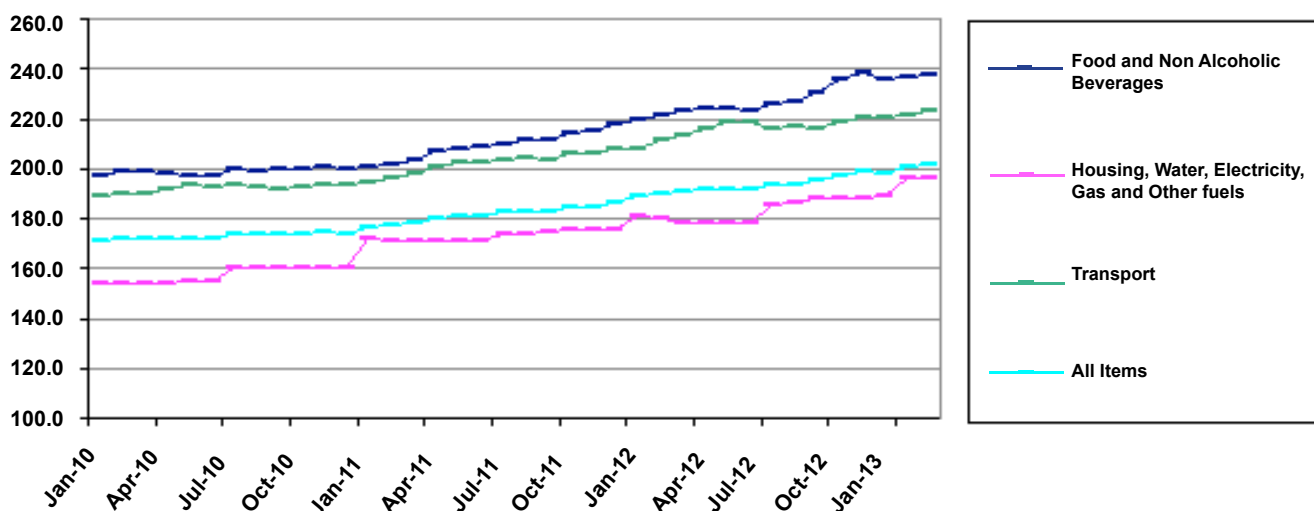


Table 3: Namibia CPI by main groups (Dec.2001=100)

	FOOD AND NON-ALCOHOLIC BEVERAGES	ALCOHOLIC BEVERAGES AND TOBACCO	CLOTHING AND FOOTWEAR	HOUSING, WATER, ELECTRICITY, GAS AND OTHER FUELS	FURNISHINGS, HOUSEHOLD EQUIPMENT AND ROUTINE MAINTENANCE OF THE HOUSE	HEALTH	TRANSPORT	COMMUNICATIONS	RECREATION AND CULTURE	EDUCATION	HOTELS, CAFES AND RESTAURANTS	MISCELLANEOUS GOODS AND SERVICES	ALL ITEMS	
Weights	29.63	3.26	5.13	20.59	5.61	1.51	14.79	0.90	2.50	7.36	1.62	7.11	100.0	
Year Month														
2010	Dec-01	100.0	100.0	100.0	100.0	100.0	100.0	100.0	100.0	100.0	100.0	100.0	100.0	
	Mar-10	198.5	203.4	127.3	154.3	151.3	128.9	189.7	124.9	142.6	183.8	186.7	139.6	171.8
	Apr-10	198.3	204.1	125.7	153.9	150.1	129.4	191.6	124.9	143.2	183.8	189.7	140.4	171.7
	May-10	197.1	206.4	127.6	154.5	150.8	129.5	193.6	124.9	144.4	183.8	189.5	139.7	171.9
	Jun-10	197.4	207.0	127.8	154.6	151.8	130.5	193.0	125.0	145.0	183.8	190.2	139.6	172.0
	Jul-10	199.4	208.8	128.0	160.5	151.6	130.8	193.8	124.9	146.5	183.8	191.7	140.1	174.0
	Aug-10	199.2	208.4	127.1	160.5	150.9	131.1	192.9	124.9	144.6	183.8	193.8	141.4	173.7
	Sep-10	200.1	208.9	125.6	160.5	151.4	131.7	191.3	124.9	144.1	183.8	193.9	142.2	173.8
	Oct-10	199.9	209.0	125.0	160.6	150.7	131.7	192.7	125.4	144.7	183.8	193.8	142.3	173.7
	Nov-10	201.1	209.9	125.2	160.5	149.7	131.7	193.6	125.6	144.9	183.8	194.3	142.4	174.3
	Dec-10	199.6	209.8	124.9	160.6	150.3	131.6	193.1	125.9	144.0	183.8	195.4	142.4	173.6
	An. Av	198.9	205.8	126.7	157.4	150.8	130.4	192.0	125.1	144.0	183.8	190.9	140.8	172.7
2011	Jan-11	200.9	209.8	125.9	171.5	151.4	136.6	194.7	126.4	144.5	193.2	196.4	144.9	176.8
	Feb-11	201.3	209.4	127.0	170.6	151.2	136.7	196.0	126.4	147.0	193.2	195.6	144.3	176.9
	Mar-11	203.6	215.3	126.3	170.8	151.3	137.4	197.8	126.5	147.1	193.2	200.6	144.6	178.3
	Apr-11	206.8	218.8	126.9	170.7	152.2	137.6	200.9	126.5	148.4	193.2	200.3	144.2	180.0
	May-11	208.0	219.3	126.4	171.0	152.8	138.2	202.4	126.5	149.2	193.2	198.6	147.0	180.8
	Jun-11	208.9	220.4	126.9	171.0	154.3	138.0	202.2	126.7	148.7	193.2	198.8	147.1	181.2
	Jul-11	209.9	220.8	126.9	173.4	154.8	138.0	203.3	126.6	149.7	193.2	199.9	147.5	182.3
	Aug-11	211.0	221.6	128.4	173.7	154.5	137.9	204.3	126.6	150.4	193.2	199.4	147.3	183.1
	Sep-11	211.4	221.7	128.6	175.0	154.4	138.5	203.1	126.7	150.7	193.2	200.5	147.2	183.0
	Oct-11	213.9	221.6	130.4	175.3	155.6	138.2	205.9	127.1	152.1	193.2	201.4	147.4	184.4
	Nov-11	214.6	223.2	131.0	175.5	155.6	138.2	206.3	127.1	151.7	193.2	202.1	147.6	184.7
	Dec-11	217.7	223.5	130.4	175.4	156.9	138.2	208.1	127.1	154.2	193.2	202.5	147.5	186.1
	An. Av	209.0	218.8	127.9	172.8	153.8	137.8	202.1	126.7	149.5	193.2	199.7	146.4	181.5
2012	Jan-12	219.2	223.9	129.1	180.7	158.8	142.0	208.2	127.2	156.2	200.1	204.2	149.5	188.5
	Feb-12	221.1	227.6	129.7	180.4	158.7	142.5	211.9	127.2	160.0	200.1	204.2	154.5	190.1
	Mar-12	223.3	234.4	129.1	178.6	160.5	142.7	213.6	127.2	158.5	200.1	204.3	154.2	190.7
	Apr-12	224.4	236.3	129.0	178.5	161.7	143.0	215.9	127.2	161.1	200.1	204.9	154.2	191.4
	May-12	224.4	237.9	128.4	178.4	160.2	142.7	218.7	127.2	162.5	200.1	207.7	152.4	191.7
	Jun-12	223.0	237.5	128.7	178.5	160.8	142.8	218.2	127.2	162.5	200.1	207.9	153.5	191.3
	Jul-12	226.3	238.2	128.9	185.7	161.8	142.8	215.9	126.6	164.2	200.1	208.8	151.4	193.2
	Aug-12	226.4	239.8	129.8	186.5	162.7	142.9	216.5	126.6	164.5	200.1	210.4	152.5	193.7
	Sep-12	230.7	241.0	131.9	188.3	165.2	143.2	215.9	126.1	163.1	200.1	214.0	152.4	195.3
	Oct-12	235.6	242.9	132.2	188.3	165.2	143.5	218.4	129.2	164.6	200.1	214.2	152.6	197.5
	Nov-12	238.2	243.3	132.3	188.4	166.7	143.5	220.2	129.8	165.5	200.1	214.8	152.8	198.7
	Dec-12	235.5	242.7	132.5	188.9	167.3	142.8	220.2	130.0	165.2	200.1	216.7	152.7	197.9
	An. Av	227.3	237.1	130.1	183.4	162.5	142.9	216.1	127.6	162.3	200.1	209.3	152.7	193.3
2013	Jan-13	236.4	243.9	132.3	195.7	167.9	147.6	221.5	130.0	168.6	213.2	222.3	160.3	201.1
	Feb-13	237.7	246.1	132.3	195.7	169.7	148.0	222.7	130.0	169.5	213.2	224.0	160.7	201.9

Table 4: Namibia CPI annual trends over the last four months (Dec 2001=100)

		Index (Dec. 2001 = 100)				Annual changes for last four months			
		Nov-12	Dec-12	Jan-13	Feb-13	Nov-12	Dec-12	Jan-13	Feb-13
1	FOOD AND NON-ALCOHOLIC BEVERAGES	238.2	235.5	236.4	237.7	11.0	8.2	7.8	7.5
2	ALCOHOLIC BEVERAGES AND TOBACCO	243.3	242.7	243.9	246.1	9.0	8.6	8.9	8.1
3	CLOTHING AND FOOTWEAR	132.3	132.5	132.3	132.3	1.1	1.6	2.5	2.0
4	HOUSING, WATER, ELECTRICITY, GAS AND OTHER FUELS	188.4	188.9	195.7	195.7	7.4	7.6	8.3	8.5
5	FURNISHINGS, HOUSEHOLD EQUIPMENT AND ROUTINE MAINTENANCE OF THE HOUSE	166.7	167.3	167.9	169.7	7.2	6.6	5.7	7.0
6	HEALTH	143.5	142.8	147.6	148.0	3.8	3.3	3.9	3.9
7	TRANSPORT	220.2	220.2	221.5	222.7	6.7	5.8	6.4	5.1
8	COMMUNICATIONS	129.8	130.0	130.0	130.0	2.1	2.3	2.3	2.2
9	RECREATION AND CULTURE	165.5	165.2	168.6	169.5	9.1	7.1	8.0	5.9
10	EDUCATION	200.1	200.1	213.2	213.2	3.6	3.6	6.5	6.5
11	HOTELS, CAFES AND RESTAURANTS	214.8	216.7	222.3	224.0	6.3	7.0	8.9	9.7
12	MISCELLANEOUS GOODS AND SERVICES	152.8	152.7	160.3	160.7	3.6	3.6	7.2	4.1
	ALL-ITEMS INDEX	198.7	197.9	201.1	201.9	7.6	6.3	6.6	6.2
	EDUCATION RELATED EXPENSES	180.8	181.1	190.1	189.6	5.3	5.1	8.3	7.4
	GOODS	202.4	202.1	202.9	204.4	6.5	5.2	4.4	3.9
	SERVICES	192.6	191.3	198.0	197.7	9.4	8.3	10.5	10.1

Chart 5: NCPI February 2013; Changes by all groups (Dec 2001=100)

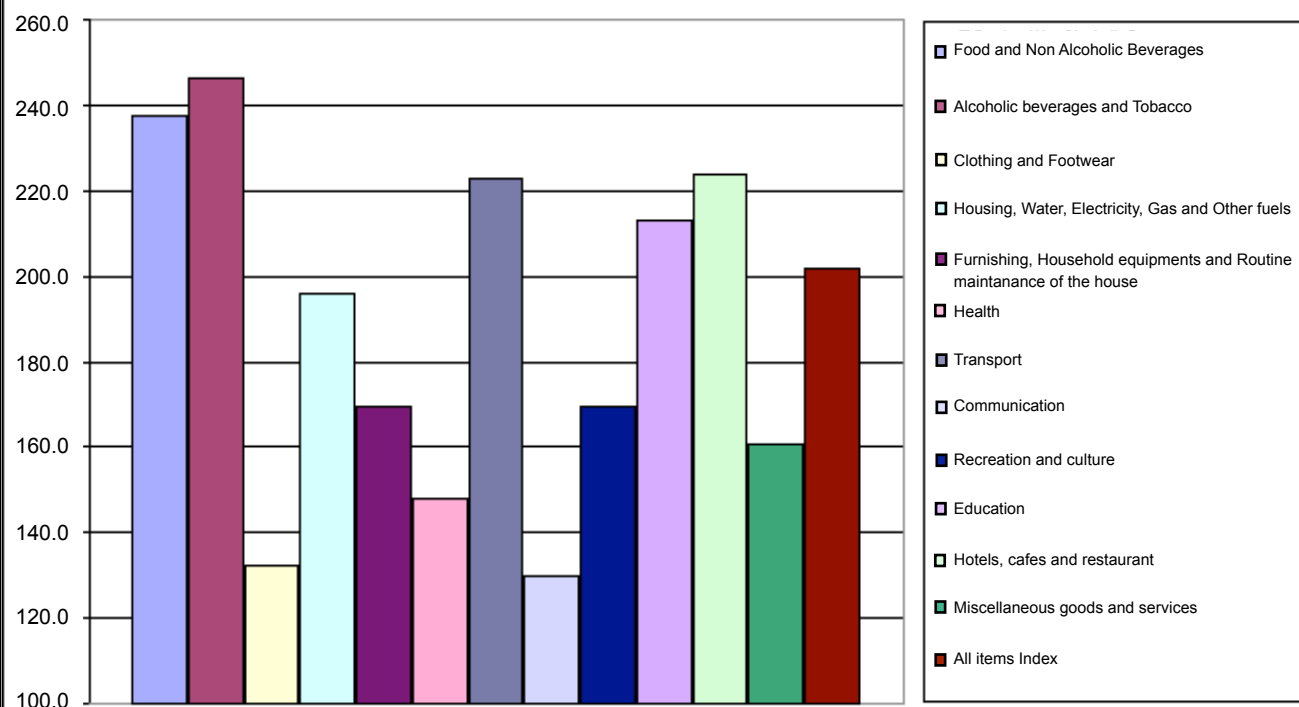


Table 5: Namibia CPI; Goods and Services (December 2001=100)

Period	Services			Goods			
	Index	monthly inflation rate	Annual inflation rate	Index	monthly inflation rate	Annual inflation rate	
2010	Mar	163.5	0.8	5.5	177.0	-0.3	6.2
	Apr	164.0	0.3	6.1	176.6	-0.2	5.4
	May	165.3	0.8	7.2	176.1	-0.3	3.2
	June	165.7	0.2	7.2	175.9	-0.1	2.6
	July	167.7	1.2	7.2	177.9	1.1	3.2
	Aug	167.5	-0.1	6.8	177.6	-0.2	1.7
	Sept	167.6	0.0	7.2	177.8	0.1	1.7
	Oct	167.8	0.1	7.3	177.4	-0.2	0.9
	Nov	168.3	0.3	7.2	178.0	0.3	1.2
	Dec	167.6	-0.4	6.6	177.4	-0.3	1.1
	An. Av	165.8	0.5	6.6	177.1	0.1	3.4
2011	Jan	172.2	2.7	6.1	179.7	1.3	1.9
	Feb	172.7	0.3	6.4	179.6	-0.1	1.2
	Mar	172.6	-0.03	5.6	181.9	1.3	2.8
	Apr	172.7	0.1	5.3	184.6	1.5	4.5
	May	170.9	-1.1	3.4	187.1	1.4	6.3
	June	172.5	1.0	4.1	186.6	-0.3	6.1
	July	174.5	1.2	4.1	187.2	0.3	5.2
	Aug	174.7	0.1	4.3	188.3	0.6	6.1
	Sep	175.3	0.4	4.6	187.8	-0.3	5.7
	Oct	176.0	0.4	4.9	189.7	1.0	6.9
	Nov	176.1	0.0	4.6	190.1	0.2	6.8
	Dec	176.6	0.3	5.4	192.1	1.1	8.3
	An. Av	173.9	0.4	4.9	186.2	0.7	5.1
2012	Jan	179.1	1.4	4.0	194.5	1.2	8.2
	Feb	179.5	0.3	4.0	196.7	1.1	9.5
	Mar	180.3	0.4	4.4	197.2	0.3	8.4
	Apr	181.1	0.5	4.9	197.9	0.4	7.2
	May	183.2	1.1	7.2	197.1	-0.4	5.3
	June	183.7	0.3	6.5	196.1	-0.5	5.1
	July	187.2	1.9	7.2	196.9	0.4	5.2
	Aug	186.3	-0.5	6.7	198.3	0.7	5.3
	Sep	188.5	1.2	7.5	199.6	0.6	6.2
	Oct	191.3	1.5	8.7	201.3	0.9	6.2
	Nov	192.6	0.7	9.4	202.4	0.5	6.5
	Dec	191.3	-0.7	8.3	202.1	-0.2	5.2
	An. Av	185.3	0.7	6.6	198.3	0.4	6.5
2013	Jan	198.0	3.5	10.5	202.9	0.4	4.4
	Feb	197.7	-0.1	10.1	204.4	0.7	3.9



P.O.Box 2133
FGI House, Post Street Mall
Windhoek, Namibia
Tel: +264 61 431 3200
Fax: +264 61 431 3253 | +264 61 431 3240
Website: www.nsa.org.na