

# **NAMIBIA CONSUMER PRICE INDEX BULLETIN**

## **AUGUST 2012**



Est. by Statistics Act 9 of 2011

**Namibia Statistics  
Agency**

Forth coming issue

**Expected release date**

September 2012

**12 October 2012**

## PREFACE

The Namibia CPI includes all Namibian private households living in urban and rural areas and is compiled by comparing the prices of the goods and services with the prices prevailing in December 2001. It measures the rate at which the prices of consumer goods and services are changing from month to month. The prices are collected from more than 650 retail outlets in 8 localities.

The index is calculated as a weighted arithmetic average of the proportionate changes in the prices of goods and services in the basket, with the weights representing the expenditure shares on each commodity in the 1993-94 Namibia Household Income and Expenditure Survey. The index is published about 15 days after the end of the reference month to which it relates.

The Consumer Price Index (CPI) is widely used as a measure of the rate of inflation as experienced by households in their role as consumers. The CPI has become a key statistics for purposes of economic policy-making, especially the conduct of monetary policy.

It is often specified in legislation and in a wide variety of private contracts for the purposes of adjusting payments (such as wages, rents, interest and social security benefits) for the effects of inflation. It can therefore have substantial and wide-ranging financial implications for governments and businesses, as well as for households.



.....  
**John Steytler**  
**STATISTICIAN - GENERAL**

## SUMMARY COMMENTS

The monthly inflation rate for August 2012 was estimated at 0.3 percent, compared to the July 2012 rate of 1.0 percent. This decrease resulted from monthly decreases recorded in the following subgroups of Package holiday (-4.1 percent), Vegetables including potatoes and other tubers (-2.4 percent), Food products n.e.c (-2.1 percent), Public transportation services (-2.0 percent), Milk, cheese and eggs (-1.7 percent), Children's footwear (-1.0 percent), Glassware, tableware and household utensils (-1.0 percent).

The All Items Index for August increased by 0.5 percentage points from 193.2 in July 2012 to 193.7.

The index for Food and Non Alcoholic Beverages for August 2012 increased to 226.4 a monthly increase of 0.1 percentage points from 226.3 recorded in August 2012. This increase was due to increases recorded in the subgroups of Fish (2.6 percent), Fruit (1.7 percent) Bread and cereals (1.6 percent), Non-alcoholic beverages (0.8 percent), Mineral waters, soft drinks and juices (0.8 percent) and Sugar, jam honey, syrups, chocolate and confectionery (0.6 percent).

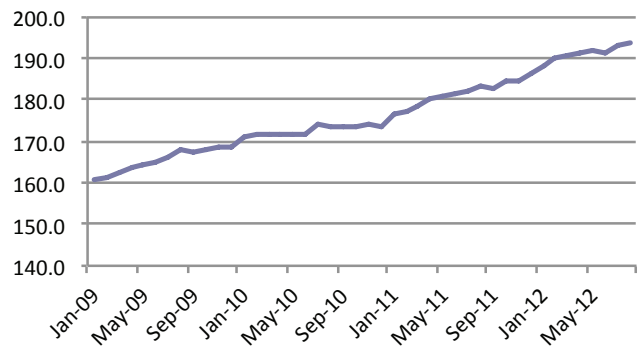
The annual inflation rate for August 2012 stood at 5.8 percent compared to 5.4 percent recorded during the same period last year. The annual inflation rates for the major groups comprising the NCPI were Food and Non-Alcoholic Beverages (7.3 percent), Housing, Water, Electricity, Gas and Other Fuels (7.4 percent) and Transport (6.0 percent).

The detailed results of the NCPI for the month of August 2012 as displayed in the Tables 1-5 and in Charts 1-5 respectively.

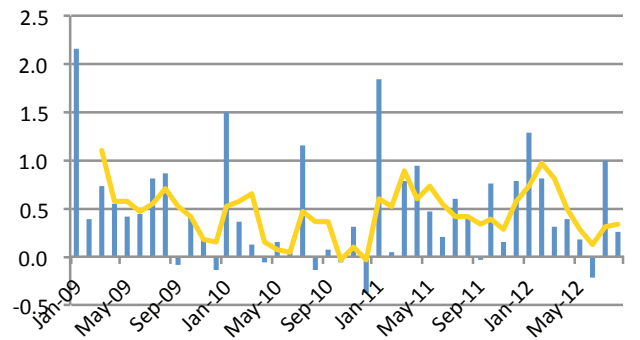
**Table 1: Namibia CPI: All-Items Index on base Dec.2001, monthly and annual percentage changes**

	Index	Monthly percentage changes	Annual percentage changes	
<b>2009</b>	Jan-09	160.8	2.2	11.6
	Feb-09	161.4	0.4	11.6
	Mar-09	162.6	0.7	11.2
	Apr-09	163.5	0.6	10.0
	May-09	164.2	0.4	9.6
	Jun-09	164.9	0.4	9.1
	Jul-09	166.3	0.8	7.5
	Aug-09	167.7	0.9	7.6
	Sep-09	167.6	-0.1	7.1
	Oct-09	168.3	0.4	7.1
	Nov-09	168.6	0.2	6.7
	Dec-09	168.4	-0.1	7.0
<b>An. Av</b>	<b>165.4</b>	<b>0.6</b>	<b>8.8</b>	
<b>2010</b>	Jan-10	170.9	1.5	6.3
	Feb-10	171.6	0.4	6.3
	Mar-10	171.8	0.1	5.6
	Apr-10	171.7	-0.1	5.0
	May-10	171.9	0.2	4.7
	Jun-10	172.0	0.1	4.3
	Jul-10	174.0	1.2	4.6
	Aug-10	173.7	-0.2	3.6
	Sep-10	173.8	0.1	3.7
	Oct-10	173.7	-0.1	3.2
	Nov-10	174.3	0.3	3.4
	Dec-10	173.6	-0.4	3.1
<b>An. Av</b>	<b>172.7</b>	<b>0.3</b>	<b>4.5</b>	
<b>2011</b>	Jan-11	176.8	1.8	3.5
	Feb-11	176.9	0.1	3.1
	Mar-11	178.3	0.8	3.8
	Apr-11	180.0	0.9	4.8
	May-11	180.8	0.5	5.2
	Jun-11	181.2	0.2	5.4
	Jul-11	182.3	0.6	4.8
	Aug-11	183.1	0.4	5.4
	Sep-11	183.0	-0.04	5.3
	Oct-11	184.4	0.8	6.1
	Nov-11	184.7	0.2	6.0
	Dec-11	186.1	0.8	7.2
<b>An. Av</b>	<b>181.5</b>	<b>0.6</b>	<b>5.0</b>	
<b>2012</b>	Jan-12	188.5	1.3	6.6
	Feb-12	190.1	0.8	7.4
	Mar-12	190.7	0.3	6.9
	Apr-12	191.4	0.4	6.4
	May-12	191.7	0.2	6.0
	Jun-12	191.3	-0.2	5.6
	Jul-12	193.2	1.0	6.0
	Aug-12	193.7	0.3	5.8

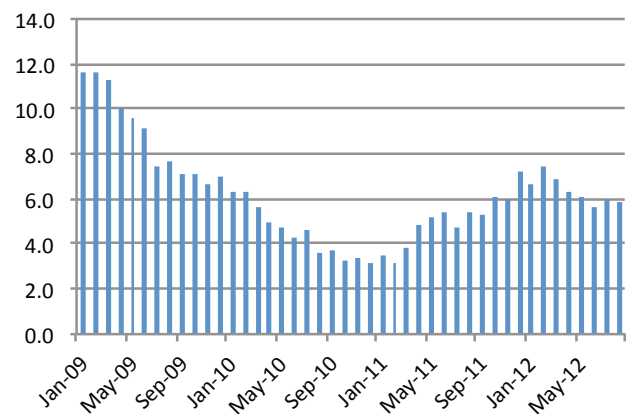
**Chart 1: NCPI, Percentage changes from Dec. 2001**



**Chart 2: NCPI; Month-to-month percentage changes**



**Chart 3: NCPI; Annual percentage changes**

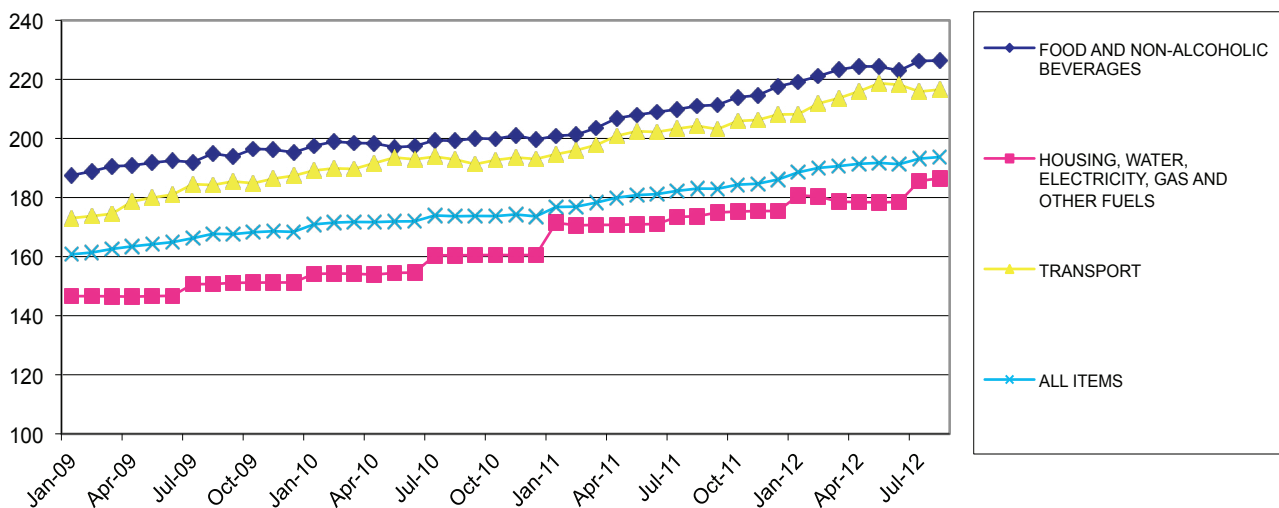


**Table 2: Namibia CPI for August 2012 by main groups and sub-groups (Dec.2001=100)**

		August - 2012 Index	Percentage changes		
			Monthly	Annual	Since last December
<b>00.</b>	<b>ALL ITEMS</b>	<b>193.7</b>	<b>0.3</b>	<b>5.8</b>	<b>4.1</b>
<b>01.</b>	<b>FOOD AND NON-ALCOHOLIC BEVERAGES</b>	<b>226.4</b>	<b>0.1</b>	<b>7.3</b>	<b>4.0</b>
	Food	228.2	0.0	7.2	3.8
	Bread and cereals	225.8	1.6	6.5	3.0
	Meat	236.7	-0.4	10.3	5.1
	Fish	202.5	2.6	-2.0	5.7
	Milk, cheese and eggs	222.2	-1.7	3.2	2.8
	Oils and fats	214.3	-0.2	11.3	9.5
	Fruit	230.8	1.7	3.3	-5.4
	Vegetables including potatoes and other tubers	243.8	-2.4	0.4	3.7
	Sugar, jam, honey, syrups, chocolate and confectionery	206.7	0.6	11.7	7.5
	Food products n.e.c.	193.1	-2.1	4.1	0.4
	Non-alcoholic beverages	205.5	0.8	8.9	6.2
	Coffee, tea and cocoa	186.0	-0.2	6.7	4.3
	Mineral waters, soft drinks and juices	211.7	0.8	9.4	6.3
<b>02.</b>	<b>ALCOHOLIC BEVERAGES AND TOBACCO</b>	<b>239.8</b>	<b>0.7</b>	<b>8.2</b>	<b>7.3</b>
	Alcoholic beverages	227.3	0.2	11.2	9.2
	Tobacco	253.4	1.5	4.1	5.0
<b>03.</b>	<b>CLOTHING AND FOOTWEAR</b>	<b>129.8</b>	<b>0.7</b>	<b>1.0</b>	<b>-0.5</b>
	Clothing	124.1	0.4	1.7	-0.5
	Clothing materials	145.4	-0.3	-1.6	-1.1
	Ready-made clothing	123.5	0.4	2.4	-0.2
	Men's clothing	138.0	0.0	-1.4	-2.7
	Women's clothing	107.7	1.2	7.7	5.1
	Children's clothing	122.2	0.3	3.3	-0.7
	Boys' clothing	129.9	0.1	0.6	-3.0
	Girls' clothing	112.9	0.4	1.5	-2.8
	Infants' clothing	152.0	0.6	16.5	12.0
	Other articles of clothing and clothing accessories	117.8	0.8	-1.0	-1.3
	Dry cleaning, repair and hire of clothing	195.1	0.0	6.4	6.4
	Footwear	140.4	1.2	-0.5	-1.0
	Adult footwear	139.4	2.2	-1.4	-1.1
	Children's footwear	139.3	-1.0	1.3	-1.8
	Repair of footwear	173.2	0.0	7.8	7.8
<b>04.</b>	<b>HOUSING, WATER, ELECTRICITY, GAS AND OTHER FUELS</b>	<b>186.5</b>	<b>0.5</b>	<b>7.4</b>	<b>6.3</b>
	Rental payments for dwelling (both owners and renters)	161.3	0.0	2.7	2.7
	Regular maintenance and repair of dwelling	223.2	0.1	6.3	1.6
	Water supply, sewerage service and refuse collection	226.6	3.2	8.9	8.9
	Electricity gas and other fuels	244.7	0.8	15.1	11.9
<b>05.</b>	<b>FURNISHINGS, HOUSEHOLD EQUIPMENT AND ROUTINE MAINTENANCE</b>	<b>162.7</b>	<b>0.6</b>	<b>5.3</b>	<b>3.6</b>
	Furniture, furnishings, decorations, carpets, floor coverings, incl. repairs	125.7	0.0	-0.9	-1.6
	Furniture and furnishings	125.7	-0.2	-1.4	-2.3
	Carpets and other floor coverings	111.4	1.4	2.8	2.3
	Repair of furnishings and floor coverings	224.2	0.0	8.1	8.1
	Household textiles	156.4	0.5	4.6	3.0
	Heating and cooking appliances, refrigerators, washing machines and similar major household appliances, including	146.8	-0.2	3.1	1.3
	Glassware, tableware and household utensils	163.4	-1.0	0.8	0.9

	Tools and equipment for house and garden	167.2	-0.6	3.7	3.1
	Goods and services for routine household maintenance	188.3	2.0	9.0	6.5
<b>06.</b>	<b>HEALTH</b>	<b>142.9</b>	<b>0.1</b>	<b>3.6</b>	<b>3.4</b>
	Medical products, appliances and equipment	147.4	0.3	2.8	1.8
	Outpatient Services, medical, dental and paramedical	169.2	0.0	7.8	8.0
<b>07.</b>	<b>TRANSPORT</b>	<b>216.5</b>	<b>0.3</b>	<b>6.0</b>	<b>4.0</b>
	Hospital services	106.6	0.0	0.0	0.0
	Purchase of vehicles	201.3	-0.5	3.4	2.4
	Operation of personal transport equipment	259.3	2.6	10.7	6.0
	Public transportation services	217.6	-2.0	8.7	9.6
<b>08.</b>	<b>COMMUNICATIONS</b>	<b>126.6</b>	<b>0.0</b>	<b>0.0</b>	<b>-0.4</b>
<b>09.</b>	<b>RECREATION AND CULTURE</b>	<b>164.5</b>	<b>0.2</b>	<b>9.4</b>	<b>6.7</b>
	Audio-visual, photographic and data processing equip.inc.repairs	126.6	-1.2	12.6	16.5
	Other major durables for recreation and culture	130.8	0.0	5.5	1.5
	Other recreational items and equipment; flowers, gardens and pets	165.4	0.7	1.2	2.0
	Recreation and cultural services	173.4	0.0	11.9	6.3
	Newspapers, books and stationery	176.9	2.3	4.9	5.8
	Package holidays	218.2	-4.1	29.4	-0.1
<b>10.</b>	<b>EDUCATION</b>	<b>200.1</b>	<b>0.0</b>	<b>3.6</b>	<b>3.6</b>
	Pre-primary and primary education (ages 2 to 6 years)	195.5	0.0	4.6	4.6
	Secondary education (ages 7 to 17 years)	182.4	0.0	3.1	3.1
	Tertiary education	264.3	0.0	1.0	1.0
<b>11.</b>	<b>HOTELS, CAFES AND RESTAURANTS</b>	<b>210.4</b>	<b>0.8</b>	<b>5.6</b>	<b>3.9</b>
	Catering	225.5	1.0	5.9	3.6
	Accommodation services	170.7	0.2	4.3	4.3
<b>12.</b>	<b>MISCELLANEOUS GOODS AND SERVICES</b>	<b>152.5</b>	<b>0.7</b>	<b>3.5</b>	<b>3.4</b>
	Personal care	185.0	2.6	4.0	4.1
	Personal effects n.e.c.	139.4	1.7	7.2	5.8
	Insurance	144.7	0.0	6.6	6.6
	Financial services n.e.c.	164.9	0.0	0.0	0.0
	Other services n.e.c.	167.0	0.0	-2.2	-2.2

Chart 4: NCPI for major groups



**Table 3: Namibia CPI by main groups (Dec.2001=100)**

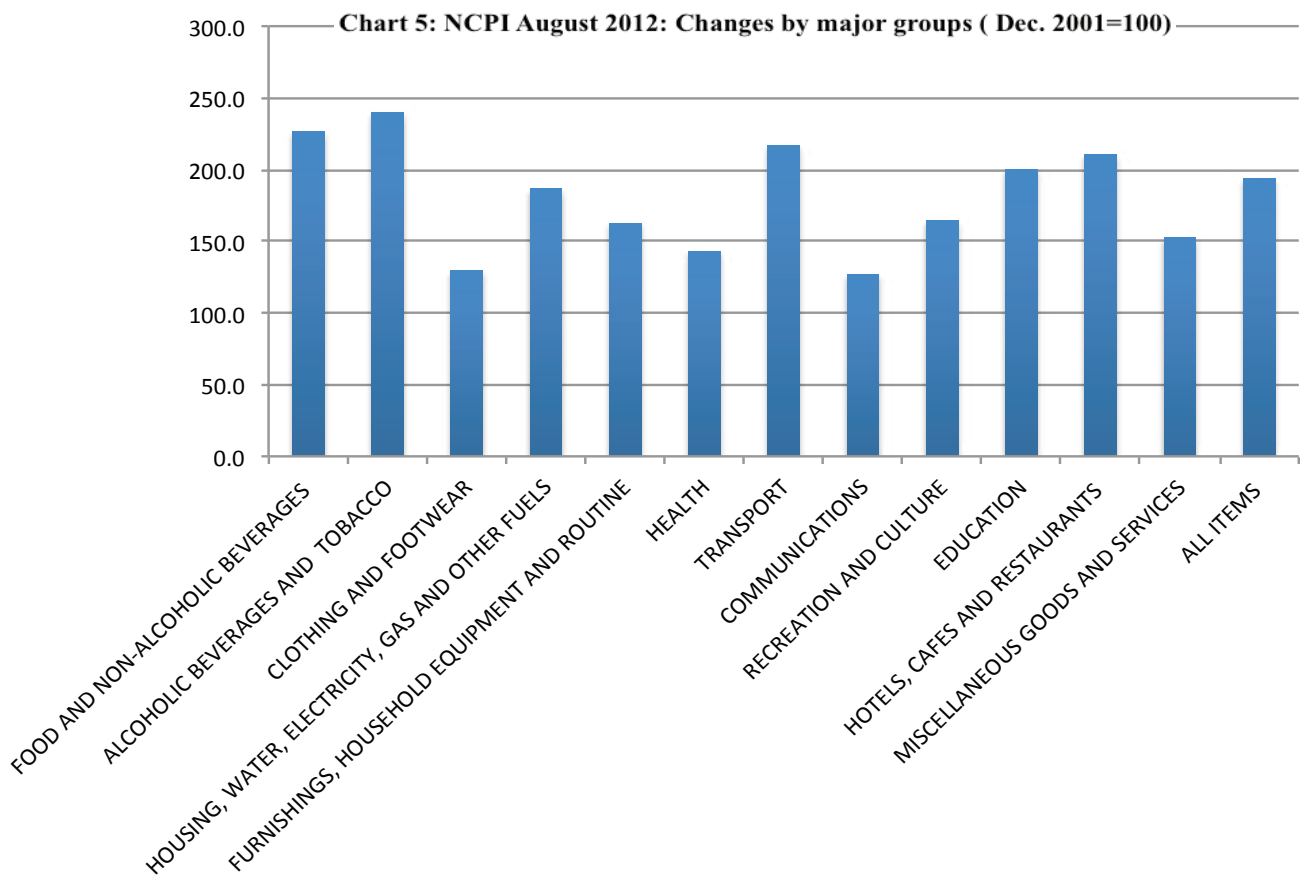
	FOOD AND NON-ALCOHOLIC BEVERAGES	ALCOHOLIC BEVERAGES AND TOBACCO	CLOTHING AND FOOTWEAR	HOUSING, WATER, ELECTRICITY, GAS AND OTHER FUELS	FURNISHINGS, HOUSEHOLD EQUIPMENT AND ROUTINE MAINTENANCE OF THE HOUSE	HEALTH	TRANSPORT	COMMUNICATIONS	RECREATION AND CULTURE	EDUCATION	HOTELS, CAFES AND RESTAURANTS	MISCELLANEOUS GOODS AND SERVICES	ALL ITEMS	
Weights	29.63	3.26	5.13	20.59	5.61	1.51	14.79	0.90	2.50	7.36	1.62	7.11	100.0	
Year	Month													
<b>2009</b>	Jan-09	187.5	174.8	115.8	146.7	144.8	120.5	173.0	123.0	136.5	174.6	171.6	132.8	160.8
	Feb-09	188.9	175.1	115.9	146.6	145.4	122.2	173.7	123.1	136.6	174.6	171.6	133.3	161.4
	Mar-09	190.6	183.6	119.4	146.6	147.6	123.5	174.5	123.1	137.0	174.6	172.5	133.3	162.6
	Apr-09	190.9	185.3	119.3	146.5	147.2	124.5	178.7	123.1	137.7	174.6	172.6	134.4	163.5
	May-09	191.8	185.6	119.8	146.6	147.9	124.8	180.0	123.1	136.6	174.6	174.3	134.7	164.2
	Jun-09	192.5	186.4	121.9	146.8	149.1	125.0	181.0	123.1	138.1	174.6	174.9	135.4	164.9
	Jul-09	192.0	187.9	124.3	150.7	148.7	125.7	184.5	123.1	140.8	174.6	179.0	135.9	166.3
	Aug-09	195.0	191.9	125.0	150.7	148.7	125.2	184.3	123.1	142.4	174.6	178.5	135.9	167.7
	Sep-09	193.9	192.1	126.5	151.1	149.4	125.6	185.5	123.2	141.0	174.6	180.9	136.3	167.6
	Oct-09	196.5	193.8	126.7	151.2	149.6	125.7	184.9	124.7	141.1	174.6	181.1	137.0	168.3
	Nov-09	196.3	194.6	128.5	151.3	150.4	125.7	186.4	124.6	142.1	174.6	181.0	136.5	168.6
	Dec-09	195.3	195.6	128.5	151.3	148.9	125.8	187.4	124.6	143.1	174.6	181.3	136.6	168.4
<b>An. Av</b>	<b>192.6</b>	<b>187.2</b>	<b>122.6</b>	<b>148.8</b>	<b>148.2</b>	<b>124.5</b>	<b>181.2</b>	<b>123.5</b>	<b>139.4</b>	<b>174.6</b>	<b>176.6</b>	<b>135.2</b>	<b>165.4</b>	
<b>2010</b>	Jan-10	197.5	196.3	128.1	154.2	150.6	128.9	189.2	124.9	141.7	183.8	185.6	139.6	170.9
	Feb-10	199.0	197.0	127.5	154.3	150.6	128.8	189.9	124.6	142.5	183.8	186.0	140.1	171.6
	Mar-10	198.5	203.4	127.3	154.3	151.3	128.9	189.7	124.9	142.6	183.8	186.7	139.6	171.8
	Apr-10	198.3	204.1	125.7	153.9	150.1	129.4	191.6	124.9	143.2	183.8	189.7	140.4	171.7
	May-10	197.1	206.4	127.6	154.5	150.8	129.5	193.6	124.9	144.4	183.8	189.5	139.7	171.9
	Jun-10	197.4	207.0	127.8	154.6	151.8	130.5	193.0	125.0	145.0	183.8	190.2	139.6	172.0
	Jul-10	199.4	208.8	128.0	160.5	151.6	130.8	193.8	124.9	146.5	183.8	191.7	140.1	174.0
	Aug-10	199.2	208.4	127.1	160.5	150.9	131.1	192.9	124.9	144.6	183.8	193.8	141.4	173.7
	Sep-10	200.1	208.9	125.6	160.5	151.4	131.7	191.3	124.9	144.1	183.8	193.9	142.2	173.8
	Oct-10	199.9	209.0	125.0	160.6	150.7	131.7	192.7	125.4	144.7	183.8	193.8	142.3	173.7
	Nov-10	201.1	209.9	125.2	160.5	149.7	131.7	193.6	125.6	144.9	183.8	194.3	142.4	174.3
	Dec-10	199.6	209.8	124.9	160.6	150.3	131.6	193.1	125.9	144.0	183.8	195.4	142.4	173.6
<b>An. Av</b>	<b>198.9</b>	<b>205.8</b>	<b>126.7</b>	<b>157.4</b>	<b>150.8</b>	<b>130.4</b>	<b>192.0</b>	<b>125.1</b>	<b>144.0</b>	<b>183.8</b>	<b>190.9</b>	<b>140.8</b>	<b>172.7</b>	
<b>2011</b>	Jan-11	200.9	209.8	125.9	171.5	151.4	136.6	194.7	126.4	144.5	193.2	196.4	144.9	176.8
	Feb-11	201.3	209.4	127.0	170.6	151.2	136.7	196.0	126.4	147.0	193.2	195.6	144.3	176.9
	Mar-11	203.6	215.3	126.3	170.8	151.3	137.4	197.8	126.5	147.1	193.2	200.6	144.6	178.3
	Apr-11	206.8	218.8	126.9	170.7	152.2	137.6	200.9	126.5	148.4	193.2	200.3	144.2	180.0
	May-11	208.0	219.3	126.4	171.0	152.8	138.2	202.4	126.5	149.2	193.2	198.6	147.0	180.8
	Jun-11	208.9	220.4	126.9	171.0	154.3	138.0	202.2	126.7	148.7	193.2	198.8	147.1	181.2
	Jul-11	209.9	220.8	126.9	173.4	154.8	138.0	203.3	126.6	149.7	193.2	199.9	147.5	182.3
	Aug-11	211.0	221.6	128.4	173.7	154.5	137.9	204.3	126.6	150.4	193.2	199.4	147.3	183.1
	Sep-11	211.4	221.7	128.6	175.0	154.4	138.5	203.1	126.7	150.7	193.2	200.5	147.2	183.0
	Oct-11	213.9	221.6	130.4	175.3	155.6	138.2	205.9	127.1	152.1	193.2	201.4	147.4	184.4
	Nov-11	214.6	223.2	131.0	175.5	155.6	138.2	206.3	127.1	151.7	193.2	202.1	147.6	184.7
	Dec-11	217.7	223.5	130.4	175.4	156.9	138.2	208.1	127.1	154.2	193.2	202.5	147.5	186.1
<b>An. Av</b>	<b>209.0</b>	<b>218.8</b>	<b>127.9</b>	<b>172.8</b>	<b>153.8</b>	<b>137.8</b>	<b>202.1</b>	<b>126.7</b>	<b>149.5</b>	<b>193.2</b>	<b>199.7</b>	<b>146.4</b>	<b>181.5</b>	
<b>2012</b>	Jan-12	219.2	223.9	129.1	180.7	158.8	142.0	208.2	127.2	156.2	200.1	204.2	149.5	188.5
	Feb-12	221.1	227.6	129.7	180.4	158.7	142.5	211.9	127.2	160.0	200.1	204.2	154.5	190.1
	Mar-12	223.3	234.4	129.1	178.6	160.5	142.7	213.6	127.2	158.5	200.1	204.3	154.2	190.7
	Apr-12	224.4	236.3	129.0	178.5	161.7	143.0	215.9	127.2	161.1	200.1	204.9	154.2	191.4
	May-12	224.4	237.9	128.4	178.4	160.2	142.7	218.7	127.2	162.5	200.1	207.7	152.4	191.7
	Jun-12	223.0	237.5	128.7	178.5	160.8	142.8	218.2	127.2	162.5	200.1	207.9	153.5	191.3
	Jul-12	226.3	238.2	128.9	185.7	161.8	142.8	215.9	126.6	164.2	200.1	208.8	151.4	193.2
	Aug-12	226.4	239.8	129.8	186.5	162.7	142.9	216.5	126.6	164.5	200.1	210.4	152.5	193.7



**Table 4: Namibia CPI annual trends over the last four months**

		Index (Dec.2001=100)				May-12	Jun-12	Jul-12	Aug-12
		May-12	Jun-12	Jul-12	Aug-12				
1	FOOD AND NON-ALCOHOLIC BEVERAGES	224.4	223.0	226.3	226.4	7.9	6.7	7.8	7.3
2	ALCOHOLIC BEVERAGES AND TOBACCO	237.9	237.5	238.2	239.8	8.5	7.7	7.9	8.2
03.	CLOTHING AND FOOTWEAR	128.4	128.7	128.9	129.8	1.6	1.4	1.6	1.0
04.	HOUSING, WATER, ELECTRICITY, GAS AND OTHER FUELS	178.4	178.5	185.7	186.5	4.3	4.4	7.0	7.4
05.	FURNISHINGS, HOUSEHOLD EQUIPMENT AND ROUTINE MAINTENANCE OF THE HOUSE	160.2	160.8	161.8	162.7	4.8	4.2	4.5	5.3
06.	HEALTH	142.7	142.8	142.8	142.9	3.3	3.4	3.5	3.6
07.	TRANSPORT	218.7	218.2	215.9	216.5	8.0	7.9	6.2	6.0
08.	COMMUNICATIONS	127.2	127.2	126.6	126.6	0.5	0.4	0.0	0.0
09.	RECREATION AND CULTURE	162.5	162.5	164.2	164.5	8.9	9.3	9.7	9.4
10.	EDUCATION	200.1	200.1	200.1	200.1	3.6	3.6	3.6	3.6
11.	HOTELS, CAFES AND RESTAURANTS	207.7	207.9	208.8	210.4	4.6	4.6	4.5	5.6
12.	MISCELLANEOUS GOODS AND SERVICES	152.4	153.5	151.4	152.5	3.7	4.4	2.7	3.5
	<b>ALL-ITEMS INDEX</b>	<b>191.7</b>	<b>191.3</b>	<b>193.2</b>	<b>193.7</b>	<b>6.0</b>	<b>5.6</b>	<b>6.0</b>	<b>5.8</b>
	EDUCATION RELATED EXPENSES	178.2	178.0	179.0	180.8	2.5	3.0	3.4	4.1
	GOODS	197.1	196.1	196.9	198.3	5.3	5.1	5.2	5.3
	SERVICES	183.2	183.7	187.2	186.3	7.2	6.5	7.2	6.7

**Chart 5: NCPI August 2012: Changes by major groups ( Dec. 2001=100)**



**Table 5: Namibia CPI; Goods and Services (December 2001=100)**

		Services			Goods		
Period	Index	monthly inflation rate	Annual inflation rate	Index	monthly inflation rate	Annual inflation rate	
<b>2009</b>							
	Apr	154.5	-0.3	9.2	167.6	0.6	9.5
	May	154.2	-0.2	8.6	170.6	1.8	10.2
	June	154.5	0.3	8.5	171.5	0.5	9.4
	July	156.4	1.2	6.0	172.5	0.6	8.3
	Aug	156.9	0.3	6.1	174.6	1.2	8.5
	Sept	156.4	-0.3	5.6	174.8	0.1	7.9
	Oct	156.4	0.0	4.2	175.8	0.6	8.7
	Nov	157.0	0.4	4.0	175.9	0.1	8.2
	Dec	157.2	0.1	4.0	175.5	-0.3	8.7
	<b>An. Av</b>	<b>156.0</b>	<b>0.3</b>	<b>7.4</b>	<b>171.4</b>	<b>0.7</b>	<b>9.6</b>
<b>2010</b>							
	Jan	162.2	3.2	5.6	176.4	0.5	6.7
	Feb	162.2	0.0	4.8	177.4	0.6	7.1
	Mar	163.5	0.8	5.5	177.0	-0.3	6.2
	Apr	164.0	0.3	6.1	176.6	-0.2	5.4
	May	165.3	0.8	7.2	176.1	-0.3	3.2
	June	165.7	0.2	7.2	175.9	-0.1	2.6
	July	167.7	1.2	7.2	177.9	1.1	3.2
	Aug	167.5	-0.1	6.8	177.6	-0.2	1.7
	Sept	167.6	0.0	7.2	177.8	0.1	1.7
	Oct	167.8	0.1	7.3	177.4	-0.2	0.9
	Nov	168.3	0.3	7.2	178.0	0.3	1.2
	Dec	167.6	-0.4	6.6	177.4	-0.3	1.1
	<b>An. Av</b>	<b>165.8</b>	<b>0.5</b>	<b>6.6</b>	<b>177.1</b>	<b>0.1</b>	<b>3.4</b>
<b>2011</b>							
	Jan	172.2	2.7	6.1	179.7	1.3	1.9
	Feb	172.7	0.3	6.4	179.6	-0.1	1.2
	Mar	172.6	-0.03	5.6	181.9	1.3	2.8
	Apr	172.7	0.1	5.3	184.6	1.5	4.5
	May	170.9	-1.1	3.4	187.1	1.4	6.3
	June	172.5	1.0	4.1	186.6	-0.3	6.1
	July	174.5	1.2	4.1	187.2	0.3	5.2
	Aug	174.7	0.1	4.3	188.3	0.6	6.1
	Sep	175.3	0.4	4.6	187.8	-0.3	5.7
	Oct	176.0	0.4	4.9	189.7	1.0	6.9
	Nov	176.1	0.03	4.6	190.1	0.2	6.8
	Dec	176.6	0.30	5.4	192.1	1.1	8.3
	<b>An. Av</b>	<b>173.9</b>	<b>0.4</b>	<b>4.9</b>	<b>186.2</b>	<b>0.7</b>	<b>5.1</b>
<b>2012</b>							
	Jan	179.1	1.4	4.0	194.5	1.2	8.2
	Feb	179.5	0.3	4.0	196.7	1.1	9.5
	Mar	180.3	0.4	4.4	197.2	0.3	8.4
	Apr	181.1	0.5	4.9	197.9	0.4	7.2
	May	183.2	1.1	7.2	197.1	-0.4	5.3
	June	183.7	0.3	6.5	196.1	-0.5	5.1
	July	187.2	1.9	7.2	196.9	0.4	5.2
	Aug	186.3	-0.5	6.7	198.3	0.7	5.3



**P.O.Box 2133**  
**FGI House, Post Street Mall**  
**Windhoek, Namibia**  
**Tel: +264 61 431 3200**  
**Fax: +264 61 431 3253 | +264 61 431 3240**  
**Website: [www.nsa.org.na](http://www.nsa.org.na)**