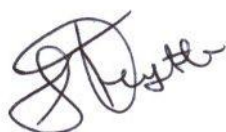


PREFACE

The Namibia CPI includes all Namibian private households living in urban and rural areas and is compiled by comparing the prices of the goods and services with the prices prevailing in December 2001. It measures the rate at which the prices of consumer goods and services are changing from month to month. The prices are collected from more than 650 retail outlets in 8 localities. The index is calculated as a weighted arithmetic average of the proportionate changes in the prices of goods and services in the basket, with the weights representing the expenditure shares on each commodity in the 1993-94 Namibia Household Income and Expenditure Survey. The index is published about 15 days after the end of the reference month to which it relates.

The Consumer Price Index (CPI) is widely used as a measure of the rate of inflation as experienced by households in their role as consumers. The CPI has become a key statistics for purposes of economic policy-making, especially the conduct of monetary policy. It is often specified in legislation and in a wide variety of private contracts for the purposes of adjusting payments (such as wages, rents, interest and social security benefits) for the effects of inflation. It can therefore have substantial and wide-ranging financial implications for governments and businesses, as well as for households.



John Steytler

STATISTICIAN - GENERAL

SUMMARY COMMENTS

The monthly inflation rate for July 2012 was estimated at 1.0 percent, compared to the June 2012 rate of -0.2 percent. This increase resulted from monthly significant increases recorded in the following categories: Housing, Water, Electricity, Gas and Other Fuels (4.0 percent), Food and Non- Alcoholic Beverages (1.5 percent), Recreation and Culture (1.0 percent), Furnishings, Household Equipment and Routine Maintenance (0.6 percent).

The All Items Index for July increased by 1.9 percentage points from 191.3 in June 2012 to 193.2.

The index for Food and Non Alcoholic Beverages for July 2012 increased to 226.3.0 a monthly increase of 3.3 percentage points from 223.0 recorded in June 2012. This increase was due to increases recorded in the subgroups of Milk, cheese and eggs (5.8 percent), Vegetables including potatoes and other tubers (3.3 percent), Oils and fats (2.3 percent), Food (1.5 percent), Mineral waters, soft drinks and juices(0.9 percent), Food products n.e.c (0.8 percent), Non-alcoholic beverages (0.7 percent), Meat and Fish (0.5 percent) respectively and Bread and cereals (0.3 percent).

The annual inflation rate for July 2012 stood at 6.0 percent compared to 4.8 percent recorded during the same period last year. The annual inflation rates for the major groups comprising the NCPI were Food and Non-Alcoholic Beverages (7.8 percent), Housing, Water, Electricity, Gas and Other Fuels (7.0 percent) and Transport (6.2 percent).

The detailed results of the NCPI for the month of July 2012 as displayed in the Tables 1-5 and in Charts 1-5 respectively.

Table 1: Namibia CPI: All-Items Index on base Dec.2001, monthly and annual percentage changes

	Index	Monthly percentage changes	Annual percentage changes
2009			
Jan-09	160.8	2.2	11.6
Feb-09	161.4	0.4	11.6
Mar-09	162.6	0.7	11.2
Apr-09	163.5	0.6	10.0
May-09	164.2	0.4	9.6
Jun-09	164.9	0.4	9.1
Jul-09	166.3	0.8	7.5
Aug-09	167.7	0.9	7.6
Sep-09	167.6	-0.1	7.1
Oct-09	168.3	0.4	7.1
Nov-09	168.6	0.2	6.7
Dec-09	168.4	-0.1	7.0
An. Av	165.4	0.6	8.8
2010			
Jan-10	170.9	1.5	6.3
Feb-10	171.6	0.4	6.3
Mar-10	171.8	0.1	5.6
Apr-10	171.7	-0.1	5.0
May-10	171.9	0.2	4.7
Jun-10	172.0	0.1	4.3
Jul-10	174.0	1.2	4.6
Aug-10	173.7	-0.2	3.6
Sep-10	173.8	0.1	3.7
Oct-10	173.7	-0.1	3.2
Nov-10	174.3	0.3	3.4
Dec-10	173.6	-0.4	3.1
An. Av	172.7	0.3	4.5
2011			
Jan-11	176.8	1.8	3.5
Feb-11	176.9	0.1	3.1
Mar-11	178.3	0.8	3.8
Apr-11	180.0	0.9	4.8
May-11	180.8	0.5	5.2
Jun-11	181.2	0.2	5.4
Jul-11	182.3	0.6	4.8
Aug-11	183.1	0.4	5.4
Sep-11	183.0	-0.04	5.3
Oct-11	184.4	0.8	6.1
Nov-11	184.7	0.2	6.0
Dec-11	186.1	0.8	7.2
An. Av	181.5	0.6	5.0
2012			
Jan-12	188.5	1.3	6.6
Feb-12	190.1	0.8	7.4
Mar-12	190.7	0.3	6.9
Apr-12	191.4	0.4	6.4
May-12	191.7	0.2	6.0
Jun-12	191.3	-0.2	5.6
Jul-12	193.2	1.0	6.0

Chart 1: IICPI, Percentage changes from Dec. 2001

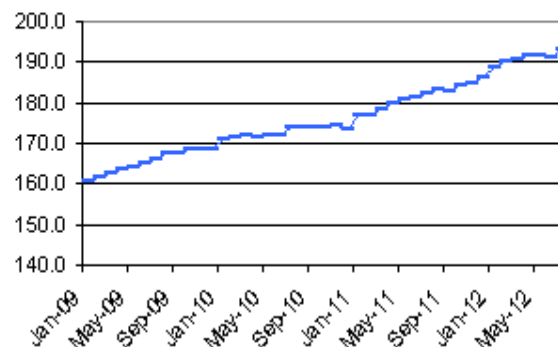


Chart 2: IICPI; Month-to-month percentage changes

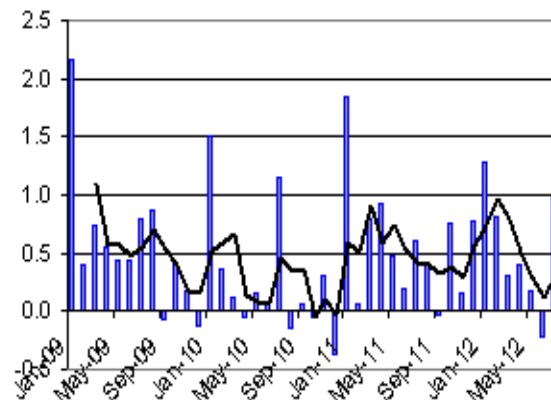


Chart 3: IICPI; Annual percentage changes

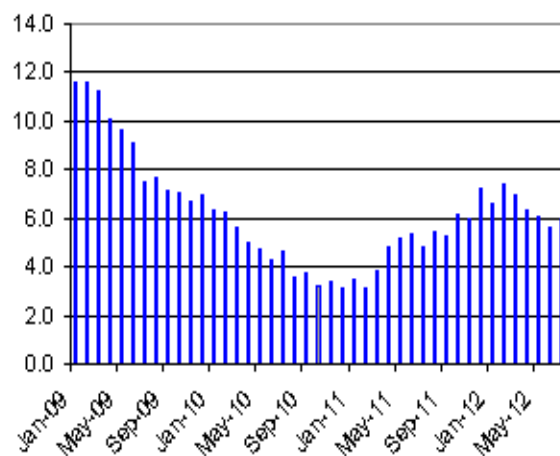


Table 2: Namibia CPI for July 2012 by main groups and sub-groups (Dec.2001=100)

	July- 2012 Index	Percentage changes		
		Monthly	Annual	Since last December
00. ALL ITEMS	193.2	1.0	6.0	3.8
01. FOOD AND NON-ALCOHOLIC BEVERAGES	226.3	1.5	7.8	4.0
Food	228.2	1.5	7.8	3.8
Bread and cereals	222.2	0.3	5.1	1.3
Meat	237.7	0.5	11.7	5.5
Fish	197.3	0.5	-1.1	3.0
Milk, cheese and eggs	226.1	5.8	4.3	4.6
Oils and fats	214.7	2.3	11.9	9.7
Fruit	226.9	-2.0	4.4	-7.0
Vegetables including potatoes and other tubers	249.7	3.3	6.2	6.2
Sugar, jam, honey, syrups, chocolate and confectionery	205.4	-0.4	11.5	6.8
Food products n.e.c.	197.3	0.8	6.2	2.6
Non-alcoholic beverages	203.9	0.7	7.8	5.3
Coffee, tea and cocoa	186.4	-0.3	8.3	4.5
Mineral waters, soft drinks and juices	209.9	0.9	7.9	5.4
0.2 ALCOHOLIC BEVERAGES AND TOBACCO	238.2	0.3	7.9	6.6
Alcoholic beverages	226.8	0.4	11.5	8.9
Tobacco	249.6	0.2	2.9	3.4
03. CLOTHING AND FOOTWEAR	128.9	0.1	1.6	-1.2
Clothing	123.7	-0.6	3.0	-0.9
Clothing materials	145.8	0.2	-1.2	-0.9
Ready-made clothing	123.0	-0.7	3.9	-0.6
Men's clothing	138.0	-1.2	0.2	-2.7
Women's clothing	106.5	-0.5	10.6	3.9
Children's clothing	121.8	-0.1	3.6	-1.0
Boys' clothing	129.7	0.5	1.7	-3.1
Girls' clothing	112.5	-0.4	0.7	-3.2
Infants' clothing	151.1	-0.4	18.8	11.3
Other articles of clothing and clothing accessories	116.9	0.0	-1.3	-2.0
Dry cleaning, repair and hire of clothing	195.1	0.0	6.4	6.4
Footwear	138.7	1.5	-1.1	-2.2
Adult footwear	136.4	2.3	-3.3	-3.2
Children's footwear	140.7	-0.2	3.9	-0.7
Repair of footwear	173.2	0.0	7.8	7.8
04. HOUSING, WATER, ELECTRICITY, GAS AND OTHER FUELS	185.7	4.0	7.0	5.8
Rental payments for dwelling (both owners and renters)	161.3	0.0	2.7	2.7
Regular maintenance and repair of dwelling	222.9	0.2	6.8	1.5
Water supply, sewerage service and refuse collection	219.7	5.6	5.6	5.6
Electricity gas and other fuels	242.7	10.8	14.5	11.0
05. FURNISHINGS, HOUSEHOLD EQUIPMENT AND ROUTINE MAINTENANCE	161.8	0.6	4.5	3.1
Furniture, furnishings, decorations, carpets, floor coverings,inl.repairs	125.7	-0.7	-1.2	-1.5
Furniture and furnishings	125.9	-0.7	-1.5	-2.2
Carpets and other floor coverings	109.9	-0.7	2.1	0.9
Repair of furnishings and floor coverings	224.2	0.0	8.1	8.1
Household textiles	155.6	-0.5	5.2	2.5
Heating and cooking appliances, refrigerators, washing machines and similar major household appliances, including	147.0	2.2	3.9	1.5
Glassware, tableware and household utensils	165.1	2.2	2.1	1.9
Tools and equipment for house and garden	168.3	0.9	5.4	3.7

	Goods and services for routine household maintenance	184.7	-0.3	6.8	4.4
06.	HEALTH	142.8	0.0	3.5	3.3
	Medical products, appliances and equipment	147.0	0.0	2.5	1.6
	Outpatient Services, medical, dental and paramedical	169.2	0.0	7.8	8.0
	Hospital services	106.6	0.0	0.0	0.0
07.	TRANSPORT	215.9	-1.1	6.2	3.7
	Purchase of vehicles	202.3	0.0	4.5	2.9
	Operation of personal transport equipment	252.8	-4.3	8.2	3.3
	Public transportation services	222.0	2.4	10.9	11.9
08.	COMMUNICATIONS	126.6	-0.5	0.0	-0.4
09.	RECREATION AND CULTURE	164.2	1.0	9.7	6.5
	Audio-visual, photographic and data processing equip.inc.repairs	128.2	0.2	14.0	17.9
	Other major durables for recreation and culture	130.8	0.2	5.5	1.5
	Other recreational items and equipment; flowers, gardens and pets	164.3	0.1	3.0	1.4
	Recreation and cultural services	173.3	0.0	11.9	6.3
	Newspapers, books and stationery	172.9	1.2	3.4	3.4
	Package holidays	227.6	4.6	34.7	4.2
10.	EDUCATION	200.1	0.0	3.6	3.6
	Pre-primary and primary education (ages 2 to 6 years)	195.5	0.0	4.6	4.6
	Secondary education (ages 7 to 17 years)	182.4	0.0	3.1	3.1
	Tertiary education	264.3	0.0	1.0	1.0
11.	HOTELS, CAFES AND RESTAURANTS	208.8	0.4	4.5	3.1
	Catering	223.3	0.9	4.4	2.6
	Accommodation services	170.3	-0.3	4.1	4.1
12.	MISCELLANEOUS GOODS AND SERVICES	151.4	-1.4	2.7	2.7
	Personal care	180.3	-1.6	1.2	1.5
	Personal effects n.e.c.	137.1	-1.2	4.4	4.0
	Insurance	144.7	-1.5	6.6	6.6
	Financial services n.e.c.	164.9	0.0	0.0	0.0
	Other services n.e.c.	167.0	0.0	-2.2	-2.2

Chart 4: NCPI for major groups

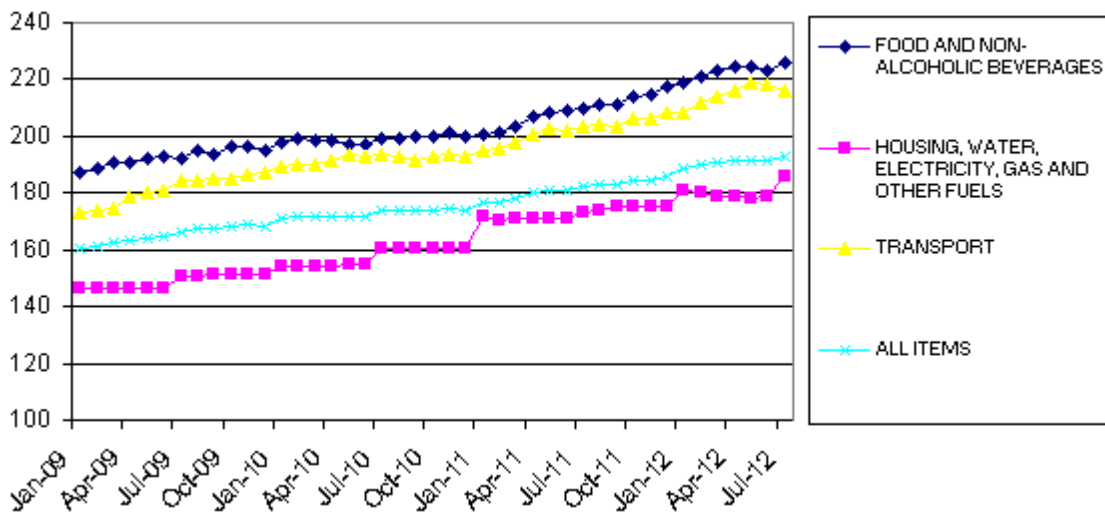


Table 3: Namibia CPI by main groups (Dec.2001=100)

	FOOD AND NON-ALCOHOLIC BEVERAGES	ALCOHOLIC BEVERAGES AND TOBACCO	CLOTHING AND FOOTWEAR	HOUSING, WATER, ELECTRICITY, GAS AND OTHER FUELS	FURNISHINGS, HOUSEHOLD EQUIPMENT AND ROUTINE MAINTENANCE OF THE HOUSE	HEALTH	TRANSPORT	COMMUNICATIONS	RECREATION AND CULTURE	EDUCATION	HOTELS, CAFES AND RESTAURANTS	MISCELLANEOUS GOODS AND SERVICES	ALL ITEMS
Weights	29.63	3.26	5.13	20.59	5.61	1.51	14.79	0.90	2.50	7.36	1.62	7.11	100.0
Year Month													
2009													
Jan-09	187.5	174.8	115.8	146.7	144.8	120.5	173.0	123.0	136.5	174.6	171.6	132.8	160.8
Feb-09	188.9	175.1	115.9	146.6	145.4	122.2	173.7	123.1	136.6	174.6	171.6	133.3	161.4
Mar-09	190.6	183.6	119.4	146.6	147.6	123.5	174.5	123.1	137.0	174.6	172.5	133.3	162.6
Apr-09	190.9	185.3	119.3	146.5	147.2	124.5	178.7	123.1	137.7	174.6	172.6	134.4	163.5
May-09	191.8	185.6	119.8	146.6	147.9	124.8	180.0	123.1	136.6	174.6	174.3	134.7	164.2
Jun-09	192.5	186.4	121.9	146.8	149.1	125.0	181.0	123.1	138.1	174.6	174.9	135.4	164.9
Jul-09	192.0	187.9	124.3	150.7	148.7	125.7	184.5	123.1	140.8	174.6	179.0	135.9	166.3
Aug-09	195.0	191.9	125.0	150.7	148.7	125.2	184.3	123.1	142.4	174.6	178.5	135.9	167.7
Sep-09	193.9	192.1	126.5	151.1	149.4	125.6	185.5	123.2	141.0	174.6	180.9	136.3	167.6
Oct-09	196.5	193.8	126.7	151.2	149.6	125.7	184.9	124.7	141.1	174.6	181.1	137.0	168.3
Nov-09	196.3	194.6	128.5	151.3	150.4	125.7	186.4	124.6	142.1	174.6	181.0	136.5	168.6
Dec-09	195.3	195.6	128.5	151.3	148.9	125.8	187.4	124.6	143.1	174.6	181.3	136.6	168.4
An. Av	192.6	187.2	122.6	148.8	148.2	124.5	181.2	123.5	139.4	174.6	176.6	135.2	165.4
2010													
Jan-10	197.5	196.3	128.1	154.2	150.6	128.9	189.2	124.9	141.7	183.8	185.6	139.6	170.9
Feb-10	199.0	197.0	127.5	154.3	150.6	128.8	189.9	124.6	142.5	183.8	186.0	140.1	171.6
Mar-10	198.5	203.4	127.3	154.3	151.3	128.9	189.7	124.9	142.6	183.8	186.7	139.6	171.8
Apr-10	198.3	204.1	125.7	153.9	150.1	129.4	191.6	124.9	143.2	183.8	189.7	140.4	171.7
May-10	197.1	206.4	127.6	154.5	150.8	129.5	193.6	124.9	144.4	183.8	189.5	139.7	171.9
Jun-10	197.4	207.0	127.8	154.6	151.8	130.5	193.0	125.0	145.0	183.8	190.2	139.6	172.0
Jul-10	199.4	208.8	128.0	160.5	151.6	130.8	193.8	124.9	146.5	183.8	191.7	140.1	174.0
Aug-10	199.2	208.4	127.1	160.5	150.9	131.1	192.9	124.9	144.6	183.8	193.8	141.4	173.7
Sep-10	200.1	208.9	125.6	160.5	151.4	131.7	191.3	124.9	144.1	183.8	193.9	142.2	173.8
Oct-10	199.9	209.0	125.0	160.6	150.7	131.7	192.7	125.4	144.7	183.8	193.8	142.3	173.7
Nov-10	201.1	209.9	125.2	160.5	149.7	131.7	193.6	125.6	144.9	183.8	194.3	142.4	174.3
Dec-10	199.6	209.8	124.9	160.6	150.3	131.6	193.1	125.9	144.0	183.8	195.4	142.4	173.6
An. Av	198.9	205.8	126.7	157.4	150.8	130.4	192.0	125.1	144.0	183.8	190.9	140.8	172.7
2011													
Jan-11	200.9	209.8	125.9	171.5	151.4	136.6	194.7	126.4	144.5	193.2	196.4	144.9	176.8
Feb-11	201.3	209.4	127.0	170.6	151.2	136.7	196.0	126.4	147.0	193.2	195.6	144.3	176.9
Mar-11	203.6	215.3	126.3	170.8	151.3	137.4	197.8	126.5	147.1	193.2	200.6	144.6	178.3
Apr-11	206.8	218.8	126.9	170.7	152.2	137.6	200.9	126.5	148.4	193.2	200.3	144.2	180.0
May-11	208.0	219.3	126.4	171.0	152.8	138.2	202.4	126.5	149.2	193.2	198.6	147.0	180.8
Jun-11	208.9	220.4	126.9	171.0	154.3	138.0	202.2	126.7	148.7	193.2	198.8	147.1	181.2
Jul-11	209.9	220.8	126.9	173.4	154.8	138.0	203.3	126.6	149.7	193.2	199.9	147.5	182.3
Aug-11	211.0	221.6	128.4	173.7	154.5	137.9	204.3	126.6	150.4	193.2	199.4	147.3	183.1
Sep-11	211.4	221.7	128.6	175.0	154.4	138.5	203.1	126.7	150.7	193.2	200.5	147.2	183.0
Oct-11	213.9	221.6	130.4	175.3	155.6	138.2	205.9	127.1	152.1	193.2	201.4	147.4	184.4
Nov-11	214.6	223.2	131.0	175.5	155.6	138.2	206.3	127.1	151.7	193.2	202.1	147.6	184.7
Dec-11	217.7	223.5	130.4	175.4	156.9	138.2	208.1	127.1	154.2	193.2	202.5	147.5	186.1
An. Av	209.0	218.8	127.9	172.8	153.8	137.8	202.1	126.7	149.5	193.2	199.7	146.4	181.5
2012													
Jan-12	219.2	223.9	129.1	180.7	158.8	142.0	208.2	127.2	156.2	200.1	204.2	149.5	188.5
Feb-12	221.1	227.6	129.7	180.4	158.7	142.5	211.9	127.2	160.0	200.1	204.2	154.5	190.1
Mar-12	223.3	234.4	129.1	178.6	160.5	142.7	213.6	127.2	158.5	200.1	204.3	154.2	190.7
Apr-12	193.2	-13.5	-6.6	178.5	161.7	143.0	215.9	127.2	161.1	200.1	204.9	154.2	191.4
May-12	224.4	237.9	128.4	178.4	160.2	142.7	218.7	127.2	162.5	200.1	207.7	152.4	191.7
Jun-12	223.0	237.5	128.7	178.5	160.8	142.8	218.2	127.2	162.5	200.1	207.9	153.5	191.3
Jul-12	226.3	238.2	128.9	185.7	161.8	142.8	215.9	126.6	164.2	200.1	208.8	151.4	193.2

Table 4: Namibia CPI annual trends over the last four months (Dec 2001=100)

		Apr-12	May-12	Jun-12	Jul-12	Apr-12	May-12	Jun-12	Jul-12
01	FOOD AND NON-ALCOHOLIC BEVERAGES	224.4	224.4	223.0	226.3	8.5	7.9	6.7	7.8
02	ALCOHOLIC BEVERAGES AND TOBACCO	236.3	237.9	237.5	238.2	8.0	8.5	7.7	7.9
03.	CLOTHING AND FOOTWEAR	129.0	128.4	128.7	128.9	1.6	1.6	1.4	1.6
04.	HOUSING, WATER, ELECTRICITY, GAS AND OTHER FUELS	178.5	178.4	178.5	185.7	4.5	4.3	4.4	7.0
05.	FURNISHINGS, HOUSEHOLD EQUIPMENT AND ROUTINE MAINTENANCE OF THE HOUSE	161.7	160.2	160.8	161.8	6.2	4.8	4.2	4.5
06.	HEALTH	143.0	142.7	142.8	142.8	3.9	3.3	3.4	3.5
07.	TRANSPORT	215.9	218.7	218.2	215.9	7.5	8.0	7.9	6.2
08.	COMMUNICATIONS	127.2	127.2	127.2	126.6	0.5	0.5	0.4	0.0
09.	RECREATION AND CULTURE	161.1	162.5	162.5	164.2	8.6	8.9	9.3	9.7
10.	EDUCATION	200.1	200.1	200.1	200.1	3.6	3.6	3.6	3.6
11.	HOTELS, CAFES AND RESTAURANTS	204.9	207.7	207.9	208.8	2.3	4.6	4.6	4.5
12.	MISCELLANEOUS GOODS AND SERVICES	154.2	152.4	153.5	151.4	6.9	3.7	4.4	2.7
	ALL-ITEMS INDEX	191.4	191.7	191.3	193.2	6.4	6.0	5.6	6.0
	EDUCATION RELATED EXPENSES	177.3	178.2	178.0	179.0	2.0	2.5	3.0	3.4
	GOODS	197.9	197.1	196.1	196.9	7.2	5.3	5.1	5.2
	SERVICES	181.1	183.2	183.7	187.2	4.9	7.2	6.5	7.2

Chart 5: NCPI July 2012: Changes by major groups (Dec. 2001=100)

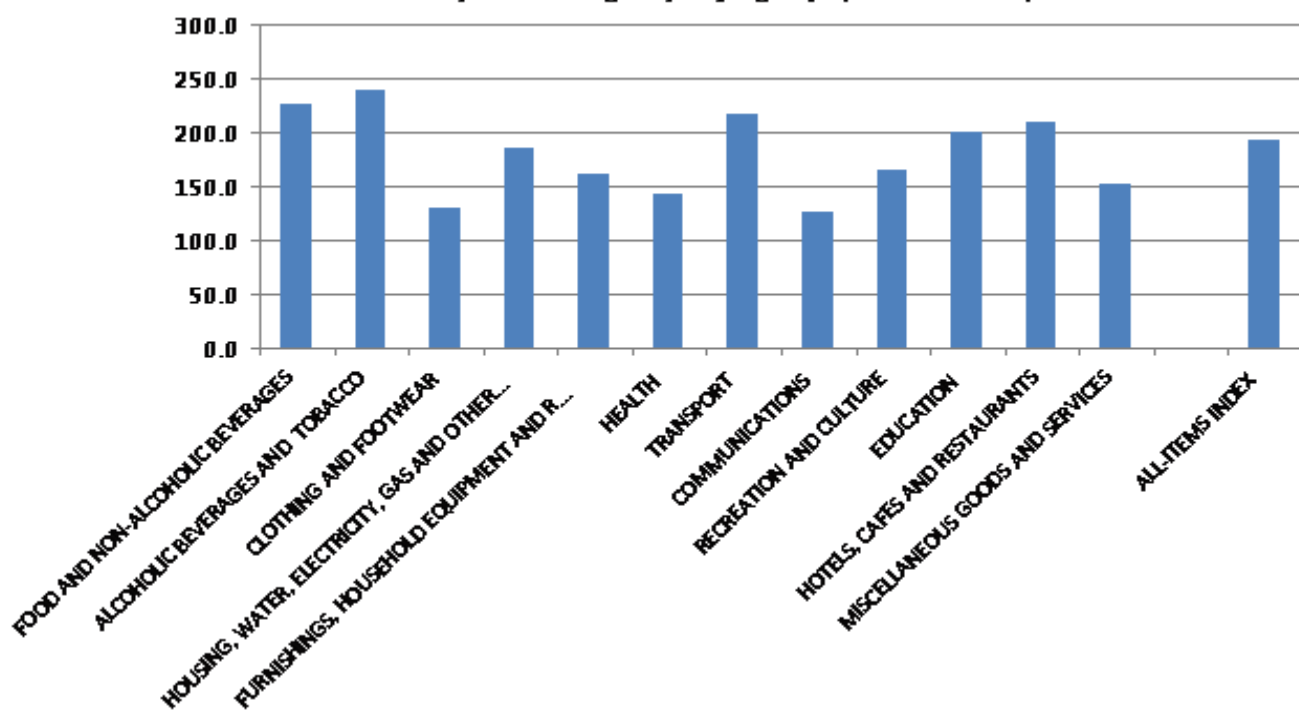


Table 5: Namibia CPI; Goods and Services (December 2001=100)

		Services			Goods		
Period	Index	monthly inflation rate	Annual inflation rate	Index	monthly inflation rate	Annual inflation rate	
2009							
	Mar	155.0	0.2	10.4	166.6	0.6	11.2
	Apr	154.5	-0.3	9.2	167.6	0.6	9.5
	May	154.2	-0.2	8.6	170.6	1.8	10.2
	June	154.5	0.3	8.5	171.5	0.5	9.4
	July	156.4	1.2	6.0	172.5	0.6	8.3
	Aug	156.9	0.3	6.1	174.6	1.2	8.5
	Sept	156.4	-0.3	5.6	174.8	0.1	7.9
	Oct	156.4	0.0	4.2	175.8	0.6	8.7
	Nov	157.0	0.4	4.0	175.9	0.1	8.2
	Dec	157.2	0.1	4.0	175.5	-0.3	8.7
	An. Av	156.0	0.3	7.4	171.4	0.7	9.6
2010							
	Jan	162.2	3.2	5.6	176.4	0.5	6.7
	Feb	162.2	0.0	4.8	177.4	0.6	7.1
	Mar	163.5	0.8	5.5	177.0	-0.3	6.2
	Apr	164.0	0.3	6.1	176.6	-0.2	5.4
	May	165.3	0.8	7.2	176.1	-0.3	3.2
	June	165.7	0.2	7.2	175.9	-0.1	2.6
	July	167.7	1.2	7.2	177.9	1.1	3.2
	Aug	167.5	-0.1	6.8	177.6	-0.2	1.7
	Sept	167.6	0.0	7.2	177.8	0.1	1.7
	Oct	167.8	0.1	7.3	177.4	-0.2	0.9
	Nov	168.3	0.3	7.2	178.0	0.3	1.2
	Dec	167.6	-0.4	6.6	177.4	-0.3	1.1
	An. Av	165.8	0.5	6.6	177.1	0.1	3.4
2011							
	Jan	172.2	2.7	6.1	179.7	1.3	1.9
	Feb	172.7	0.3	6.4	179.6	-0.1	1.2
	Mar	172.6	-0.03	5.6	181.9	1.3	2.8
	Apr	172.7	0.1	5.3	184.6	1.5	4.5
	May	170.9	-1.1	3.4	187.1	1.4	6.3
	June	172.5	1.0	4.1	186.6	-0.3	6.1
	July	174.5	1.2	4.1	187.2	0.3	5.2
	Aug	174.7	0.1	4.3	188.3	0.6	6.1
	Sep	175.3	0.4	4.6	187.8	-0.3	5.7
	Oct	176.0	0.4	4.9	189.7	1.0	6.9
	Nov	176.1	0.03	4.6	190.1	0.2	6.8
	Dec	176.6	0.30	5.4	192.1	1.1	8.3
	An. Av	173.9	0.4	4.9	186.2	0.7	5.1
2012							
	Jan	179.1	1.4	4.0	194.5	1.2	8.2
	Feb	179.5	0.3	4.0	196.7	1.1	9.5
	Mar	180.3	0.4	4.4	197.2	0.3	8.4
	Apr	181.1	0.5	4.9	197.9	0.4	7.2
	May	183.2	1.1	7.2	197.1	-0.4	5.3
	June	183.7	0.3	6.5	196.1	-0.5	5.1
	July	187.2	1.9	7.2	196.9	0.4	5.2