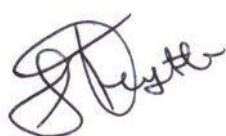


PREFACE

The Namibia CPI includes all Namibian private households living in urban and rural areas and is compiled by comparing the prices of the goods and services with the prices prevailing in December 2001. It measures the rate at which the prices of consumer goods and services are changing from month to month. The prices are collected from more than 650 retail outlets in 8 localities. The index is calculated as a weighted arithmetic average of the proportionate changes in the prices of goods and services in the basket, with the weights representing the expenditure shares on each commodity in the 1993-94 Namibia Household Income and Expenditure Survey. The index is published about 15 days after the end of the reference month to which it relates.

The Consumer Price Index (CPI) is widely used as a measure of the rate of inflation as experienced by households in their role as consumers. The CPI has become a key statistics for purposes of economic policy-making, especially the conduct of monetary policy. It is often specified in legislation and in a wide variety of private contracts for the purposes of adjusting payments (such as wages, rents, interest and social security benefits) for the effects of inflation. It can therefore have substantial and wide-ranging financial implications for governments and businesses, as well as for households.



John Steytler

STATISTICIAN - GENERAL

SUMMARY COMMENTS

The monthly inflation rate for June 2012 was estimated at -0.2 percent, compared to the May 2012 rate of 0.2 percent. This decrease resulted from monthly decreases recorded in the following categories: Food and Non- Alcoholic Beverages (-0.6 percent), Alcoholic Beverages and Tobacco (-0.2 percent) and Transport (-0.2 percent).

The All Items Index for June decreased by 0.4 percentage points from 191.7 in May 2012 to 191.3.

The index for Food and Non Alcoholic Beverages for June 2012 decreased to 223.0 a monthly decrease of 1.4 percentage points from 224.4 recorded in May 2012. This decrease was due to decreases recorded in the subgroups of Fruits (-2.0 percent), Milk, cheese and eggs (-1.8 percent), Bread and cereals (-1.2 percent), Food (-0.7 percent) and Vegetables including potatoes and other tubers (-0.1 percent).

The annual inflation rate for June 2012 stood at 5.6 percent compared to 5.4 percent recorded during the same period last year. The annual inflation rates for the major groups comprising the NCPI were Food and Non-Alcoholic Beverages (6.7 percent), Housing, Water, Electricity, Gas and Other Fuels (4.4 percent) and Transport (7.9 percent).

The detailed results of the NCPI for the month of June 2012 as displayed in the Tables 1-5 and in Charts 1-5 respectively.

Table 1: Namibia CPI: All-Items Index on base Dec.2001, monthly and annual percentage changes

		Index	Monthly percentage changes	Annual percentage changes
2009	Jan-09	160.8	2.2	11.6
	Feb-09	161.4	0.4	11.6
	Mar-09	162.6	0.7	11.2
	Apr-09	163.5	0.6	10.0
	May-09	164.2	0.4	9.6
	Jun-09	164.9	0.4	9.1
	Jul-09	166.3	0.8	7.5
	Aug-09	167.7	0.9	7.6
	Sep-09	167.6	-0.1	7.1
	Oct-09	168.3	0.4	7.1
	Nov-09	168.6	0.2	6.7
	Dec-09	168.4	-0.1	7.0
	An. Av	165.4	0.6	8.8
2010	Jan-10	170.9	1.5	6.3
	Feb-10	171.6	0.4	6.3
	Mar-10	171.8	0.1	5.6
	Apr-10	171.7	-0.1	5.0
	May-10	171.9	0.2	4.7
	Jun-10	172.0	0.1	4.3
	Jul-10	174.0	1.2	4.6
	Aug-10	173.7	-0.2	3.6
	Sep-10	173.8	0.1	3.7
	Oct-10	173.7	-0.1	3.2
	Nov-10	174.3	0.3	3.4
	Dec-10	173.6	-0.4	3.1
	An. Av	172.7	0.3	4.5
2011	Jan-11	176.8	1.8	3.5
	Feb-11	176.9	0.1	3.1
	Mar-11	178.3	0.8	3.8
	Apr-11	180.0	0.9	4.8
	May-11	180.8	0.5	5.2
	Jun-11	181.2	0.2	5.4
	Jul-11	182.3	0.6	4.8
	Aug-11	183.1	0.4	5.4
	Sep-11	183.0	-0.04	5.3
	Oct-11	184.4	0.8	6.1
	Nov-11	184.7	0.2	6.0
	Dec-11	186.1	0.8	7.2
	An. Av	181.5	0.6	5.0
2012	Jan-12	188.5	1.3	6.6
	Feb-12	190.1	0.8	7.4
	Mar-12	190.7	0.3	6.9
	Apr-12	191.4	0.4	6.4
	May-12	191.7	0.2	6.0
	Jun-12	191.3	-0.2	5.6

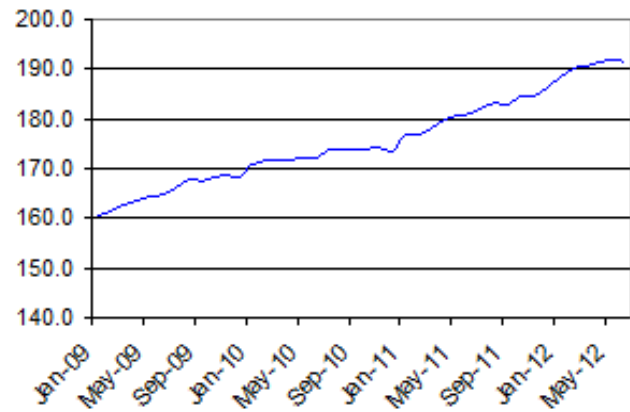
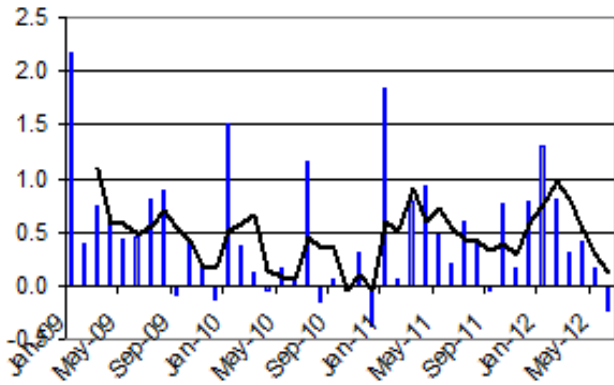
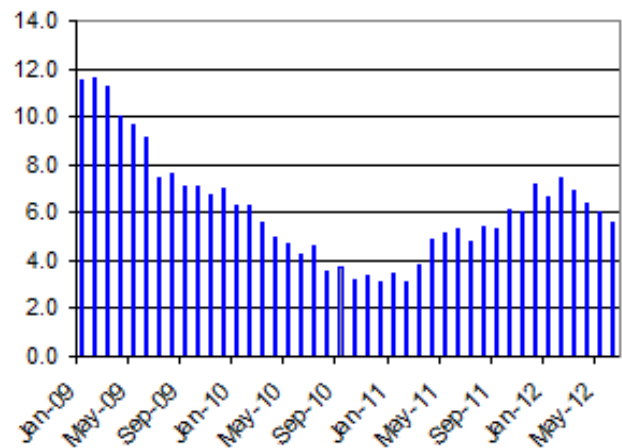
Chart 1: NCPI, Percentage changes from Dec. 2001**Chart 2: NCPI; Month-to-month percentage changes****Chart 3: NCPI; Annual percentage changes**

Table 2: Namibia CPI for June 2012 by main groups and sub-groups (Dec.2001=100)					
		June 2012 Index	Percentage changes		
			Monthly	Annual	Since last December
00.	ALL ITEMS	191.3	-0.2	5.6	2.8
01.	FOOD AND NON-ALCOHOLIC BEVERAGES	223.0	-0.6	6.7	2.4
	Food	224.7	-0.7	6.5	2.3
	Bread and cereals	221.4	-1.2	5.7	1.0
	Meat	236.7	0.1	12.4	5.1
	Fish	196.4	0.5	-4.1	2.5
	Milk, cheese and eggs	213.7	-1.8	-0.5	-1.1
	Oils and fats	209.9	-0.2	8.6	7.3
	Fruit	231.4	-2.0	3.7	-5.1
	Vegetables including potatoes and other tubers	241.7	-0.1	1.0	2.8
	Sugar, jam, honey, syrups, chocolate and confectionery	206.3	1.7	12.2	7.3
	Food products n.e.c.	195.8	0.3	5.6	1.8
	Non-alcoholic beverages	202.6	0.7	8.9	4.6
	Coffee, tea and cocoa	186.9	0.0	9.5	4.8
	Mineral waters, soft drinks and juices	208.1	1.0	8.8	4.5
0.2	ALCOHOLIC BEVERAGES AND TOBACCO	237.5	-0.2	7.7	6.3
	Alcoholic beverages	225.8	-0.1	11.2	8.5
	Tobacco	249.2	-0.6	2.7	3.3
03.	CLOTHING AND FOOTWEAR	128.7	0.2	1.4	-1.3
	Clothing	124.4	0.3	3.6	-0.3
	Clothing materials	145.4	0.0	-1.4	-1.1
	Ready-made clothing	123.8	0.4	4.5	0.0
	Men's clothing	139.7	1.1	1.3	-1.5
	Women's clothing	107.0	0.1	11.3	4.4
	Children's clothing	121.9	-0.3	3.6	-0.9
	Boys' clothing	129.0	0.2	-0.6	-3.6
	Girls' clothing	113.0	-0.8	2.7	-2.8
	Infants' clothing	151.8	0.0	19.9	11.8
	Other articles of clothing and clothing accessories	116.9	-0.4	-0.9	-2.0
	Dry cleaning, repair and hire of clothing	195.1	0.0	7.4	6.4
	Footwear	136.6	0.0	-2.9	-3.7
	Adult footwear	133.3	0.2	-5.1	-5.4
	Children's footwear	141.0	-1.0	1.8	-0.5
	Repair of footwear	173.2	7.3	10.2	7.8
04.	HOUSING, WATER, ELECTRICITY, GAS AND OTHER FUELS	178.5	0.1	4.4	1.8
	Rental payments for dwelling (both owners and renters)	161.3	0.0	2.7	2.7
	Regular maintenance and repair of dwelling	222.3	0.3	6.6	1.2
	Water supply, sewerage service and refuse collection	208.0	0.0	10.8	0.0
	Electricity gas and other fuels	219.0	0.3	5.0	0.1
05.	FURNISHINGS, HOUSEHOLD EQUIPMENT AND ROUTINE MAINTENANCE	160.8	0.4	4.2	2.4
	Furniture, furnishings, decorations, carpets, floor coverings, incl. repairs	126.6	0.0	-0.1	-0.8
	Furniture and furnishings	126.8	0.0	-0.4	-1.5
	Carpets and other floor coverings	110.7	0.6	2.8	1.7
	Repair of furnishings and floor coverings	224.2	0.0	8.1	8.1
	Household textiles	156.4	0.7	3.8	3.0

	Heating and cooking appliances, refrigerators, washing machines and similar major household appliances, including	143.9	0.0	1.0	-0.7
	Glassware, tableware and household utensils	161.6	-0.5	0.1	-0.2
	Tools and equipment for house and garden	166.7	0.2	5.5	2.8
	Goods and services for routine household maintenance	185.2	1.2	8.0	4.7
06.	HEALTH	142.8	0.0	3.4	3.3
	Medical products, appliances and equipment	147.1	0.1	2.4	1.6
	Outpatient Services, medical, dental and paramedical	169.2	0.0	7.8	8.0
	Hospital services	106.6	0.0	0.0	0.0
07.	TRANSPORT	218.2	-0.2	7.9	4.8
	Purchase of vehicles	202.2	0.1	6.1	2.9
	Operation of personal transport equipment	264.1	-1.1	12.0	7.9
	Public transportation services	216.9	0.2	8.4	9.3
08.	COMMUNICATIONS	127.2	0.0	0.4	0.1
09.	RECREATION AND CULTURE	162.5	0.0	9.3	5.4
	Audio-visual, photographic and data processing equip.inc.repairs	128.0	-0.2	15.5	17.7
	Other major durables for recreation and culture	130.5	0.0	5.5	1.3
	Other recreational items and equipment; flowers, gardens and pets	164.0	0.2	2.1	1.2
	Recreation and cultural services	173.3	0.1	11.9	6.2
	Newspapers, books and stationery	170.9	0.5	2.3	2.1
	Package holidays	217.6	-0.8	34.6	-0.4
10.	EDUCATION	200.1	0.0	3.6	3.6
	Pre-primary and primary education (ages 2 to 6 years)	195.5	0.0	4.6	4.6
	Secondary education (ages 7 to 17 years)	182.4	0.0	3.1	3.1
	Tertiary education	264.3	0.0	1.0	1.0
11.	HOTELS, CAFES AND RESTAURANTS	207.9	0.1	4.6	2.7
	Catering	221.4	1.0	3.7	1.7
	Accommodation services	170.9	-1.0	5.6	4.5
12.	MISCELLANEOUS GOODS AND SERVICES	153.5	0.7	4.4	4.1
	Personal care	183.2	2.1	4.0	3.1
	Personal effects n.e.c.	138.7	2.1	6.4	5.2
	Insurance	146.9	0.0	8.2	8.2
	Financial services n.e.c.	164.9	0.0	0.0	0.0
	Other services n.e.c.	167.0	-0.1	-2.2	-2.2

Chart 4: NCPI for major groups

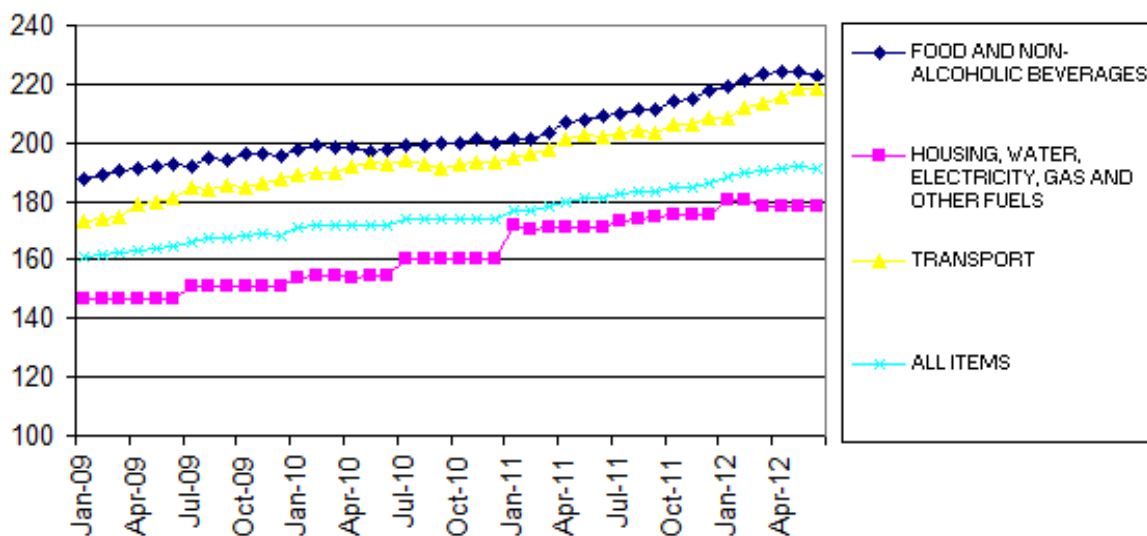


Table 3: Namibia CPI by main groups (Dec.2001=100)

	FOOD AND NON- ALCOHOLIC BEVERAGES	ALCOHOLIC BEVERAGES AND TOBACCO	CLOTHING AND FOOT WEAR	HOUSING, WATER, ELECTRICITY, GAS AND OTHER FUELS	FURNISHING S, HOUSE HOLD EQUIPMENT AND ROUTINE MAINTENANCE OF THE HOUSE	HEALTH	TRANSPORT	COMMUNICATIONS	RECREATION AND CULTURE	EDUCATION	HOTELS, CAFES AND RESTAURANTS	MISCELLANEOUS GOODS AND SERVICES	ALL ITEMS	
Year	Weights	29.63	3.26	5.13	20.59	5.61	1.51	14.79	0.90	2.50	7.36	1.62	7.11	100.0
Month														
2009	Dec-01	100.0	100.0	100.0	100.0	100.0	100.0	100.0	100.0	100.0	100.0	100.0	100.0	100.0
	Jan-09	187.5	174.8	115.8	146.7	144.8	120.5	173.0	123.0	136.5	174.6	171.6	132.8	160.8
	Feb-09	188.9	175.1	115.9	146.6	145.4	122.2	173.7	123.1	136.6	174.6	171.6	133.3	161.4
	Mar-09	190.6	183.6	119.4	146.6	147.6	123.5	174.5	123.1	137.0	174.6	172.5	133.3	162.6
	Apr-09	190.9	185.3	119.3	146.5	147.2	124.5	178.7	123.1	137.7	174.6	172.6	134.4	163.5
	May-09	191.8	185.6	119.8	146.6	147.9	124.8	180.0	123.1	136.6	174.6	174.3	134.7	164.2
	Jun-09	192.5	186.4	121.9	146.8	149.1	125.0	181.0	123.1	138.1	174.6	174.9	135.4	164.9
	Jul-09	192.0	187.9	124.3	150.7	148.7	125.7	184.5	123.1	140.8	174.6	179.0	135.9	166.3
	Aug-09	195.0	191.9	125.0	150.7	148.7	125.2	184.3	123.1	142.4	174.6	178.5	135.9	167.7
	Sep-09	193.9	192.1	126.5	151.1	149.4	125.6	185.5	123.2	141.0	174.6	180.9	136.3	167.6
	Oct-09	196.5	193.8	126.7	151.2	149.6	125.7	184.9	124.7	141.1	174.6	181.1	137.0	168.3
	Nov-09	196.3	194.6	128.5	151.3	150.4	125.7	186.4	124.6	142.1	174.6	181.0	136.5	168.6
	Dec-09	195.3	195.6	128.5	151.3	148.9	125.8	187.4	124.6	143.1	174.6	181.3	136.6	168.4
	An. Av	192.6	187.2	122.6	148.8	148.2	124.5	181.2	123.5	139.4	174.6	176.6	135.2	165.4
2010	Jan-10	197.5	196.3	128.1	154.2	150.6	128.9	189.2	124.9	141.7	183.8	185.6	139.6	170.9
	Feb-10	199.0	197.0	127.5	154.3	150.6	128.8	189.9	124.6	142.5	183.8	186.0	140.1	171.6
	Mar-10	198.5	203.4	127.3	154.3	151.3	128.9	189.7	124.9	142.6	183.8	186.7	139.6	171.8
	Apr-10	198.3	204.1	125.7	153.9	150.1	129.4	191.6	124.9	143.2	183.8	189.7	140.4	171.7
	May-10	197.1	206.4	127.6	154.5	150.8	129.5	193.6	124.9	144.4	183.8	189.5	139.7	171.9
	Jun-10	197.4	207.0	127.8	154.6	151.8	130.5	193.0	125.0	145.0	183.8	190.2	139.6	172.0
	Jul-10	199.4	208.8	128.0	160.5	151.6	130.8	193.8	124.9	146.5	183.8	191.7	140.1	174.0
	Aug-10	199.2	208.4	127.1	160.5	150.9	131.1	192.9	124.9	144.6	183.8	193.8	141.4	173.7
	Sep-10	200.1	208.9	125.6	160.5	151.4	131.7	191.3	124.9	144.1	183.8	193.9	142.2	173.8
	Oct-10	199.9	209.0	125.0	160.6	150.7	131.7	192.7	125.4	144.7	183.8	193.8	142.3	173.7
	Nov-10	201.1	209.9	125.2	160.5	149.7	131.7	193.6	125.6	144.9	183.8	194.3	142.4	174.3
	Dec-10	199.6	209.8	124.9	160.6	150.3	131.6	193.1	125.9	144.0	183.8	195.4	142.4	173.6
	An. Av	198.9	205.8	126.7	157.4	150.8	130.4	192.0	125.1	144.0	183.8	190.9	140.8	172.7
2011	Jan-11	200.9	209.8	125.9	171.5	151.4	136.6	194.7	126.4	144.5	193.2	196.4	144.9	176.8
	Feb-11	201.3	209.4	127.0	170.6	151.2	136.7	196.0	126.4	147.0	193.2	195.6	144.3	176.9
	Mar-11	203.6	215.3	126.3	170.8	151.3	137.4	197.8	126.5	147.1	193.2	200.6	144.6	178.3
	Apr-11	206.8	218.8	126.9	170.7	152.2	137.6	200.9	126.5	148.4	193.2	200.3	144.2	180.0
	May-11	208.0	219.3	126.4	171.0	152.8	138.2	202.4	126.5	149.2	193.2	198.6	147.0	180.8
	Jun-11	208.9	220.4	126.9	171.0	154.3	138.0	202.2	126.7	148.7	193.2	198.8	147.1	181.2
	Jul-11	209.9	220.8	126.9	173.4	154.8	138.0	203.3	126.6	149.7	193.2	199.9	147.5	182.3
	Aug-11	211.0	221.6	128.4	173.7	154.5	137.9	204.3	126.6	150.4	193.2	199.4	147.3	183.1
	Sep-11	211.4	221.7	128.6	175.0	154.4	138.5	203.1	126.7	150.7	193.2	200.5	147.2	183.0
	Oct-11	213.9	221.6	130.4	175.3	155.6	138.2	205.9	127.1	152.1	193.2	201.4	147.4	184.4
	Nov-11	214.6	223.2	131.0	175.5	155.6	138.2	206.3	127.1	151.7	193.2	202.1	147.6	184.7
	Dec-11	217.7	223.5	130.4	175.4	156.9	138.2	208.1	127.1	154.2	193.2	202.5	147.5	186.1
	An. Av	209.0	218.8	127.9	172.8	153.8	137.8	202.1	126.7	149.5	193.2	199.7	146.4	181.5
2012	Jan-12	219.2	223.9	129.1	180.7	158.8	142.0	208.2	127.2	156.2	200.1	204.2	149.5	188.5
	Feb-12	221.1	227.6	129.7	180.4	158.7	142.5	211.9	127.2	160.0	200.1	204.2	154.5	190.1
	Mar-12	223.3	234.4	129.1	178.6	160.5	142.7	213.6	127.2	158.5	200.1	204.3	154.2	190.7
	Apr-12	224.4	236.3	129.0	178.5	161.7	143.0	215.9	127.2	161.1	200.1	204.9	154.2	191.4
	May-12	224.4	237.9	128.4	178.4	160.2	142.7	218.7	127.2	162.5	200.1	207.7	152.4	191.7
	Jun-12	223.0	237.5	128.7	178.5	160.8	142.8	218.2	127.2	162.5	200.1	207.9	153.5	191.3

		Index (Dec.2001=100)				Mar-12	Apr-12	May-12	Jun-12
		Mar-12	Apr-12	May-12	Jun-12				
1	FOOD AND NON-ALCOHOLIC BEVERAGES	223.3	224.4	224.4	223.0	9.7	8.5	7.9	6.7
2	ALCOHOLIC BEVERAGES AND TOBACCO	234.4	236.3	237.9	237.5	8.9	8.0	8.5	7.7
03.	CLOTHING AND FOOTWEAR	129.1	129.0	128.4	128.7	2.2	1.6	1.6	1.4
04.	HOUSING, WATER, ELECTRICITY, GAS AND OTHER FUELS	178.6	178.5	178.4	178.5	4.6	4.5	4.3	4.4
05.	FURNISHINGS, HOUSEHOLD EQUIPMENT AND ROUTINE MAINTENANCE OF THE HOUSE	160.5	161.7	160.2	160.8	6.1	6.2	4.8	4.2
06.	HEALTH	142.7	143.0	142.7	142.8	3.8	3.9	3.3	3.4
07.	TRANSPORT	213.6	215.9	218.7	218.2	8.0	7.5	8.0	7.9
08.	COMMUNICATIONS	127.2	127.2	127.2	127.2	0.5	0.5	0.5	0.4
09.	RECREATION AND CULTURE	158.5	161.1	162.5	162.5	7.7	8.6	8.9	9.3
10.	EDUCATION	200.1	200.1	200.1	200.1	3.6	3.6	3.6	3.6
11.	HOTELS, CAFES AND RESTAURANTS	204.3	204.9	207.7	207.9	1.8	2.3	4.6	4.6
12.	MISCELLANEOUS GOODS AND SERVICES	154.2	154.2	152.4	153.5	6.6	6.9	3.7	4.4
	ALL-ITEMS INDEX	190.7	191.4	191.7	191.3	6.9	6.4	6.0	5.6
	EDUCATION RELATED EXPENSES	177.0	177.3	178.2	178.0	2.2	2.0	2.5	3.0
	GOODS	197.2	197.9	197.1	196.1	8.4	7.2	5.3	5.1
	SERVICES	180.3	181.1	183.2	183.7	4.4	4.9	7.2	6.5

Chart 5: NCPI June 2012: Changes by major groups (Dec. 2001 = 100)

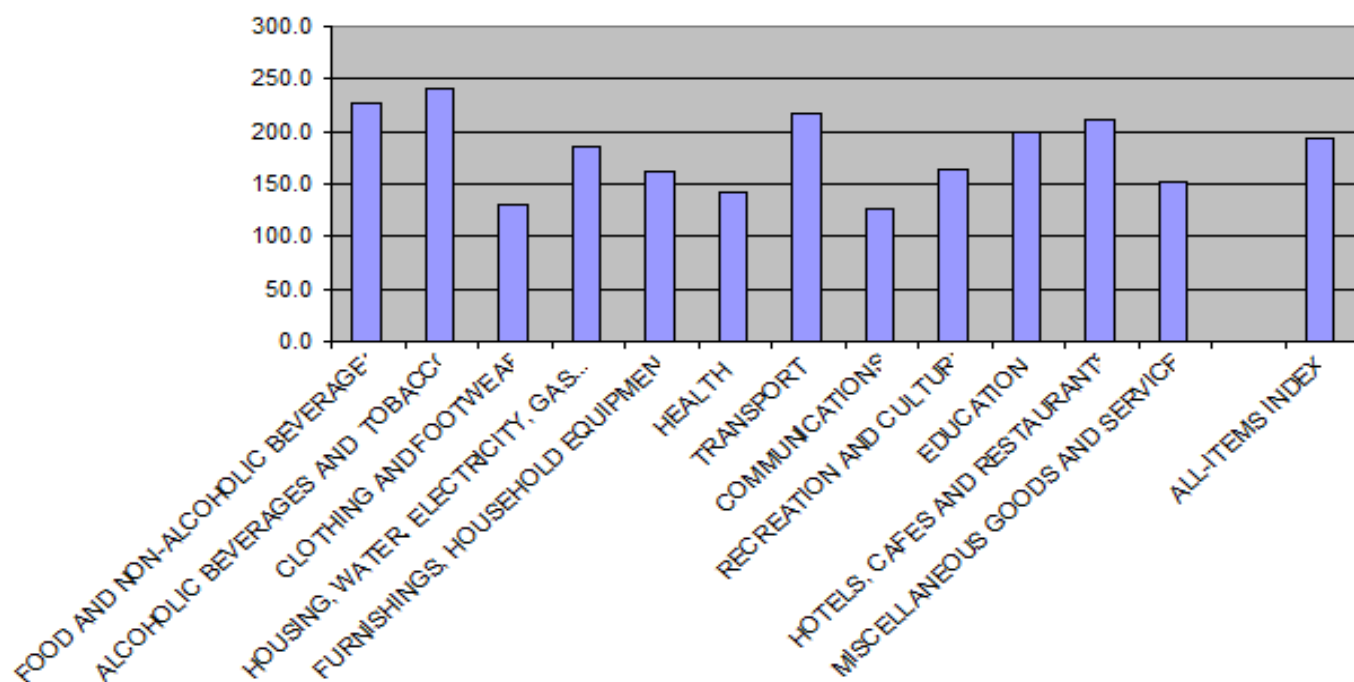


Table 5: Namibia CPI; Goods and Services (December 2001=100)

		Services			Goods		
Period	Index	monthly inflation rate	Annual inflation rate	Index	monthly inflation rate	Annual inflation rate	
2009							
	Apr	154.5	-0.3	9.2	167.6	0.6	9.5
	May	154.2	-0.2	8.6	170.6	1.8	10.2
	June	154.5	0.3	8.5	171.5	0.5	9.4
	July	156.4	1.2	6.0	172.5	0.6	8.3
	Aug	156.9	0.3	6.1	174.6	1.2	8.5
	Sept	156.4	-0.3	5.6	174.8	0.1	7.9
	Oct	156.4	0.0	4.2	175.8	0.6	8.7
	Nov	157.0	0.4	4.0	175.9	0.1	8.2
	Dec	157.2	0.1	4.0	175.5	-0.3	8.7
	An. Av	156.0	0.3	7.4	171.4	0.7	9.6
2010							
	Jan	162.2	3.2	5.6	176.4	0.5	6.7
	Feb	162.2	0.0	4.8	177.4	0.6	7.1
	Mar	163.5	0.8	5.5	177.0	-0.3	6.2
	Apr	164.0	0.3	6.1	176.6	-0.2	5.4
	May	165.3	0.8	7.2	176.1	-0.3	3.2
	June	165.7	0.2	7.2	175.9	-0.1	2.6
	July	167.7	1.2	7.2	177.9	1.1	3.2
	Aug	167.5	-0.1	6.8	177.6	-0.2	1.7
	Sept	167.6	0.0	7.2	177.8	0.1	1.7
	Oct	167.8	0.1	7.3	177.4	-0.2	0.9
	Nov	168.3	0.3	7.2	178.0	0.3	1.2
	Dec	167.6	-0.4	6.6	177.4	-0.3	1.1
	An. Av	165.8	0.5	6.6	177.1	0.1	3.4
2011							
	Jan	172.2	2.7	6.1	179.7	1.3	1.9
	Feb	172.7	0.3	6.4	179.6	-0.1	1.2
	Mar	172.6	-0.03	5.6	181.9	1.3	2.8
	Apr	172.7	0.1	5.3	184.6	1.5	4.5
	May	170.9	-1.1	3.4	187.1	1.4	6.3
	June	172.5	1.0	4.1	186.6	-0.3	6.1
	July	174.5	1.2	4.1	187.2	0.3	5.2
	Aug	174.7	0.1	4.3	188.3	0.6	6.1
	Sep	175.3	0.4	4.6	187.8	-0.3	5.7
	Oct	176.0	0.4	4.9	189.7	1.0	6.9
	Nov	176.1	0.03	4.6	190.1	0.2	6.8
	Dec	176.6	0.30	5.4	192.1	1.1	8.3
	An. Av	173.9	0.4	4.9	186.2	0.7	5.1
2012							
	Jan	179.1	1.4	4.0	194.5	1.2	8.2
	Feb	179.5	0.3	4.0	196.7	1.1	9.5
	Mar	180.3	0.4	4.4	197.2	0.3	8.4
	Apr	181.1	0.5	4.9	197.9	0.4	7.2
	May	183.2	1.1	7.2	197.1	-0.4	5.3
	June	183.7	0.3	6.5	196.1	-0.5	5.1