

NAMIBIA CONSUMER PRICE INDEX BULLETIN

NOVEMBER 2012



Est. by Statistics Act 9 of 2011

**Namibia Statistics
Agency**

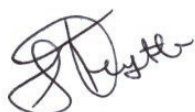
PREFACE

The Namibia Consumer Price Index (CPI) includes all Namibian private households living in urban and rural areas and is compiled by comparing the prices of the goods and services with the prices prevailing in December 2001. It measures the rate at which the prices of consumer goods and services are changing from time to time. The prices are collected from more than 650 retail outlets in 8 localities.

The index is calculated as a weighted arithmetic average of the proportionate changes in the prices of goods and services in the basket, with the weights representing the expenditure shares on each commodity in the 1993-94 Namibia Household Income and Expenditure Survey. The index is published about 15 days after the end of the reference month to which it relates.

The CPI is widely used as a measure of the rate of inflation as experienced by households in their role as consumers. The CPI has become a key statistic for purposes of economic policy-making, especially the conduct of monetary policy.

It is often specified in legislation and in a wide variety of private contracts for the purposes of adjusting payments (such as wages, rents, interest and social security benefits) for the effects of inflation. It can, therefore, have substantial and wide-ranging financial implications for governments and businesses, as well as for households.



.....
John Steytler
STATISTICIAN - GENERAL

SUMMARY COMMENTS

The All Items Index for November 2012 increased by 1.2 percentage points up from 197.5 in October 2012 to 198.7. This resulted into a monthly inflation rate of 0.6 percent, compared to the October 2012 rate of 1.1 percent a difference of 0.5 percentage points. This increase resulted from monthly increases recorded in all the components comprising the Namibia CPI with exception of the components “Health and Education”.

The index for “Food and Non Alcoholic Beverages” for November 2012 increased to 238.2 a monthly increase of about 2.5 percentage points from 235.6 recorded in October 2012. This increase was due to increases recorded in all the subgroups comprising the Food and Non Alcoholic group with the exception of milk, cheese and eggs which registered a decline of 0.2 percent.

The annual inflation rate for November 2012 stood at 7.6 percent compared to 6.0 percent recorded during the same period last year. The annual inflation rates for the major groups comprising the NCPI were Food and Non-Alcoholic Beverages (11 percent), Housing, Water, Electricity, Gas and Other Fuels (7.4 percent) and Transport (6.7 percent).

The detailed results of the NCPI for the month of November 2012 as displayed in the Tables 1-5 and in Charts 1-5 respectively.

Table 1: Namibia CPI: All-Items Index on base Dec.2001, monthly and annual percentage changes

		Index	Monthly percentage changes	Annual percentage changes	
2009	Jul-09	166.3	0.8	7.5	<p>Chart 1: NCPI; Percentage changes from Dec 2001</p>
	Aug-09	167.7	0.9	7.6	
	Sep-09	167.6	-0.1	7.1	
	Oct-09	168.3	0.4	7.1	
	Nov-09	168.6	0.2	6.7	
	Dec-09	168.4	-0.1	7.0	
	An. Av	165.4	0.6	8.8	
2010	Jan-10	170.9	1.5	6.3	
	Feb-10	171.6	0.4	6.3	
	Mar-10	171.8	0.1	5.6	
	Apr-10	171.7	-0.1	5.0	
	May-10	171.9	0.2	4.7	
	Jun-10	172.0	0.1	4.3	
	Jul-10	174.0	1.2	4.6	
	Aug-10	173.7	-0.2	3.6	
	Sep-10	173.8	0.1	3.7	
	Oct-10	173.7	-0.1	3.2	
	Nov-10	174.3	0.3	3.4	
	Dec-10	173.6	-0.4	3.1	
	An. Av	172.7	0.3	4.5	
2011	Jan-11	176.8	1.8	3.5	<p>Chart 2: NCPI; Month-to-month percentage changes</p>
	Feb-11	176.9	0.1	3.1	
	Mar-11	178.3	0.8	3.8	
	Apr-11	180.0	0.9	4.8	
	May-11	180.8	0.5	5.2	
	Jun-11	181.2	0.2	5.4	
	Jul-11	182.3	0.6	4.8	
	Aug-11	183.1	0.4	5.4	
	Sep-11	183.0	-0.04	5.3	
	Oct-11	184.4	0.8	6.1	
	Nov-11	184.7	0.2	6.0	
	Dec-11	186.1	0.8	7.2	
	An. Av	181.5	0.6	5.0	
2012	Jan-12	188.5	1.3	6.6	<p>Chart 3: NCPI; Annual percentage changes</p>
	Feb-12	190.1	0.8	7.4	
	Mar-12	190.7	0.3	6.9	
	Apr-12	191.4	0.4	6.4	
	May-12	191.7	0.2	6.0	
	Jun-12	191.3	-0.2	5.6	
	Jul-12	193.2	1.0	6.0	
	Aug-12	193.7	0.3	5.8	
	Sep-12	195.3	0.8	6.7	
	Oct-12	197.5	1.1	7.1	
	Nov-12	198.7	0.6	7.6	

Table 2: Namibia CPI for November 2012 by main groups and sub-groups (Dec.2001=100)

	Nov - 2012 Index	Percentage changes		
		Monthly	Annual	Since last December
00. ALL ITEMS	198.7	0.6	7.6	6.7
01. FOOD AND NON-ALCOHOLIC BEVERAGES	238.2	1.1	11.0	9.4
Food	240.5	1.0	11.2	9.5
Bread and cereals	238.6	0.4	12.9	8.8
Meat	252.3	1.3	13.2	12.0
Fish	210.7	2.5	10.8	9.9
Milk, cheese and eggs	222.9	-0.2	4.6	3.1
Oils and fats	219.2	0.6	11.8	12.0
Fruit	254.0	4.6	6.6	4.1
Vegetables including potatoes and other tubers	267.0	3.9	12.2	13.6
Sugar, jam, honey, syrups, chocolate and confectionery	209.4	0.3	8.9	8.9
Food products n.e.c.	200.3	0.4	5.4	4.2
Non-alcoholic beverages	210.6	1.6	8.1	8.8
Coffee, tea and cocoa	186.9	1.0	4.9	4.9
Mineral waters, soft drinks and juices	218.4	1.4	8.8	9.7
0.2 ALCOHOLIC BEVERAGES AND TOBACCO	243.3	0.1	9.0	8.9
Alcoholic beverages	231.0	0.6	11.5	10.9
Tobacco	255.3	-0.4	5.6	5.8
03. CLOTHING AND FOOTWEAR	132.3	0.1	1.1	1.5
Clothing	126.8	-0.1	2.4	1.6
Clothing materials	144.7	-0.5	-1.6	-1.6
Ready-made clothing	126.3	-0.1	3.0	2.1
Men's clothing	142.5	0.2	2.0	0.5
Women's clothing	109.5	-0.1	6.7	6.8
Children's clothing	123.9	-0.7	1.3	0.7
Boys' clothing	132.9	0.6	-0.3	-0.7
Girls' clothing	114.1	-1.3	-0.9	-1.9
Infants' clothing	153.8	-1.9	13.3	13.3
Other articles of clothing and clothing accessories	122.9	1.2	3.3	3.0
Dry cleaning, repair and hire of clothing	195.7	0.0	6.8	6.8
Footwear	142.6	0.4	-1.9	0.6
Adult footwear	142.1	0.5	-2.4	0.8
Children's footwear	140.7	0.1	-1.6	-0.8
Repair of footwear	170.3	0.0	6.0	6.0
04. HOUSING, WATER, ELECTRICITY, GAS AND OTHER FUELS	188.4	0.1	7.4	7.4
Rental payments for dwelling (both owners and renters)	163.3	0.0	3.9	3.9
Regular maintenance and repair of dwelling	228.7	0.1	2.8	4.1
Water supply, sewerage service and refuse collection	226.6	0.0	8.9	8.9
Electricity gas and other fuels	245.8	0.2	12.5	12.4
05. FURNISHINGS, HOUSEHOLD EQUIPMENT AND ROUTINE MAINTENANCE	166.7	0.9	7.2	6.2
Furniture, furnishings, decorations, carpets, floor coverings, inl. repairs	126.7	-1.8	0.8	-0.8
Furniture and furnishings	126.2	-2.0	-0.1	-2.0
Carpets and other floor coverings	111.4	0.5	1.8	2.3
Repair of furnishings and floor coverings	246.0	0.0	18.5	18.5
Household textiles	157.0	1.6	3.5	3.4
Heating and cooking appliances, refrigerators, washing machines and similar major household appliances, including	150.9	-1.4	4.4	4.2
Glassware, tableware and household utensils	167.9	1.3	3.7	3.7

Tools and equipment for house and garden	168.1	0.8	3.4	3.6
Goods and services for routine household maintenance	193.8	1.4	11.0	9.6
06. HEALTH	143.5	0.0	3.8	3.8
Medical products, appliances and equipment	148.8	0.0	2.7	2.8
Outpatient Services, medical, dental and paramedical	169.2	0.0	8.0	8.0
Hospital services	106.6	0.0	0.0	0.0
07. TRANSPORT	220.2	0.8	6.7	5.8
Purchase of vehicles	200.4	0.3	2.8	2.0
Operation of personal transport equipment	272.4	1.7	12.6	11.3
Public transportation services	235.0	1.7	18.3	18.4
08. COMMUNICATIONS	129.8	0.4	2.1	2.1
09. RECREATION AND CULTURE	165.5	0.6	9.1	7.3
Audio-visual, photographic and data processing equip.inc.repairs	122.7	0.1	12.2	12.9
Other major durables for recreation and culture	141.9	0.0	13.4	10.2
Other recreational items and equipment; flowers, gardens and pets	169.7	1.9	4.7	4.7
Recreation and cultural services	173.3	0.0	11.9	6.3
Newspapers, books and stationery	178.2	0.1	6.9	6.5
Package holidays	230.3	0.1	11.5	5.4
10. EDUCATION	200.1	0.0	3.6	3.6
Pre-primary and primary education (ages 2 to 6 years)	195.5	0.0	4.6	4.6
Secondary education (ages 7 to 17 years)	182.4	0.0	3.1	3.1
Tertiary education	264.3	0.0	1.0	1.0
11. HOTELS, CAFES AND RESTAURANTS	214.8	0.3	6.3	6.1
Catering	233.9	0.3	7.7	7.4
Accommodation services	170.2	0.3	4.2	4.0
12. MISCELLANEOUS GOODS AND SERVICES	152.8	0.1	3.6	3.6
Personal care	185.3	0.5	4.0	4.3
Personal effects n.e.c.	140.2	0.0	6.8	6.4
Insurance	144.7	0.0	6.6	6.6
Financial services n.e.c.	164.9	0.0	0.0	0.0
Other services n.e.c.	167.0	0.0	-2.2	-2.2

Chart 4: NCPI for major groups

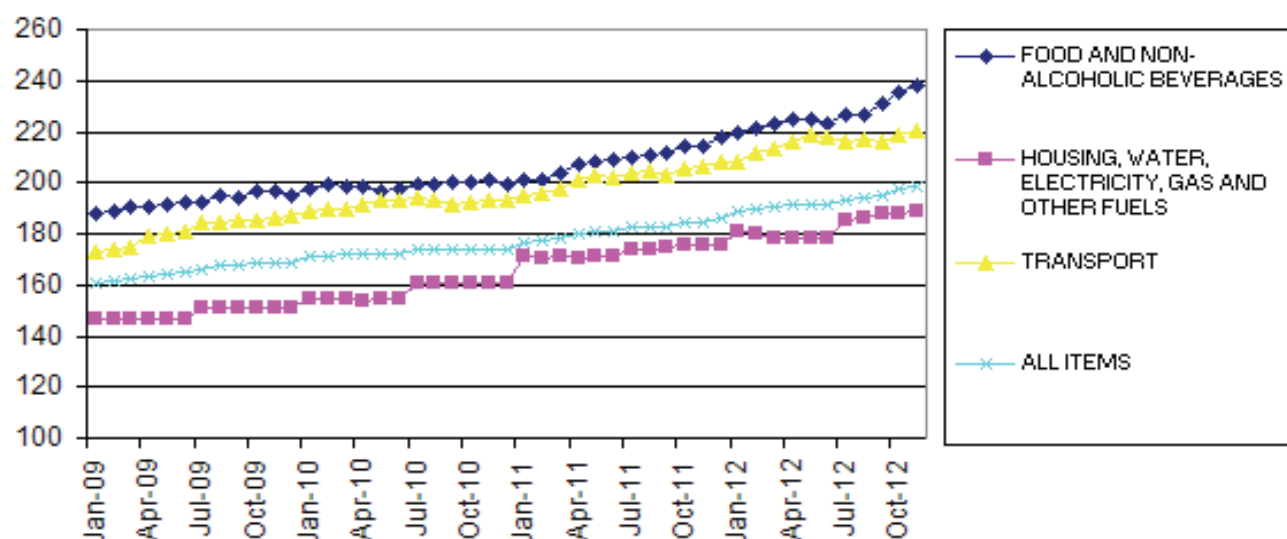


Table 3: Namibia CPI by main groups (Dec.2001=100)

	FOOD AND NON-ALCOHOLIC BEVERAGES	ALCOHOLIC BEVERAGES AND TOBACCO	CLOTHING AND FOOTWEAR	HOUSING, WATER, ELECTRICITY, GAS AND OTHER FUELS	FURNISHINGS, HOUSEHOLD EQUIPMENT AND ROUTINE MAINTENANCE OF THE HOUSE	HEALTH	TRANSPORT	COMMUNICATIONS	RECREATION AND CULTURE	EDUCATION	HOTELS, CAFES AND RESTAURANTS	MISCELLANEOUS GOODS AND SERVICES	ALL ITEMS	
Weights	29.63	3.26	5.13	20.59	5.61	1.51	14.79	0.90	2.50	7.36	1.62	7.11	100.0	
Year	Month													
2009	Dec-01	100.0	100.0	100.0	100.0	100.0	100.0	100.0	100.0	100.0	100.0	100.0	100.0	100.0
	Jun-09	192.5	186.4	121.9	146.8	149.1	125.0	181.0	123.1	138.1	174.6	174.9	135.4	164.9
	Jul-09	192.0	187.9	124.3	150.7	148.7	125.7	184.5	123.1	140.8	174.6	179.0	135.9	166.3
	Aug-09	195.0	191.9	125.0	150.7	148.7	125.2	184.3	123.1	142.4	174.6	178.5	135.9	167.7
	Sep-09	193.9	192.1	126.5	151.1	149.4	125.6	185.5	123.2	141.0	174.6	180.9	136.3	167.6
	Oct-09	196.5	193.8	126.7	151.2	149.6	125.7	184.9	124.7	141.1	174.6	181.1	137.0	168.3
	Nov-09	196.3	194.6	128.5	151.3	150.4	125.7	186.4	124.6	142.1	174.6	181.0	136.5	168.6
	Dec-09	195.3	195.6	128.5	151.3	148.9	125.8	187.4	124.6	143.1	174.6	181.3	136.6	168.4
	An. Av	192.6	187.2	122.6	148.8	148.2	124.5	181.2	123.5	139.4	174.6	176.6	135.2	165.4
2010	Jan-10	197.5	196.3	128.1	154.2	150.6	128.9	189.2	124.9	141.7	183.8	185.6	139.6	170.9
	Feb-10	199.0	197.0	127.5	154.3	150.6	128.8	189.9	124.6	142.5	183.8	186.0	140.1	171.6
	Mar-10	198.5	203.4	127.3	154.3	151.3	128.9	189.7	124.9	142.6	183.8	186.7	139.6	171.8
	Apr-10	198.3	204.1	125.7	153.9	150.1	129.4	191.6	124.9	143.2	183.8	189.7	140.4	171.7
	May-10	197.1	206.4	127.6	154.5	150.8	129.5	193.6	124.9	144.4	183.8	189.5	139.7	171.9
	Jun-10	197.4	207.0	127.8	154.6	151.8	130.5	193.0	125.0	145.0	183.8	190.2	139.6	172.0
	Jul-10	199.4	208.8	128.0	160.5	151.6	130.8	193.8	124.9	146.5	183.8	191.7	140.1	174.0
	Aug-10	199.2	208.4	127.1	160.5	150.9	131.1	192.9	124.9	144.6	183.8	193.8	141.4	173.7
	Sep-10	200.1	208.9	125.6	160.5	151.4	131.7	191.3	124.9	144.1	183.8	193.9	142.2	173.8
	Oct-10	199.9	209.0	125.0	160.6	150.7	131.7	192.7	125.4	144.7	183.8	193.8	142.3	173.7
	Nov-10	201.1	209.9	125.2	160.5	149.7	131.7	193.6	125.6	144.9	183.8	194.3	142.4	174.3
	Dec-10	199.6	209.8	124.9	160.6	150.3	131.6	193.1	125.9	144.0	183.8	195.4	142.4	173.6
	An. Av	198.9	205.8	126.7	157.4	150.8	130.4	192.0	125.1	144.0	183.8	190.9	140.8	172.7
2011	Jan-11	200.9	209.8	125.9	171.5	151.4	136.6	194.7	126.4	144.5	193.2	196.4	144.9	176.8
	Feb-11	201.3	209.4	127.0	170.6	151.2	136.7	196.0	126.4	147.0	193.2	195.6	144.3	176.9
	Mar-11	203.6	215.3	126.3	170.8	151.3	137.4	197.8	126.5	147.1	193.2	200.6	144.6	178.3
	Apr-11	206.8	218.8	126.9	170.7	152.2	137.6	200.9	126.5	148.4	193.2	200.3	144.2	180.0
	May-11	208.0	219.3	126.4	171.0	152.8	138.2	202.4	126.5	149.2	193.2	198.6	147.0	180.8
	Jun-11	208.9	220.4	126.9	171.0	154.3	138.0	202.2	126.7	148.7	193.2	198.8	147.1	181.2
	Jul-11	209.9	220.8	126.9	173.4	154.8	138.0	203.3	126.6	149.7	193.2	199.9	147.5	182.3
	Aug-11	211.0	221.6	128.4	173.7	154.5	137.9	204.3	126.6	150.4	193.2	199.4	147.3	183.1
	Sep-11	211.4	221.7	128.6	175.0	154.4	138.5	203.1	126.7	150.7	193.2	200.5	147.2	183.0
	Oct-11	213.9	221.6	130.4	175.3	155.6	138.2	205.9	127.1	152.1	193.2	201.4	147.4	184.4
	Nov-11	214.6	223.2	131.0	175.5	155.6	138.2	206.3	127.1	151.7	193.2	202.1	147.6	184.7
	Dec-11	217.7	223.5	130.4	175.4	156.9	138.2	208.1	127.1	154.2	193.2	202.5	147.5	186.1
	An. Av	209.0	218.8	127.9	172.8	153.8	137.8	202.1	126.7	149.5	193.2	199.7	146.4	181.5
2012	Jan-12	219.2	223.9	129.1	180.7	158.8	142.0	208.2	127.2	156.2	200.1	204.2	149.5	188.5
	Feb-12	221.1	227.6	129.7	180.4	158.7	142.5	211.9	127.2	160.0	200.1	204.2	154.5	190.1
	Mar-12	223.3	234.4	129.1	178.6	160.5	142.7	213.6	127.2	158.5	200.1	204.3	154.2	190.7
	Apr-12	224.4	236.3	129.0	178.5	161.7	143.0	215.9	127.2	161.1	200.1	204.9	154.2	191.4
	May-12	224.4	237.9	128.4	178.4	160.2	142.7	218.7	127.2	162.5	200.1	207.7	152.4	191.7
	Jun-12	223.0	237.5	128.7	178.5	160.8	142.8	218.2	127.2	162.5	200.1	207.9	153.5	191.3
	Jul-12	226.3	238.2	128.9	185.7	161.8	142.8	215.9	126.6	164.2	200.1	208.8	151.4	193.2
	Aug-12	226.4	239.8	129.8	186.5	162.7	142.9	216.5	126.6	164.5	200.1	210.4	152.5	193.7
	Sep-12	230.7	241.0	131.9	188.3	165.2	143.2	215.9	126.1	163.1	200.1	214.0	152.4	195.3
	Oct-12	235.6	242.9	132.2	188.3	165.2	143.5	218.4	129.2	164.6	200.1	214.2	152.6	197.5
	Nov-12	238.2	243.3	132.3	188.4	166.7	143.5	220.2	129.8	165.5	200.1	214.8	152.8	198.7

Table 4: Namibia CPI annual trends over the last four months

		Index (Dec.2001=100)				Aug-12	Sep-12	Oct-12	Nov-12
		Aug-12	Sep-12	Oct-12	Nov-12				
1	FOOD AND NON-ALCOHOLIC BEVERAGES	226.4	230.7	235.6	238.2	7.3	9.2	10.1	11.0
2	ALCOHOLIC BEVERAGES AND TOBACCO	239.8	241.0	242.9	243.3	8.2	8.7	9.6	9.0
03.	CLOTHING AND FOOTWEAR	129.8	131.9	132.2	132.3	1.0	2.6	1.5	1.1
04.	HOUSING, WATER, ELECTRICITY, GAS AND OTHER FUELS	186.5	188.3	188.3	188.4	7.4	7.6	7.4	7.4
05.	FURNISHINGS, HOUSEHOLD EQUIPMENT AND ROUTINE MAINTENANCE OF THE HOUSE	162.7	165.2	165.2	166.7	5.3	6.9	6.2	7.2
06.	HEALTH	142.9	143.2	143.5	143.5	3.6	3.4	3.8	3.8
07.	TRANSPORT	216.5	215.9	218.4	220.2	6.0	6.3	6.1	6.7
08.	COMMUNICATIONS	126.6	126.1	129.2	129.8	0.0	-0.5	1.7	2.1
09.	RECREATION AND CULTURE	164.5	163.1	164.6	165.5	9.4	8.2	8.2	9.1
10.	EDUCATION	200.1	200.1	200.1	200.1	3.6	3.6	3.6	3.6
11.	HOTELS, CAFES AND RESTAURANTS	210.4	214.0	214.2	214.8	5.6	6.7	6.4	6.3
12.	MISCELLANEOUS GOODS AND SERVICES	152.5	152.4	152.6	152.8	3.5	3.5	3.5	3.6
	ALL-ITEMS INDEX	193.7	195.3	197.5	198.7	5.8	6.7	7.1	7.6
	EDUCATION RELATED EXPENSES	180.8	179.8	180.2	180.8	4.1	3.5	5.2	5.3
	GOODS	198.3	199.6	201.3	202.4	5.3	6.2	6.2	6.5
	SERVICES	186.3	188.5	191.3	192.6	6.7	7.5	8.7	9.4

Chart 5: NCPI November 2012: Changes by major groups (Dec. 2001 =100)

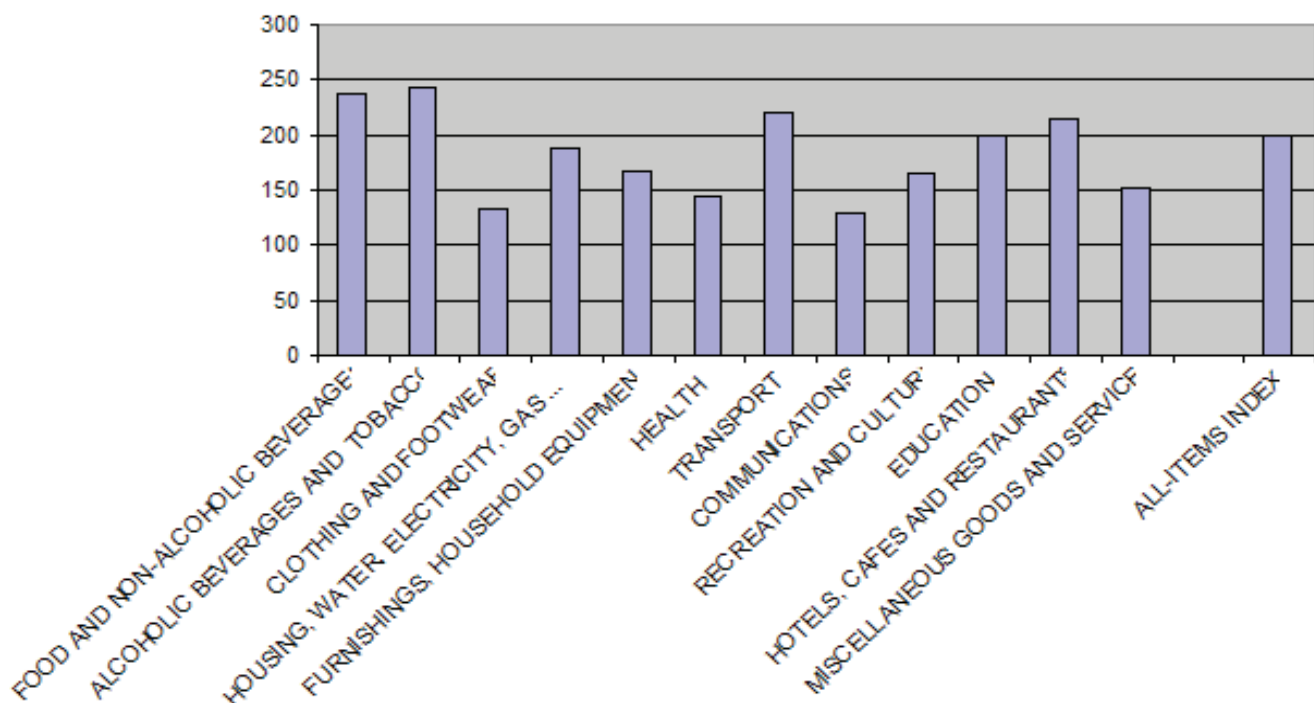


Table 5: Namibia CPI; Goods and Services (December 2001=100)

Table 5: Namibia CPI; Goods and Services (December 2001=100)							
Services				Goods			
Period	Index	monthly inflation rate	Annual inflation rate	Index	monthly inflation rate	Annual inflation rate	
2009							
June	154.5	0.3	8.5	171.5	0.5	9.4	
July	156.4	1.2	6.0	172.5	0.6	8.3	
Aug	156.9	0.3	6.1	174.6	1.2	8.5	
Sept	156.4	-0.3	5.6	174.8	0.1	7.9	
Oct	156.4	0.0	4.2	175.8	0.6	8.7	
Nov	157.0	0.4	4.0	175.9	0.1	8.2	
Dec	157.2	0.1	4.0	175.5	-0.3	8.7	
An. Av	156.0	0.3	7.4	171.4	0.7	9.6	
2010							
Jan	162.2	3.2	5.6	176.4	0.5	6.7	
Feb	162.2	0.0	4.8	177.4	0.6	7.1	
Mar	163.5	0.8	5.5	177.0	-0.3	6.2	
Apr	164.0	0.3	6.1	176.6	-0.2	5.4	
May	165.3	0.8	7.2	176.1	-0.3	3.2	
June	165.7	0.2	7.2	175.9	-0.1	2.6	
July	167.7	1.2	7.2	177.9	1.1	3.2	
Aug	167.5	-0.1	6.8	177.6	-0.2	1.7	
Sept	167.6	0.0	7.2	177.8	0.1	1.7	
Oct	167.8	0.1	7.3	177.4	-0.2	0.9	
Nov	168.3	0.3	7.2	178.0	0.3	1.2	
Dec	167.6	-0.4	6.6	177.4	-0.3	1.1	
An. Av	165.8	0.5	6.6	177.1	0.1	3.4	
2011							
Jan	172.2	2.7	6.1	179.7	1.3	1.9	
Feb	172.7	0.3	6.4	179.6	-0.1	1.2	
Mar	172.6	-0.03	5.6	181.9	1.3	2.8	
Apr	172.7	0.1	5.3	184.6	1.5	4.5	
May	170.9	-1.1	3.4	187.1	1.4	6.3	
June	172.5	1.0	4.1	186.6	-0.3	6.1	
July	174.5	1.2	4.1	187.2	0.3	5.2	
Aug	174.7	0.1	4.3	188.3	0.6	6.1	
Sep	175.3	0.4	4.6	187.8	-0.3	5.7	
Oct	176.0	0.4	4.9	189.7	1.0	6.9	
Nov	176.1	0.03	4.6	190.1	0.2	6.8	
Dec	176.6	0.30	5.4	192.1	1.1	8.3	
An. Av	173.9	0.4	4.9	186.2	0.7	5.1	
2012							
Jan	179.1	1.4	4.0	194.5	1.2	8.2	
Feb	179.5	0.3	4.0	196.7	1.1	9.5	
Mar	180.3	0.4	4.4	197.2	0.3	8.4	
Apr	181.1	0.5	4.9	197.9	0.4	7.2	
May	183.2	1.1	7.2	197.1	-0.4	5.3	
June	183.7	0.3	6.5	196.1	-0.5	5.1	
July	187.2	1.9	7.2	196.9	0.4	5.2	
Aug	186.3	-0.5	6.7	198.3	0.7	5.3	
Sep	188.5	1.2	7.5	199.6	0.6	6.2	
Oct	191.3	1.5	8.7	201.3	0.9	6.2	
Nov	192.6	0.7	9.4	202.4	0.5	6.5	



P.O.Box 2133
FGI House, Post Street Mall
Windhoek, Namibia
Tel: +264 61 431 3200
Fax: +264 61 431 3253 | +264 61 431 3240
Website: www.nsa.org.na