

Monthly Building Plans Report

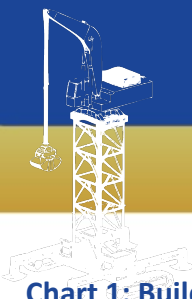
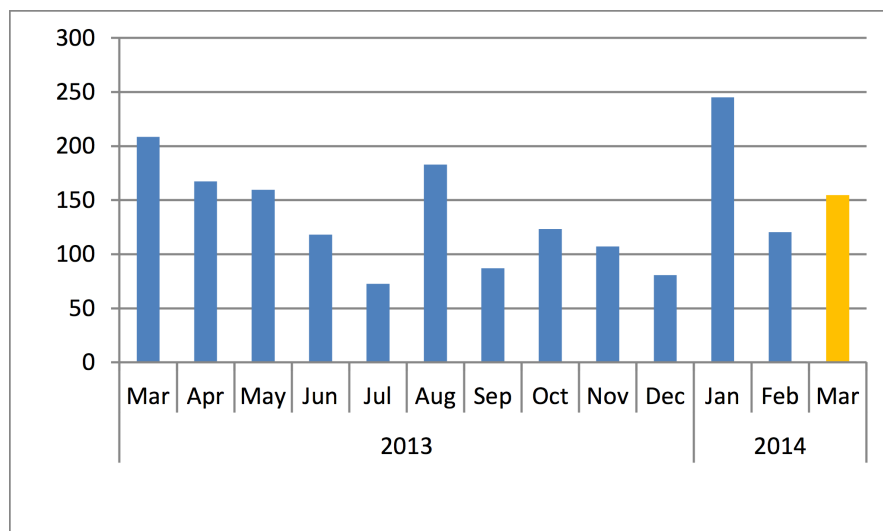


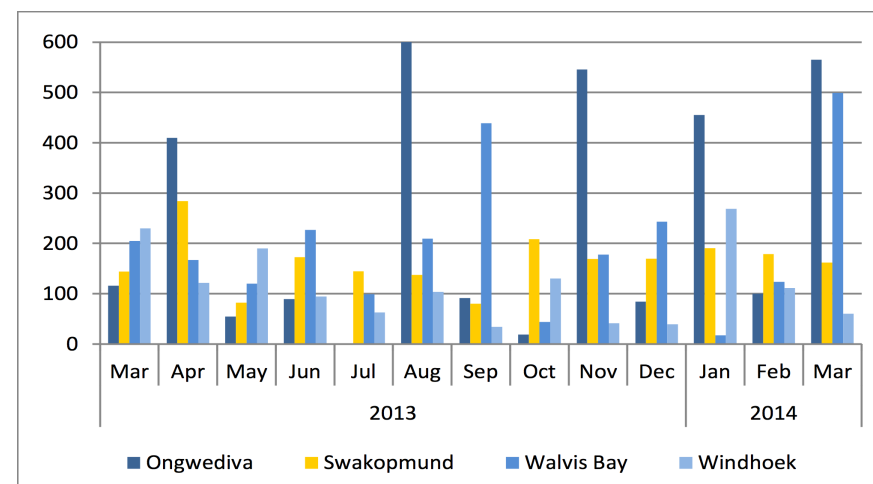
Chart 1: Buildings Completed Index (Respective Month 2010 = 100)



The composite index for March 2014 stood at 155 compared to that of 208 in March 2013, representing a decline of 25.7 per cent year-on-year, and an increase of 28.4 per cent when compared to Feb. 2014. The total value of all buildings completed stood at N\$72.9m; representing a decline of 33.7 per cent when compared to a month of Feb. 2014 (N\$ 110.1m) and an increase of 14.9 per cent from that of the base period (March 2010) that recorded N\$ 63.5m.

The City of Windhoek is the main contributor to the total values of buildings completed, contributing N\$ 28.6m and Ongwediva is the least contributor. Both Swakopmund and Walvis Bay have contributed about 17m each.

Chart 2: Buildings Completed Indices For Selected Towns (Respective Month 2010 = 100)



Note: The index for Ongwediva in Aug. 2013 exceeded the limited index and stood at 1020. In order to improve readability, we have limited the index to 600.

The city of Windhoek accounted for 75.0 per cent of the total value of all buildings completed in the base month (March), but recorded the lowest index in March 2014. However, the City of Windhoek recorded the highest index in the corresponding month of 2013 (Chart 2).

Swakopmund is the second lowest with an index of 162. Ongwediva and Walvis bay were the highest with an index of 565 and 499 but accounted for the lowest percentage of the total value of all building completed in the base month of 2.6 per cent and 5.6 per cent, respectively. The value of buildings completed for Ongwediva stood at 9.4m; the highest value when compared to 1.9m and 1.7m in March 2013 and 2010, but the lowest value relative to the other selected towns.

The NSA monitors the value and number of buildings completed for 24 local authorities on a monthly basis. Four of these towns that accounted for 92 per cent of the total values of all buildings completed in 2010 have been selected for the index.

