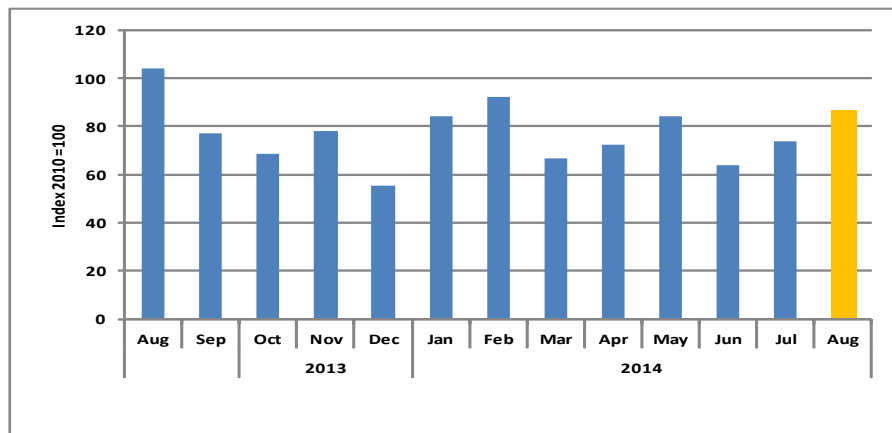




**Chart 1: Composite Transport Index**

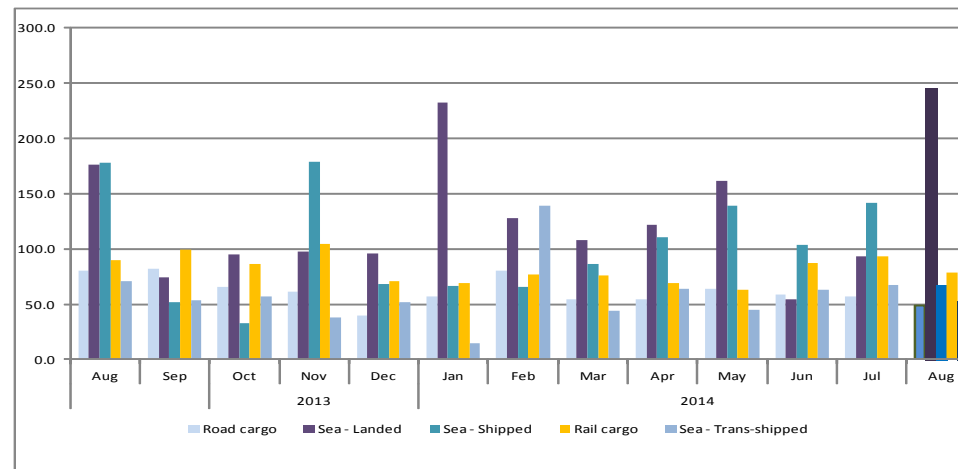


The composite transport index consists of Rail cargo, Road cargo and sea cargo and the index is picking momentum from June 2014 to August 2014, however, it continues to hover below the base year index of 100. The highest index recorded was in August of 2013 which stood at 104.2, above the base year index during the reporting period.

In the month of August 2014, the index stood at 86.4 up by 12.7 basis points m/m and down by 17.8 basis points y/y.

(Chart 2) Sea cargo handled still leads the transport composite index and it continues to increase its contributing share from 70.6 per cent in July 2014 to 81.4 per cent in August 2014 to the total cargo handled. In volume terms, it stood at 678 236 tonnes during the month of August 2014 higher than the previous month by 238 264 tonnes.

**Chart 2: Transport Sub-Sectors Index**



The sea- landed takes over from the sea- shipped in leading the subsectors with an index of 245.3, a huge increase of 163.1 per cent m/m and an increase of 39.1 per cent y/y. Whereas, the road cargo lags behind the pack and it continues to decline from 56.7 basis points in July 2014 to 49.1 basis points in August 2014. Year on year comparison, road cargo is still performing poorly, with a difference of 31.2 basis points.

Sea- shipped, Rail cargos and sea- transhipped also took a deep when compared to the previous month of July 2014, recording indices of 66.9, 78.5 and 52.3 basis points, representing a decline of 52.7 per cent, 15.8 per cent, and 21.9 per cent, respectively.

When compared to the corresponding month of 2013, the subsectors recorded declines of 62.4 per cent, 12.5 per cent and 25.6 per cent, respectively. Sea- shipped is the biggest loser in the pack, registering huge declines, when compared to both the previous month and the corresponding month of August 2013.



**Table 1 A: Overall/Sub-Sector Index**

Year	Month	Rail cargo	Road cargo	Sea cargo	Overall
2011	Jan	94.1	69.8	87.5	77.9
	Feb	83.9	72.4	128.9	93.0
	Mar	100.7	89.9	62.5	81.3
	Apr	81.8	85.3	77.2	82.2
	May	87.9	91.3	112.9	98.5
	Jun	89.2	96.5	93.0	94.7
	Jul	98.5	95.5	109.0	100.4
	Aug	121.3	103.4	120.3	110.7
	Sep	120.4	95.5	77.1	91.1
	Oct	112.9	98.4	131.3	111.0
	Nov	118.2	99.2	114.8	106.2
	Dec	78.2	80.8	78.2	79.7
2012	Jan	104.1	98.9	107.6	102.3
	Feb	72.1	82.2	145.7	103.4
	Mar	97.6	92.1	91.4	92.3
	Apr	87.0	71.6	118.6	89.2
	May	95.4	75.8	83.9	80.2
	Jun	89.5	90.0	141.0	107.7
	Jul	95.9	90.2	131.7	105.1
	Aug	94.1	87.9	149.1	109.7
	Sep	100.5	96.3	76.3	89.7
	Oct	111.5	92.9	123.1	104.9
	Nov	95.2	104.4	124.6	110.6
	Dec	71.6	82.6	104.0	89.1

**Table 1 B: Overall/Sub-Sector Index**

Year	Month	Rail cargo	Road cargo	Sea cargo	Overall
2013	Jan	88.1	87.0	158.6	112.0
	Feb	71.2	77.1	117.7	90.7
	Mar	69.9	78.0	75.5	76.5
	Apr	94.8	84.5	98.9	90.4
	May	93.4	80.5	83.9	82.8
	Jun	89.7	75.4	99.0	84.7
	Jul	105.9	74.9	144.9	101.7
	Aug	89.6	80.3	147.0	104.2
	Sep	99.0	82.4	63.1	77.0
	Oct	86.2	65.2	69.6	68.5
	Nov	104.4	61.2	100.0	78.2
	Dec	70.5	39.9	77.4	55.4
2014	Jan	68.6	57.1	132.8	84.3
	Feb	76.6	79.9	116.6	92.3
	Mar	75.9	54.4	84.9	66.8
	Apr	69.2	54.3	102.9	72.4
	May	63.2	63.5	123.7	84.4
	Jun	87.5	58.3	68.0	64.0
	Jul	93.2	56.7	97.1	73.7
	Aug	78.5	49.1	149.7	86.4

**Table 2 A: Transport Sector Volumes In Tonnes**

Year	Month	Rail cargo	Road cargo	Sea - Landed	Sea - Shipped	Sea - Trans-shipped
2011	Jan	158 313	32 985	230 441	99 705	66 387
	Feb	141 094	34 227	347 382	168 501	68 173
	Mar	169 490	42 462	148 039	89 998	45 408
	Apr	137 624	40 314	222 378	89 309	38 110
	May	147 904	43 146	344 304	75 312	92 104
	Jun	150 013	45 604	228 433	133 483	59 578
	Jul	165 678	45 098	238 958	158 883	96 096
	Aug	204 048	48 868	278 304	151 861	115 038
	Sep	202 587	45 127	193 097	57 216	98 890
	Oct	189 969	46 486	341 520	178 950	74 415
	Nov	198 892	46 886	248 056	76 148	195 876
	Dec	131 536	38 169	136 732	111 492	106 282
2012	Jan	175 153	46 711	339 939	49 512	98 176
	Feb	121 321	38 826	324 259	162 313	173 685
	Mar	164 157	43 527	213 228	116 831	84 306
	Apr	146 452	33 851	333 259	94 466	109 665
	May	160 458	35 808	171 140	100 150	108 786
	Jun	150 651	42 534	349 940	145 318	143 462
	Jul	161 273	42 620	245 170	169 805	182 051
	Aug	158 337	41 532	322 198	193 698	159 947
	Sep	169 059	45 521	177 298	72 114	96 293
	Oct	187 646	43 905	278 494	143 863	135 477
	Nov	160 101	49 305	232 621	139 030	193 198
	Dec	120 543	39 013	227 104	86 574	157 746

**Table 2 A: Transport Sector Volumes In Tonnes**

Year	Month	Rail cargo	Road cargo	Sea - Landed	Sea - Shipped	Sea - Trans-shipped
2013	Jan	148 222	41 103	413 210	118 011	187 652
	Feb	119 758	36 449	240 472	168 407	124 496
	Mar	117 597	36 868	175 492	89 104	77 344
	Apr	159 446	39 946	213 901	167 374	67 102
	May	157 193	38 052	162 463	153 733	64 137
	Jun	150 931	35 613	313 392	84 325	50 850
	Jul	178 179	35 366	449 476	153 385	53 790
	Aug	150 805	37 920	389 125	187 365	89 449
	Sep	166 608	38 925	163 131	54 297	68 486
	Oct	145 087	30 819	208 864	34 403	72 018
	Nov	175 732	28 934	216 077	188 152	48 726
	Dec	118 530	18 859	212 347	72 265	66 073
2014	Jan	115 499	26 988	513 307	69 801	18 899
	Feb	128 862	37 738	282 139	69 319	176 798
	Mar	127 745	25 721	237 985	90 639	56 004
	Apr	116 492	25 677	268 490	116 437	81 263
	May	106 352	29 993	357 048	146 157	57 244
	Jun	147 180	27 549	119 098	109 368	79 595
	Jul	156 851	26 798	205 737	149 032	85 204
	Aug	132 008	23 180	541 235	70 489	66 513

**Table 3 A: Transport Subsector Index**

Year	Month	Rail cargo	Road cargo	Sea - Land	Sea - Ship	Sea - Trans-shipp
2011	Jan	94.1	69.8	104.5	94.6	52.2
	Feb	83.9	72.4	157.5	159.9	53.6
	Mar	100.7	89.9	67.1	85.4	35.7
	Apr	81.8	85.3	100.8	84.8	30.0
	May	87.9	91.3	156.1	71.5	72.4
	Jun	89.2	96.5	103.5	126.7	46.8
	Jul	98.5	95.5	108.3	150.8	75.6
	Aug	121.3	103.4	126.2	144.1	90.5
	Sep	120.4	95.5	87.5	54.3	77.8
	Oct	112.9	98.4	154.8	169.8	58.5
	Nov	118.2	99.2	112.4	72.3	154.0
	Dec	78.2	80.8	62.0	105.8	83.6
2012	Jan	104.1	98.9	154.1	47.0	77.2
	Feb	72.1	82.2	147.0	154.1	136.6
	Mar	97.6	92.1	96.7	110.9	66.3
	Apr	87.0	71.6	151.1	89.7	86.2
	May	95.4	75.8	77.6	95.1	85.5
	Jun	89.5	90.0	158.6	137.9	112.8
	Jul	95.9	90.2	111.1	161.2	143.1
	Aug	94.1	87.9	146.0	183.8	125.8
	Sep	100.5	96.3	80.4	68.4	75.7
	Oct	111.5	92.9	126.2	136.5	106.5
	Nov	95.2	104.4	105.4	132.0	151.9
	Dec	71.6	82.6	102.9	82.2	124.0

**Table 3 B: Transport Subsector Index**

Year	Month	Rail cargo	Road cargo	Sea - Land	Sea - Ship	Sea - Trans-shipp
2013	Jan	88.1	87.0	187.3	112.0	147.5
	Feb	71.2	77.1	109.0	159.8	97.9
	Mar	69.9	78.0	79.5	84.6	60.8
	Apr	94.8	84.5	97.0	158.9	52.8
	May	93.4	80.5	73.6	145.9	50.4
	Jun	89.7	75.4	142.1	80.0	40.0
	Jul	105.9	74.9	203.7	145.6	42.3
	Aug	89.6	80.3	176.4	177.8	70.3
	Sep	99.0	82.4	73.9	51.5	53.8
	Oct	86.2	65.2	94.7	32.7	56.6
	Nov	104.4	61.2	97.9	178.6	38.3
	Dec	70.5	39.9	96.3	68.6	52.0
2014	Jan	68.6	57.1	232.7	66.3	14.9
	Feb	76.6	79.9	127.9	65.8	139.0
	Mar	75.9	54.4	107.9	86.0	44.0
	Apr	69.2	54.3	121.7	110.5	63.9
	May	63.2	63.5	161.8	138.7	45.0
	Jun	87.5	58.3	54.0	103.8	62.6
	Jul	93.2	56.7	93.3	141.5	67.0
	Aug	78.5	49.1	245.3	66.9	52.3

## Methodology

The information provided is on rail cargo, road cargo and sea cargo which comprises of sea landed, sea shipped and sea trans- shipped and the sources of data is Transnamib for road and rail cargo and Namport for sea cargo.

The reference period for the index is 2010, and the overall index weights are used in calculations.