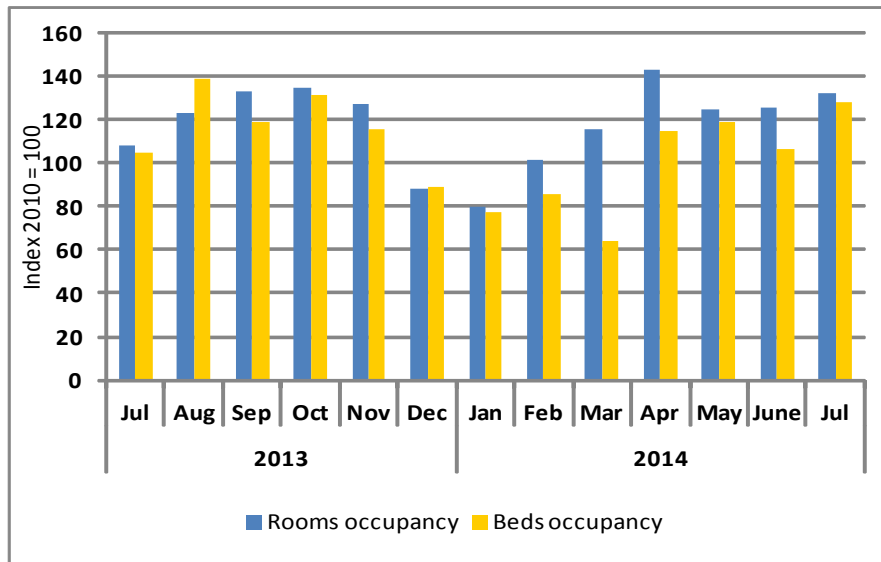




**Chart 1: Bed and Room Occupancy Indices**

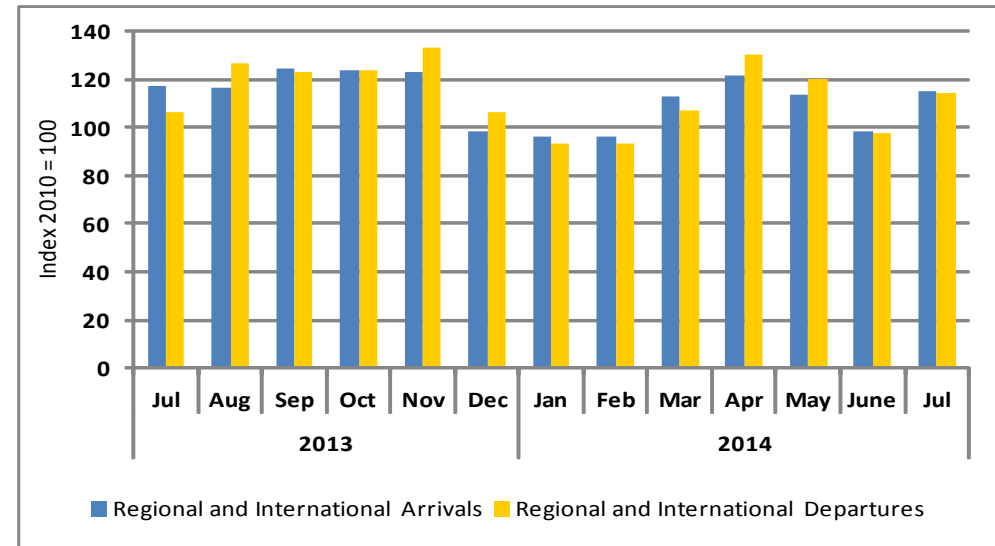


The beds and rooms occupancy rate indices have shown mixed trends over the past year, with the two indices standing at 128.2 and 132.5 points, respectively, in July 2014. Thus, the two indices are up 22.6 and 23.0 per cent y/y, and up 20.7 per cent and 5.6 per cent m/m, respectively.

On average, the beds and rooms occupancy rate indices for the period January to July 2014 stood at 99.2 points and 117.4 points compared to 85.0 points and 91.7 points reported in the same period of 2013, representing increases of 16.7 per cent and 28.0 per cent, respectively.

The positive increases in bed and room occupancy between May and July 2014 are highly illustrative of the seasonality in the sector, as these months are generally recognised to be the height of the tourism season.

**Chart 2: Regional and International Arrival and Departure Indices**

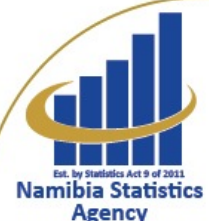


The index levels for regional and international arrivals and departures stood at 114.8 points and 114.1 points in July 2014. This compares to 117.4 points and 106.6 points recorded in July 2013, representing a decline of 2.2 per cent y/y for the former and an increase of 7.1 per cent y/y for the latter. On the other hand, increases of 16.4 per cent and 16.6 per cent, respectively, were seen on a month on month basis.

The index for regional and international arrivals for June and July 2014 exceeds that for regional and international departures, suggesting that a number of visitors, particularly tourists, have arrived in the country, and not yet left, which may signify increasing holiday durations by tourists as the global economy recovers.

The numbers of arrival passengers for July 2014 stood at 34,646, while departures numbers of 33,665 passengers were seen. This compares to 35,424 and 31,436 arrival and departure passengers, respectively, in the same month of 2013.

*These serves as a proxy to tourism sector, a priority sector under NDP4 and contributes 1.8 per cent to GDP in 2013 compared to 1.6 per cent in 2012.*



**Table 1: The indices of regional and International arrivals and departures, and bed and room occupancy rates**

		Arrivals (reg. & intern.)	Departures (reg. & intern.)	Room occupancy	Bed occupancy
<b>2010</b>	<b>Jan</b>	85.1	90.3	63.3	70.9
	<b>Feb</b>	83.6	81.9	67.7	68.4
	<b>Mar</b>	107.6	96.5	90.5	90.1
	<b>Apr</b>	92.7	105.1	106.6	110.6
	<b>May</b>	104.6	98.6	104.4	99.6
	<b>Jun</b>	76.6	82.7	86.9	85.5
	<b>Jul</b>	102.1	86.0	94.2	94.9
	<b>Aug</b>	125.9	127.2	136.9	134.7
	<b>Sep</b>	116.6	115.3	134.2	132.4
	<b>Oct</b>	116.8	118.5	127.8	129.6
	<b>Nov</b>	97.3	103.9	116.0	107.5
	<b>Dec</b>	91.1	93.9	71.5	75.9
<b>2011</b>	<b>Jan</b>	87.9	89.3	53.5	55.9
	<b>Feb</b>	87.4	84.5	68.4	61.5
	<b>Mar</b>	101.9	98.6	68.7	68.8
	<b>Apr</b>	110.9	114.0	78.8	100.5
	<b>May</b>	100.2	105.4	77.1	85.0
	<b>Jun</b>	92.3	92.3	76.5	77.7
	<b>Jul</b>	123.1	109.4	87.8	98.8
	<b>Aug</b>	122.2	133.7	80.0	116.4
	<b>Sep</b>	117.8	119.9	98.3	101.0
	<b>Oct</b>	134.5	129.8	110.1	122.5
	<b>Nov</b>	113.2	127.7	98.2	108.3
	<b>Dec</b>	110.1	114.6	72.7	79.3
<b>2012</b>	<b>Jan</b>	95.5	108.2	59.4	60.4
	<b>Feb</b>	95.4	94.0	81.0	71.0
	<b>Mar</b>	113.2	109.2	85.5	77.0
	<b>Apr</b>	119.9	127.6	99.0	97.0
	<b>May</b>	114.6	113.7	94.9	89.3
	<b>Jun</b>	108.0	107.3	89.7	82.4
	<b>Jul</b>	135.5	126.6	105.5	101.9
	<b>Aug</b>	145.9	152.7	131.8	127.2
	<b>Sep</b>	134.2	131.5	126.9	117.3
	<b>Oct</b>	133.0	135.4	126.7	116.2
	<b>Nov</b>	111.8	121.7	121.7	112.8
	<b>Dec</b>	107.5	83.0	91.1	99.3

		Arrivals (reg. & intern.)	Departures (reg. & intern.)	Room occupancy	Bed occupancy
<b>2013</b>	<b>Jan</b>	96.9	99.5	58.6	57.0
	<b>Feb</b>	86.2	80.9	85.3	74.9
	<b>Mar</b>	108.3	105.5	92.8	85.9
	<b>Apr</b>	104.4	111.9	98.8	90.5
	<b>May</b>	113.7	114.9	102.9	95.6
	<b>Jun</b>	98.3	97.2	96.0	86.8
	<b>Jul</b>	117.4	106.6	107.8	104.5
	<b>Aug</b>	116.6	126.9	123.0	138.8
	<b>Sep</b>	124.7	123.1	133.2	118.8
	<b>Oct</b>	123.5	123.8	134.6	131.3
	<b>Nov</b>	123.1	133.0	127.5	115.2
	<b>Dec</b>	98.5	106.6	88.1	88.8
<b>2014</b>	<b>Jan</b>	96.4	93.1	79.4	77.2
	<b>Feb</b>	96.2	93.4	101.1	85.9
	<b>Mar</b>	112.7	107.1	115.3	63.9
	<b>Apr</b>	121.8	130.6	142.8	114.6
	<b>May</b>	113.7	120.1	124.9	118.5
	<b>Jun</b>	98.7	97.9	125.5	106.2
	<b>Jul</b>	114.8	114.1	132.5	128.2

These serves as a proxy to tourism sector, a priority sector under NDP4 and contributes 1.8 per cent to GDP in 2013 compared to 1.6 per cent in 2012.

## Methodology

<b>Background</b>	The room and bed occupancy indices and the arrival and departure indices serves as proxies to the tourism sector, a priority sector under NDP4.
<b>Data Sources</b>	Namibia Airport Company and Hospitality Association of Namibia
<b>Base year</b>	2010

---

*These serves as a proxy to tourism sector, a priority sector under NDP4 and contributes 1.8 per cent to GDP in 2013 compared to 1.6 per cent in 2012.*