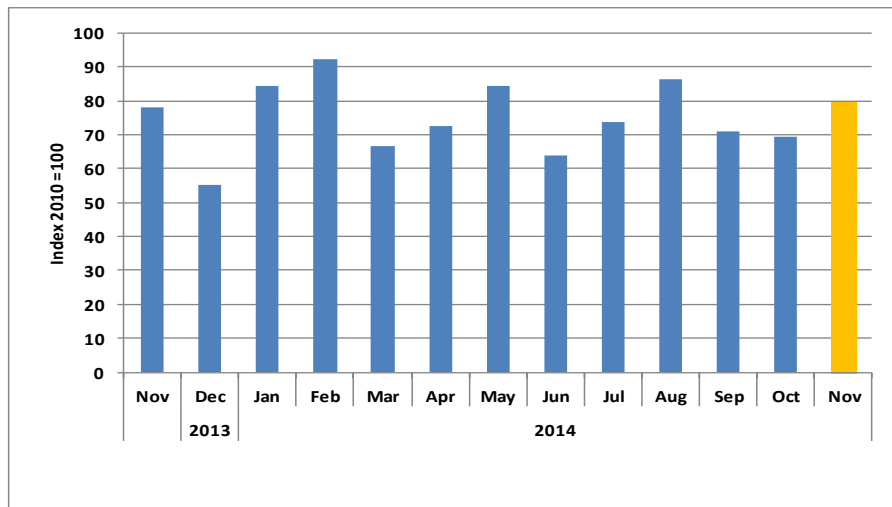




Chart 1: Composite Transport Index



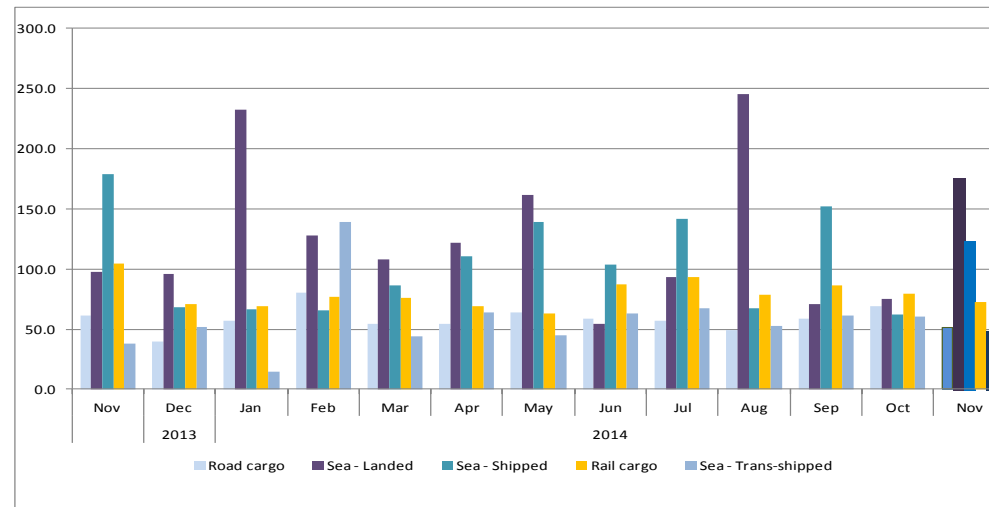
The composite transport index consists of rail cargo, road cargo and sea cargo. In November 2014 the total transport index jumped by 10.2 basis points when compared to the previous month of October 2014, registering an index of 79.8. However, year on year comparison the index slightly gained momentum by 1.6 basis points.

The index continues to hover below the base year index of 100 from November 2013 to November 2014, only in February 2014 when it came closer to the 100 mark with an index of 92.3.

The composite transport index in November 2014 was mainly driven by sea transport with an index of 127.7 followed by rail cargo recording 72.2 basis points.

In volume terms, total cargo handled slowed to 568 156 tons in November 2014 compared to 833 424 tons m/m, representing a decline of 31.8 per cent. When compared to y/y, the total cargo handled also declined by 13.6 per cent.

Chart 2: Transport Sub-Sectors Index



Road and Sea trans-shipped indices stood at 51.7 and 48.5 basis points, representing declines of 25.3 per cent and 19.8 per cent m/m. Whereas, y/y sea trans-shipped posted a positive growth of 26.6 per cent and road cargo recorded a decline of 15.5 per cent, respectively.

Sea- landed posted a sharp increase of 100.6 basis points on m/m and 77.3 basis points on y/y after registering an index of 175.2 in November 2014.

Sea- shipped recorded a good performance with an index of 123.8 in November 2014 from an index of 62.3 in October 2014, and took a deep of 30.7 per cent when compared y/y.

Lastly, rail cargo declined in November 2014 recording an index of 72.2 basis points, declining by 7.0 basis points m/m and 32.2 basis points y/y.

Table 1 A: Overall/Sub-Sector Index

| Year | Month | Rail cargo | Road cargo | Sea cargo | Overall |
|------|-------|------------|------------|-----------|---------|
| 2011 | Jan | 94.1 | 69.8 | 87.5 | 77.9 |
| | Feb | 83.9 | 72.4 | 128.9 | 93.0 |
| | Mar | 100.7 | 89.9 | 62.5 | 81.3 |
| | Apr | 81.8 | 85.3 | 77.2 | 82.2 |
| | May | 87.9 | 91.3 | 112.9 | 98.5 |
| | Jun | 89.2 | 96.5 | 93.0 | 94.7 |
| | Jul | 98.5 | 95.5 | 109.0 | 100.4 |
| | Aug | 121.3 | 103.4 | 120.3 | 110.7 |
| | Sep | 120.4 | 95.5 | 77.1 | 91.1 |
| | Oct | 112.9 | 98.4 | 131.3 | 111.0 |
| | Nov | 118.2 | 99.2 | 114.8 | 106.2 |
| | Dec | 78.2 | 80.8 | 78.2 | 79.7 |
| 2012 | Jan | 104.1 | 98.9 | 107.6 | 102.3 |
| | Feb | 72.1 | 82.2 | 145.7 | 103.4 |
| | Mar | 97.6 | 92.1 | 91.4 | 92.3 |
| | Apr | 87.0 | 71.6 | 118.6 | 89.2 |
| | May | 95.4 | 75.8 | 83.9 | 80.2 |
| | Jun | 89.5 | 90.0 | 141.0 | 107.7 |
| | Jul | 95.9 | 90.2 | 131.7 | 105.1 |
| | Aug | 94.1 | 87.9 | 149.1 | 109.7 |
| | Sep | 100.5 | 96.3 | 76.3 | 89.7 |
| | Oct | 111.5 | 92.9 | 123.1 | 104.9 |
| | Nov | 95.2 | 104.4 | 124.6 | 110.6 |
| | Dec | 71.6 | 82.6 | 104.0 | 89.1 |

Table 1 B: Overall/Sub-Sector Index

| Year | Month | Rail cargo | Road cargo | Sea cargo | Overall |
|------|-------|------------|------------|-----------|---------|
| 2013 | Jan | 88.1 | 87.0 | 158.6 | 112.0 |
| | Feb | 71.2 | 77.1 | 117.7 | 90.7 |
| | Mar | 69.9 | 78.0 | 75.5 | 76.5 |
| | Apr | 94.8 | 84.5 | 98.9 | 90.4 |
| | May | 93.4 | 80.5 | 83.9 | 82.8 |
| | Jun | 89.7 | 75.4 | 99.0 | 84.7 |
| | Jul | 105.9 | 74.9 | 144.9 | 101.7 |
| | Aug | 89.6 | 80.3 | 147.0 | 104.2 |
| | Sep | 99.0 | 82.4 | 63.1 | 77.0 |
| | Oct | 86.2 | 65.2 | 69.6 | 68.5 |
| | Nov | 104.4 | 61.2 | 100.0 | 78.2 |
| | Dec | 70.5 | 39.9 | 77.4 | 55.4 |
| 2014 | Jan | 68.6 | 57.1 | 132.8 | 84.3 |
| | Feb | 76.6 | 79.9 | 116.6 | 92.3 |
| | Mar | 75.9 | 54.4 | 84.9 | 66.8 |
| | Apr | 69.2 | 54.3 | 102.9 | 72.4 |
| | May | 63.2 | 63.5 | 123.7 | 84.4 |
| | Jun | 87.5 | 58.3 | 68.0 | 64.0 |
| | Jul | 93.2 | 56.7 | 97.1 | 73.7 |
| | Aug | 78.5 | 49.1 | 149.7 | 86.4 |
| | Sep | 86.4 | 59.0 | 87.1 | 71.0 |
| | Oct | 79.2 | 69.3 | 67.8 | 69.6 |
| | Nov | 72.2 | 51.7 | 127.7 | 79.8 |

Table 2 A: Transport Sector Volumes In Tonnes

| Year | Month | Rail cargo | Road cargo | Sea - Landed | Sea - Shipped | Sea - Trans-shipped |
|-------|-------|------------|------------|--------------|---------------|---------------------|
| 2 011 | Jan | 158 313 | 32 985 | 230 441 | 99 705 | 66 387 |
| | Feb | 141 094 | 34 227 | 347 382 | 168 501 | 68 173 |
| | Mar | 169 490 | 42 462 | 148 039 | 89 998 | 45 408 |
| | Apr | 137 624 | 40 314 | 222 378 | 89 309 | 38 110 |
| | May | 147 904 | 43 146 | 344 304 | 75 312 | 92 104 |
| | Jun | 150 013 | 45 604 | 228 433 | 133 483 | 59 578 |
| | Jul | 165 678 | 45 098 | 238 958 | 158 883 | 96 096 |
| | Aug | 204 048 | 48 868 | 278 304 | 151 861 | 115 038 |
| | Sep | 202 587 | 45 127 | 193 097 | 57 216 | 98 890 |
| | Oct | 189 969 | 46 486 | 341 520 | 178 950 | 74 415 |
| | Nov | 198 892 | 46 886 | 248 056 | 76 148 | 195 876 |
| | Dec | 131 536 | 38 169 | 136 732 | 111 492 | 106 282 |
| 2 012 | Jan | 175 153 | 46 711 | 339 939 | 49 512 | 98 176 |
| | Feb | 121 321 | 38 826 | 324 259 | 162 313 | 173 685 |
| | Mar | 164 157 | 43 527 | 213 228 | 116 831 | 84 306 |
| | Apr | 146 452 | 33 851 | 333 259 | 94 466 | 109 665 |
| | May | 160 458 | 35 808 | 171 140 | 100 150 | 108 786 |
| | Jun | 150 651 | 42 534 | 349 940 | 145 318 | 143 462 |
| | Jul | 161 273 | 42 620 | 245 170 | 169 805 | 182 051 |
| | Aug | 158 337 | 41 532 | 322 198 | 193 698 | 159 947 |
| | Sep | 169 059 | 45 521 | 177 298 | 72 114 | 96 293 |
| | Oct | 187 646 | 43 905 | 278 494 | 143 863 | 135 477 |
| | Nov | 160 101 | 49 305 | 232 621 | 139 030 | 193 198 |
| | Dec | 120 543 | 39 013 | 227 104 | 86 574 | 157 746 |

Table 2 A: Transport Sector Volumes In Tonnes

| Year | Month | Rail cargo | Road cargo | Sea - Landed | Sea - Shipped | Sea - Trans-shipped |
|------|-------|------------|------------|--------------|---------------|---------------------|
| 2013 | Jan | 148 222 | 41 103 | 413 210 | 118 011 | 187 652 |
| | Feb | 119 758 | 36 449 | 240 472 | 168 407 | 124 496 |
| | Mar | 117 597 | 36 868 | 175 492 | 89 104 | 77 344 |
| | Apr | 159 446 | 39 946 | 213 901 | 167 374 | 67 102 |
| | May | 157 193 | 38 052 | 162 463 | 153 733 | 64 137 |
| | Jun | 150 931 | 35 613 | 313 392 | 84 325 | 50 850 |
| | Jul | 178 179 | 35 366 | 449 476 | 153 385 | 53 790 |
| | Aug | 150 805 | 37 920 | 389 125 | 187 365 | 89 449 |
| | Sep | 166 608 | 38 925 | 163 131 | 54 297 | 68 486 |
| | Oct | 145 087 | 30 819 | 208 864 | 34 403 | 72 018 |
| | Nov | 175 732 | 28 934 | 216 077 | 188 152 | 48 726 |
| | Dec | 118 530 | 18 859 | 212 347 | 72 265 | 66 073 |
| 2014 | Jan | 115 499 | 26 988 | 513 307 | 69 801 | 18 899 |
| | Feb | 128 862 | 37 738 | 282 139 | 69 319 | 176 798 |
| | Mar | 127 745 | 25 721 | 237 985 | 90 639 | 56 004 |
| | Apr | 116 492 | 25 677 | 268 490 | 116 437 | 81 263 |
| | May | 106 352 | 29 993 | 357 048 | 146 157 | 57 244 |
| | Jun | 147 180 | 27 549 | 119 098 | 109 368 | 79 595 |
| | Jul | 156 851 | 26 798 | 205 737 | 149 032 | 85 204 |
| | Aug | 132 008 | 23 180 | 541 235 | 70 489 | 66 513 |
| | Sep | 145 446 | 27 895 | 156 353 | 160 098 | 78 365 |
| | Oct | 133 231 | 32 729 | 164 712 | 65 618 | 76 873 |
| | Nov | 121 528 | 24 440 | 386 613 | 130 395 | 61 673 |

Table 3 A: Transport Subsector Index

| Year | Month | Rail cargo | Road cargo | Sea - Land | Sea - Ship | Sea - Trans-shipp |
|------|-------|------------|------------|------------|------------|-------------------|
| 2011 | Jan | 94.1 | 69.8 | 104.5 | 94.6 | 52.2 |
| | Feb | 83.9 | 72.4 | 157.5 | 159.9 | 53.6 |
| | Mar | 100.7 | 89.9 | 67.1 | 85.4 | 35.7 |
| | Apr | 81.8 | 85.3 | 100.8 | 84.8 | 30.0 |
| | May | 87.9 | 91.3 | 156.1 | 71.5 | 72.4 |
| | Jun | 89.2 | 96.5 | 103.5 | 126.7 | 46.8 |
| | Jul | 98.5 | 95.5 | 108.3 | 150.8 | 75.6 |
| | Aug | 121.3 | 103.4 | 126.2 | 144.1 | 90.5 |
| | Sep | 120.4 | 95.5 | 87.5 | 54.3 | 77.8 |
| | Oct | 112.9 | 98.4 | 154.8 | 169.8 | 58.5 |
| | Nov | 118.2 | 99.2 | 112.4 | 72.3 | 154.0 |
| | Dec | 78.2 | 80.8 | 62.0 | 105.8 | 83.6 |
| 2012 | Jan | 104.1 | 98.9 | 154.1 | 47.0 | 77.2 |
| | Feb | 72.1 | 82.2 | 147.0 | 154.1 | 136.6 |
| | Mar | 97.6 | 92.1 | 96.7 | 110.9 | 66.3 |
| | Apr | 87.0 | 71.6 | 151.1 | 89.7 | 86.2 |
| | May | 95.4 | 75.8 | 77.6 | 95.1 | 85.5 |
| | Jun | 89.5 | 90.0 | 158.6 | 137.9 | 112.8 |
| | Jul | 95.9 | 90.2 | 111.1 | 161.2 | 143.1 |
| | Aug | 94.1 | 87.9 | 146.0 | 183.8 | 125.8 |
| | Sep | 100.5 | 96.3 | 80.4 | 68.4 | 75.7 |
| | Oct | 111.5 | 92.9 | 126.2 | 136.5 | 106.5 |
| | Nov | 95.2 | 104.4 | 105.4 | 132.0 | 151.9 |
| | Dec | 71.6 | 82.6 | 102.9 | 82.2 | 124.0 |

Table 3 B: Transport Subsector Index

| Year | Month | Rail cargo | Road cargo | Sea - Land | Sea - Ship | Sea - Trans-shipp |
|------|-------|------------|------------|------------|------------|-------------------|
| 2013 | Jan | 88.1 | 87.0 | 187.3 | 112.0 | 147.5 |
| | Feb | 71.2 | 77.1 | 109.0 | 159.8 | 97.9 |
| | Mar | 69.9 | 78.0 | 79.5 | 84.6 | 60.8 |
| | Apr | 94.8 | 84.5 | 97.0 | 158.9 | 52.8 |
| | May | 93.4 | 80.5 | 73.6 | 145.9 | 50.4 |
| | Jun | 89.7 | 75.4 | 142.1 | 80.0 | 40.0 |
| | Jul | 105.9 | 74.9 | 203.7 | 145.6 | 42.3 |
| | Aug | 89.6 | 80.3 | 176.4 | 177.8 | 70.3 |
| | Sep | 99.0 | 82.4 | 73.9 | 51.5 | 53.8 |
| | Oct | 86.2 | 65.2 | 94.7 | 32.7 | 56.6 |
| | Nov | 104.4 | 61.2 | 97.9 | 178.6 | 38.3 |
| | Dec | 70.5 | 39.9 | 96.3 | 68.6 | 52.0 |
| 2014 | Jan | 68.6 | 57.1 | 232.7 | 66.3 | 14.9 |
| | Feb | 76.6 | 79.9 | 127.9 | 65.8 | 139.0 |
| | Mar | 75.9 | 54.4 | 107.9 | 86.0 | 44.0 |
| | Apr | 69.2 | 54.3 | 121.7 | 110.5 | 63.9 |
| | May | 63.2 | 63.5 | 161.8 | 138.7 | 45.0 |
| | Jun | 87.5 | 58.3 | 54.0 | 103.8 | 62.6 |
| | Jul | 93.2 | 56.7 | 93.3 | 141.5 | 67.0 |
| | Aug | 78.5 | 49.1 | 245.3 | 66.9 | 52.3 |
| | Sep | 86.4 | 59.0 | 70.9 | 152.0 | 61.6 |
| | Oct | 79.2 | 69.3 | 74.7 | 62.3 | 60.4 |
| | Nov | 72.2 | 51.7 | 175.2 | 123.8 | 48.5 |

Methodology

The information provided is on rail cargo, road cargo and sea cargo which comprises of sea landed, sea shipped and sea trans- shipped and the sources of data is Transnamib for road and rail cargo and Namport for sea cargo.

The reference period for the index is 2010, and as for the overall index weights are used in calculations.