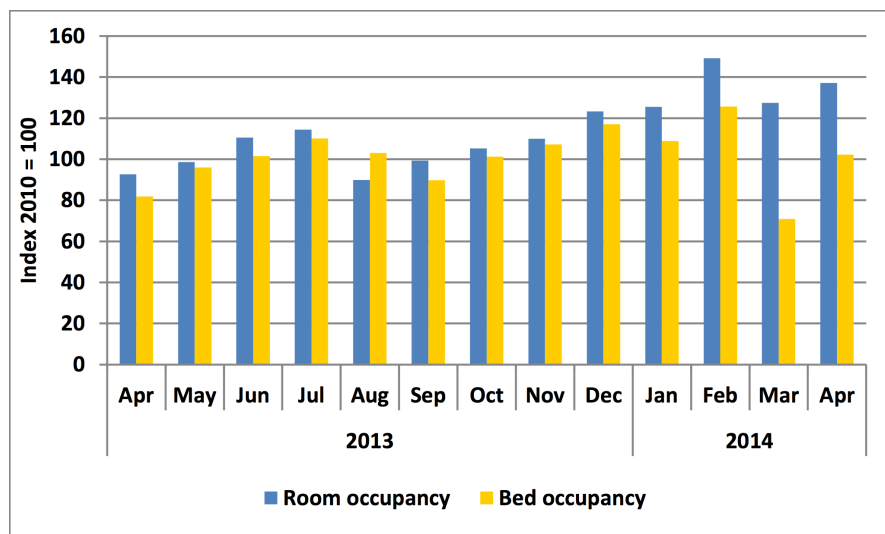




### Chart 1: Bed and Room Occupancy Indices

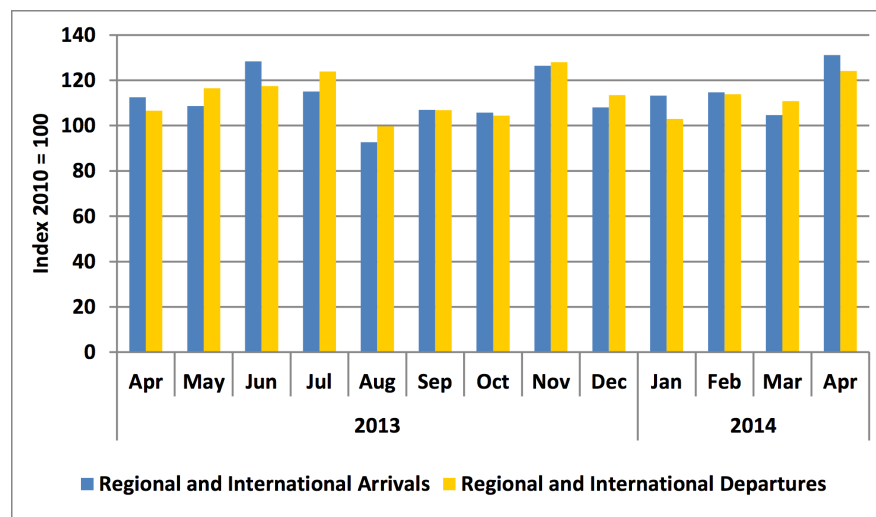


Bed and room occupancy rate indices stood at 102.2 and 137.1, respectively; representing an increase of 25.0 per cent and 48.0 per cent year-on-year, accordingly. Month-on-month, bed and room occupancy rate index increased by 44.3 per cent and 7.6 per cent, respectively.

Bed and room occupancy rate for April stood at 43.2 and 67.3, respectively; representing an increase of 77.1 per cent and 26.8 per cent month-on-month, while year-on-year represent an increase of 25.0 per cent and 48.0 per cent.

The room occupancy rate index for the month of April recorded the second highest index since April 2013, whilst the room occupancy marked the highest rate.

### Chart 2: Regional and International Arrival and Departure Indices



The index both for the regional and international arrivals and departures stood at 131.2 and 124.1; representing an increase of 25.4 per cent and 12.0 per cent month-on-month, and 16.6 per cent and 16.5 per cent year-on-year, respectively.

The arrivals index for April 2014 is the highest mark in the past twelve months, the second highest was in June 2013 with an index of 128.4. In absolute terms, the month of April also marked the highest number of arrivals of regional and international passengers with 36 702 since the beginning of 2014.

The departures index for April is highest since January 2014, with 38 471 regional and international passengers departing Namibia.

*These serves as a proxy to tourism sector, a priority sector under NDP4 and contributes 1.8 per cent to GDP in 2013 compared to 1.6 per cent in 2012.*