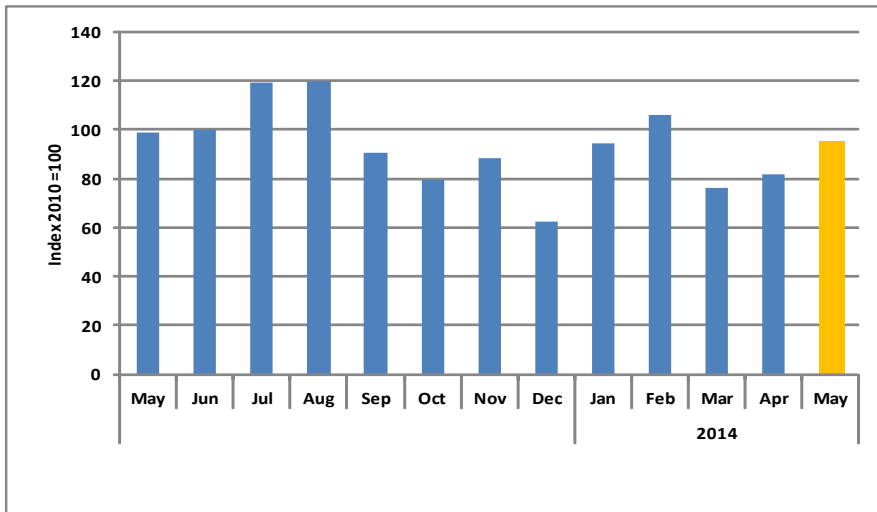




Monthly Transport Report

Chart 1: Composite Transport Index

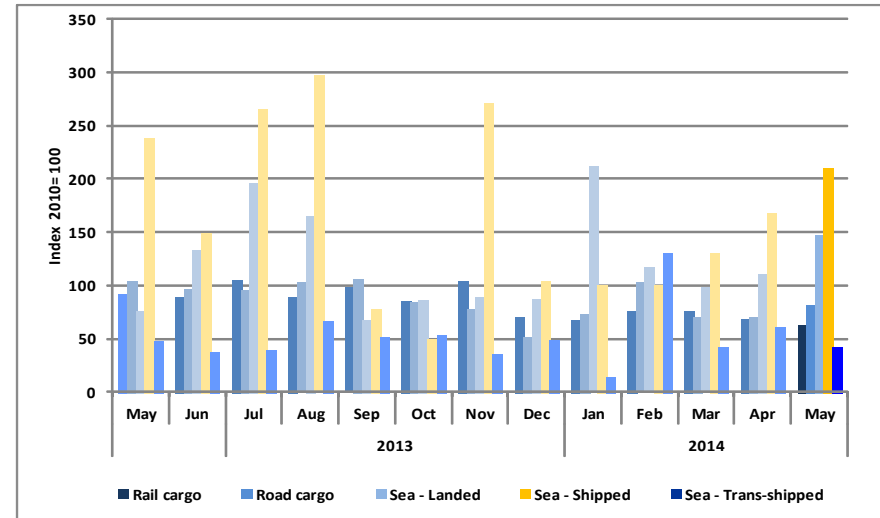


The composite transport sector index stood at 95.3 points in May 2014, down 3 percent from the level recorded in May of the preceding year. However, on a month on month basis the index increased by 16.6 percent

Total cargo handled during the month stood at 696,794 tons, representing an increase of 14.5 percent both on m/m and y/y basis. As such, volumes handled in May were the second highest yet seen in 2014, following a total of 744,494 tons handled in January.

The indices of *Road* and *Sea Cargo* transportation accelerated during the month of May 2014, seeing growth of 16.8 and 20.2 percent, respectively on m/m basis.

Chart 2: Transport Sub-Sectors Index



Cargo shipped continued to lead the sea transport category recording an index level of 211.0 points in May, a decline of 11.4 per cent on y/y, but an increase of 42.9 points on m/m.

The cargo landed index stood at 147.0 points, an increase of 93.9 per cent compared May 2013, and an increase of 36.5 points on a m/m basis.

Despite the positive performance witnessed in some of the transportation categories, *rail transport* and *cargo transhipped* recorded index declines, to 62.7 and 42.0 points, respectively. Y/y, these represent declines of 32.3 and 10.7 points, respectively, and declines of 6.0 and 18.0 points on m/m basis, respectively.

