



Chart 1: Electricity Total Sales Index (2010 = 100)

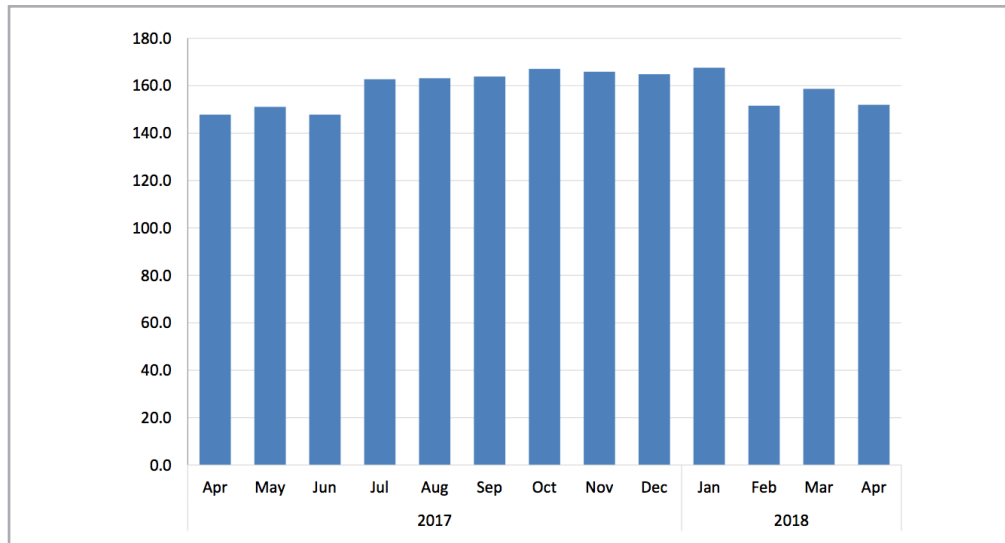
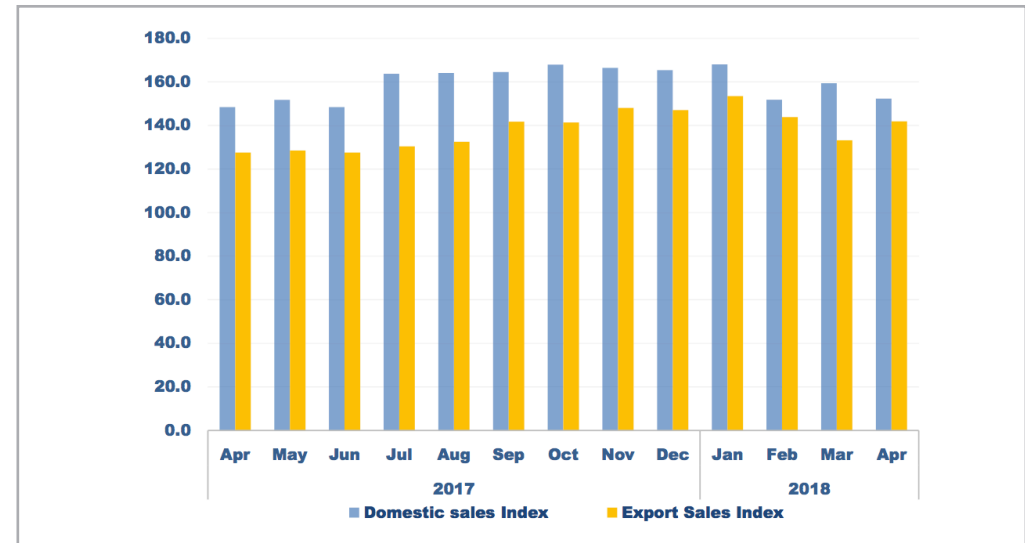


Chart 2: Electricity Sales Subsectors Index (2010 = 100)



- The **Electricity Sales Composite Index (ESCI)** that consists of domestic and export sales stood at 152.0 basis points in April 2018 compared to 158.7 basis points recorded in the preceding month. This represents a decrease of 4.2 percent m/m and an increase of 2.8 percent y/y.
- The **domestic sales sub-index** recorded 152.3 basis points in April 2018 compared to 159.4 basis points recorded in March 2018 (See Chart 2). This shows a decline of 4.5 percent m/m and an increase of 2.6 percent y/y.
- The **export sales sub-index** recorded 141.9 basis points in April 2018 compared to 133.2 basis points registered in March 2018. This represents increases of 6.5 percent m/m and 11.2 percent y/y.
- A **total** of 330 372 MWh of electricity was distributed in the domestic economy during April 2018 whilst only 9 387 MWh was exported during the same period.



Chart 3: Electricity Total Sources Index (2010 = 100)

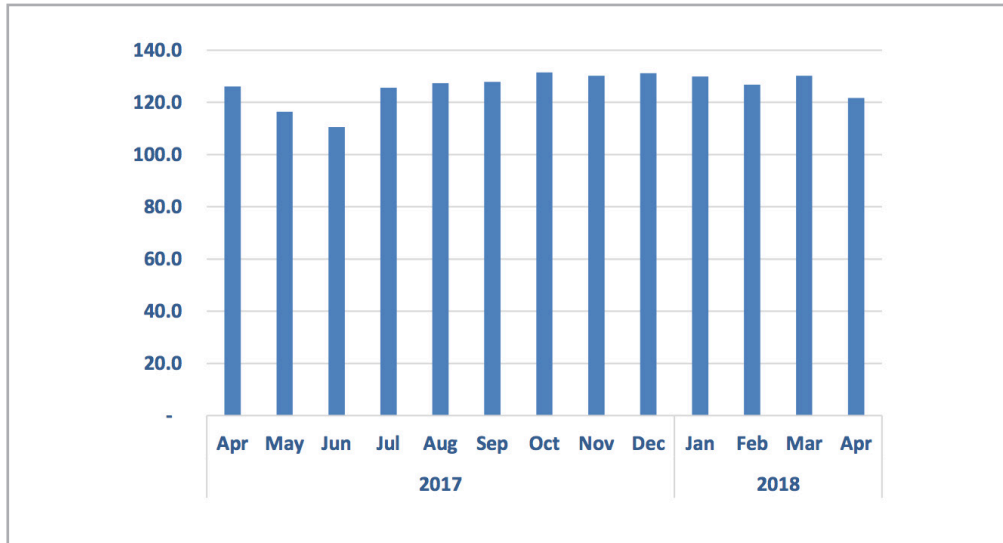
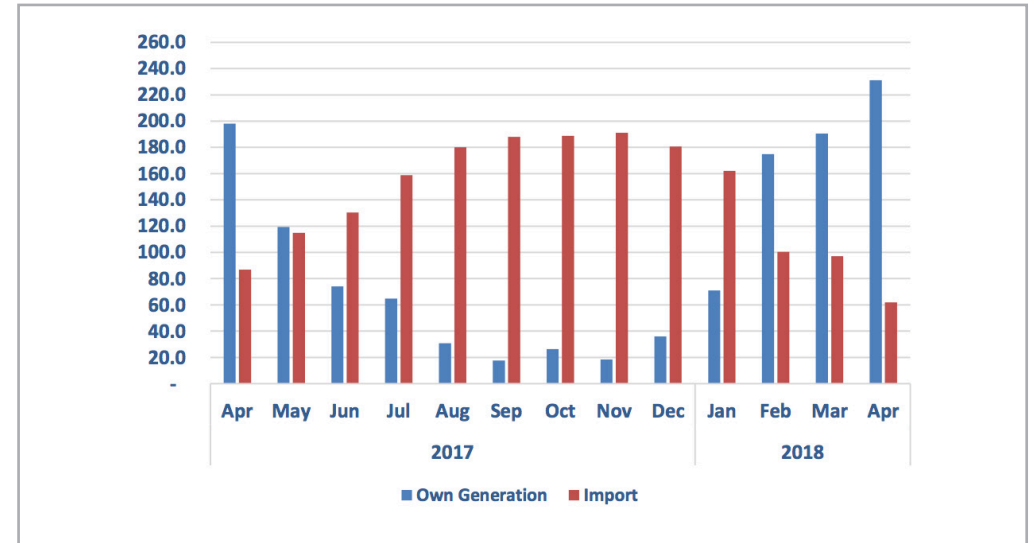


Chart 4: Electricity Sources Subsectors Index (2010 = 100)



The **Electricity Sources Composite Index (ESCI)** that consists of own generated and import sources stood at 121.7 basis points in April 2018 compared to 130.1 basis points recorded for the previous month. This represents declines of 6.5 percent m/m and 3.5 percent y/y.

- The **own generated source** sub-index increased, recording 231.1 basis points in April 2018 compared to 190.5 basis points recorded for March 2018 (See Chart 4). This translates to increases of 21.3 percent m/m and 16.6 percent y/y.

- The **import sources sub-index** recorded 62.0 basis points in April 2018 compared to 97.2 basis points recorded for March 2018. This represents declines of 36.2 percent m/m and 28.6 percent y/y.
- A **total** of 260 294 MWh of electricity was generated in Namibia during April 2018 whilst 127 802 MWh was imported during the same period.



Monthly Electricity Report

Issue 048
27 July 2018

Table 1: Electricity sales subsector in MWh

Year	Month	Domestic sales	Exports
2010	Jan	209,050	6,266
	Feb	199,448	5,930
	Mar	223,412	6,093
	Apr	210,872	6,786
	May	212,520	6,577
	Jun	216,385	6,458
	Jul	223,373	6,668
	Aug	222,042	6,530
	Sep	215,880	6,597
	Oct	224,282	7,300
	Nov	220,976	7,168
	Dec	225,009	7,019
2011	Jan	220,754	6,723
	Feb	209,276	6,094
	Mar	224,987	5,518
	Apr	211,291	4,485
	May	224,720	4,853
	Jun	227,816	6,768
	Jul	241,925	7,382
	Aug	237,336	7,186
	Sep	233,669	6,854
	Oct	240,742	8,653
	Nov	233,689	7,338
	Dec	229,641	7,556
2012	Jan	238,320	7,885
	Feb	226,787	7,269
	Mar	242,209	7,829
	Apr	229,105	7,473
	May	239,032	7,832
	Jun	245,163	7,339
	Jul	255,169	7,282
	Aug	248,953	7,551
	Sep	242,637	7,340
	Oct	255,556	7,651
	Nov	255,349	7,364
	Dec	241,860	5,348
2013	Jan	252,370	7,819
	Feb	240,016	7,847
	Mar	254,075	7,680
	Apr	247,225	7,444
	May	246,908	6,311
	Jun	245,297	6,908
	July	257,875	6,416
	Aug	252,068	7,083
	Sept	249,489	7,117
	Oct	260,609	7,222
	Nov	261,928	6,673
	Dec	237,401	7,027
2014	Jan	241 755	7 267
	Feb	243 913	6 988
	Mar	257 198	6 988
	Apr	254 657	3 528
	May	254 651	3 126
	Jun	256 963	3 339
	Jul	265 930	3 151
	Aug	257 104	3 391
	Sep	259 670	3 534
	Oct	272 475	3 513
	Nov	272 649	3 337
	Dec	254 873	7 559
2015	Jan	273 548	8 051
	Feb	244 280	7 329
	Mar	275 447	8 051
	Apr	258 836	7 086
	May	266 261	6 476
	Jun	272 395	6 853
	Jul	278 331	6 930
	Aug	275 082	7 515
	Sep	266 705	8 261
	Oct	308 507	9 122
	Nov	317 226	8 812
	Dec	386 755	8 876
2016	Jan	235 943	8 614
	Feb	329 678	8 465
	Mar	340 141	8 209
	Apr	332 054	8 190
	May	360 693	7 646
	Jun	319 637	8 142
	Jul	328 472	8 405
	Aug	340 658	7 709
	Sep	338 117	8 087
	Oct	355 265	8 555
	Nov	350 664	8 844
	Dec	350 587	8 221
2017	Jan	347 882	8 127
	Feb	309 404	7 741
	Mar	372 168	8 660
	Apr	321 999	8 440
	May	329 224	8 502
	Jun	321 999	8 440
	Jul	355 164	8 629
	Aug	355 952	8 766
	Sep	356 907	9 379
	Oct	364 259	9 356
	Nov	361 064	9 794
	Dec	358 817	9 728
2018	Jan	364 558	10 153
	Feb	329 357	9 518
	Mar	345 885	8 811
	Apr	330 372	9 387



Monthly Electricity Report

Issue 048
27 July 2018

Table 2: Total subsector electricity index (2010=100)

Year	Month	Domestic sales Index	Exports Index	Total Sales Index
2010	Jan	96.4	94.7	96.3
	Feb	91.9	89.6	91.9
	Mar	103.0	92.1	102.7
	Apr	97.2	102.6	97.4
	May	98.0	99.4	98.0
	Jun	99.7	97.6	99.7
	Jul	103.0	100.8	102.9
	Aug	102.4	98.7	102.2
	Sep	99.5	99.7	99.5
	Oct	103.4	110.3	103.6
	Nov	101.9	108.3	102.1
	Dec	103.7	106.1	103.8
2011	Jan	101.8	101.6	101.8
	Feb	96.5	92.1	96.3
	Mar	103.7	83.4	103.1
	Apr	97.4	67.8	96.5
	May	103.6	73.4	102.7
	Jun	105.0	102.3	104.9
	Jul	111.5	111.6	111.5
	Aug	109.4	108.6	109.4
	Sep	107.7	103.6	107.6
	Oct	111.0	130.8	111.6
	Nov	107.7	110.9	107.8
	Dec	105.9	114.2	106.1
2012	Jan	109.9	119.2	110.1
	Feb	104.5	109.9	104.7
	Mar	111.6	118.3	111.8
	Apr	105.6	113.0	105.8
	May	110.2	118.4	110.4
	Jun	113.0	110.9	112.9
	Jul	117.6	110.1	117.4
	Aug	114.8	114.1	114.7
	Sep	111.8	110.9	111.8
	Oct	117.8	115.6	117.7
	Nov	117.7	111.3	117.5
	Dec	111.5	80.8	110.6
2013	Jan	116.3	118.2	116.4
	Feb	110.6	118.6	110.9
	Mar	117.1	116.1	117.1
	Apr	114.0	112.5	113.9
	May	113.8	95.4	113.3
	Jun	113.1	104.4	112.8
	July	118.9	97.0	118.2
	Aug	116.2	107.1	115.9
	Sept	115.0	107.6	114.8
	Oct	120.1	109.2	119.8
	Nov	120.7	100.9	120.2
	Dec	109.4	106.2	109.3

Year	Month	Domestic sales Index	Exports Index	Total Sales Index
2014	Jan	111.4	109.8	111.4
	Feb	112.4	105.6	112.2
	Mar	118.6	105.6	118.2
	Apr	117.4	53.3	115.5
	May	117.4	47.2	115.3
	Jun	118.5	50.5	116.4
	Jul	122.6	47.6	120.4
	Aug	118.5	51.3	116.5
	Sep	119.7	53.4	117.7
	Oct	125.6	53.1	123.5
	Nov	125.7	50.4	123.5
	Dec	117.5	114.3	117.4
2015	Jan	126.1	121.7	126.0
	Feb	112.6	110.8	112.5
	Mar	127.0	121.7	126.8
	Apr	119.3	107.1	119.0
	May	122.7	97.9	122.0
	June	125.6	103.6	124.9
	Jul	128.3	104.7	127.6
	Aug	126.8	113.6	126.4
	Sep	122.9	124.9	123.0
	Oct	142.2	137.9	142.1
	Nov	146.2	133.2	145.8
	Dec	178.3	134.2	177.0
2016	Jan	108.8	130.2	109.4
	Feb	152.0	128.0	151.3
	Mar	156.8	124.1	155.8
	Apr	153.1	123.8	152.2
	May	166.3	115.6	164.8
	Jun	147.3	123.1	146.6
	Jul	151.4	127.0	150.7
	Aug	157.0	116.5	155.8
	Sep	155.9	122.2	154.9
	Oct	163.8	129.3	162.7
	Nov	161.6	133.7	160.8
	Dec	161.6	124.3	160.5
2017	Jan	160.4	122.8	159.3
	Feb	142.6	117.0	141.9
	Mar	171.6	130.9	170.4
	Apr	148.4	127.6	147.8
	May	151.8	128.5	151.1
	June	148.4	127.6	147.8
	Jul	163.7	130.4	162.7
	Aug	164.1	132.5	163.1
	Sep	164.5	141.8	163.8
	Oct	167.9	141.4	167.1
	Nov	166.4	148.0	165.9
	Dec	165.4	147.0	164.9
2018	Jan	168.0	153.5	167.6
	Feb	151.8	143.9	151.6
	Mar	159.4	133.2	158.7
	Apr	152.3	141.9	152.0



Monthly Electricity Report

Issue 048
27 July 2018

Table 3: Electricity sources subsector in MWh

Year	Month	Own generated	Import
2010	Jan	140 644	170 135
	Feb	142 680	150 060
	Mar	178 638	151 972
	Apr	173 468	139 471
	May	178 156	139 442
	Jun	148 632	174 819
	Jul	97 670	225 031
	Aug	72 090	249 267
	Sep	40 591	274 406
	Oct	27 817	299 253
	Nov	20 446	300 328
	Dec	130 795	200 847
2011	Jan	179 164	151 325
	Feb	162 476	142 391
	Mar	178 048	164 230
	Apr	172 703	142 254
	May	176 917	150 988
	Jun	169 554	164 192
	Jul	124 571	223 981
	Aug	118 103	224 347
	Sep	77 751	254 100
	Oct	4 2 346	307 624
	Nov	53 511	282 511
	Dec	151 806	180 962
2012	Jan	157 208	164 502
	Feb	166 661	1 59 444
	Mar	229 125	1 40 437
	Apr	235 433	120 761
	May	155 836	189 724
	Jun	98 948	253 287
	Jul	74 187	2 86 481
	Aug	71 051	286 376
	Sep	67 074	279 955
	Oct	65 758	2 94 002
	Nov	55 820	278 314
	Dec	142 163	198 319
2013	Jan	167 462	195 583
	Feb	125 756	2 04 038
	Mar	167 472	206 633
	Apr	211 960	144 284
	May	104 421	2 46 184
	Jun	76 007	2 74 746
	July	72 474	2 84 626
	Aug	64 967	293 024
	Sept	63 001	288 570
	Oct	53 014	3 14 523
	Nov	55 559	293 075
	Dec	176 914	170 331

Year	Month	Own generated	Import
2014	Jan	145 842	198 645
	Feb	115 363	198 001
	Mar	184 214	141 568
	Apr	237 021	105 445
	May	210 882	196 032
	Jun	118 989	242 204
	Jul	99 737	263 470
	Aug	92 585	266 068
	Sep	76 471	275 901
	Oct	67 229	301 895
	Nov	57 226	296 399
	Dec	209 267	216 303
2015	Jan	166 465	184 477
	Feb	149 796	178 355
	Mar	175 681	199 340
	Apr	212 911	169 782
	May	125 127	240 258
	Jun	87 582	269 882
	Jul	72 589	295 327
	Aug	71 478	297 025
	Sep	6 4 753	122 673
	Oct	52 155	302 342
	Nov	64 708	295 293
	Dec	82 584	304 172
2016	Jan	189 959	235 943
	Feb	179 873	194 909
	Mar	190 795	348 351
	Apr	182 267	197 959
	May	1 6 273	199 437
	Jun	1 08 304	256 083
	Jul	9 7 040	275 631
	Aug	97 386	278 153
	Sep	66 601	312 590
	Oct	66 875	316 925
	Nov	83 487	311 182
	Dec	171 237	226 916
2017	Jan	232 502	169 601
	Feb	185 610	167 716
	Mar	259 472	160 430
	Apr	223 170	178 971
	May	134 392	236 814
	Jun	8 3 410	269 000
	Jul	72 916	327 542
	Aug	34 542	3 71 617
	Sep	19 885	387 666
	Oct	29 702	3 89 450
	Nov	20 651	394 322
	Dec	40 532	372 611
2018	Jan	7 9 862	334 179
	Feb	197 034	207 219
	Mar	214 593	200 423
	Apr	260 294	127 802



Monthly Electricity Report

Issue 048
27 July 2018

Table 4: Total subsector electricity index (2010=100)

Year	Month	Own generated Index	Import Index	Total Electricity in Namibia Index	Year	Month	Own generated Index	Import Index	Total Electricity in Namibia Index
2010	Jan	124.9	8 2.5	97.5	2014	Jan	129.5	96.3	108.0
	Feb	126.7	7 2.8	91.8		Feb	102.4	96.0	98.3
	Mar	-	7 3.7	47.7		Mar	163.5	68.6	102.2
	Apr	154.0	6 7.6	98.1		Apr	210.4	51.1	107.4
	May	158.2	6 7.6	99.6		May	187.2	95.0	127.6
	Jun	132.0	8 4.8	101.4		Jun	105.6	1 17.4	113.3
	Jul	86.7	109.1	101.2		Jul	88.5	127.7	113.9
	Aug	64.0	120.9	1 00.8		Aug	82.2	1 29.0	112.5
	Sep	3 6.0	133.0	98.8		Sep	6 7.9	1 33.8	110.5
	Oct	2 4.7	145.1	1 02.6		Oct	59.7	146.4	115.8
	Nov	18.2	145.6	1 00.6		Nov	50.8	143.7	110.9
	Dec	116.1	97.4	104.0		Dec	185.8	1 04.9	133.5
2011	Jan	159.1	73.4	1 03.6	Jan	147.8	89.4	110.1	
	Feb	144.2	6 9.0	95.6	Feb	133.0	86.5	102.9	
	Mar	158.1	7 9.6	107.3	Mar	156.0	96.6	117.6	
	Apr	153.3	69.0	98.8	Apr	189.0	82.3	120.0	
	May	157.1	73.2	102.8	May	111.1	116.5	114.6	
	Jun	150.5	79.6	104.7	June	77.8	130.9	112.1	
	Jul	110.6	108.6	109.3	Jul	6 4.4	143.2	115.4	
	Aug	104.9	108.8	107.4	Aug	63.5	144.0	115.6	
	Sep	69.0	123.2	1 04.1	Sep	5 7.5	59.5	58.8	
	Oct	37.6	149.1	109.7	Oct	4 6.3	146.6	111.2	
	Nov	4 7.5	137.0	1 05.4	Nov	5 7.4	143.2	112.9	
	Dec	134.8	87.7	104.4	Dec	7 3.3	147.5	121.3	
2012	Jan	139.6	79.8	1 00.9	Jan	168.6	1 14.4	133.6	
	Feb	148.0	7 7.3	1 02.3	Feb	159.7	94.5	117.5	
	Mar	203.4	6 8.1	1 15.9	Mar	169.4	1 68.9	169.1	
	Apr	209.0	58.5	111.7	Apr	161.8	96.0	119.2	
	May	138.4	92.0	108.4	May	1 4.4	96.7	67.6	
	Jun	8 7.8	122.8	1 10.5	Jun	9 6.2	1 24.2	114.3	
	Jul	6 5.9	138.9	1 13.1	Jul	8 6.2	133.6	116.9	
	Aug	63.1	138.8	112.1	Aug	8 6.5	1 34.9	117.8	
	Sep	59.5	135.7	108.8	Sep	59.1	1 51.6	118.9	
	Oct	5 8.4	142.5	112.8	Oct	59.4	1 53.7	120.4	
	Nov	49.6	134.9	1 04.8	Nov	74.1	1 50.9	123.8	
	Dec	126.2	9 6.2	1 06.8	Dec	152.0	1 10.0	124.9	
2013	Jan	148.7	9 4.8	1 13.8	Jan	206.4	82.2	126.1	
	Feb	111.6	98.9	103.4	Feb	164.8	81.3	110.8	
	Mar	148.7	100.2	117.3	Mar	230.4	77.8	131.7	
	Apr	188.2	7 0.0	1 11.7	Apr	198.1	86.8	126.1	
	May	9 2.7	119.4	109.9	May	119.3	1 14.8	116.4	
	Jun	6 7.5	133.2	1 10.0	June	7 4.1	130.4	110.5	
	Jul	6 4.3	138.0	1 12.0	Jul	6 4.7	1 58.8	125.6	
	Aug	57.7	142.1	112.3	Aug	30.7	180.2	127.4	
	Sept	55.9	139.9	1 10.2	Sep	1 7.7	1 88.0	127.8	
	Oct	4 7.1	152.5	1 15.3	Oct	26.4	188.8	131.4	
	Nov	49.3	142.1	1 09.3	Nov	18.3	191.2	130.1	
	Dec	157.1	82.6	108.9	Dec	36.0	180.7	129.6	
2018	Jan				Jan	7 0.9	1 62.0	129.8	
	Feb				Feb	174.9	1 00.5	126.8	
	Mar				Mar	190.5	97.2	130.1	
	Apr				Apr	231.1	62.0	121.7	



Methodology

Background: Domestic electricity Sales, exports data and Sources is weighted to calculate the overall index.

Data sources: NamPower

Base year: 2010