



Chart 1: Electricity Total Sales Index (2010 = 100)

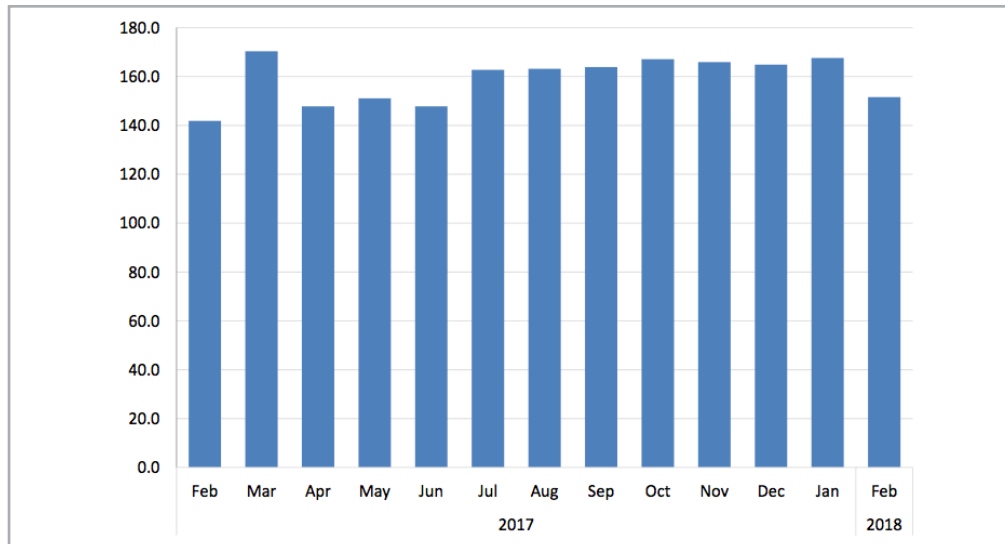
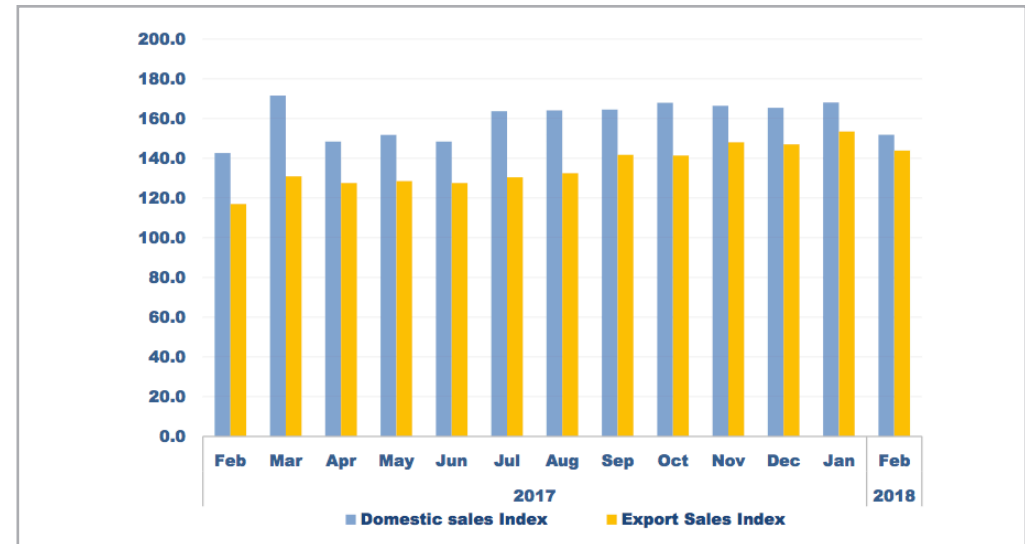


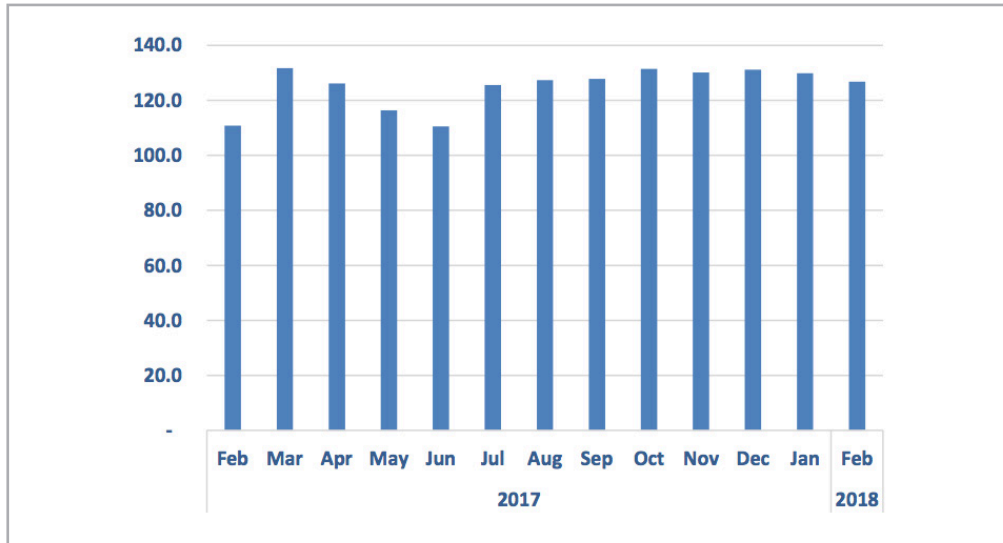
Chart 2: Electricity Sales Subsectors Index (2010 = 100)



- The **Electricity Sales Composite Index (ESCI)** that consists of domestic and export sales stood at 151.6 basis points in February 2018 compared to 167.6 basis points recorded in the preceding month. This represents a decrease of 9.6 percent m/m and increase of 6.9 percent y/y.
- The **domestic sales sub-index** recorded 151.8 basis points in February 2018 compared to 168.0 basis points recorded in January 2018 (See Chart 2). This shows a decrease of 9.7 percent m/m and increase of 6.4 percent y/y.
- The **export sales sub-index** recorded 143.9 basis points in February 2018 compared to 153.5 basis points registered in January 2018. This represents a decrease of 6.3 percent m/m and increase of 23.0 percent y/y.
- A **total** of 329 357 MWh of electricity was distributed in the domestic economy during February 2018 whilst only 9 518 MWh was exported during the same period.



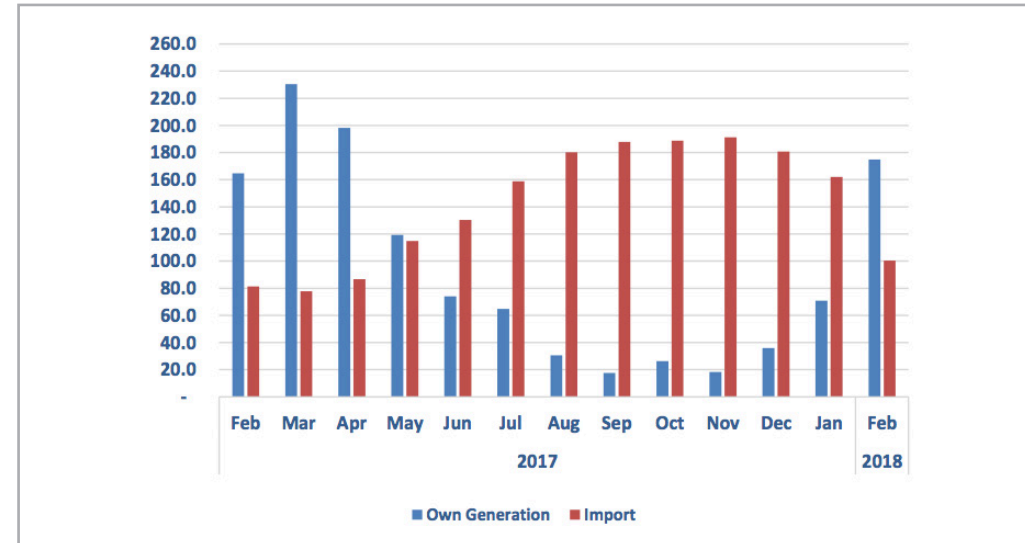
Chart 3: Electricity Total Sources Index (2010 = 100)



The **Electricity Sources Composite Index (ESCI)** that consists of own generated and import sources stood at 126.8 basis points in February 2018 compared to 129.8 basis points recorded for the previous month. This represents decreases of 2.4 percent m/m and increase of 14.4 percent y/y.

- The **own generated source** sub-index increased, recording 174.9 basis points in February 2018 compared to 70.9 basis points recorded for January 2018 (See Chart 4). This translates to an increase of 146.7 percent m/m and 6.2 percent y/y.

Chart 4: Electricity Sources Subsectors Index (2010 = 100)



- The **import sources sub-index** recorded 100.5 basis points in February 2018 compared to 162.0 basis points recorded for January 2018. This represents a decrease of 38.0 percent m/m and an increase of 23.6 percent y/y.
- A **total** of 197 034 MWh of electricity was generated in Namibia during February 2018 whilst 207 219 MWh was imported during the same period.



Monthly Electricity Report

Issue 046
25 June 2018

Table 1: Electricity sales subsector in MWh

Year	Month	Domestic sales	Exports	Year	Month	Domestic sales	Exports
2010	Jan	209,050	6,266	2014	Jan	2 41 755	7 267
	Feb	199,448	5,930		Feb	243 913	6 988
	Mar	223,412	6,093		Mar	2 57 198	6 988
	Apr	210,872	6,786		Apr	254 657	3 528
	May	212,520	6,577		May	2 54 651	3 126
	Jun	216,385	6,458		Jun	2 56 963	3 339
	Jul	223,373	6,668		Jul	2 65 930	3 151
	Aug	222,042	6,530		Aug	257 104	3 391
	Sep	215,880	6,597		Sep	2 59 670	3 534
	Oct	224,282	7,300		Oct	2 72 475	3 513
	Nov	220,976	7,168		Nov	272 649	3 337
	Dec	225,009	7,019		Dec	254 873	7 559
2011	Jan	220,754	6,723	Jan	2 73 548	8 051	
	Feb	209,276	6,094	Feb	244 280	7 329	
	Mar	224,987	5,518	Mar	275 447	8 051	
	Apr	211,291	4,485	Apr	258 836	7 086	
	May	224,720	4,853	May	2 66 261	6 476	
	Jun	227,816	6,768	Jun	272 395	6 853	
	Jul	241,925	7,382	Jul	2 78 331	6 930	
	Aug	237,336	7,186	Aug	2 75 082	7 515	
	Sep	233,669	6,854	Sep	266 705	8 261	
	Oct	240,742	8,653	Oct	308 507	9 122	
	Nov	233,689	7,338	Nov	317 226	8 812	
	Dec	229,641	7,556	Dec	3 86 755	8 876	
2012	Jan	238,320	7,885	Jan	235 943	8 614	
	Feb	226,787	7,269	Feb	329 678	8 465	
	Mar	242,209	7,829	Mar	3 40 141	8 209	
	Apr	229,105	7,473	Apr	332 054	8 190	
	May	239,032	7,832	May	3 60 693	7 646	
	Jun	245,163	7,339	Jun	319 637	8 142	
	Jul	255,169	7,282	Jul	328 472	8 405	
	Aug	248,953	7,551	Aug	3 40 658	7 709	
	Sep	242,637	7,340	Sep	338 117	8 087	
	Oct	255,556	7,651	Oct	3 55 265	8 555	
	Nov	255,349	7,364	Nov	350 664	8 844	
	Dec	241,860	5,348	Dec	350 587	8 221	
2013	Jan	252,370	7,819	Jan	3 47 882	8 127	
	Feb	240,016	7,847	Feb	3 09 404	7 741	
	Mar	254,075	7,680	Mar	3 72 168	8 660	
	Apr	247,225	7,444	Apr	321 999	8 440	
	May	246,908	6,311	May	3 29 224	8 502	
	Jun	245,297	6,908	Jun	321 999	8 440	
	July	257,875	6,416	Jul	355 164	8 629	
	Aug	252,068	7,083	Aug	355 952	8 766	
	Sept	249,489	7,117	Sep	356 907	9 379	
	Oct	260,609	7,222	Oct	3 64 259	9 356	
	Nov	261,928	6,673	Nov	3 61 064	9 794	
	Dec	237,401	7,027	Dec	358 817	9 728	
2018	Jan			Jan	3 64 558	10 153	
	Feb			Feb	3 29 357	9 518	



Monthly Electricity Report

Issue 046
25 June 2018

Table 2: Total subsector electricity index (2010=100)

Year	Month	Domestic sales Index	Exports Index	Total Sales Index
2010	Jan	96.4	94.7	96.3
	Feb	91.9	89.6	91.9
	Mar	103.0	92.1	102.7
	Apr	97.2	102.6	97.4
	May	98.0	99.4	98.0
	Jun	99.7	97.6	99.7
	Jul	103.0	100.8	102.9
	Aug	102.4	98.7	102.2
	Sep	99.5	99.7	99.5
	Oct	103.4	110.3	103.6
	Nov	101.9	108.3	102.1
	Dec	103.7	106.1	103.8
2011	Jan	101.8	101.6	101.8
	Feb	96.5	92.1	96.3
	Mar	103.7	83.4	103.1
	Apr	97.4	67.8	96.5
	May	103.6	73.4	102.7
	Jun	105.0	102.3	104.9
	Jul	111.5	111.6	111.5
	Aug	109.4	108.6	109.4
	Sep	107.7	103.6	107.6
	Oct	111.0	130.8	111.6
	Nov	107.7	110.9	107.8
	Dec	105.9	114.2	106.1
2012	Jan	109.9	119.2	110.1
	Feb	104.5	109.9	104.7
	Mar	111.6	118.3	111.8
	Apr	105.6	113.0	105.8
	May	110.2	118.4	110.4
	Jun	113.0	110.9	112.9
	Jul	117.6	110.1	117.4
	Aug	114.8	114.1	114.7
	Sep	111.8	110.9	111.8
	Oct	117.8	115.6	117.7
	Nov	117.7	111.3	117.5
	Dec	111.5	80.8	110.6
2013	Jan	116.3	118.2	116.4
	Feb	110.6	118.6	110.9
	Mar	117.1	116.1	117.1
	Apr	114.0	112.5	113.9
	May	113.8	95.4	113.3
	Jun	113.1	104.4	112.8
	July	118.9	97.0	118.2
	Aug	116.2	107.1	115.9
	Sept	115.0	107.6	114.8
	Oct	120.1	109.2	119.8
	Nov	120.7	100.9	120.2
	Dec	109.4	106.2	109.3

Year	Month	Domestic sales Index	Exports Index	Total Sales Index
2014	Jan	111.4	109.8	111.4
	Feb	112.4	105.6	112.2
	Mar	118.6	105.6	118.2
	Apr	117.4	53.3	115.5
	May	117.4	47.2	115.3
	Jun	118.5	50.5	116.4
	Jul	122.6	47.6	120.4
	Aug	118.5	51.3	116.5
	Sep	119.7	53.4	117.7
	Oct	125.6	53.1	123.5
	Nov	125.7	50.4	123.5
	Dec	117.5	114.3	117.4
2015	Jan	126.1	121.7	126.0
	Feb	112.6	110.8	112.5
	Mar	127.0	121.7	126.8
	Apr	119.3	107.1	119.0
	May	122.7	97.9	122.0
	June	125.6	103.6	124.9
	Jul	128.3	104.7	127.6
	Aug	126.8	113.6	126.4
	Sep	122.9	124.9	123.0
	Oct	142.2	137.9	142.1
	Nov	146.2	133.2	145.8
	Dec	178.3	134.2	177.0
2016	Jan	108.8	130.2	109.4
	Feb	152.0	128.0	151.3
	Mar	156.8	124.1	155.8
	Apr	153.1	123.8	152.2
	May	166.3	115.6	164.8
	Jun	147.3	123.1	146.6
	Jul	151.4	127.0	150.7
	Aug	157.0	116.5	155.8
	Sep	155.9	122.2	154.9
	Oct	163.8	129.3	162.7
	Nov	161.6	133.7	160.8
	Dec	161.6	124.3	160.5
2017	Jan	160.4	122.8	159.3
	Feb	142.6	117.0	141.9
	Mar	171.6	130.9	170.4
	Apr	148.4	127.6	147.8
	May	151.8	128.5	151.1
	June	148.4	127.6	147.8
	Jul	163.7	130.4	162.7
	Aug	164.1	132.5	163.1
	Sep	164.5	141.8	163.8
	Oct	167.9	141.4	167.1
	Nov	166.4	148.0	165.9
	Dec	165.4	147.0	164.9
2018	Jan	168.0	153.5	167.6
	Feb	151.8	143.9	151.6



Monthly Electricity Report

Issue 046
25 June 2018

Table 3: Electricity sources subsector in MWh

Year	Month	Own generated	Import
2010	Jan	1 40 644	170 135
	Feb	1 42 680	150 060
	Mar	1 78 638	151 972
	Apr	1 73 468	139 471
	May	1 78 156	139 442
	Jun	148 632	174 819
	Jul	97 670	225 031
	Aug	7 2 090	249 267
	Sep	40 591	274 406
	Oct	2 7 817	299 253
	Nov	20 446	300 328
	Dec	130 795	200 847
2011	Jan	179 164	151 325
	Feb	162 476	142 391
	Mar	178 048	164 230
	Apr	172 703	142 254
	May	176 917	150 988
	Jun	1 69 554	164 192
	Jul	1 24 571	223 981
	Aug	118 103	224 347
	Sep	77 751	254 100
	Oct	42 346	307 624
	Nov	5 3 511	282 511
	Dec	1 51 806	180 962
2012	Jan	157 208	164 502
	Feb	166 661	159 444
	Mar	2 29 125	1 40 437
	Apr	2 35 433	1 20 761
	May	155 836	1 89 724
	Jun	9 8 948	2 53 287
	Jul	7 4 187	2 86 481
	Aug	7 1 051	2 86 376
	Sep	6 7 074	2 79 955
	Oct	6 5 758	294 002
	Nov	5 5 820	2 78 314
	Dec	1 42 163	1 98 319
2013	Jan	167 462	1 95 583
	Feb	125 756	204 038
	Mar	1 67 472	2 06 633
	Apr	211 960	1 44 284
	May	104 421	2 46 184
	Jun	76 007	2 74 746
	July	72 474	2 84 626
	Aug	6 4 967	293 024
	Sept	6 3 001	288 570
	Oct	5 3 014	3 14 523
	Nov	55 559	293 075
	Dec	176 914	170 331

Year	Month	Own generated	Import
2014	Jan	1 45 842	1 98 645
	Feb	1 15 363	1 98 001
	Mar	1 84 214	1 41 568
	Apr	237 021	105 445
	May	2 10 882	1 96 032
	Jun	1 18 989	2 42 204
	Jul	99 737	2 63 470
	Aug	9 2 585	2 66 068
	Sep	76 471	275 901
	Oct	67 229	301 895
	Nov	5 7 226	2 96 399
	Dec	209 267	216 303
2015	Jan	166 465	1 84 477
	Feb	149 796	178 355
	Mar	1 75 681	199 340
	Apr	2 12 911	169 782
	May	125 127	240 258
	Jun	87 582	269 882
	Jul	7 2 589	2 95 327
	Aug	71 478	2 97 025
	Sep	64 753	122 673
	Oct	52 155	302 342
	Nov	6 4 708	2 95 293
	Dec	82 584	304 172
2016	Jan	189 959	235 943
	Feb	179 873	194 909
	Mar	1 90 795	3 48 351
	Apr	1 82 267	1 97 959
	May	16 273	1 99 437
	Jun	1 08 304	256 083
	Jul	9 7 040	275 631
	Aug	97 386	2 78 153
	Sep	66 601	312 590
	Oct	6 6 875	316 925
	Nov	8 3 487	3 11 182
	Dec	1 71 237	2 26 916
2017	Jan	2 32 502	1 69 601
	Feb	185 610	1 67 716
	Mar	2 59 472	160 430
	Apr	223 170	1 78 971
	May	134 392	236 814
	Jun	83 410	269 000
	Jul	72 916	3 27 542
	Aug	34 542	3 71 617
	Sep	1 9 885	387 666
	Oct	29 702	389 450
	Nov	2 0 651	3 94 322
	Dec	4 0 532	372 611
2018	Jan	79 862	3 34 179
	Feb	1 97 034	207 219



Monthly Electricity Report

Issue 046
25 June 2018

Table 4: Total subsector electricity index (2010=100)

Year	Month	Own generated Index	Import Index	Total Electricity in Namibia Index
2010	Jan	124.9	82.5	97.5
	Feb	126.7	72.8	91.8
	Mar	-	73.7	47.7
	Apr	154.0	67.6	98.1
	May	158.2	67.6	99.6
	Jun	132.0	84.8	101.4
	Jul	86.7	109.1	101.2
	Aug	64.0	120.9	100.8
	Sep	36.0	133.0	98.8
	Oct	24.7	145.1	102.6
	Nov	18.2	145.6	100.6
	Dec	116.1	97.4	104.0
2011	Jan	159.1	73.4	103.6
	Feb	144.2	69.0	95.6
	Mar	158.1	79.6	107.3
	Apr	153.3	69.0	98.8
	May	157.1	73.2	102.8
	Jun	150.5	79.6	104.7
	Jul	110.6	108.6	109.3
	Aug	104.9	108.8	107.4
	Sep	69.0	123.2	104.1
	Oct	37.6	149.1	109.7
	Nov	47.5	137.0	105.4
	Dec	134.8	87.7	104.4
2012	Jan	139.6	79.8	100.9
	Feb	148.0	77.3	102.3
	Mar	203.4	68.1	115.9
	Apr	209.0	58.5	111.7
	May	138.4	92.0	108.4
	Jun	87.8	122.8	110.5
	Jul	65.9	138.9	113.1
	Aug	63.1	138.8	112.1
	Sep	59.5	135.7	108.8
	Oct	58.4	142.5	112.8
	Nov	49.6	134.9	104.8
	Dec	126.2	96.2	106.8
2013	Jan	148.7	94.8	113.8
	Feb	111.6	98.9	103.4
	Mar	148.7	100.2	117.3
	Apr	188.2	70.0	111.7
	May	92.7	119.4	109.9
	Jun	67.5	133.2	110.0
	Jul	64.3	138.0	112.0
	Aug	57.7	142.1	112.3
	Sept	55.9	139.9	110.2
	Oct	47.1	152.5	115.3
	Nov	49.3	142.1	109.3
	Dec	157.1	82.6	108.9

Year	Month	Own generated Index	Import Index	Total Electricity in Namibia Index
2014	Jan	129.5	96.3	108.0
	Feb	102.4	96.0	98.3
	Mar	163.5	68.6	102.2
	Apr	210.4	51.1	107.4
	May	187.2	95.0	127.6
	Jun	105.6	117.4	113.3
	Jul	88.5	127.7	113.9
	Aug	82.2	129.0	112.5
	Sep	67.9	133.8	110.5
	Oct	59.7	146.4	115.8
	Nov	50.8	143.7	110.9
	Dec	185.8	104.9	133.5
2015	Jan	147.8	89.4	110.1
	Feb	133.0	86.5	102.9
	Mar	156.0	96.6	117.6
	Apr	189.0	82.3	120.0
	May	111.1	116.5	114.6
	June	77.8	130.9	112.1
	Jul	64.4	143.2	115.4
	Aug	63.5	144.0	115.6
	Sep	57.5	59.5	58.8
	Oct	46.3	146.6	111.2
	Nov	57.4	143.2	112.9
	Dec	73.3	147.5	121.3
2016	Jan	168.6	114.4	133.6
	Feb	159.7	94.5	117.5
	Mar	169.4	168.9	169.1
	Apr	161.8	96.0	119.2
	May	14.4	96.7	67.6
	Jun	96.2	124.2	114.3
	Jul	86.2	133.6	116.9
	Aug	86.5	134.9	117.8
	Sep	59.1	151.6	118.9
	Oct	59.4	153.7	120.4
	Nov	74.1	150.9	123.8
	Dec	152.0	110.0	124.9
2017	Jan	206.4	82.2	126.1
	Feb	164.8	81.3	110.8
	Mar	230.4	77.8	131.7
	Apr	198.1	86.8	126.1
	May	119.3	114.8	116.4
	June	74.1	130.4	110.5
	Jul	64.7	158.8	125.6
	Aug	30.7	180.2	127.4
	Sep	17.7	188.0	127.8
	Oct	26.4	188.8	131.4
	Nov	18.3	191.2	130.1
	Dec	36.0	180.7	129.6
2018	Jan	70.9	162.0	129.8
	Feb	174.9	100.5	126.8



Methodology

Background: Domestic electricity Sales, exports data and Sources is weighted to calculate the overall index.

Data Sources: NamPower

Base year: 2010