



Chart 1: Electricity Total Sales Index (2010 = 100)

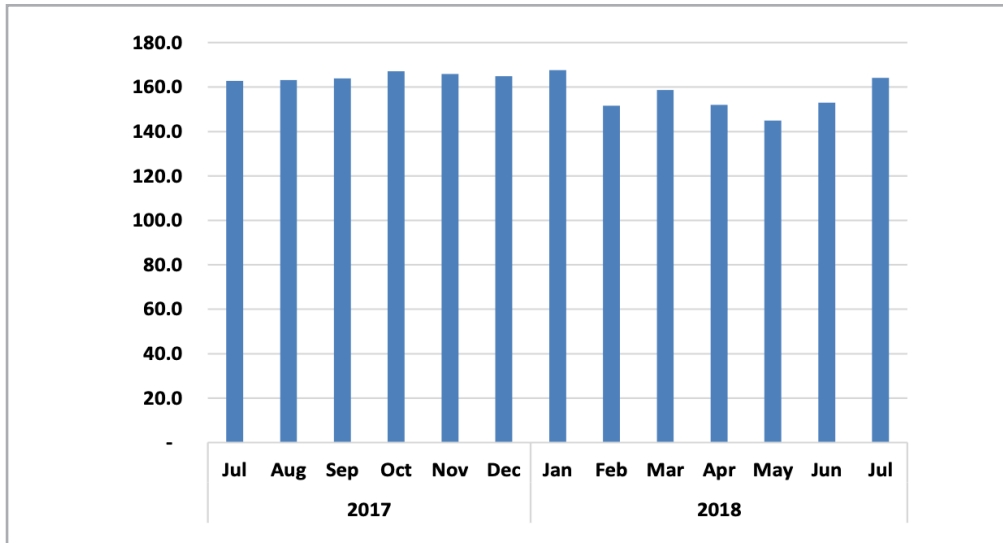
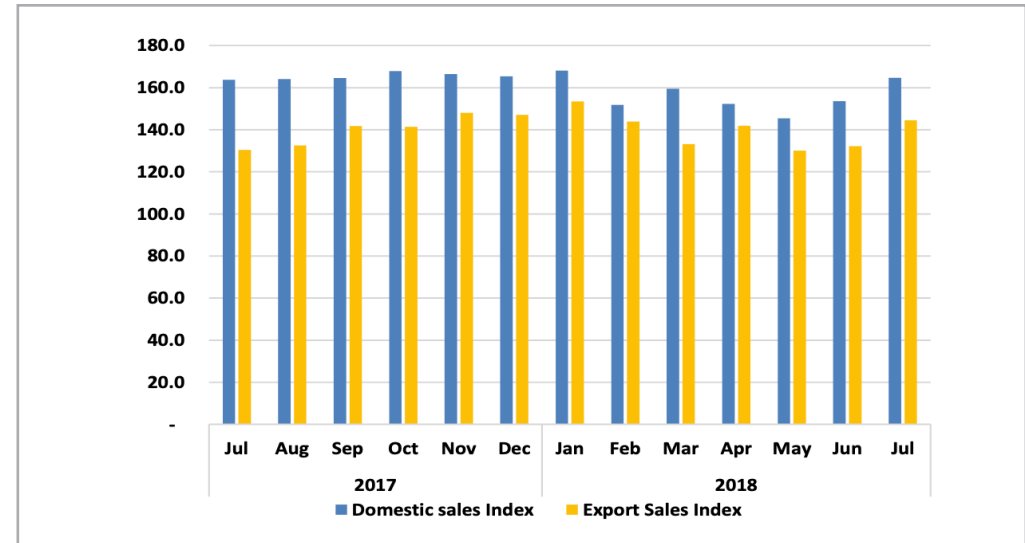


Chart 2: Electricity Sales Subsectors Index (2010 = 100)



- The **Electricity Sales Composite Index (ESCI)** that consists of domestic and export sales stood at 164.1 basis points in July 2018 compared to 152.9 basis points recorded in the preceding month. This represents increases of 7.3 percent m/m and 0.8 percent y/y.
- The **domestic sales sub-index** recorded 164.7 basis points in July 2018 compared to 153.6 basis points recorded in June 2018 (See Chart 2). This shows Increases of 7.2 percent m/m and 0.6 percent y/y.
- The **export sales sub-index** recorded 144.4 basis points in July 2018 compared to 132.2 basis points registered in June 2018. This represents increases of 9.2 percent m/m and 10.7 percent y/y.
- A **total** of 357 273 MWh of electricity was distributed in the domestic economy during July 2018 whilst only 9 557 MWh was exported during the same period.



Chart 3: Electricity Total Sources Index (2010 = 100)

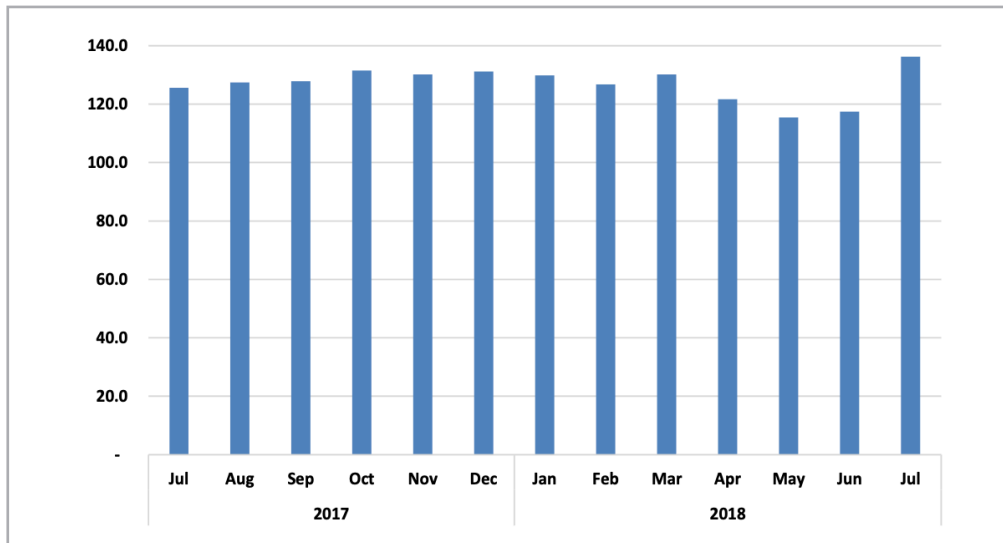
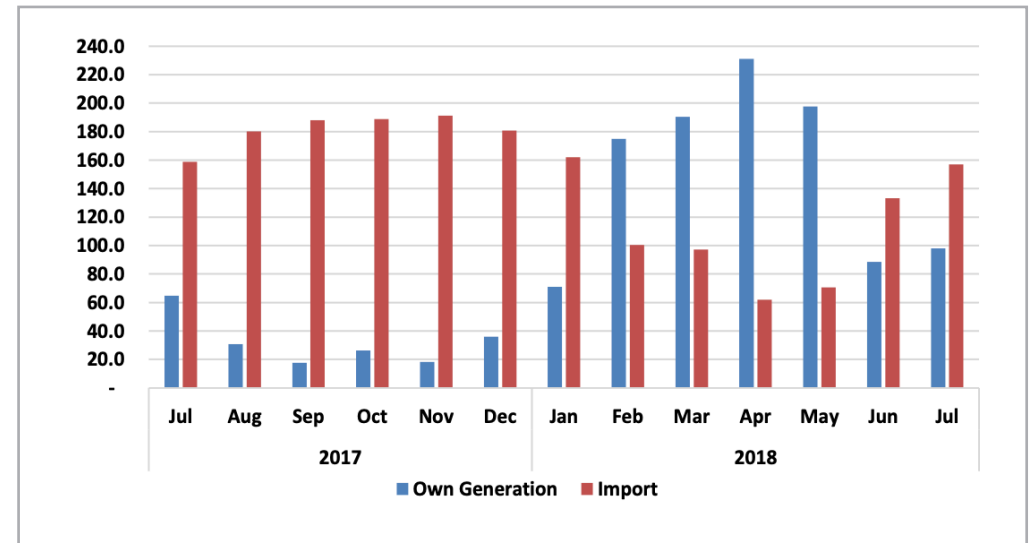


Chart 4: Electricity Sources Subsectors Index (2010 = 100)



- The **Electricity Sources Composite Index (ESCI)** that consists of own generated and import sources stood at 136.2 basis points in July 2018 compared to 117.4 basis points recorded for the previous month. This represents increases of 16.0 percent m/m and 8.4 percent y/y.
- The **own generated source** sub-index increased, recording 98.0 basis points in July 2018 compared to 88.5 basis points recorded for June 2018 (See Chart 4). This translates to an increase of 10.8 percent m/m and 51.4 percent y/y.
- The increase on y/y is attributed due to the increase in the generation of electricity mainly sourced from the Ruacana Power Station.

- The **import sources sub-index** recorded 157.0 basis points in July 2018 compared to 133.2 basis points recorded for June 2018. This represents an increase of 17.9 percent m/m and a decrease of 1.1 percent y/y.
- The y/y decline on import was mainly from Eskom Aggeneis and Skorpion Power Stations.
- A **total** of 110 380 MWh of electricity was generated in Namibia during July 2018 whilst 323 915 MWh was imported during the same period.



# Monthly Electricity Report

Issue 051  
27 September 2018

**Table 1: Electricity sales subsector in MWh**

Year	Month	Domestic sales	Exports	Year	Month	Domestic sales	Exports
2010	Jan	209,050	6,266	2014	Jan	241 755	7 267
	Feb	199,448	5,930		Feb	2 43 913	6 988
	Mar	223,412	6,093		Mar	2 57 198	6 988
	Apr	210,872	6,786		Apr	2 54 657	3 528
	May	212,520	6,577		May	254 651	3 126
	Jun	216,385	6,458		Jun	256 963	3 339
	Jul	223,373	6,668		Jul	265 930	3 151
	Aug	222,042	6,530		Aug	257 104	3 391
	Sep	215,880	6,597		Sep	259 670	3 534
	Oct	224,282	7,300		Oct	2 72 475	3 513
	Nov	220,976	7,168		Nov	2 72 649	3 337
	Dec	225,009	7,019		Dec	254 873	7 559
2011	Jan	220,754	6,723	Jan	2 73 548	8 051	
	Feb	209,276	6,094	Feb	2 44 280	7 329	
	Mar	224,987	5,518	Mar	275 447	8 051	
	Apr	211,291	4,485	Apr	2 58 836	7 086	
	May	224,720	4,853	May	2 66 261	6 476	
	Jun	227,816	6,768	Jun	2 72 395	6 853	
	Jul	241,925	7,382	Jul	278 331	6 930	
	Aug	237,336	7,186	Aug	2 75 082	7 515	
	Sep	233,669	6,854	Sep	2 66 705	8 261	
	Oct	240,742	8,653	Oct	3 08 507	9 122	
	Nov	233,689	7,338	Nov	317 226	8 812	
	Dec	229,641	7,556	Dec	3 86 755	8 876	
2012	Jan	238,320	7,885	Jan	2 35 943	8 614	
	Feb	226,787	7,269	Feb	329 678	8 465	
	Mar	242,209	7,829	Mar	340 141	8 209	
	Apr	229,105	7,473	Apr	332 054	8 190	
	May	239,032	7,832	May	360 693	7 646	
	Jun	245,163	7,339	Jun	319 637	8 142	
	Jul	255,169	7,282	Jul	3 28 472	8 405	
	Aug	248,953	7,551	Aug	3 40 658	7 709	
	Sep	242,637	7,340	Sep	338 117	8 087	
	Oct	255,556	7,651	Oct	3 55 265	8 555	
	Nov	255,349	7,364	Nov	3 50 664	8 844	
	Dec	241,860	5,348	Dec	3 50 587	8 221	
2013	Jan	252,370	7,819	Jan	3 47 882	8 127	
	Feb	240,016	7,847	Feb	309 404	7 741	
	Mar	254,075	7,680	Mar	372 168	8 660	
	Apr	247,225	7,444	Apr	321 999	8 440	
	May	246,908	6,311	May	329 224	8 502	
	Jun	245,297	6,908	Jun	321 999	8 440	
	July	257,875	6,416	Jul	3 55 164	8 629	
	Aug	252,068	7,083	Aug	3 55 952	8 766	
	Sept	249,489	7,117	Sep	3 56 907	9 379	
	Oct	260,609	7,222	Oct	3 64 259	9 356	
	Nov	261,928	6,673	Nov	3 61 064	9 794	
	Dec	237,401	7,027	Dec	3 58 817	9 728	
2018	Jan			Jan	3 64 558	10 153	
	Feb			Feb	3 29 357	9 518	
	Mar			Mar	345 885	8 811	
	Apr			Apr	3 30 372	9 387	
	May			May	3 15 369	8 603	
	Jun			Jun	3 33 169	8 749	
	Jul			Jul	357 273	9 557	



# Monthly Electricity Report

Issue 051  
27 September 2018

**Table 2: Total subsector electricity index (2010=100)**

Year	Month	Domestic sales Index	Exports Index	Total Sales Index
2010	Jan	96.4	94.7	96.3
	Feb	91.9	89.6	91.9
	Mar	103.0	92.1	102.7
	Apr	97.2	102.6	97.4
	May	98.0	99.4	98.0
	Jun	99.7	97.6	99.7
	Jul	103.0	100.8	102.9
	Aug	102.4	98.7	102.2
	Sep	99.5	99.7	99.5
	Oct	103.4	110.3	103.6
	Nov	101.9	108.3	102.1
	Dec	103.7	106.1	103.8
2011	Jan	101.8	101.6	101.8
	Feb	96.5	92.1	96.3
	Mar	103.7	83.4	103.1
	Apr	97.4	67.8	96.5
	May	103.6	73.4	102.7
	Jun	105.0	102.3	104.9
	Jul	111.5	111.6	111.5
	Aug	109.4	108.6	109.4
	Sep	107.7	103.6	107.6
	Oct	111.0	130.8	111.6
	Nov	107.7	110.9	107.8
	Dec	105.9	114.2	106.1
2012	Jan	109.9	119.2	110.1
	Feb	104.5	109.9	104.7
	Mar	111.6	118.3	111.8
	Apr	105.6	113.0	105.8
	May	110.2	118.4	110.4
	Jun	113.0	110.9	112.9
	Jul	117.6	110.1	117.4
	Aug	114.8	114.1	114.7
	Sep	111.8	110.9	111.8
	Oct	117.8	115.6	117.7
	Nov	117.7	111.3	117.5
	Dec	111.5	80.8	110.6
2013	Jan	116.3	118.2	116.4
	Feb	110.6	118.6	110.9
	Mar	117.1	116.1	117.1
	Apr	114.0	112.5	113.9
	May	113.8	95.4	113.3
	Jun	113.1	104.4	112.8
	July	118.9	97.0	118.2
	Aug	116.2	107.1	115.9
	Sept	115.0	107.6	114.8
	Oct	120.1	109.2	119.8
	Nov	120.7	100.9	120.2
	Dec	109.4	106.2	109.3

Year	Month	Domestic sales Index	Exports Index	Total Sales Index
2014	Jan	111.4	109.8	111.4
	Feb	112.4	105.6	112.2
	Mar	118.6	105.6	118.2
	Apr	117.4	53.3	115.5
	May	117.4	47.2	115.3
	Jun	118.5	50.5	116.4
	Jul	122.6	47.6	120.4
	Aug	118.5	51.3	116.5
	Sep	119.7	53.4	117.7
	Oct	125.6	53.1	123.5
	Nov	125.7	50.4	123.5
	Dec	117.5	114.3	117.4
2015	Jan	126.1	121.7	126.0
	Feb	112.6	110.8	112.5
	Mar	127.0	121.7	126.8
	Apr	119.3	107.1	119.0
	May	122.7	97.9	122.0
	June	125.6	103.6	124.9
	Jul	128.3	104.7	127.6
	Aug	126.8	113.6	126.4
	Sep	122.9	124.9	123.0
	Oct	142.2	137.9	142.1
	Nov	146.2	133.2	145.8
	Dec	178.3	134.2	177.0
2016	Jan	108.8	130.2	109.4
	Feb	152.0	128.0	151.3
	Mar	156.8	124.1	155.8
	Apr	153.1	123.8	152.2
	May	166.3	115.6	164.8
	Jun	147.3	123.1	146.6
	Jul	151.4	127.0	150.7
	Aug	157.0	116.5	155.8
	Sep	155.9	122.2	154.9
	Oct	163.8	129.3	162.7
	Nov	161.6	133.7	160.8
	Dec	161.6	124.3	160.5
2017	Jan	160.4	122.8	159.3
	Feb	142.6	117.0	141.9
	Mar	171.6	130.9	170.4
	Apr	148.4	127.6	147.8
	May	151.8	128.5	151.1
	Jun	148.4	127.6	147.8
	Jul	163.7	130.4	162.7
	Aug	164.1	132.5	163.1
	Sep	164.5	141.8	163.8
	Oct	167.9	141.4	167.1
	Nov	166.4	148.0	165.9
	Dec	165.4	147.0	164.9
2018	Jan	168.0	153.5	167.6
	Feb	151.8	143.9	151.6
	Mar	159.4	133.2	158.7
	Apr	152.3	141.9	152.0
	May	145.4	130.0	144.9
	Jun	153.6	132.2	152.9
	Jul	164.7	144.4	164.1



# Monthly Electricity Report

Issue 051  
27 September 2018

**Table 3: Electricity sources subsector in MWh**

Year	Month	Own generated	Import
2010	Jan	140 644	170 135
	Feb	142 680	150 060
	Mar	178 638	151 972
	Apr	1 73 468	139 471
	May	178 156	139 442
	Jun	148 632	174 819
	Jul	9 7 670	225 031
	Aug	7 2 090	249 267
	Sep	4 0 591	274 406
	Oct	27 817	299 253
	Nov	2 0 446	300 328
	Dec	130 795	200 847
2011	Jan	1 79 164	151 325
	Feb	162 476	142 391
	Mar	1 78 048	164 230
	Apr	1 72 703	142 254
	May	176 917	150 988
	Jun	169 554	164 192
	Jul	1 24 571	223 981
	Aug	1 18 103	224 347
	Sep	7 7 751	254 100
	Oct	42 346	307 624
	Nov	5 3 511	282 511
	Dec	1 51 806	180 962
2012	Jan	157 208	164 502
	Feb	1 66 661	1 59 444
	Mar	2 29 125	140 437
	Apr	2 35 433	120 761
	May	1 55 836	189 724
	Jun	9 8 948	2 53 287
	Jul	7 4 187	2 86 481
	Aug	7 1 051	2 86 376
	Sep	6 7 074	2 79 955
	Oct	65 758	294 002
	Nov	5 5 820	2 78 314
	Dec	1 42 163	1 98 319
2013	Jan	167 462	195 583
	Feb	125 756	204 038
	Mar	167 472	2 06 633
	Apr	2 11 960	1 44 284
	May	1 04 421	2 46 184
	Jun	7 6 007	2 74 746
	July	7 2 474	284 626
	Aug	64 967	2 93 024
	Sept	6 3 001	2 88 570
	Oct	5 3 014	3 14 523
	Nov	5 5 559	2 93 075
	Dec	1 76 914	170 331

Year	Month	Own generated	Import
2014	Jan	145 842	198 645
	Feb	115 363	198 001
	Mar	184 214	141 568
	Apr	237 021	105 445
	May	210 882	196 032
	Jun	118 989	242 204
	Jul	99 737	263 470
	Aug	92 585	266 068
	Sep	7 6 471	2 75 901
	Oct	6 7 229	3 01 895
	Nov	5 7 226	296 399
	Dec	2 09 267	2 16 303
2015	Jan	1 66 465	184 477
	Feb	149 796	178 355
	Mar	175 681	1 99 340
	Apr	212 911	169 782
	May	1 25 127	2 40 258
	Jun	8 7 582	269 882
	Jul	7 2 589	2 95 327
	Aug	71 478	2 97 025
	Sep	6 4 753	122 673
	Oct	5 2 155	302 342
	Nov	64 708	295 293
	Dec	82 584	304 172
2016	Jan	1 89 959	2 35 943
	Feb	179 873	1 94 909
	Mar	1 90 795	348 351
	Apr	1 82 267	197 959
	May	16 273	199 437
	Jun	108 304	2 56 083
	Jul	9 7 040	275 631
	Aug	9 7 386	2 78 153
	Sep	66 601	312 590
	Oct	66 875	316 925
	Nov	83 487	3 11 182
	Dec	1 71 237	2 26 916
2017	Jan	2 32 502	169 601
	Feb	185 610	167 716
	Mar	2 59 472	1 60 430
	Apr	2 23 170	178 971
	May	1 34 392	236 814
	Jun	83 410	269 000
	Jul	72 916	3 27 542
	Aug	3 4 542	371 617
	Sep	19 885	387 666
	Oct	2 9 702	3 89 450
	Nov	2 0 651	394 322
	Dec	40 532	372 611
2018	Jan	7 9 862	334 179
	Feb	197 034	207 219
	Mar	2 14 593	2 00 423
	Apr	260 294	127 802
	May	222 541	145 444
	Jun	99 652	274 653
	Jul	1 10 380	3 23 915



# Monthly Electricity Report

Issue 051  
27 September 2018

**Table 4: Total subsector electricity index (2010=100)**

Year	Month	Own generated Index	Import Index	Total Electricity in Namibia Index
2010	Jan	124.9	8 2.5	97.5
	Feb	126.7	7 2.8	91.8
	Mar	-	7 3.7	47.7
	Apr	154.0	6 7.6	98.1
	May	158.2	67.6	99.6
	Jun	132.0	8 4.8	1 01.4
	Jul	86.7	109.1	101.2
	Aug	6 4.0	120.9	100.8
	Sep	3 6.0	133.0	98.8
	Oct	24.7	145.1	1 02.6
	Nov	18.2	145.6	1 00.6
	Dec	116.1	9 7.4	1 04.0
2011	Jan	159.1	73.4	1 03.6
	Feb	144.2	6 9.0	95.6
	Mar	158.1	7 9.6	107.3
	Apr	153.3	69.0	98.8
	May	157.1	7 3.2	1 02.8
	Jun	150.5	7 9.6	1 04.7
	Jul	110.6	108.6	109.3
	Aug	104.9	108.8	1 07.4
	Sep	6 9.0	123.2	104.1
	Oct	3 7.6	149.1	1 09.7
	Nov	47.5	137.0	105.4
	Dec	134.8	87.7	104.4
2012	Jan	139.6	79.8	100.9
	Feb	148.0	77.3	1 02.3
	Mar	203.4	68.1	115.9
	Apr	209.0	5 8.5	1 11.7
	May	138.4	9 2.0	1 08.4
	Jun	8 7.8	122.8	1 10.5
	Jul	65.9	138.9	1 13.1
	Aug	6 3.1	138.8	1 12.1
	Sep	59.5	135.7	108.8
	Oct	5 8.4	142.5	112.8
	Nov	49.6	134.9	104.8
	Dec	126.2	9 6.2	106.8
2013	Jan	148.7	94.8	1 13.8
	Feb	111.6	98.9	1 03.4
	Mar	148.7	100.2	117.3
	Apr	188.2	7 0.0	1 11.7
	May	92.7	119.4	1 09.9
	Jun	67.5	133.2	110.0
	Jul	64.3	138.0	112.0
	Aug	5 7.7	142.1	112.3
	Sept	5 5.9	139.9	1 10.2
	Oct	4 7.1	152.5	1 15.3
	Nov	49.3	142.1	109.3
	Dec	157.1	82.6	108.9

Year	Month	Own generated Index	Import Index	Total Electricity in Namibia Index
2014	Jan	129.5	96.3	108.0
	Feb	102.4	96.0	98.3
	Mar	163.5	68.6	102.2
	Apr	210.4	51.1	107.4
	May	187.2	95.0	127.6
	Jun	105.6	1 17.4	113.3
	Jul	88.5	1 27.7	113.9
	Aug	8 2.2	1 29.0	112.5
	Sep	6 7.9	133.8	110.5
	Oct	59.7	1 46.4	115.8
	Nov	5 0.8	1 43.7	110.9
	Dec	185.8	1 04.9	133.5
2015	Jan	147.8	89.4	110.1
	Feb	133.0	86.5	102.9
	Mar	156.0	96.6	117.6
	Apr	189.0	82.3	120.0
	May	111.1	1 16.5	114.6
	June	7 7.8	130.9	112.1
	Jul	6 4.4	1 43.2	115.4
	Aug	63.5	1 44.0	115.6
	Sep	5 7.5	59.5	58.8
	Oct	4 6.3	1 46.6	111.2
	Nov	5 7.4	1 43.2	112.9
	Dec	73.3	1 47.5	121.3
2016	Jan	168.6	1 14.4	133.6
	Feb	159.7	94.5	117.5
	Mar	169.4	1 68.9	169.1
	Apr	161.8	96.0	119.2
	May	1 4.4	96.7	67.6
	Jun	9 6.2	124.2	114.3
	Jul	8 6.2	1 33.6	116.9
	Aug	8 6.5	1 34.9	117.8
	Sep	59.1	1 51.6	118.9
	Oct	59.4	1 53.7	120.4
	Nov	7 4.1	1 50.9	123.8
	Dec	152.0	1 10.0	124.9
2017	Jan	206.4	82.2	126.1
	Feb	164.8	81.3	110.8
	Mar	230.4	77.8	131.7
	Apr	198.1	86.8	126.1
	May	119.3	1 14.8	116.4
	Jun	7 4.1	1 30.4	110.5
	Jul	64.7	1 58.8	125.6
	Aug	3 0.7	1 80.2	127.4
	Sep	1 7.7	1 88.0	127.8
	Oct	2 6.4	1 88.8	131.4
	Nov	18.3	1 91.2	130.1
	Dec	3 6.0	1 80.7	129.6
2018	Jan	7 0.9	1 62.0	129.8
	Feb	174.9	1 00.5	126.8
	Mar	190.5	97.2	130.1
	Apr	231.1	62.0	121.7
	May	197.6	70.5	115.4
	Jun	8 8.5	1 33.2	117.4
	Jul	98.0	1 57.0	136.2



## Methodology

- Background:** Domestic electricity Sales, exports data and Sources is weighted to calculate the overall index.
- Data sources:** NamPower
- Base year:** 2010