



Chart 1: Electricity Total Sales Index (2010 = 100)

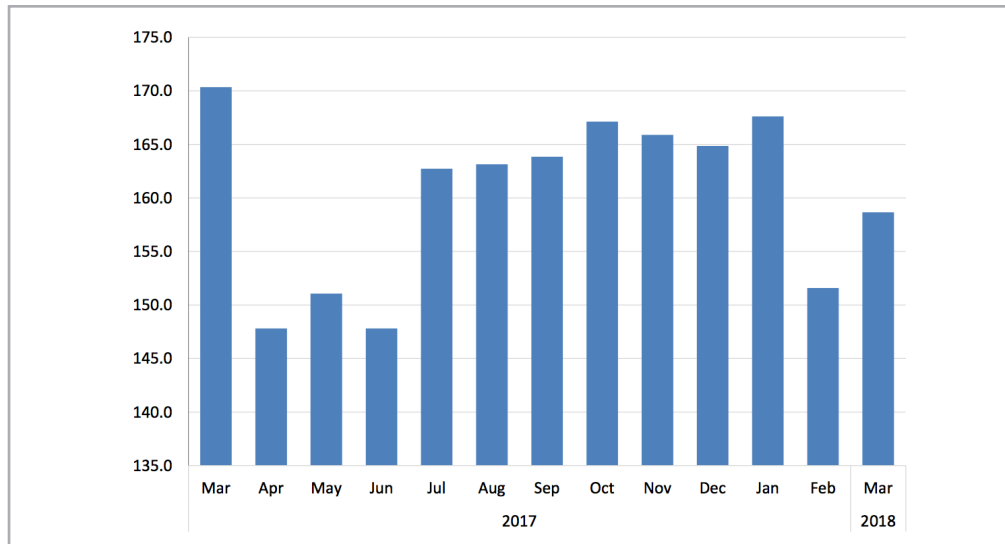
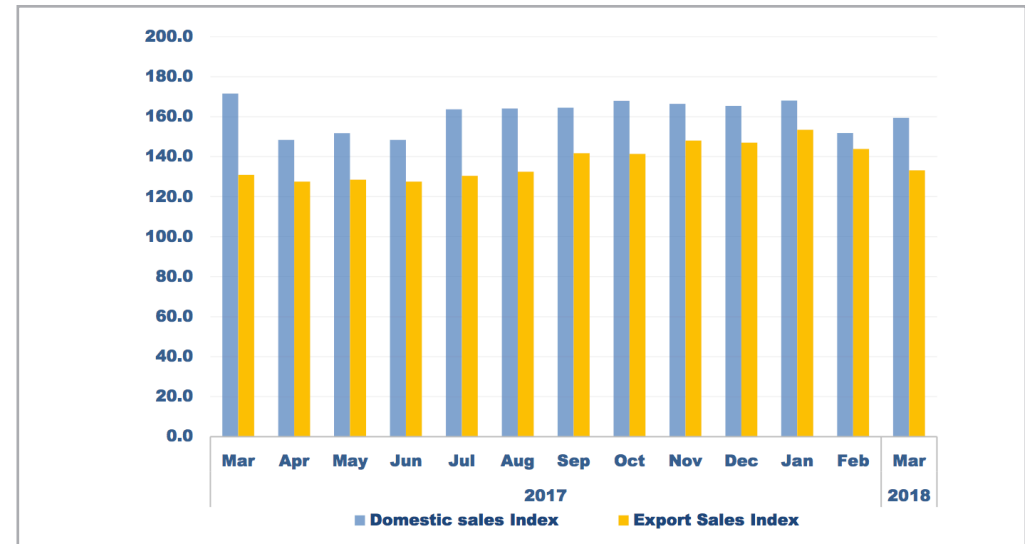


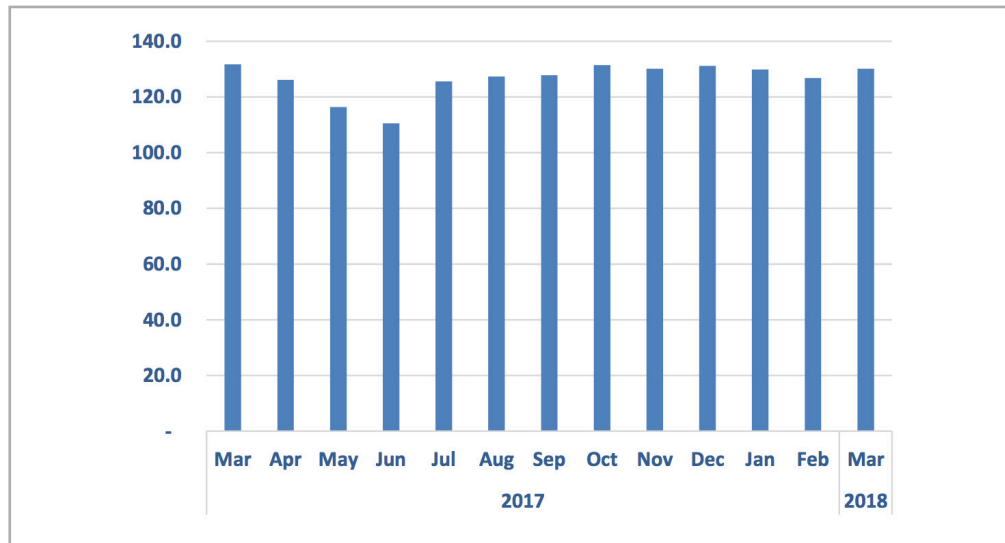
Chart 2: Electricity Sales Subsectors Index (2010 = 100)



- The **Electricity Sales Composite Index (ESCI)** that consists of domestic and export sales stood at 158.7 basis points in March 2018 compared to 151.6 basis points recorded in the preceding month. This represents an increase of 4.7 percent m/m and a decrease of 6.9 percent y/y.
- The **domestic sales sub-index** recorded 159.4 basis points in March 2018 compared to 151.8 basis points recorded in February 2018 (See Chart 2). This shows increase of 5.0 percent m/m and a decrease of 7.1 percent y/y.
- The **export sales sub-index** recorded 133.2 basis points in March 2018 compared to 143.9 basis points registered in February 2018. This represents a decrease of 7.4 percent m/m and an increase of 1.7 percent y/y.
- A **total** of 345 885 MWh of electricity was distributed in the domestic economy during March 2018 whilst only 8 811 MWh was exported during the same period.



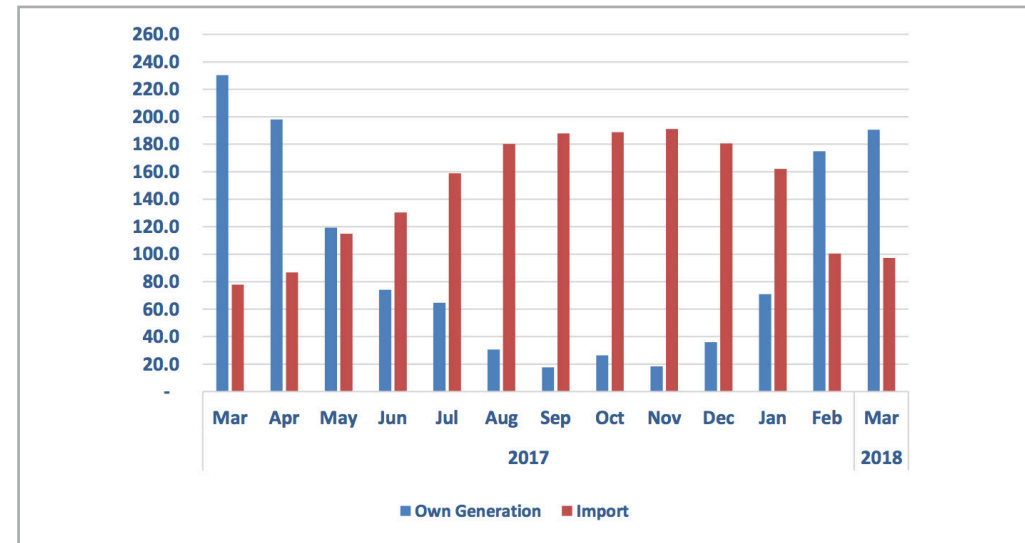
Chart 3: Electricity Total Sources Index (2010 = 100)



The **Electricity Sources Composite Index (ESCI)** that consists of own generated and import sources stood at 130.1 basis points in March 2018 compared to 126.8 basis points recorded for the previous month. This represents an increase of 2.7 percent m/m and a decrease of 1.2 percent y/y.

- The **own generated source** sub-index increased, recording 190.5 basis points in March 2018 compared to 174.9 basis points recorded for February 2018 (See Chart 4). This translates to an increase of 8.9 percent m/m and a decrease of 17.3 percent y/y.

Chart 4: Electricity Sources Subsectors Index (2010 = 100)



- The **import sources sub-index** recorded 97.2 basis points in March 2018 compared to 100.5 basis points recorded for February 2018. This represents a decrease of 3.3 percent m/m and an increase of 24.9 percent y/y.
- A **total** of 214 593 MWh of electricity was generated in Namibia during March 2018 whilst 200 423 MWh was imported during the same period.



Monthly Electricity Report

Issue 047
25 June 2018

Table 1: Electricity sales subsector in MWh

Year	Month	Domestic sales	Exports	Year	Month	Domestic sales	Exports
2010	Jan	209,050	6,266	2014	Jan	2 41 755	7 267
	Feb	199,448	5,930		Feb	243 913	6 988
	Mar	223,412	6,093		Mar	257 198	6 988
	Apr	210,872	6,786		Apr	254 657	3 528
	May	212,520	6,577		May	254 651	3 126
	Jun	216,385	6,458		Jun	2 56 963	3 339
	Jul	223,373	6,668		Jul	2 65 930	3 151
	Aug	222,042	6,530		Aug	2 57 104	3 391
	Sep	215,880	6,597		Sep	259 670	3 534
	Oct	224,282	7,300		Oct	2 72 475	3 513
	Nov	220,976	7,168		Nov	272 649	3 337
	Dec	225,009	7,019		Dec	254 873	7 559
2011	Jan	220,754	6,723	2015	Jan	2 73 548	8 051
	Feb	209,276	6,094		Feb	2 44 280	7 329
	Mar	224,987	5,518		Mar	275 447	8 051
	Apr	211,291	4,485		Apr	258 836	7 086
	May	224,720	4,853		May	266 261	6 476
	Jun	227,816	6,768		Jun	272 395	6 853
	Jul	241,925	7,382		Jul	2 78 331	6 930
	Aug	237,336	7,186		Aug	275 082	7 515
	Sep	233,669	6,854		Sep	266 705	8 261
	Oct	240,742	8,653		Oct	3 08 507	9 122
	Nov	233,689	7,338		Nov	3 17 226	8 812
	Dec	229,641	7,556		Dec	386 755	8 876
2012	Jan	238,320	7,885	2016	Jan	2 35 943	8 614
	Feb	226,787	7,269		Feb	329 678	8 465
	Mar	242,209	7,829		Mar	3 40 141	8 209
	Apr	229,105	7,473		Apr	3 32 054	8 190
	May	239,032	7,832		May	3 60 693	7 646
	Jun	245,163	7,339		Jun	3 19 637	8 142
	Jul	255,169	7,282		Jul	328 472	8 405
	Aug	248,953	7,551		Aug	3 40 658	7 709
	Sep	242,637	7,340		Sep	338 117	8 087
	Oct	255,556	7,651		Oct	355 265	8 555
	Nov	255,349	7,364		Nov	3 50 664	8 844
	Dec	241,860	5,348		Dec	350 587	8 221
2013	Jan	252,370	7,819	2017	Jan	347 882	8 127
	Feb	240,016	7,847		Feb	3 09 404	7 741
	Mar	254,075	7,680		Mar	3 72 168	8 660
	Apr	247,225	7,444		Apr	3 21 999	8 440
	May	246,908	6,311		May	3 29 224	8 502
	Jun	245,297	6,908		Jun	321 999	8 440
	July	257,875	6,416		Jul	355 164	8 629
	Aug	252,068	7,083		Aug	355 952	8 766
	Sept	249,489	7,117		Sep	356 907	9 379
	Oct	260,609	7,222		Oct	364 259	9 356
	Nov	261,928	6,673		Nov	3 61 064	9 794
	Dec	237,401	7,027		Dec	3 58 817	9 728
2018				2018	Jan	3 64 558	10 153
					Feb	3 29 357	9 518
					Mar	3 45 885	8 811



Monthly Electricity Report

Issue 047
25 June 2018

Table 2: Total subsector electricity index (2010=100)

Year	Month	Domestic sales Index	Exports Index	Total Sales Index
2010	Jan	96.4	94.7	96.3
	Feb	91.9	89.6	91.9
	Mar	103.0	92.1	102.7
	Apr	97.2	102.6	97.4
	May	98.0	99.4	98.0
	Jun	99.7	97.6	99.7
	Jul	103.0	100.8	102.9
	Aug	102.4	98.7	102.2
	Sep	99.5	99.7	99.5
	Oct	103.4	110.3	103.6
	Nov	101.9	108.3	102.1
	Dec	103.7	106.1	103.8
2011	Jan	101.8	101.6	101.8
	Feb	96.5	92.1	96.3
	Mar	103.7	83.4	103.1
	Apr	97.4	67.8	96.5
	May	103.6	73.4	102.7
	Jun	105.0	102.3	104.9
	Jul	111.5	111.6	111.5
	Aug	109.4	108.6	109.4
	Sep	107.7	103.6	107.6
	Oct	111.0	130.8	111.6
	Nov	107.7	110.9	107.8
	Dec	105.9	114.2	106.1
2012	Jan	109.9	119.2	110.1
	Feb	104.5	109.9	104.7
	Mar	111.6	118.3	111.8
	Apr	105.6	113.0	105.8
	May	110.2	118.4	110.4
	Jun	113.0	110.9	112.9
	Jul	117.6	110.1	117.4
	Aug	114.8	114.1	114.7
	Sep	111.8	110.9	111.8
	Oct	117.8	115.6	117.7
	Nov	117.7	111.3	117.5
	Dec	111.5	80.8	110.6
2013	Jan	116.3	118.2	116.4
	Feb	110.6	118.6	110.9
	Mar	117.1	116.1	117.1
	Apr	114.0	112.5	113.9
	May	113.8	95.4	113.3
	Jun	113.1	104.4	112.8
	July	118.9	97.0	118.2
	Aug	116.2	107.1	115.9
	Sept	115.0	107.6	114.8
	Oct	120.1	109.2	119.8
	Nov	120.7	100.9	120.2
	Dec	109.4	106.2	109.3

Year	Month	Domestic sales Index	Exports Index	Total Sales Index
2014	Jan	111.4	109.8	111.4
	Feb	112.4	105.6	112.2
	Mar	118.6	105.6	118.2
	Apr	117.4	53.3	115.5
	May	117.4	47.2	115.3
	Jun	118.5	50.5	116.4
	Jul	122.6	47.6	120.4
	Aug	118.5	51.3	116.5
	Sep	119.7	53.4	117.7
	Oct	125.6	53.1	123.5
	Nov	125.7	50.4	123.5
	Dec	117.5	114.3	117.4
2015	Jan	126.1	121.7	126.0
	Feb	112.6	110.8	112.5
	Mar	127.0	121.7	126.8
	Apr	119.3	107.1	119.0
	May	122.7	97.9	122.0
	June	125.6	103.6	124.9
	Jul	128.3	104.7	127.6
	Aug	126.8	113.6	126.4
	Sep	122.9	124.9	123.0
	Oct	142.2	137.9	142.1
	Nov	146.2	133.2	145.8
	Dec	178.3	134.2	177.0
2016	Jan	108.8	130.2	109.4
	Feb	152.0	128.0	151.3
	Mar	156.8	124.1	155.8
	Apr	153.1	123.8	152.2
	May	166.3	115.6	164.8
	Jun	147.3	123.1	146.6
	Jul	151.4	127.0	150.7
	Aug	157.0	116.5	155.8
	Sep	155.9	122.2	154.9
	Oct	163.8	129.3	162.7
	Nov	161.6	133.7	160.8
	Dec	161.6	124.3	160.5
2017	Jan	160.4	122.8	159.3
	Feb	142.6	117.0	141.9
	Mar	171.6	130.9	170.4
	Apr	148.4	127.6	147.8
	May	151.8	128.5	151.1
	June	148.4	127.6	147.8
	Jul	163.7	130.4	162.7
	Aug	164.1	132.5	163.1
	Sep	164.5	141.8	163.8
	Oct	167.9	141.4	167.1
	Nov	166.4	148.0	165.9
	Dec	165.4	147.0	164.9
2018	Jan	168.0	153.5	167.6
	Feb	151.8	143.9	151.6
	Mar	159.4	133.2	158.7



Monthly Electricity Report

Issue 047
25 June 2018

Table 3: Electricity sources subsector in MWh

Year	Month	Own generated	Import
2010	Jan	1 40 644	170 135
	Feb	1 42 680	150 060
	Mar	1 78 638	151 972
	Apr	1 73 468	139 471
	May	1 78 156	139 442
	Jun	148 632	174 819
	Jul	9 7 670	225 031
	Aug	7 2 090	249 267
	Sep	4 0 591	274 406
	Oct	2 7 817	299 253
	Nov	20 446	300 328
	Dec	130 795	200 847
2011	Jan	179 164	151 325
	Feb	1 62 476	142 391
	Mar	1 78 048	164 230
	Apr	172 703	142 254
	May	176 917	150 988
	Jun	1 69 554	164 192
	Jul	1 24 571	223 981
	Aug	118 103	224 347
	Sep	7 7 751	254 100
	Oct	4 2 346	307 624
	Nov	53 511	282 511
	Dec	1 51 806	180 962
2012	Jan	157 208	164 502
	Feb	1 66 661	1 59 444
	Mar	2 29 125	1 40 437
	Apr	2 35 433	120 761
	May	1 55 836	189 724
	Jun	9 8 948	253 287
	Jul	7 4 187	2 86 481
	Aug	7 1 051	2 86 376
	Sep	6 7 074	2 79 955
	Oct	65 758	294 002
	Nov	55 820	278 314
	Dec	142 163	1 98 319
2013	Jan	1 67 462	195 583
	Feb	1 25 756	2 04 038
	Mar	1 67 472	2 06 633
	Apr	2 11 960	1 44 284
	May	104 421	2 46 184
	Jun	7 6 007	274 746
	July	7 2 474	2 84 626
	Aug	64 967	2 93 024
	Sept	6 3 001	2 88 570
	Oct	5 3 014	3 14 523
	Nov	55 559	2 93 075
	Dec	176 914	1 70 331

Year	Month	Own generated	Import
2014	Jan	1 45 842	1 98 645
	Feb	1 15 363	198 001
	Mar	184 214	1 41 568
	Apr	2 37 021	105 445
	May	2 10 882	1 96 032
	Jun	1 18 989	2 42 204
	Jul	99 737	2 63 470
	Aug	92 585	2 66 068
	Sep	76 471	2 75 901
	Oct	67 229	301 895
	Nov	57 226	296 399
	Dec	2 09 267	216 303
2015	Jan	1 66 465	1 84 477
	Feb	1 49 796	1 78 355
	Mar	1 75 681	1 99 340
	Apr	212 911	1 69 782
	May	1 25 127	2 40 258
	Jun	87 582	269 882
	Jul	7 2 589	2 95 327
	Aug	7 1 478	2 97 025
	Sep	64 753	1 22 673
	Oct	5 2 155	302 342
	Nov	64 708	295 293
	Dec	82 584	304 172
2016	Jan	189 959	235 943
	Feb	179 873	1 94 909
	Mar	1 90 795	3 48 351
	Apr	1 82 267	197 959
	May	1 6 273	1 99 437
	Jun	1 08 304	2 56 083
	Jul	97 040	275 631
	Aug	97 386	278 153
	Sep	66 601	3 12 590
	Oct	6 6 875	3 16 925
	Nov	8 3 487	311 182
	Dec	1 71 237	226 916
2017	Jan	2 32 502	1 69 601
	Feb	1 85 610	1 67 716
	Mar	2 59 472	1 60 430
	Apr	2 23 170	1 78 971
	May	1 34 392	2 36 814
	Jun	8 3 410	269 000
	Jul	7 2 916	327 542
	Aug	34 542	371 617
	Sep	19 885	387 666
	Oct	2 9 702	389 450
	Nov	20 651	394 322
	Dec	40 532	372 611
2018	Jan	79 862	3 34 179
	Feb	1 97 034	2 07 219
	Mar	2 14 593	200 423



Monthly Electricity Report

Issue 047
25 June 2018

Table 4: Total subsector electricity index (2010=100)

Year	Month	Own generated Index	Import Index	Total Electricity in Namibia Index
2010	Jan	124.9	82.5	97.5
	Feb	126.7	72.8	91.8
	Mar	-	73.7	47.7
	Apr	154.0	67.6	98.1
	May	158.2	67.6	99.6
	Jun	132.0	84.8	101.4
	Jul	86.7	109.1	101.2
	Aug	64.0	120.9	100.8
	Sep	36.0	133.0	98.8
	Oct	24.7	145.1	102.6
	Nov	18.2	145.6	100.6
	Dec	116.1	97.4	104.0
2011	Jan	159.1	73.4	103.6
	Feb	144.2	69.0	95.6
	Mar	158.1	79.6	107.3
	Apr	153.3	69.0	98.8
	May	157.1	73.2	102.8
	Jun	150.5	79.6	104.7
	Jul	110.6	108.6	109.3
	Aug	104.9	108.8	107.4
	Sep	69.0	123.2	104.1
	Oct	37.6	149.1	109.7
	Nov	47.5	137.0	105.4
	Dec	134.8	87.7	104.4
2012	Jan	139.6	79.8	100.9
	Feb	148.0	77.3	102.3
	Mar	203.4	68.1	115.9
	Apr	209.0	58.5	111.7
	May	138.4	92.0	108.4
	Jun	87.8	122.8	110.5
	Jul	65.9	138.9	113.1
	Aug	63.1	138.8	112.1
	Sep	59.5	135.7	108.8
	Oct	58.4	142.5	112.8
	Nov	49.6	134.9	104.8
	Dec	126.2	96.2	106.8
2013	Jan	148.7	94.8	113.8
	Feb	111.6	98.9	103.4
	Mar	148.7	100.2	117.3
	Apr	188.2	70.0	111.7
	May	92.7	119.4	109.9
	Jun	67.5	133.2	110.0
	Jul	64.3	138.0	112.0
	Aug	57.7	142.1	112.3
	Sept	55.9	139.9	110.2
	Oct	47.1	152.5	115.3
	Nov	49.3	142.1	109.3
	Dec	157.1	82.6	108.9
2014	Jan	129.5	96.3	108.0
	Feb	102.4	96.0	98.3
	Mar	163.5	68.6	102.2
	Apr	210.4	51.1	107.4
	May	187.2	95.0	127.6
	Jun	105.6	117.4	113.3
	Jul	88.5	127.7	113.9
	Aug	82.2	129.0	112.5
	Sep	67.9	133.8	110.5
	Oct	59.7	146.4	115.8
	Nov	50.8	143.7	110.9
	Dec	185.8	104.9	133.5
2015	Jan	147.8	89.4	110.1
	Feb	133.0	86.5	102.9
	Mar	156.0	96.6	117.6
	Apr	189.0	82.3	120.0
	May	111.1	116.5	114.6
	June	77.8	130.9	112.1
	Jul	64.4	143.2	115.4
	Aug	63.5	144.0	115.6
	Sep	57.5	59.5	58.8
	Oct	46.3	146.6	111.2
	Nov	57.4	143.2	112.9
	Dec	73.3	147.5	121.3
2016	Jan	168.6	114.4	133.6
	Feb	159.7	94.5	117.5
	Mar	169.4	168.9	169.1
	Apr	161.8	96.0	119.2
	May	14.4	96.7	67.6
	Jun	96.2	124.2	114.3
	Jul	86.2	133.6	116.9
	Aug	86.5	134.9	117.8
	Sep	59.1	151.6	118.9
	Oct	59.4	153.7	120.4
	Nov	74.1	150.9	123.8
	Dec	152.0	110.0	124.9
2017	Jan	206.4	82.2	126.1
	Feb	164.8	81.3	110.8
	Mar	230.4	77.8	131.7
	Apr	198.1	86.8	126.1
	May	119.3	114.8	116.4
	June	74.1	130.4	110.5
	Jul	64.7	158.8	125.6
	Aug	30.7	180.2	127.4
	Sep	17.7	188.0	127.8
	Oct	26.4	188.8	131.4
	Nov	18.3	191.2	130.1
	Dec	36.0	180.7	129.6
2018	Jan	70.9	162.0	129.8
	Feb	174.9	100.5	126.8
	Mar	190.5	97.2	130.1



Methodology

Background: Domestic electricity Sales, exports data and Sources is weighted to calculate the overall index.

Data sources: NamPower

Base year: 2010