



Chart 1: Electricity Total Sales Index (2010 = 100)

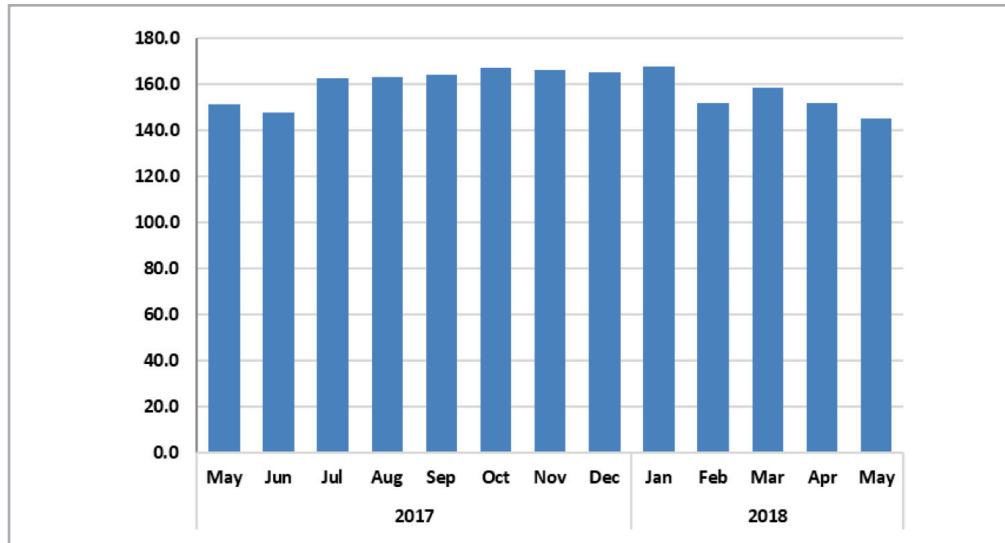
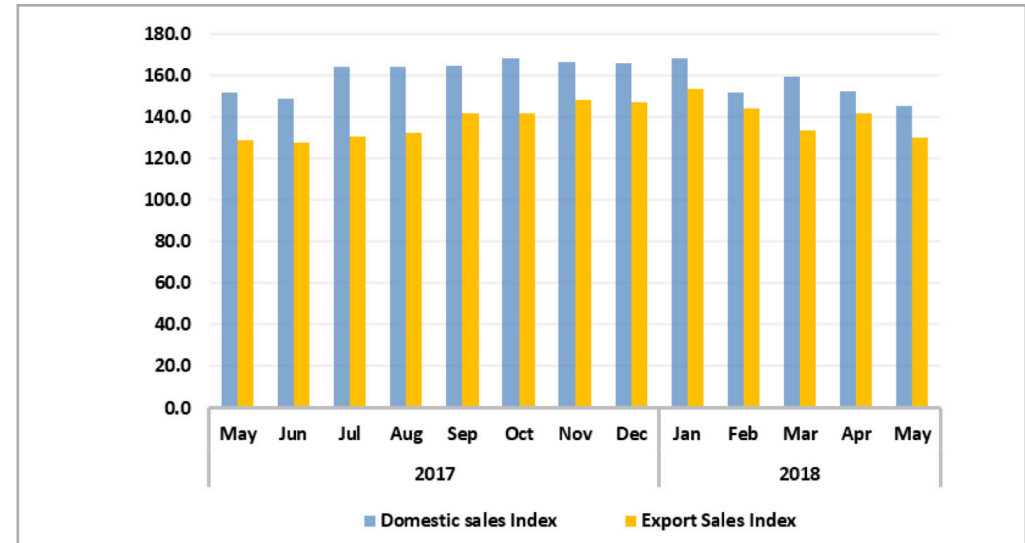


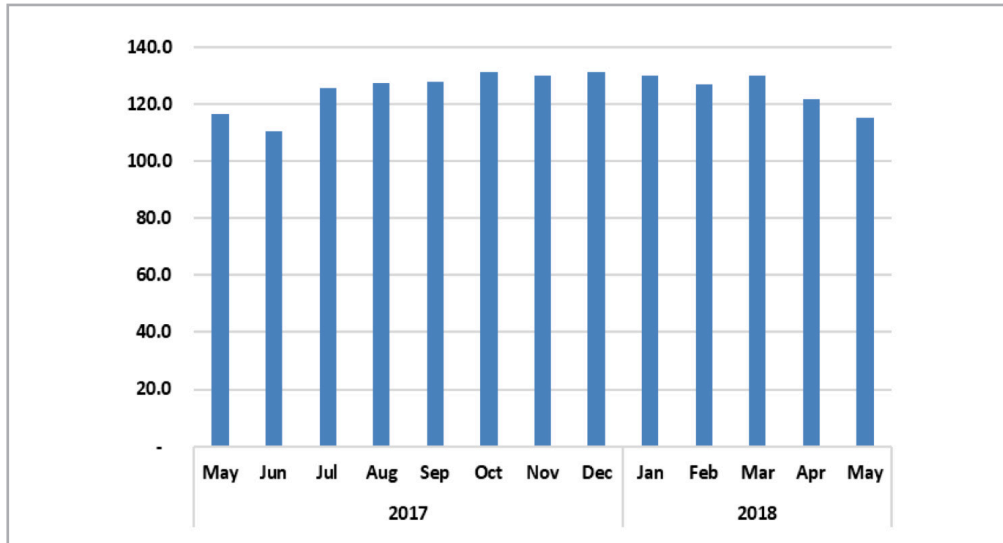
Chart 2: Electricity Sales Subsectors Index (2010 = 100)



- The **Electricity Sales Composite Index (ESCI)** that consists of domestic and export sales stood at 144.9 basis points in May 2018 compared to 152.0 basis points recorded in the preceding month. This represents decreases of 4.6 percent m/m and 4.1 percent y/y.
- The **domestic sales sub-index** recorded 145.4 basis points in May 2018 compared to 152.3 basis points recorded in April 2018 (See Chart 2). These are declines of 4.5 percent m/m and 4.2 percent y/y.
- The **export sales sub-index** recorded 130.0 basis points in May 2018 compared to 141.9 basis points registered in April 2018. This represents a decrease of 8.4 percent m/m and an increase of 1.2 percent y/y.
- A **total** of 315 369 MWh of electricity was distributed in the domestic economy during May 2018 whilst only 8 603 MWh was exported during the same period.



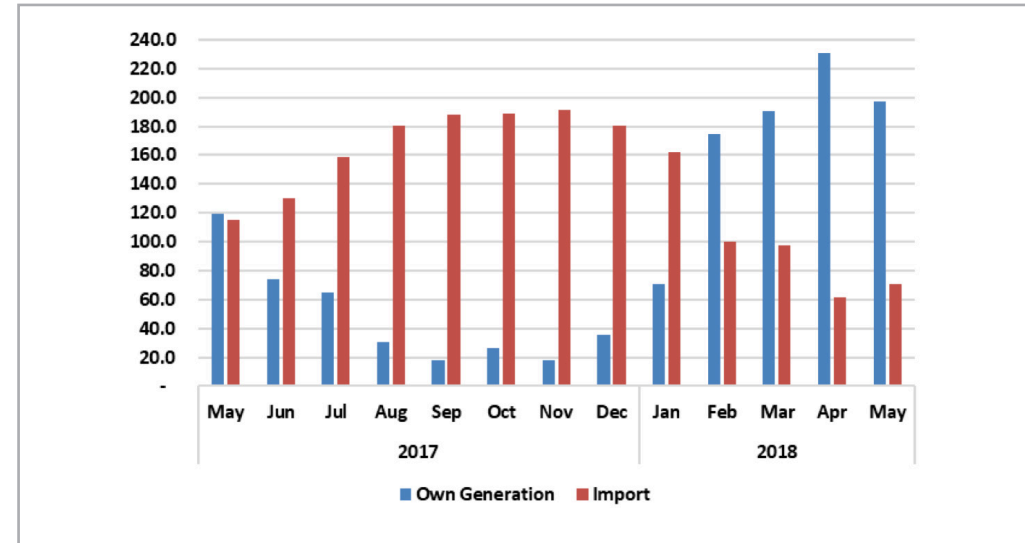
Chart 3: Electricity Total Sources Index (2010 = 100)



The **Electricity Sources Composite Index (ESCI)** that consists of own generated and import sources stood at 115.4 basis points in May 2018 compared to 121.7 basis points recorded for the previous month. This represents declines of 5.2 percent m/m and 0.9 percent y/y.

- The **own generated source** sub-index decreased, recording 197.6 basis points in May 2018 compared to 231.1 basis points recorded for April 2018 (See Chart 4). This translates into a decline of 14.5 percent m/m and an increase of 65.6 percent y/y
- The increase over the year is mainly due to the increase in the generation of electricity from Ruacana power station.

Chart 4: Electricity Sources Subsectors Index (2010 = 100)



- The **import sources sub-index** recorded 70.5 basis points in May 2018 compared to 62.0 basis points recorded for April 2018. This represents an increase of 13.8 percent m/m and a decrease of 38.6 percent y/y.
- The y/y decline for the electricity imports is mainly from Eskom Aggeneis and Scorpion.
- A **total** of 222 541 MWh of electricity was generated in Namibia during May 2018 whilst 145 444 MWh was imported during the same period.



Monthly Electricity Report

Issue 049
08 August 2018

Table 1: Electricity sales subsector in MWh

Year	Month	Domestic sales	Exports	Year	Month	Domestic sales	Exports	
2010	Jan		209,050	6,266	2014	Jan	241 755	7 267
	Feb		199,448	5,930		Feb	2 43 913	6 988
	Mar		223,412	6,093		Mar	257 198	6 988
	Apr		210,872	6,786		Apr	254 657	3 528
	May		212,520	6,577		May	2 54 651	3 126
	Jun		216,385	6,458		Jun	2 56 963	3 339
	Jul		223,373	6,668		Jul	2 65 930	3 151
	Aug		222,042	6,530		Aug	257 104	3 391
	Sep		215,880	6,597		Sep	2 59 670	3 534
	Oct		224,282	7,300		Oct	272 475	3 513
	Nov		220,976	7,168		Nov	2 72 649	3 337
	Dec		225,009	7,019		Dec	254 873	7 559
2011	Jan		220,754	6,723	Jan	2 73 548	8 051	
	Feb		209,276	6,094	Feb	2 44 280	7 329	
	Mar		224,987	5,518	Mar	275 447	8 051	
	Apr		211,291	4,485	Apr	2 58 836	7 086	
	May		224,720	4,853	May	2 66 261	6 476	
	Jun		227,816	6,768	Jun	2 72 395	6 853	
	Jul		241,925	7,382	Jul	278 331	6 930	
	Aug		237,336	7,186	Aug	2 75 082	7 515	
	Sep		233,669	6,854	Sep	266 705	8 261	
	Oct		240,742	8,653	Oct	308 507	9 122	
	Nov		233,689	7,338	Nov	317 226	8 812	
	Dec		229,641	7,556	Dec	3 86 755	8 876	
2012	Jan		238,320	7,885	Jan	235 943	8 614	
	Feb		226,787	7,269	Feb	3 29 678	8 465	
	Mar		242,209	7,829	Mar	340 141	8 209	
	Apr		229,105	7,473	Apr	3 32 054	8 190	
	May		239,032	7,832	May	3 60 693	7 646	
	Jun		245,163	7,339	Jun	319 637	8 142	
	Jul		255,169	7,282	Jul	3 28 472	8 405	
	Aug		248,953	7,551	Aug	3 40 658	7 709	
	Sep		242,637	7,340	Sep	338 117	8 087	
	Oct		255,556	7,651	Oct	3 55 265	8 555	
	Nov		255,349	7,364	Nov	3 50 664	8 844	
	Dec		241,860	5,348	Dec	350 587	8 221	
2013	Jan		252,370	7,819	Jan	347 882	8 127	
	Feb		240,016	7,847	Feb	3 09 404	7 741	
	Mar		254,075	7,680	Mar	372 168	8 660	
	Apr		247,225	7,444	Apr	321 999	8 440	
	May		246,908	6,311	May	329 224	8 502	
	Jun		245,297	6,908	Jun	3 21 999	8 440	
	July		257,875	6,416	Jul	355 164	8 629	
	Aug		252,068	7,083	Aug	355 952	8 766	
	Sept		249,489	7,117	Sep	356 907	9 379	
	Oct		260,609	7,222	Oct	3 64 259	9 356	
	Nov		261,928	6,673	Nov	361 064	9 794	
	Dec		237,401	7,027	Dec	3 58 817	9 728	
2018				Jan	3 64 558	10 153		
				Feb	3 29 357	9 518		
				Mar	3 45 885	8 811		
				Apr	330 372	9 387		
				May	3 15 369	8 603		



Monthly Electricity Report

Issue 049
08 August 2018

Table 2: Total subsector electricity index (2010=100)

Year	Month	Domestic sales Index	Exports Index	Total Sales Index
2010	Jan	96.4	94.7	96.3
	Feb	91.9	89.6	91.9
	Mar	103.0	92.1	102.7
	Apr	97.2	102.6	97.4
	May	98.0	99.4	98.0
	Jun	99.7	97.6	99.7
	Jul	103.0	100.8	102.9
	Aug	102.4	98.7	102.2
	Sep	99.5	99.7	99.5
	Oct	103.4	110.3	103.6
	Nov	101.9	108.3	102.1
	Dec	103.7	106.1	103.8
2011	Jan	101.8	101.6	101.8
	Feb	96.5	92.1	96.3
	Mar	103.7	83.4	103.1
	Apr	97.4	67.8	96.5
	May	103.6	73.4	102.7
	Jun	105.0	102.3	104.9
	Jul	111.5	111.6	111.5
	Aug	109.4	108.6	109.4
	Sep	107.7	103.6	107.6
	Oct	111.0	130.8	111.6
	Nov	107.7	110.9	107.8
	Dec	105.9	114.2	106.1
2012	Jan	109.9	119.2	110.1
	Feb	104.5	109.9	104.7
	Mar	111.6	118.3	111.8
	Apr	105.6	113.0	105.8
	May	110.2	118.4	110.4
	Jun	113.0	110.9	112.9
	Jul	117.6	110.1	117.4
	Aug	114.8	114.1	114.7
	Sep	111.8	110.9	111.8
	Oct	117.8	115.6	117.7
	Nov	117.7	111.3	117.5
	Dec	111.5	80.8	110.6
2013	Jan	116.3	118.2	116.4
	Feb	110.6	118.6	110.9
	Mar	117.1	116.1	117.1
	Apr	114.0	112.5	113.9
	May	113.8	95.4	113.3
	Jun	113.1	104.4	112.8
	July	118.9	97.0	118.2
	Aug	116.2	107.1	115.9
	Sept	115.0	107.6	114.8
	Oct	120.1	109.2	119.8
	Nov	120.7	100.9	120.2
	Dec	109.4	106.2	109.3

Year	Month	Domestic sales Index	Exports Index	Total Sales Index
2014	Jan	111.4	109.8	111.4
	Feb	112.4	105.6	112.2
	Mar	118.6	105.6	118.2
	Apr	117.4	53.3	115.5
	May	117.4	47.2	115.3
	Jun	118.5	50.5	116.4
	Jul	122.6	47.6	120.4
	Aug	118.5	51.3	116.5
	Sep	119.7	53.4	117.7
	Oct	125.6	53.1	123.5
	Nov	125.7	50.4	123.5
	Dec	117.5	114.3	117.4
2015	Jan	126.1	121.7	126.0
	Feb	112.6	110.8	112.5
	Mar	127.0	121.7	126.8
	Apr	119.3	107.1	119.0
	May	122.7	97.9	122.0
	June	125.6	103.6	124.9
	Jul	128.3	104.7	127.6
	Aug	126.8	113.6	126.4
	Sep	122.9	124.9	123.0
	Oct	142.2	137.9	142.1
	Nov	146.2	133.2	145.8
	Dec	178.3	134.2	177.0
2016	Jan	108.8	130.2	109.4
	Feb	152.0	128.0	151.3
	Mar	156.8	124.1	155.8
	Apr	153.1	123.8	152.2
	May	166.3	115.6	164.8
	Jun	147.3	123.1	146.6
	Jul	151.4	127.0	150.7
	Aug	157.0	116.5	155.8
	Sep	155.9	122.2	154.9
	Oct	163.8	129.3	162.7
	Nov	161.6	133.7	160.8
	Dec	161.6	124.3	160.5
2017	Jan	160.4	122.8	159.3
	Feb	142.6	117.0	141.9
	Mar	171.6	130.9	170.4
	Apr	148.4	127.6	147.8
	May	151.8	128.5	151.1
	June	148.4	127.6	147.8
	Jul	163.7	130.4	162.7
	Aug	164.1	132.5	163.1
	Sep	164.5	141.8	163.8
	Oct	167.9	141.4	167.1
	Nov	166.4	148.0	165.9
	Dec	165.4	147.0	164.9
2018	Jan	168.0	153.5	167.6
	Feb	151.8	143.9	151.6
	Mar	159.4	133.2	158.7
	Apr	152.3	141.9	152.0
	May	145.4	130.0	144.9



Monthly Electricity Report

Table 3: Electricity sources subsector in MWh

Year	Month	Own generated	Import
2010	Jan	1 40 644	170 135
	Feb	142 680	150 060
	Mar	1 78 638	151 972
	Apr	173 468	139 471
	May	178 156	139 442
	Jun	148 632	174 819
	Jul	9 7 670	225 031
	Aug	7 2 090	249 267
	Sep	40 591	274 406
	Oct	2 7 817	299 253
	Nov	20 446	300 328
	Dec	1 30 795	200 847
2011	Jan	1 79 164	151 325
	Feb	1 62 476	142 391
	Mar	178 048	164 230
	Apr	172 703	142 254
	May	1 76 917	150 988
	Jun	1 69 554	164 192
	Jul	124 571	223 981
	Aug	118 103	224 347
	Sep	7 7 751	254 100
	Oct	4 2 346	307 624
	Nov	5 3 511	282 511
	Dec	151 806	180 962
2012	Jan	157 208	1 64 502
	Feb	166 661	159 444
	Mar	2 29 125	1 40 437
	Apr	235 433	120 761
	May	155 836	1 89 724
	Jun	98 948	2 53 287
	Jul	7 4 187	2 86 481
	Aug	7 1 051	2 86 376
	Sep	6 7 074	279 955
	Oct	65 758	2 94 002
	Nov	55 820	278 314
	Dec	142 163	1 98 319
2013	Jan	1 67 462	195 583
	Feb	125 756	2 04 038
	Mar	167 472	206 633
	Apr	211 960	144 284
	May	1 04 421	2 46 184
	Jun	7 6 007	274 746
	July	72 474	2 84 626
	Aug	6 4 967	293 024
	Sept	6 3 001	288 570
	Oct	5 3 014	3 14 523
	Nov	55 559	293 075
	Dec	1 76 914	1 70 331

Year	Month	Own generated	Import
2014	Jan	145 842	198 645
	Feb	115 363	1 98 001
	Mar	184 214	141 568
	Apr	2 37 021	1 05 445
	May	2 10 882	1 96 032
	Jun	118 989	242 204
	Jul	9 9 737	263 470
	Aug	92 585	266 068
	Sep	7 6 471	2 75 901
	Oct	6 7 229	301 895
	Nov	57 226	296 399
	Dec	2 09 267	2 16 303
2015	Jan	1 66 465	1 84 477
	Feb	149 796	1 78 355
	Mar	1 75 681	1 99 340
	Apr	212 911	1 69 782
	May	1 25 127	2 40 258
	Jun	8 7 582	2 69 882
	Jul	72 589	295 327
	Aug	71 478	2 97 025
	Sep	6 4 753	122 673
	Oct	52 155	302 342
	Nov	64 708	295 293
	Dec	82 584	304 172
2016	Jan	1 89 959	2 35 943
	Feb	1 79 873	194 909
	Mar	190 795	348 351
	Apr	1 82 267	197 959
	May	16 273	1 99 437
	Jun	1 08 304	256 083
	Jul	9 7 040	2 75 631
	Aug	9 7 386	2 78 153
	Sep	66 601	312 590
	Oct	66 875	3 16 925
	Nov	83 487	311 182
	Dec	171 237	226 916
2017	Jan	2 32 502	1 69 601
	Feb	185 610	167 716
	Mar	2 59 472	160 430
	Apr	2 23 170	1 78 971
	May	1 34 392	2 36 814
	Jun	8 3 410	2 69 000
	Jul	72 916	3 27 542
	Aug	34 542	371 617
	Sep	19 885	387 666
	Oct	29 702	389 450
	Nov	20 651	3 94 322
	Dec	4 0 532	372 611
2018	Jan	79 862	334 179
	Feb	1 97 034	2 07 219
	Mar	2 14 593	200 423
	Apr	260 294	127 802
	May	222 541	145 444



Monthly Electricity Report

Issue 049
08 August 2018

Table 4: Total subsector electricity index (2010=100)

Year	Month	Own generated Index	Import Index	Total Electricity in Namibia Index
2010	Jan	124.9	82.5	97.5
	Feb	126.7	72.8	91.8
	Mar	-	73.7	47.7
	Apr	154.0	67.6	98.1
	May	158.2	67.6	99.6
	Jun	132.0	84.8	101.4
	Jul	86.7	109.1	101.2
	Aug	64.0	120.9	100.8
	Sep	36.0	133.0	98.8
	Oct	24.7	145.1	102.6
	Nov	18.2	145.6	100.6
	Dec	116.1	97.4	104.0
2011	Jan	159.1	73.4	103.6
	Feb	144.2	69.0	95.6
	Mar	158.1	79.6	107.3
	Apr	153.3	69.0	98.8
	May	157.1	73.2	102.8
	Jun	150.5	79.6	104.7
	Jul	110.6	108.6	109.3
	Aug	104.9	108.8	107.4
	Sep	69.0	123.2	104.1
	Oct	37.6	149.1	109.7
	Nov	47.5	137.0	105.4
	Dec	134.8	87.7	104.4
2012	Jan	139.6	79.8	100.9
	Feb	148.0	77.3	102.3
	Mar	203.4	68.1	115.9
	Apr	209.0	58.5	111.7
	May	138.4	92.0	108.4
	Jun	87.8	122.8	110.5
	Jul	65.9	138.9	113.1
	Aug	63.1	138.8	112.1
	Sep	59.5	135.7	108.8
	Oct	58.4	142.5	112.8
	Nov	49.6	134.9	104.8
	Dec	126.2	96.2	106.8
2013	Jan	148.7	94.8	113.8
	Feb	111.6	98.9	103.4
	Mar	148.7	100.2	117.3
	Apr	188.2	70.0	111.7
	May	92.7	119.4	109.9
	Jun	67.5	133.2	110.0
	Jul	64.3	138.0	112.0
	Aug	57.7	142.1	112.3
	Sept	55.9	139.9	110.2
	Oct	47.1	152.5	115.3
	Nov	49.3	142.1	109.3
	Dec	157.1	82.6	108.9

Year	Month	Own generated Index	Import Index	Total Electricity in Namibia Index
2014	Jan	129.5	96.3	108.0
	Feb	102.4	96.0	98.3
	Mar	163.5	68.6	102.2
	Apr	210.4	51.1	107.4
	May	187.2	95.0	127.6
	Jun	105.6	117.4	113.3
	Jul	88.5	127.7	113.9
	Aug	82.2	129.0	112.5
	Sep	67.9	133.8	110.5
	Oct	59.7	146.4	115.8
	Nov	50.8	143.7	110.9
	Dec	185.8	104.9	133.5
2015	Jan	147.8	89.4	110.1
	Feb	133.0	86.5	102.9
	Mar	156.0	96.6	117.6
	Apr	189.0	82.3	120.0
	May	111.1	116.5	114.6
	June	77.8	130.9	112.1
	Jul	64.4	143.2	115.4
	Aug	63.5	144.0	115.6
	Sep	57.5	59.5	58.8
	Oct	46.3	146.6	111.2
	Nov	57.4	143.2	112.9
	Dec	73.3	147.5	121.3
2016	Jan	168.6	114.4	133.6
	Feb	159.7	94.5	117.5
	Mar	169.4	168.9	169.1
	Apr	161.8	96.0	119.2
	May	14.4	96.7	67.6
	Jun	96.2	124.2	114.3
	Jul	86.2	133.6	116.9
	Aug	86.5	134.9	117.8
	Sep	59.1	151.6	118.9
	Oct	59.4	153.7	120.4
	Nov	74.1	150.9	123.8
	Dec	152.0	110.0	124.9
2017	Jan	206.4	82.2	126.1
	Feb	164.8	81.3	110.8
	Mar	230.4	77.8	131.7
	Apr	198.1	86.8	126.1
	May	119.3	114.8	116.4
	June	74.1	130.4	110.5
	Jul	64.7	158.8	125.6
	Aug	30.7	180.2	127.4
	Sep	17.7	188.0	127.8
	Oct	26.4	188.8	131.4
	Nov	18.3	191.2	130.1
	Dec	36.0	180.7	129.6
2018	Jan	70.9	162.0	129.8
	Feb	174.9	100.5	126.8
	Mar	190.5	97.2	130.1
	Apr	231.1	62.0	121.7
	May	197.6	70.5	115.4



Methodology

Background: Domestic electricity Sales, exports data and Sources are weighted to calculate the overall index.

Data sources: NamPower

Base year: 2010