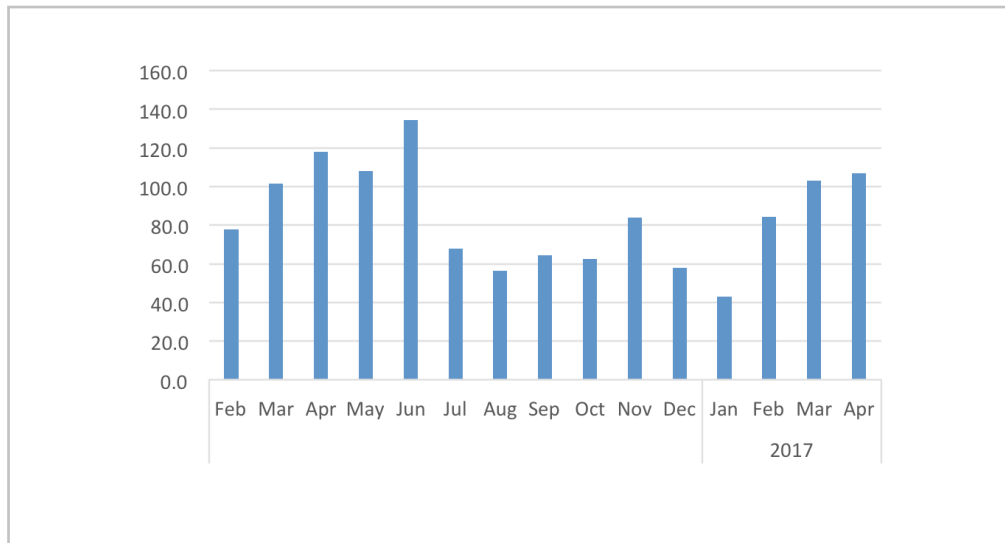
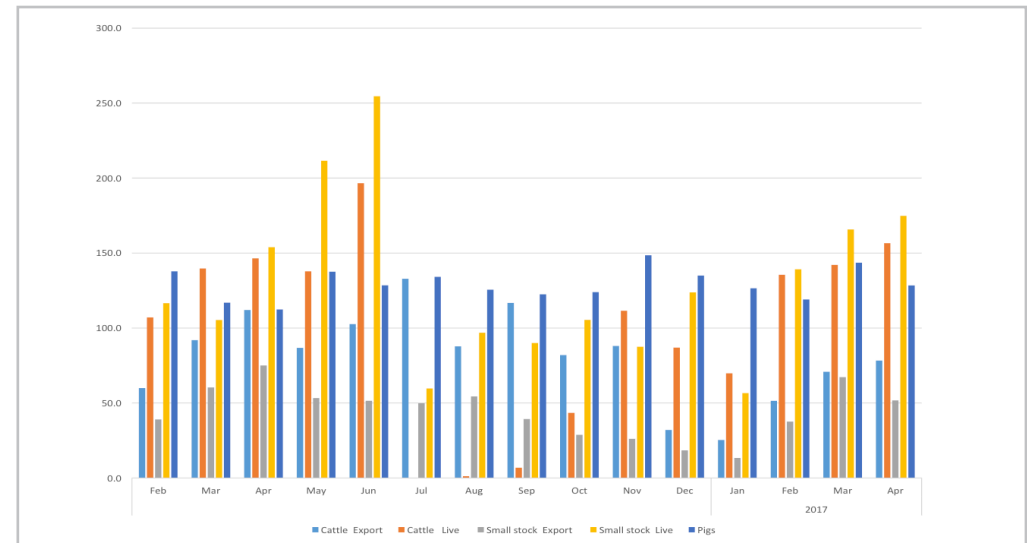


Chart 1: Livestock Marketed Index 2010 = 100



- The livestock marketed composite index recorded 106.7 basis points in April 2017 compared to 102.9 basis points registered in March 2017. This translates into an increase of 3.7 percent m/m and a decline of 9.6 percent y/y.
- In absolute terms, the number of livestock marketed recorded in April 2017 was 131,045 compared to 137,153 recorded in the preceding month.
- (Chart 2): The cattle abattoirs and butchers' index registered 78.3 basis points in April 2017. This translates into an increase of 10.5 percent m/m and a decline of 30.1 percent y/y.

Chart 2: Livestock Marketed Sub-Sector Index



- The index for cattle live exported on hoof stood at 156.6 basis points in April 2017 compared to 142.1 recorded in March 2017. This translates into increases of 10.2 percent m/m and 6.9 percent y/y respectively.
- The small stock abattoirs and butchers index for April 2017 registered 51.8 basis points compared to 67.3 basis points of the preceding month. This represents declines of 23.0 percent m/m and 31.0 percent y/y respectively.
- The index for small stock south Africa & Angola stood at 174.8 basis points in April 2017 compared to 165.7 recorded in the preceding month. This represents increases of 5.5 percent m/m and 13.6 percent y/y respectively.
- The index for Pigs in April 2017 stood at 128.4 basis points compared to 143.6 basis points of the previous month. This represents a decline of 10.6 percent m/m and an increase of 14.3 percent y/y.



Table 1: Number of livestock marketed ('000)

		Cattle		Small stock		Pigs	Total
		Export	Live	Export	Live		
2010	Jan	9	11	47	11	3	80
	Feb	8	11	78	23	3	124
	Mar	13	16	105	44	4	182
	Apr	19	12	114	35	4	185
	May	17	6	65	12	3	103
	Jun	18	17	105	41	3	183
	Jul	18	22	80	47	3	170
	Aug	12	24	69	37	3	145
	Sep	8	22	55	37	3	125
	Oct	10	19	52	31	4	115
	Nov	10	21	58	20	2	111
	Dec	6	13	75	30	1	124
2011	Jan	9	14	43	16	3	84
	Feb	8	18	75	15	4	120
	Mar	13	19	110	26	4	172
	Apr	19	14	78	27	4	143
	May	17	17	89	40	3	166
	Jun	18	16	76	31	3	143
	Jul	18	21	71	38	3	150
	Aug	12	21	43	26	3	104
	Sep	8	15	35	24	3	85
	Oct	10	20	36	27	4	96
	Nov	10	15	49	18	2	94
	Dec	6	10	73	32	1	122
2012	Jan	7	10	49	14	3	83
	Feb	8	7	77	20	3	115
	Mar	14	9	97	33	3	155
	Apr	16	7	90	27	6	146
	May	15	6	88	31	3	143
	Jun	17	9	83	37	3	149
	Jul	20	11	80	35	3	149
	Aug	12	18	62	31	1	124
	Sep	8	14	63	32	4	121
	Oct	11	17	38	30	5	103
	Nov	9	18	62	20	1	110
	Dec	6	8	55	29	1	99
2013	Jan	10	11	61	14	4	100
	Feb	10	19	95	19	3	146
	Mar	10	28	124	38	3	202
	Apr	16	25	94	53	3	191
	May	22	25	93	46	4	190
	Jun	19	26	78	65	3	191
	Jul	12	33	73	38	2	159
	Aug	12	31	73	46	3	165
	Sep	12	24	61	38	4	138
	Oct	11	20	62	30	4	126
	Nov	13	18	64	29	4	128
	Dec	6	10	51	40	4	111

		Cattle		Small stock		Pigs	Total
		Export	Live	Export	Live		
2014	Jan	5	7	47	20	4	84
	Feb	7	7	58	40	4	116
	Mar	10	10	78	50	3	151
	Apr	11	10	74	70	3	168
	May	18	0	80	5	3	107
	Jun	18	0	70	13	4	106
	Jul	17	1	59	16	4	97
	Aug	16	3	55	20	3	96
	Sep	11	15	35	31	3	95
	Oct	13	21	32	30	4	100
	Nov	10	16	27	11	3	66
	Dec	5	13	40	36	2	97
2015	Jan	12	18	35	20	4	89
	Feb	9	25	46	34	3	116
	Mar	12	26	78	53	3	171
	Apr	13	18	48	43	3	125
	May	15	14	63	79	2	173
	Jun	17	22	57	69	4	168
	Jul	17	25	50	73	4	169
	Aug	9	34	31	65	4	143
	Sep	11	26	27	46	3	113
	Oct	11	28	73	36	3	152
	Nov	11	11	39	13	1	75
	Dec	5	10	73	46	3	138
2016	Jan	9	8	16	21	4	59
	Feb	7	17	29	36	4	94
	Mar	11	23	45	32	3	115
	Apr	14	24	57	47	3	144
	May	10	22	40	65	4	142
	Jun	12	32	39	78	4	165
	Jul	16	0	38	18	4	76
	Aug	11	0	41	30	4	85
	Sep	14	1	30	27	4	76
	Oct	10	7	22	32	4	75
	Nov	11	18	20	27	4	80
	Dec	4	14	14	38	4	74
2017	Jan	3	11	10	17	4	46
	Feb	6	22	28	43	4	103
	Mar	9	23	51	51	4	137
	Apr	9	25	39	53	4	131



Table 2: Composite Index of Livestock marketed

		Cattle		Small stock		Pigs	Weighted index
		Export	Live	Export	Live		
2010	Jan	71.1	65.2	62.4	34.7	108.4	65.6
	Feb	65.4	69.7	104.2	75.1	116.5	78.0
	Mar	104.4	99.5	139.6	143.9	136.2	115.3
	Apr	158.1	75.0	151.7	115.6	123.8	126.4
	May	139.4	36.0	86.8	39.8	87.9	85.8
	Jun	145.3	104.9	139.2	134.5	90.9	128.6
	Jul	145.1	138.8	105.9	153.5	95.8	133.5
	Aug	97.5	150.1	91.6	119.7	110.1	114.6
	Sep	62.3	136.8	73.3	120.4	100.6	93.9
	Oct	80.9	115.9	68.7	100.6	118.6	92.1
	Nov	83.6	129.1	77.4	64.8	62.6	93.6
	Dec	47.1	79.1	99.2	97.5	48.6	72.7
2011	Jan	71.1	86.3	57.0	51.2	109.5	72.3
	Feb	65.4	113.5	99.1	49.6	117.7	88.0
	Mar	104.4	117.2	145.8	86.2	137.6	117.0
	Apr	158.1	88.4	103.8	89.0	125.0	117.7
	May	139.4	106.2	117.9	131.1	88.8	122.0
	Jun	145.3	98.9	100.5	101.8	91.8	115.6
	Jul	145.1	127.0	94.3	124.4	96.7	124.8
	Aug	97.5	127.1	56.6	83.6	111.2	96.9
	Sep	62.3	94.9	46.9	77.6	101.6	71.7
	Oct	80.9	124.2	47.2	88.2	119.8	88.8
	Nov	83.6	94.9	65.2	58.3	63.2	80.0
	Dec	47.1	64.6	97.1	103.8	49.1	68.4
2012	Jan	55.2	61.9	65.3	46.5	103.5	60.5
	Feb	62.0	45.4	101.8	65.3	100.8	67.5
	Mar	113.4	55.1	128.2	106.6	105.2	98.0
	Apr	136.1	42.8	119.3	88.2	187.9	101.9
	May	121.0	39.3	116.9	100.4	100.2	92.7
	Jun	141.6	54.6	110.8	121.5	84.8	104.5
	Jul	165.3	69.4	106.4	114.5	100.5	116.4
	Aug	99.5	109.4	82.8	100.4	34.7	96.4
	Sep	67.7	85.2	83.9	105.5	128.0	82.2
	Oct	91.9	107.5	50.9	99.4	182.6	91.9
	Nov	76.1	109.2	82.2	66.1	39.7	85.2
	Dec	48.2	48.7	72.9	95.6	36.5	57.5
2013	Jan	80.9	70.0	80.3	46.2	127.4	76.2
	Feb	79.4	119.1	125.9	62.6	92.2	100.6
	Mar	83.2	171.3	164.0	124.5	92.2	131.5
	Apr	135.8	153.9	124.9	172.0	103.1	140.9
	May	184.0	154.9	123.3	150.7	119.8	156.5
	Jun	157.0	161.1	103.1	214.3	94.6	149.2
	Jul	103.1	203.1	96.9	125.8	61.2	132.5
	Aug	98.9	193.0	97.0	149.1	102.2	131.6
	Sep	99.2	145.7	81.2	123.0	123.3	112.4
	Oct	87.2	124.6	82.0	97.8	137.7	100.3
	Nov	110.2	112.3	84.9	93.8	134.3	104.8
	Dec	48.8	64.0	67.8	130.1	124.6	67.7

		Cattle		Small stock		Pigs	Weighted index
		Export	Live	Export	Live		
2014	Jan	43.7	44.1	62.8	65.5	135.7	53.5
	Feb	60.7	44.3	77.6	129.7	119.7	67.8
	Mar	83.5	60.8	103.4	162.6	104.9	88.8
	Apr	93.4	59.1	97.7	230.2	100.1	96.3
	May	149.0	2.2	105.8	17.7	114.6	82.1
	Jun	151.4	1.5	93.2	41.9	140.0	83.1
	Jul	137.7	5.0	78.9	51.7	129.2	76.7
	Aug	128.9	15.8	72.5	65.9	116.5	76.2
	Sep	88.9	91.6	46.4	100.1	113.6	82.4
	Oct	109.3	130.9	43.1	97.0	125.0	100.9
	Nov	78.9	99.6	35.8	35.0	91.0	72.3
	Dec	37.9	82.3	53.5	119.0	82.6	63.7
2015	Jan	98.4	109.2	45.8	66.8	143.3	89.2
	Feb	70.7	152.7	61.4	110.0	112.2	98.6
	Mar	100.6	162.6	103.2	172.0	91.4	126.0
	Apr	107.8	112.6	63.7	140.8	95.2	102.1
	May	126.3	83.8	83.0	259.9	83.5	114.1
	Jun	137.5	134.6	75.4	226.5	132.6	130.8
	Jul	137.0	154.1	65.9	239.7	142.7	136.0
	Aug	76.7	208.0	41.2	213.7	122.9	122.7
	Sep	89.9	159.7	36.1	151.0	93.5	104.9
	Oct	94.3	173.2	97.3	118.4	97.2	121.1
	Nov	88.6	70.4	51.8	41.4	34.6	68.8
	Dec	42.1	61.1	96.9	151.7	113.4	72.3
2016	Jan	76.0	51.2	21.8	68.9	137.2	58.4
	Feb	60.0	107.1	39.0	116.5	137.8	77.7
	Mar	91.9	139.7	60.4	105.4	117.0	101.7
	Apr	112.0	146.5	75.0	153.9	112.4	118.1
	May	86.8	137.9	53.3	211.6	137.6	108.0
	Jun	102.6	196.6	51.5	254.6	128.5	134.4
	Jul	132.8	0.0	49.8	59.7	134.1	68.0
	Aug	87.8	1.2	54.4	96.9	125.5	56.5
	Sep	116.8	6.9	39.3	90.0	122.5	64.4
	Oct	82.0	43.4	28.8	105.5	123.9	62.4
	Nov	88.1	111.5	26.1	87.5	148.6	84.0
	Dec	32.0	86.9	18.4	123.8	135.0	57.8
2017	Jan	25.3	69.8	13.4	56.6	126.5	42.9
	Feb	51.5	135.5	37.6	139.2	119.1	84.3
	Mar	70.8	142.1	67.3	165.7	143.6	102.9
	Apr	78.3	156.6	51.8	174.8	128.4	106.7



Methodology

Data Sources: The data are obtained from the Meat Board of Namibia and the Agricultural Union of Namibia.

Base year: Livestock sectoral report is harmonised with the quarterly and annual national accounts base year 2010.

Calculations of index: The index is calculated based on the 2010 base year volumes and 2010 weights. The index is a magnitude of the volume changes over time, with reference to the volume of the base year 2010.

Index is calculated as a ratio of a volume of a specific component in a specific month to the total volume of that component in 2010.