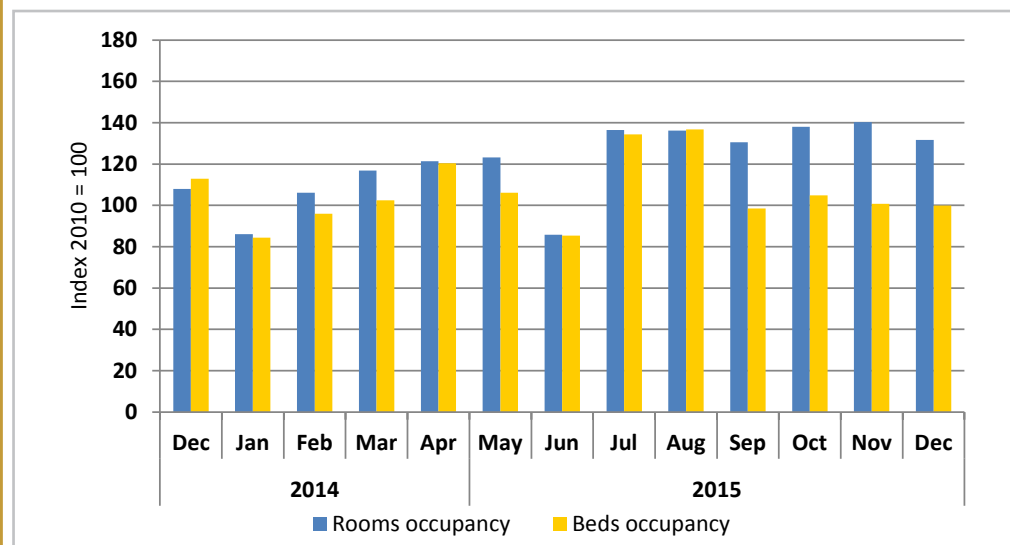




Chart 1: Beds & Rooms Occupancy Indices



- The Rooms' Occupancy Index recorded 131.7 basis points in December 2015. This represents a decline of 6.1 percent m/m and an increase of 22.0 percent y/y.
- The Beds' Occupancy Index recorded 120.6 basis points during the review month compared to 121.6 basis points recorded during November 2015. This shows a decline of 0.8 percent m/m and an increase of 6.8 per cent y/y.
- The Namibia Airports Company data was not available for compilation.

These serves as a proxy to tourism sector, a priority sector under NDP4 and its contribution to GDP in 2014 has remained constant at 1.6 compared to 2013.





Table 1: The indices of regional and International arrivals and departures, and beds and rooms occupancy rates

		Arrivals (reg.&intern.)	Departures(reg.&intern.)	Room occupancy	Bed occupancy			Arrivals (reg.&intern.)	Departures(reg.&intern.)	Room occupancy	Bed occupancy
2010	Jan	85.1	90.3	63.3	70.9	2013	Jan	9 6.9	9 9.5	5 8.6	5 7.0
	Feb	83.6	81.9	67.7	68.4		Feb	8 6.2	8 0.9	8 5.3	7 4.9
	Mar	107.6	96.5	90.5	90.1		Mar	1 08.3	1 05.5	9 2.8	8 5.9
	Apr	92.7	105.1	106.6	110.6		Apr	1 04.4	1 11.9	9 8.8	9 0.5
	May	104.6	98.6	104.4	99.6		May	1 13.7	1 14.9	1 02.9	9 5.6
	Jun	76.6	82.7	86.9	85.5		Jun	9 8.3	9 7.2	9 6.0	8 6.8
	Jul	102.1	86.0	94.2	94.9		Jul	1 17.4	1 06.6	1 07.8	1 04.5
	Aug	125.9	127.2	136.9	134.7		Aug	1 16.6	1 26.9	1 23.0	1 38.8
	Sep	116.6	115.3	134.2	132.4		Sep	1 24.7	1 23.1	1 33.2	1 18.8
	Oct	116.8	118.5	127.8	129.6		Oct	1 23.5	1 23.8	1 34.6	1 31.3
	Nov	97.3	103.9	116.0	107.5		Nov	1 23.1	1 33.0	1 27.5	1 15.2
	Dec	91.1	93.9	71.5	75.9		Dec	9 8.5	1 06.6	8 8.1	8 8.8
2011	Jan	87.9	89.3	53.5	55.9	2014	Jan	9 6.4	9 3.1	7 9.2	7 7.6
	Feb	87.4	84.5	68.4	61.5		Feb	9 6.2	9 3.4	9 8.2	8 4.7
	Mar	101.9	98.6	68.7	68.8		Mar	1 12.7	1 07.6	1 11.7	1 00.6
	Apr	110.9	114.0	78.8	100.5		Apr	1 21.8	1 30.6	1 39.0	1 15.2
	May	100.2	105.4	77.1	85.0		May	1 13.7	1 20.1	1 21.2	1 09.7
	Jun	92.3	92.3	76.5	77.7		Jun	9 8.7	9 7.9	1 23.2	1 05.4
	Jul	123.1	109.4	87.8	98.8		Jul	1 14.8	1 14.1	1 35.8	1 28.2
	Aug	122.2	133.7	80.0	116.4		Aug	1 23.8	1 24.8	1 50.9	1 53.5
	Sep	117.8	119.9	98.3	101.0		Sep	1 20.8	1 20.9	1 47.9	1 44.4
	Oct	134.5	129.8	110.1	122.5		Oct	1 32.0	1 32.8	1 65.6	1 48.9
	Nov	113.2	127.7	98.2	108.3		Nov	1 15.6	1 31.9	1 45.5	1 31.7
	Dec	110.1	114.6	72.7	79.3		Dec	1 00.9	1 11.8	1 08.0	1 12.9
2012	Jan	95.5	108.2	59.4	60.4	2015	Jan	9 7.7	1 01.7	8 6.1	8 4.4
	Feb	95.4	94.0	81.0	71.0		Feb	9 3.0	9 3.4	1 06.1	9 6.0
	Mar	113.2	109.2	85.5	77.0		Mar	1 14.0	1 03.9	1 16.8	1 02.5
	Apr	119.9	127.6	99.0	97.0		Apr	1 06.9	1 17.3	1 21.4	1 20.4
	May	114.6	113.7	94.9	89.3		May	1 00.9	1 00.9	1 23.1	1 06.1
	Jun	108.0	107.3	89.7	82.4		Jun	1 02.3	9 1.3	8 5.8	8 5.3
	Jul	135.5	126.6	105.5	101.9		Jul	1 37.7	1 20.1	1 36.5	1 34.4
	Aug	145.9	152.7	131.8	127.2		Aug	-	-	1 36.2	1 36.8
	Sep	134.2	131.5	126.9	117.3		Sep	-	-	1 30.5	1 18.8
	Oct	133.0	135.4	126.7	116.2		Oct	-	-	1 38.1	1 26.6
	Nov	111.8	121.7	121.7	112.8		Nov	-	-	1 40.3	1 21.6
	Dec	107.5	83.0	91.1	99.3		Dec	-	-	1 31.7	1 20.6

These serves as a proxy to tourism sector, a priority sector under NDP4 and its contribution to GDP in 2014 has remained constant at 1.6 compared to 2013.



Methodology

Background: The room and bed occupancy indices and the arrivals and departures indices serves as a proxy to tourism sector, a priority sector under NDP4.

Data sources: Namibia Airport Company and Hospitality Association of Namibia.

Base year: 2010

These serves as a proxy to tourism sector, a priority sector under NDP4 and its contribution to GDP in 2014 has remained constant at 1.6 compared to 2013.