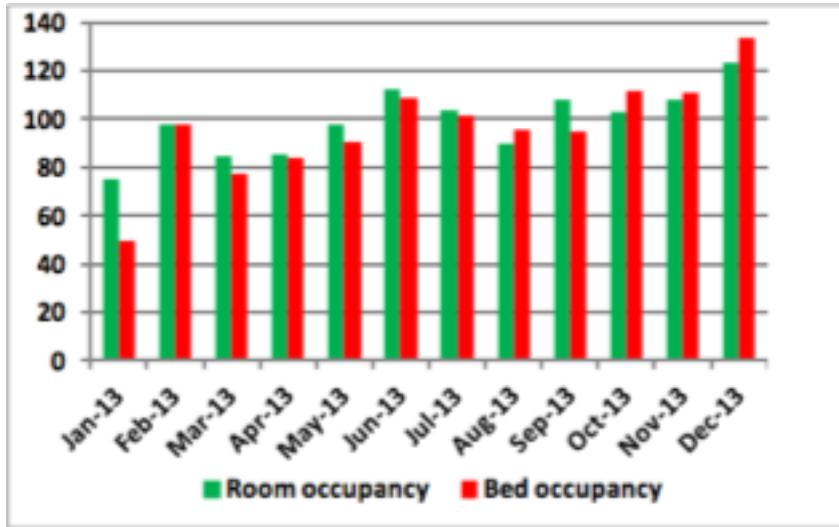


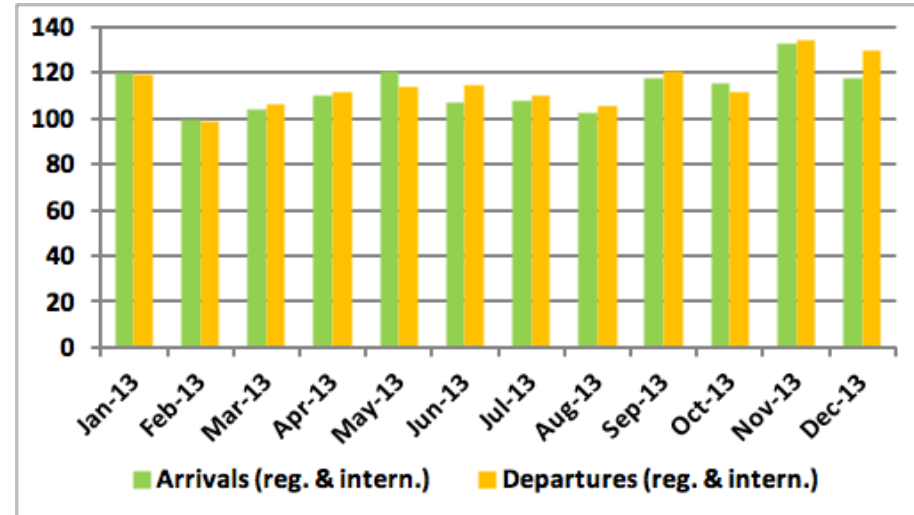


Bed and room occupancy indices (2008 = 100)



Bed and room occupancy rates have steadily improved during 2013 compared to the same month in 2008 and exceeded the rates from September onwards for almost all months. Despite this positive trend, the indices remained slightly below 100 when applied to the whole year. The bed and room occupancy rates stood at 51 and 42 for the whole year of 2008 compared to 48 and 38 in 2013. Both the room and bed occupancy rates peaked in October 2013 at 64 and 56 per cent respectively. The low point for the hospitality industry was January with bed and room occupancy rates of 27 and 22 per cent respectively. Compared to 2008 however, December was the best month with indices exceeding 120.

Regional and international arrival and departure indices (2008 = 100)



Except for February 2013 regional and international arrivals and departures by air exceeded the numbers during the same month in 2008. November showed the best performance followed by December and January compared to the same months in 2008. In terms of absolute numbers, October and November came on top with 37,637 and 37,259 arrivals respectively, which correlates with high room occupancy rates. Interestingly, most travellers left during November (39,240). Overall, 395,737 passengers arrived in Namibia in 2013 and 392,342 departed, thereby exceeding the numbers for 2008 by 12 and 14 per cent respectively.