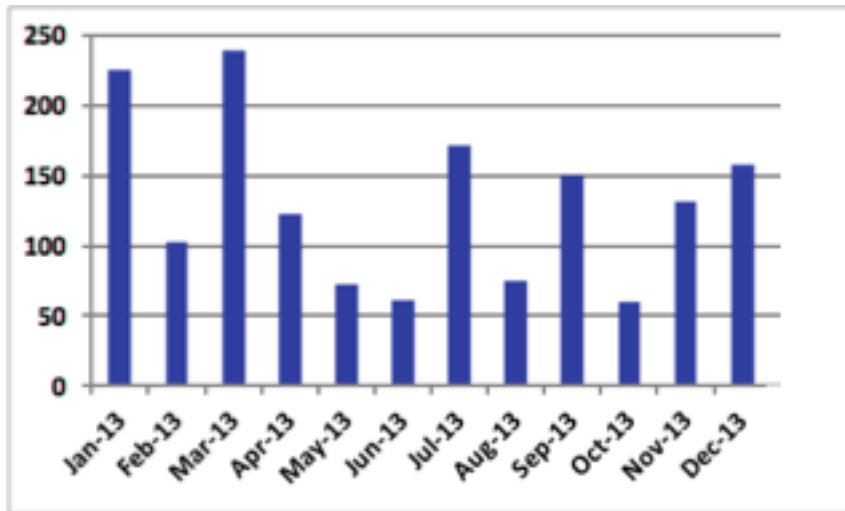


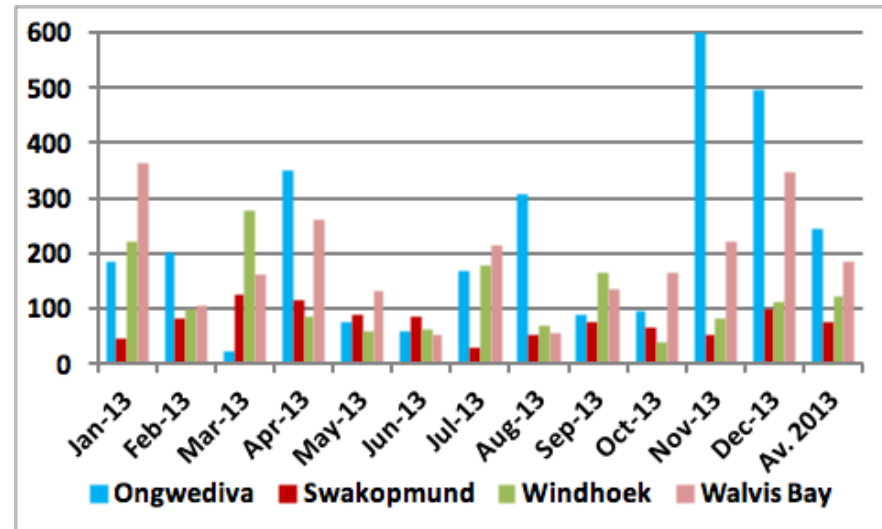
## Overall building plans index (2012 = 100)



The amount of building plans approved and completed is often used as an indicator for the performance of the construction sector, although construction activities include large projects for infrastructure development. While the year started well concerning building plans approved and completed averaging 189 in the first quarter, it showed strong fluctuations throughout the remaining year. It closed the year at 139, indicating an overall better performance than in 2012. Although NSA monitors 24 local authorities on a monthly basis, four have been selected for the index that accounted for 95 per cent of all the value of all plans in 2011.

Ongwediva was the best performing local authority with an average index of 246 implying that the value of building plans passed and completed was 2.5 times the value in 2012.

## Overall building plans index (2012 = 100)



Note: The index for Ongwediva stood at 901 in November. In order to improve readability, we have cut the graph at 600.

Walvis Bay followed on second place with an average of 184 and Windhoek with 121. It appears that the construction boom in Swakopmund took a dip in 2013. The value of plans exceeded the value in the year before only slightly in two months – March and April and ended the year below the value of 2012 with an average of 77. More than 5,000 building plans were passed and completed in Windhoek during 2013 valuing NAD2.9 million. Walvis Bay approved and completed some 1,300 plans valued at NAD794,000. The authorities in Swakopmund had to deal with about 800 plans (NAD374,000) and in Ongwediva with more than 500 to the value of NAD207,000. The total value amounted to NAD4.3 million for the four local authorities.